

FILED  
 Date: 6-2-10 By: JC  
 This survey consists of:  
 Map: MP 4.35-5.24  
 Narratives:  
 Corner Rpt: 5 sheets  
 DOUGLAS COUNTY SURVEYOR

RESIDUALS FOR DISTANCES

BETWEEN	DISTANCE**	DISTANCE RESIDUAL
10 15	735.97'	0.004'
15 16	750.36'	0.008'
16 5	1225.18'	0.011'

\*\* CALCULATED HORIZONTAL DISTANCES IN FEET DERIVED FROM THE MEASURED SLOPE DISTANCES

RESIDUALS FOR ANGLES

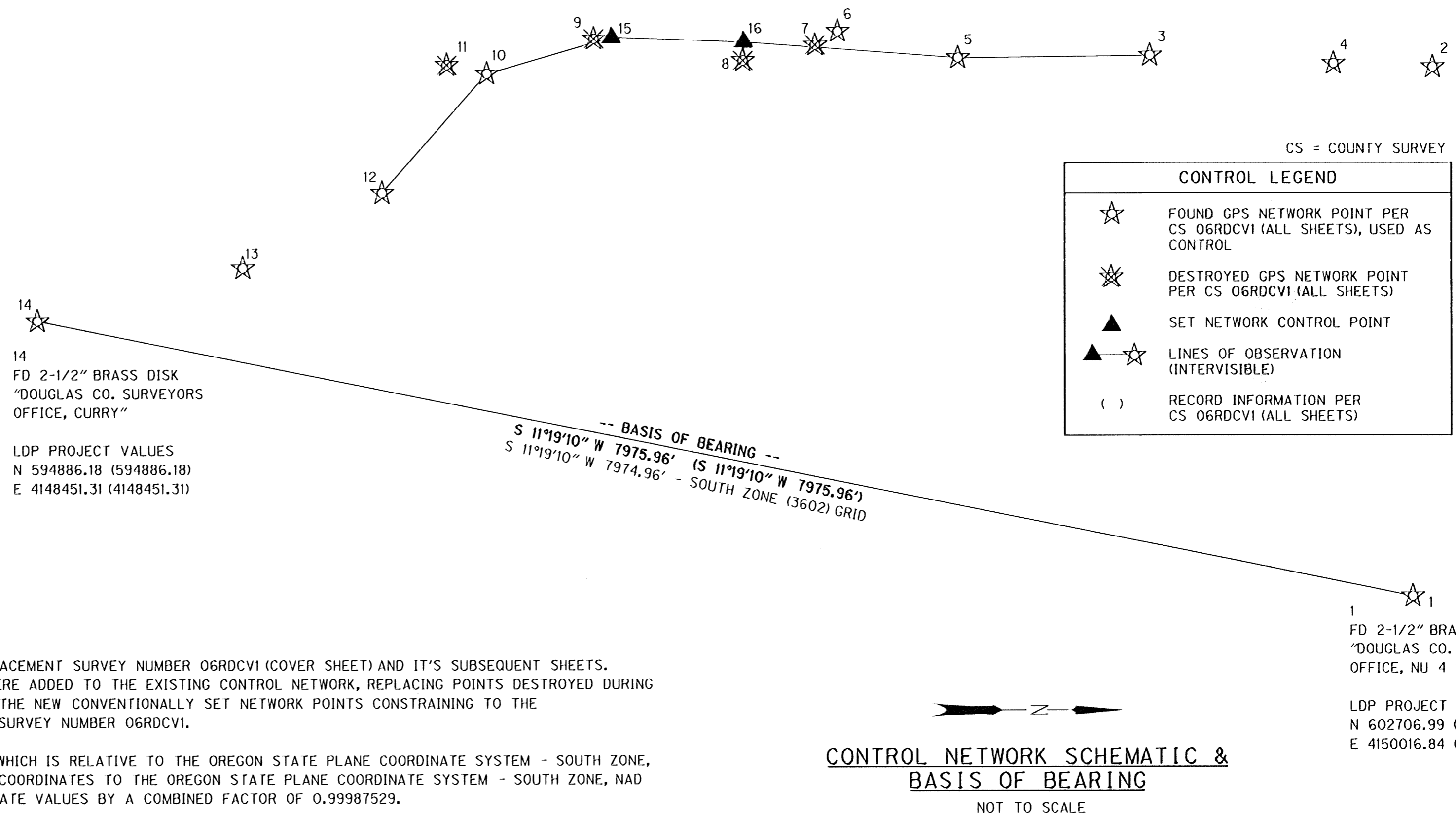
BACKSIGHT STATION	OCCUPIED STATION	FORESIGHT STATION	RESIDUAL
12 10	15	00°00'02"	
10 15	16	-00°00'02"	
15 16	5	-00°00'02"	
16 5	3	-00°00'02"	

1.96 SIGMA (95%) CONFIDENCE LEVEL LIMITS

POINT NO	SEMI MAJOR	SEMI MINOR	ORIENTATION*
15	0.02 INT FT	0.02 INT FT	82°42'28.9"
16	0.02 INT FT	0.02 INT FT	89°19'30.4"

\* NORTH AZIMUTH  
 FIXED POINTS NOT SUBJECT TO LEAST SQUARES ADJUSTMENT OR CONFIDENCE LEVEL ANALYSIS:  
 POINTS 3, 5, 10, 12

SW 1/4 SEC 34 T26S R6W WM  
 NW 1/4 SEC 34 T26S R6W WM  
 NE 1/4 SEC 33 T26S R6W WM  
 SE 1/4 SEC 28 T26S R6W WM  
 NW 1/4 SEC 27 T26S R6W WM  
 NE 1/4 SEC 28 T26S R6W WM



CS = COUNTY SURVEY

CONTROL LEGEND	
☆	FOUND GPS NETWORK POINT PER CS 06RDCVI (ALL SHEETS), USED AS CONTROL
☆	DESTROYED GPS NETWORK POINT PER CS 06RDCVI (ALL SHEETS)
▲	SET NETWORK CONTROL POINT
▲-☆	LINE OF OBSERVATION (INTERVISIBLE)
( )	RECORD INFORMATION PER CS 06RDCVI (ALL SHEETS)

CONTROL NARRATIVE

PROJECT: NORTH UMPQUA RIVER BROWN'S BRIDGE  
 LOCATION: DOUGLAS COUNTY  
 ODOT KEY NUMBER: 15467  
 P.A. NUMBER: 25313  
 OBEC PROJECT: 0019-0084.68  
 SURVEY DATUM:  
 HORIZONTAL - LOCAL DATUM PLANE (LDP) DERIVED FROM OREGON STATE PLANE, SOUTH ZONE - NAD 83(CORS96) EPOCH 2002 (INTERNATIONAL FEET) PER CS 06RDCVI (COVER SHEET) AND IT'S SUBSEQUENT PAGES

LDP PROJECT VALUES  
 N 594886.18 (594886.18)  
 E 4148451.31 (4148451.31)

BEARING BASE: GRID NORTH PER COUNTY SURVEY NUMBER 06RDCVI

THE INITIAL CONTROL NETWORK MONUMENTATION WAS ESTABLISHED IN RETRACEMENT SURVEY NUMBER 06RDCVI (COVER SHEET) AND IT'S SUBSEQUENT SHEETS. THIS CONTROL NETWORK WAS USED AS SHOWN HEREON. TWO NEW POINTS WERE ADDED TO THE EXISTING CONTROL NETWORK, REPLACING POINTS DESTROYED DURING THE CONSTRUCTION OF THE BRIDGE. A SECOND ADJUSTMENT WAS MADE TO THE NEW CONVENTIONALLY SET NETWORK POINTS CONSTRAINING TO THE REMAINING CONTROL MONUMENTS ESTABLISHED IN 2008 AS FILED ON SAID SURVEY NUMBER 06RDCVI.

THIS SURVEY UTILIZED A LOCAL DATUM PLANE (LDP) COORDINATE SYSTEM, WHICH IS RELATIVE TO THE OREGON STATE PLANE COORDINATE SYSTEM - SOUTH ZONE, NAD 83(CORS96) EPOCH 2002 (INTERNATIONAL FEET). TO CONVERT THE LDP COORDINATES TO THE OREGON STATE PLANE COORDINATE SYSTEM - SOUTH ZONE, NAD 83(CORS96) EPOCH 2002 (INTERNATIONAL FEET), MULTIPLY THE LDP COORDINATE VALUES BY A COMBINED FACTOR OF 0.99987529.

CONTROL POINTS FOR THIS SURVEY WERE NOT SET ON NOR DO THEY REPRESENT PROPERTY LINES OR RIGHT-OF-WAY LINES AND ARE INTENDED FOR USE SOLELY BY DOUGLAS COUNTY, OREGON AND OBEC CONSULTING ENGINEERS IN SUPPORT OF FUTURE PROJECTS. IT IS NOT OUR INTENT TO PERPETUATE THESE CONTROL POINTS AS MONUMENTS.

NETWORK POINT COORDINATE TABLE

FD = FOUND  
 RPC = RED PLASTIC CAP

PT. ID.	LDP NORTHING	LDP EASTING	DESCRIPTION
1	602706.99	4150016.84	FD 2-1/2" BRASS CAP IN CONCRETE, UP 0.6', "DOUGLAS CO. SURVEYORS OFFICE, NU 4 1972"
2	602823.34	4147015.06	FD 3-1/2" BRASS CAP IN CONCRETE, FLUSH, "DOUGLAS CO. SURVEYORS OFFICE, NU 3, 1972"
3	601213.34	4146947.73	FD SPIKE WITH CENTER PUNCH, FLUSH IN ASPHALT
4	602257.89	4146994.48	FD SPIKE WITH CENTER PUNCH, FLUSH IN ASPHALT
5	600122.14	4146960.42	FD SPIKE WITH CENTER PUNCH, FLUSH IN ASPHALT
6	599437.82	4146807.93	FD MAGNAIL, FLUSH IN ASPHALT
7	599309.83	4146885.78	FD SPIKE WITH CENTER PUNCH, FLUSH IN ASPHALT - DESTROYED
8	598898.92	4146913.64	FD SPIKE WITH CENTER PUNCH, FLUSH IN ASPHALT - DESTROYED
9	598052.36	4146849.63	FD SPIKE WITH CENTER PUNCH, FLUSH IN ASPHALT - DESTROYED
10	597443.81	4147047.57	FD SPIKE WITH CENTER PUNCH, FLUSH IN ASPHALT - PAVED OVER, BUT NOT DESTROYED
11	597216.63	4146998.45	FD MAGNAIL, FLUSH IN ASPHALT - DESTROYED
12	596846.84	4147724.33	FD SPIKE WITH CENTER PUNCH, FLUSH IN ASPHALT
13	596053.44	4148148.17	FD SPIKE WITH CENTER PUNCH, FLUSH IN ASPHALT
14	594886.18	4148451.31	FD 2-1/2" BRASS CAP IN CONCRETE, EXP 0.3', "DOUGLAS CO. SURVEYORS OFFICE, CURRY"
15	598150.55	4146842.21	SET 5/8"x 30" REBAR W/ RPC "OBEC CONTROL"
16	598900.47	4146867.71	SET 5/8"x 30" REBAR W/ RPC "OBEC CONTROL"

REGISTERED PROFESSIONAL LAND SURVEYOR  
 OREGON JULY 12, 2005  
 LOGAN MILES 65452  
 RENEWAL: DEC. 31, 2012

OBEC CONSULTING ENGINEERS  
 Corporate Office: 920 COUNTRY CLUB ROAD, SUITE 100B EUGENE, OREGON 97401-6089, 541-683-6090  
 2235 MISSION STREET SE, SUITE 100 SALEM, OREGON 97302-1295, 503-589-4100  
 831 O' HARE PARKWAY WEDFORD, OREGON 97504-4005, 541-774-5590  
 5005 SW MEADOWS ROAD, SUITE 120 LAKE OSWEGO, OREGON 97035, 503-620-6103

OREGON DEPARTMENT OF TRANSPORTATION  
 RIGHT OF WAY BOUNDARY RE-MONUMENTATION SURVEY  
 NORTH UMPQUA RIVER BROWNS BRIDGE  
 GARDEN VALLEY RD.  
 DOUGLAS COUNTY  
 ODOT REGION 3 MAY, 2011  
 3500 NW STEWART PARKWAY NO SCALE  
 ROSEBURG, OR. 97470 KEY # 15467 SHEET 2 OF 5  
 DESIGNED: LOGAN MILES PROJ. NO. 0019-0084.68  
 DRAWN: LOGAN MILES CHK'D: ARON CUTSFORTH

Co. Rd. #6 MP 4.35-5.20 Co. Rd. #31A MP 0.65-0.49

04350MON