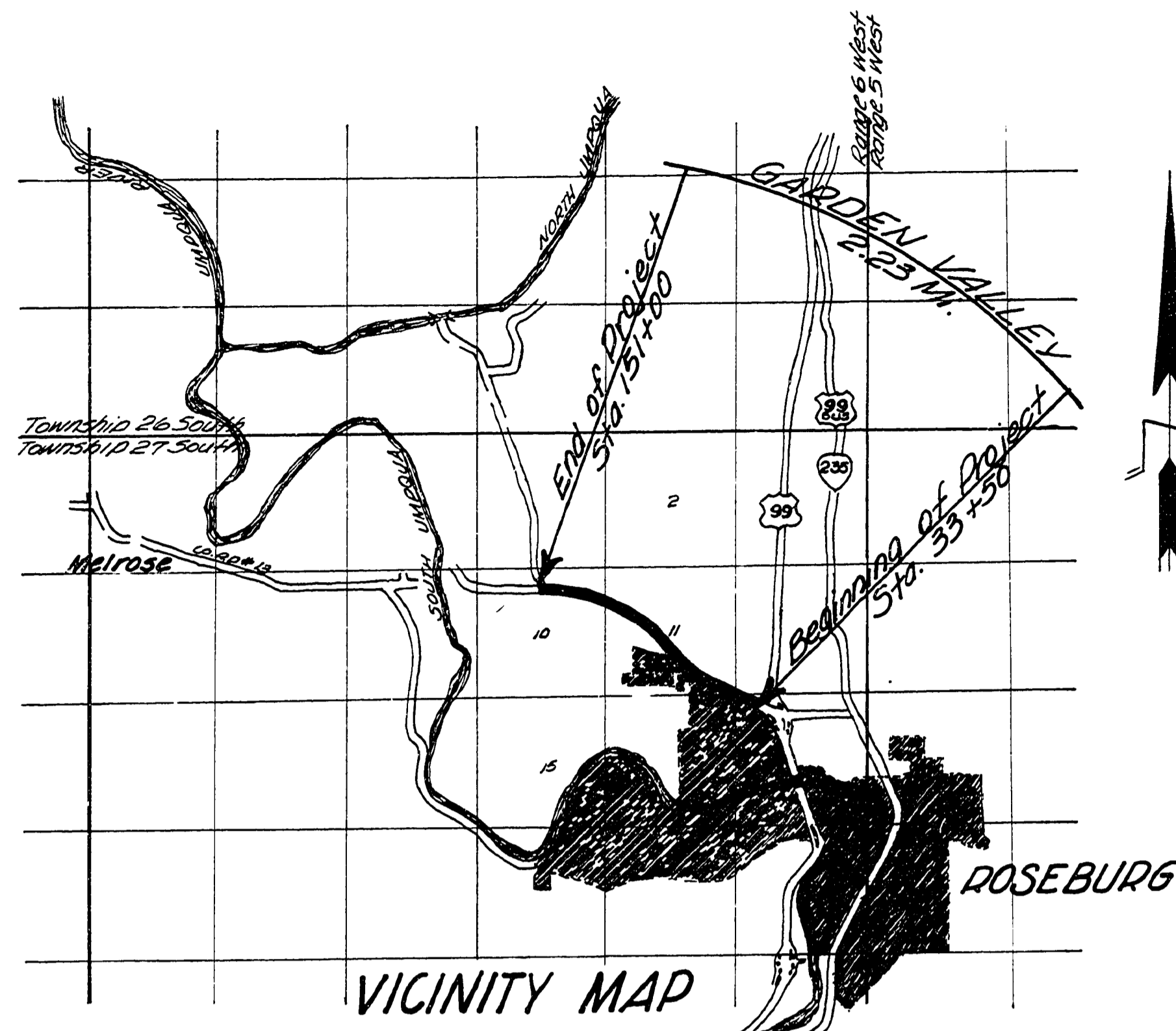


# DOUGLAS COUNTY OREGON

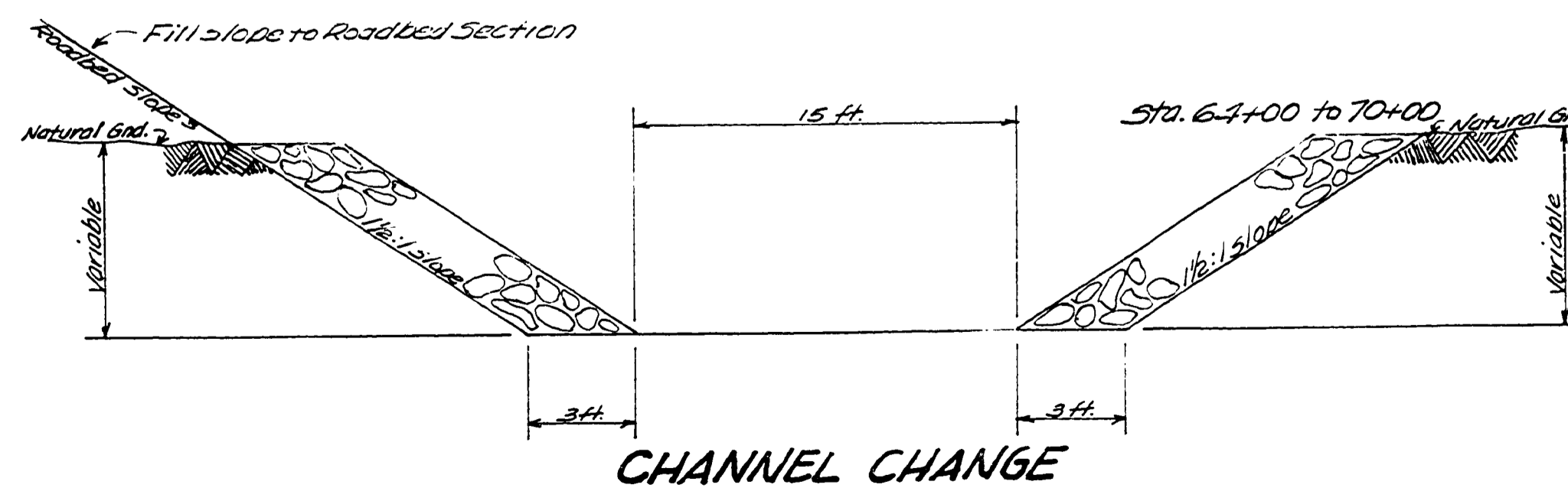
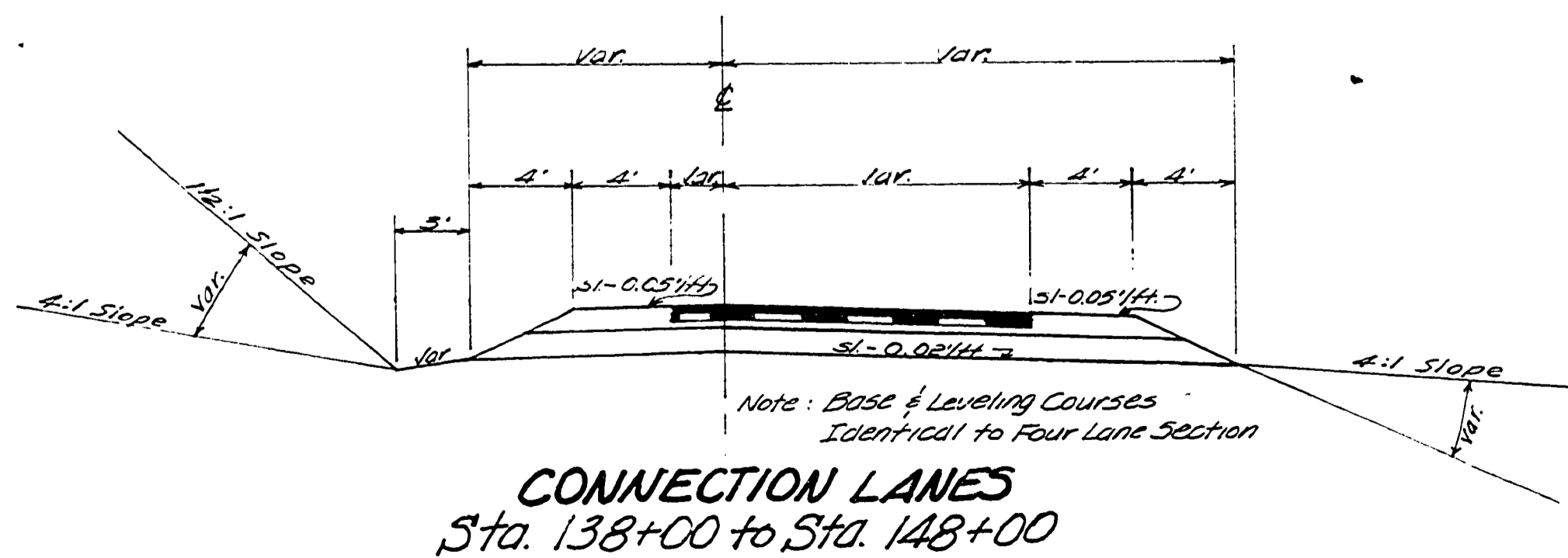
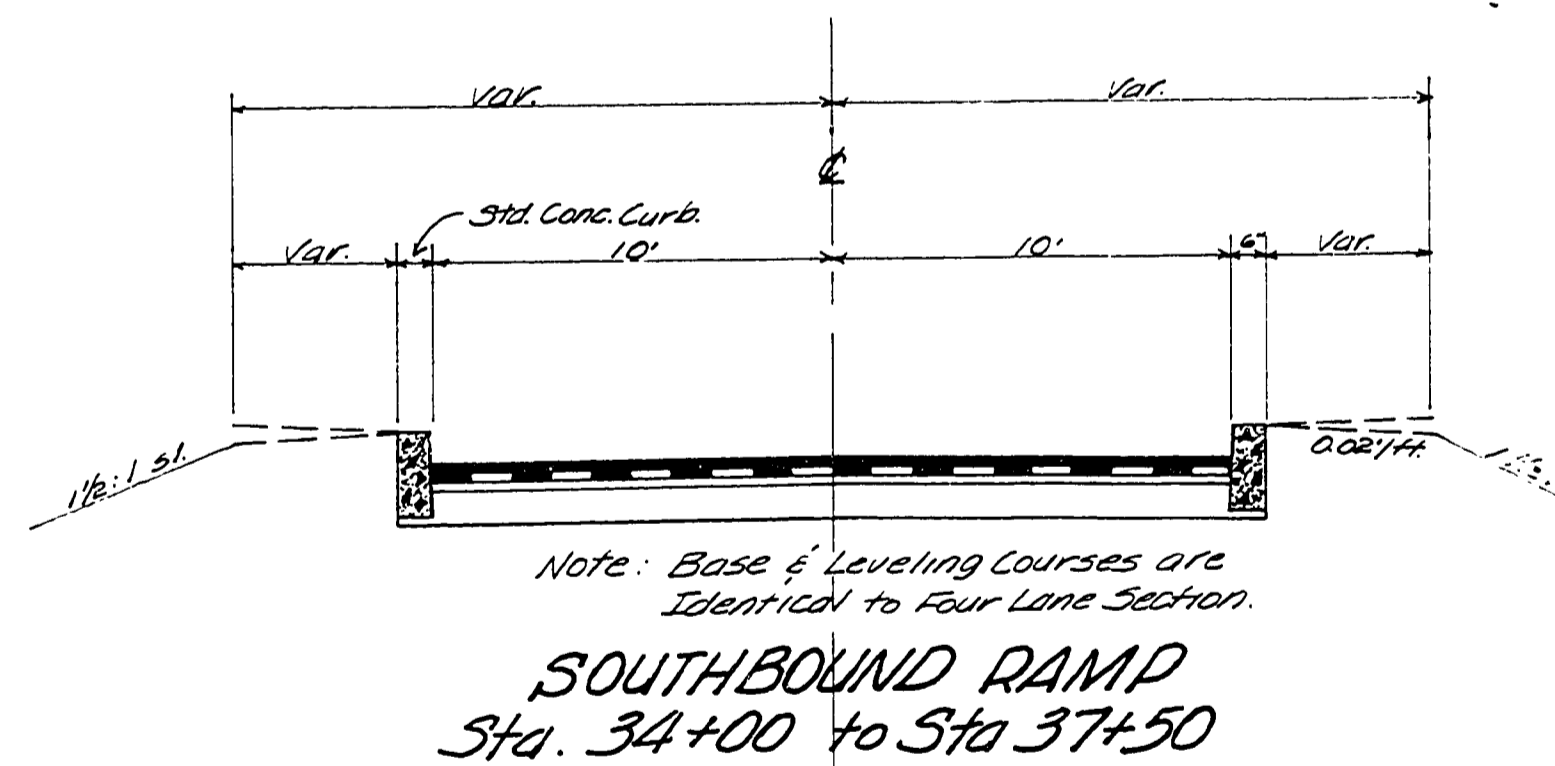
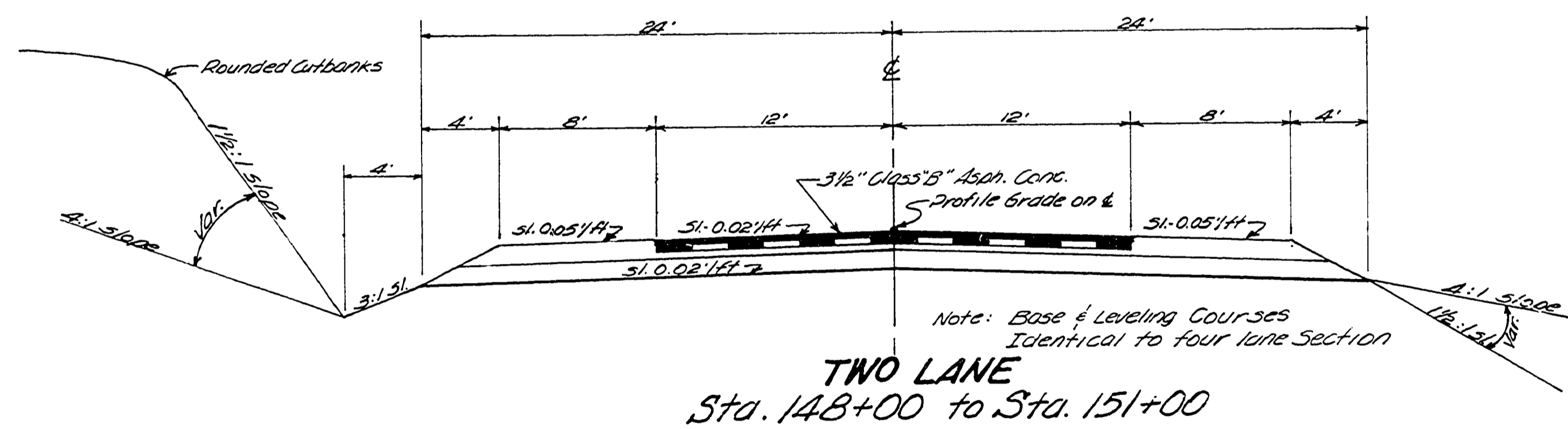
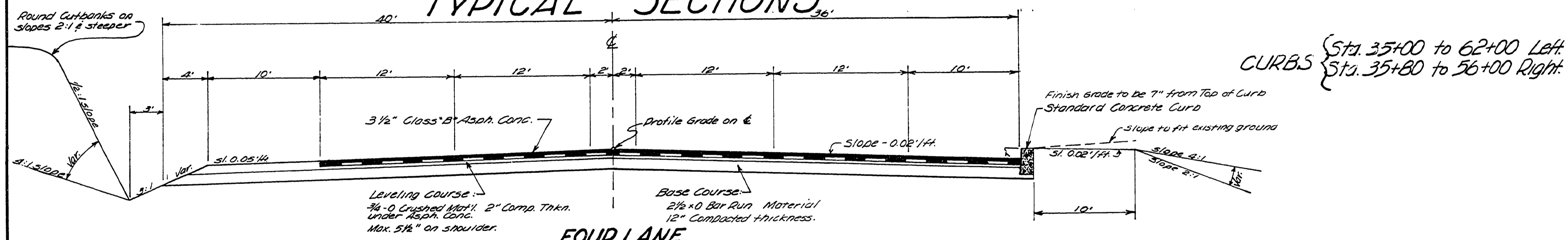
AS CONSTRUCTED

## GRADING & PAVING GARDEN VALLEY ROAD

COUNTY ROAD NO. 6



### TYPICAL SECTIONS



APPROVED George E. Smith Date May 29, 1962  
7337, 270K.

1962  
1 of 6

0062TYPE