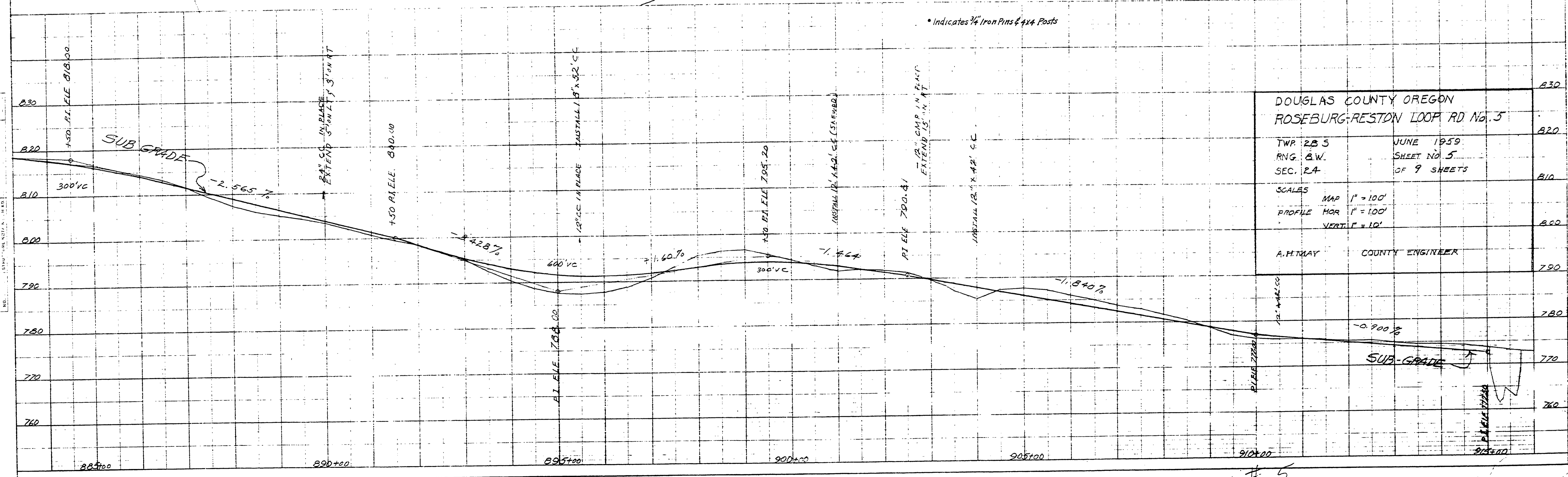
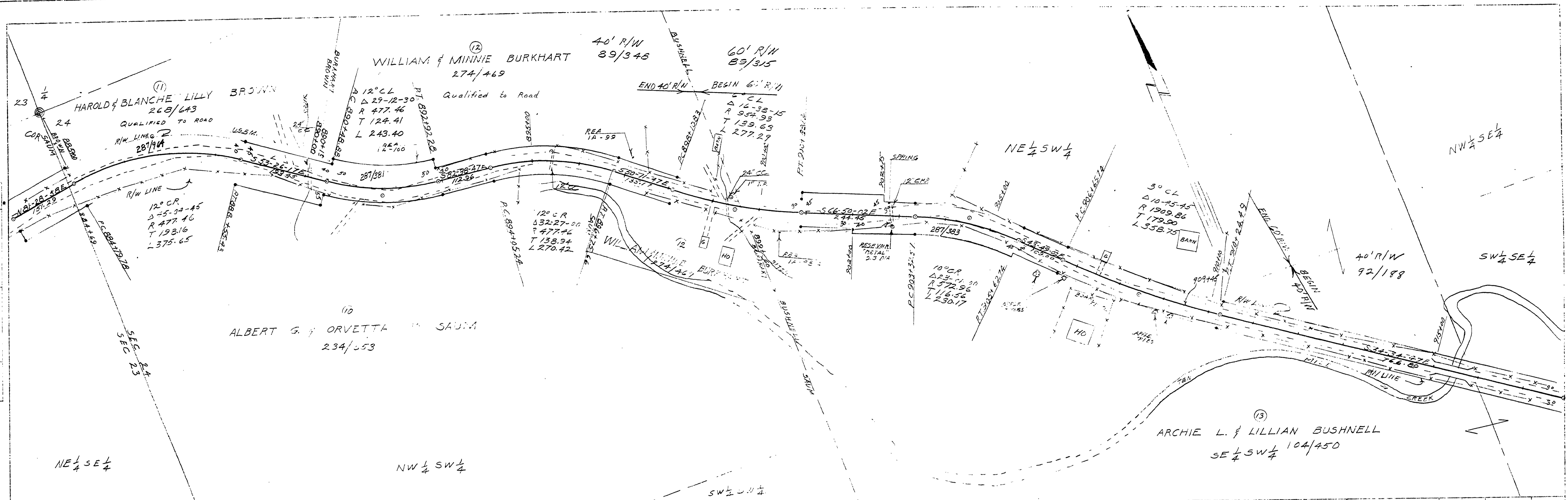


PLAN
 ELABORATED
 PRINTED
 NOTE: SUP. - AT 10' INTERVALS
 NO.

PROFILE
 GRADES
 NOTE: SUP. - AT 10' INTERVALS
 NO.



DOUGLAS COUNTY OREGON
 ROSEBURG-RESTON LOOP RD No. 5
 TWP 28 S
 RING. B.W.
 SEC. 24
 JUNE 1959
 SHEET NO. 5
 OF 9 SHEETS
 SCALES
 MAP 1" = 100'
 PROFILE HOR 1" = 100'
 VERT. 1" = 10'
 A. H. MAY COUNTY ENGINEER

PLATE 1-PLAN-PROFILE 6" P.R. & R.E. STANDARD
 60 RAD. PAPER MADE AND PRINTED IN U.S.A.
 EUGENE DIETZGEN CO.

M.P. 16.70-17.29

R1 # 5
 ROSEBURG-RESTON RD # 5 SHEET 5 of 9 SHEETS
 JUNE 1959

16701729