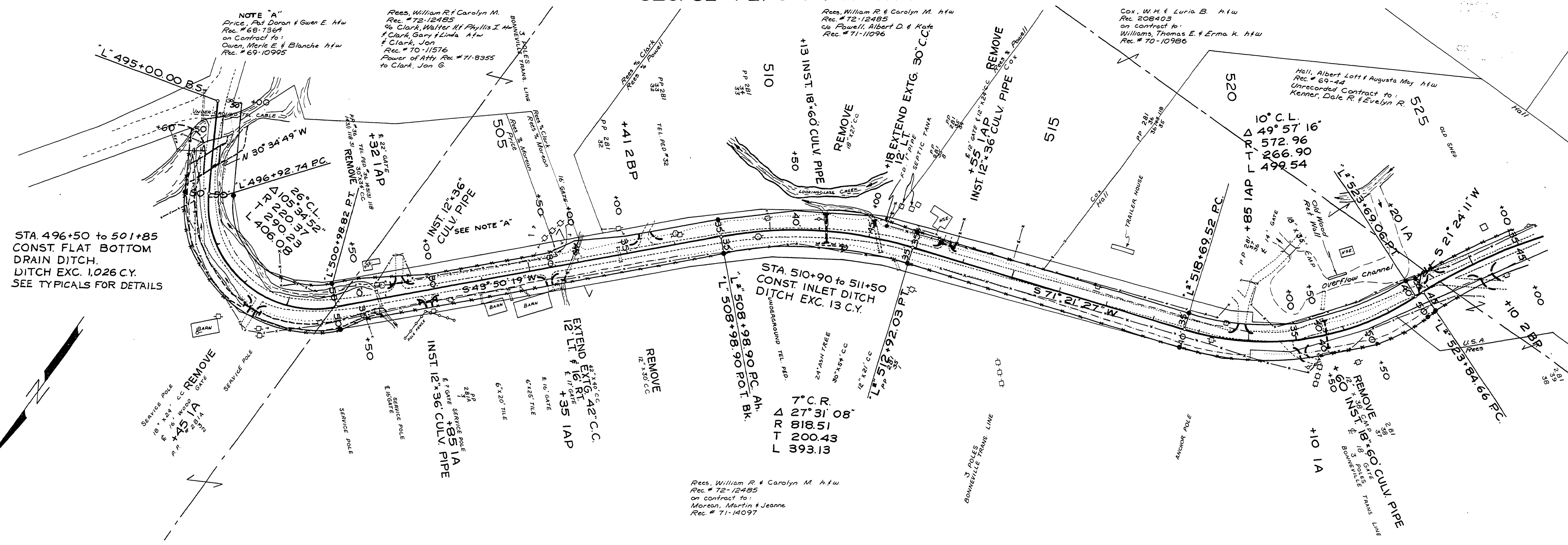


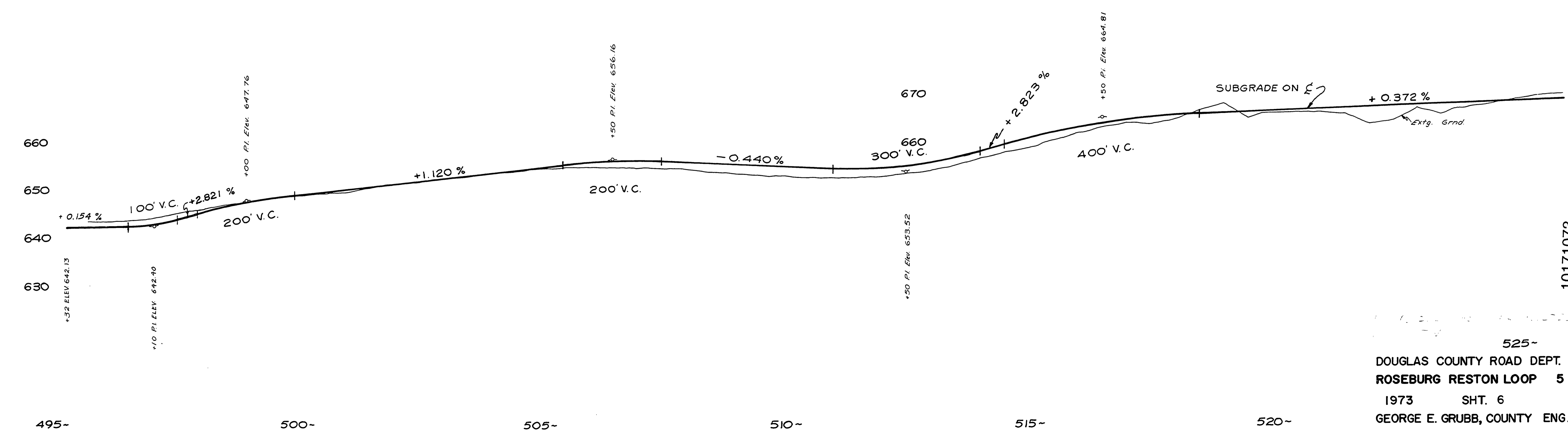
SEC. 32 T 27S R 7W WM

RD. 5



STA. 496+50 to 501+85
CONST. FLAT BOTTOM
DRAIN DITCH.
DITCH EXC. 1,026 C.Y.
SEE TYPICALS FOR DETAILS

STA. 510+90 to 511+50
CONST. INLET DITCH
DITCH EXC. 13 C.Y.



525-
DOUGLAS COUNTY ROAD DEPT.
ROSEBURG RESTON LOOP 5
1973 SHT. 6
GEORGE E. GRUBB, COUNTY ENG.

M.P. 1C-17-10.73

Rd. #5 1973 525-6 of 12 (32)

10171073

