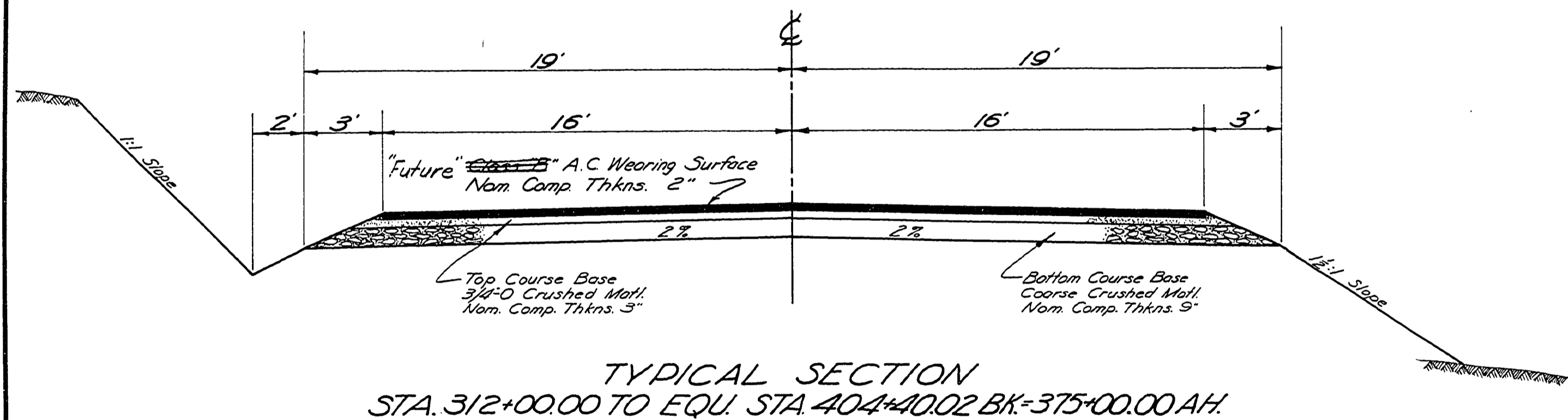


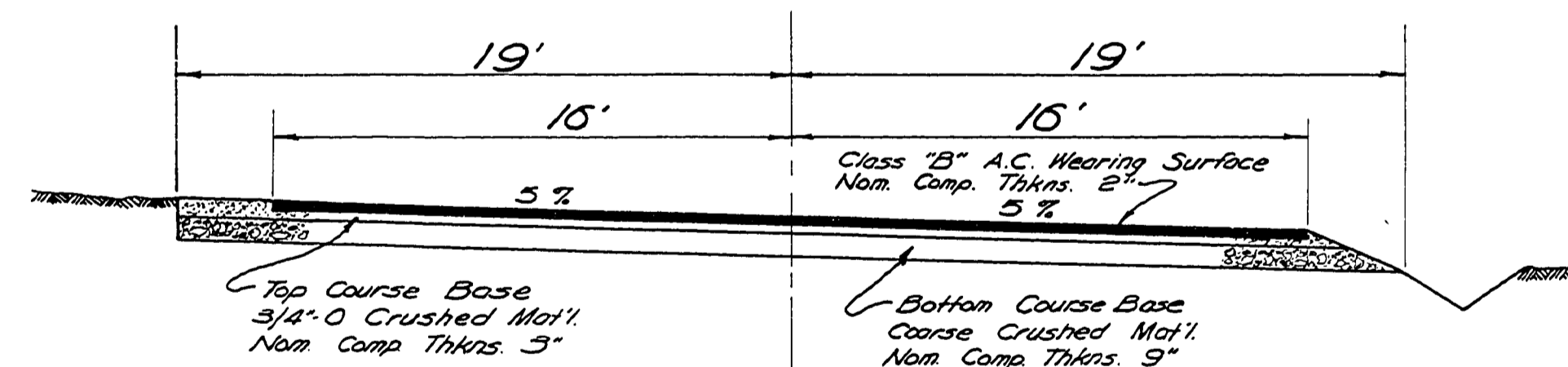
VICINITY MAP

DOUGLAS COUNTY, OREGON
 PLANS FOR PROPOSED PROJECT
 GRADING & SURFACING
ROSEBURG RESTON LOOP, ROAD NO. 5
 MILE POINT 6.23 to MILE POINT 7.87
 SEPT. 1969

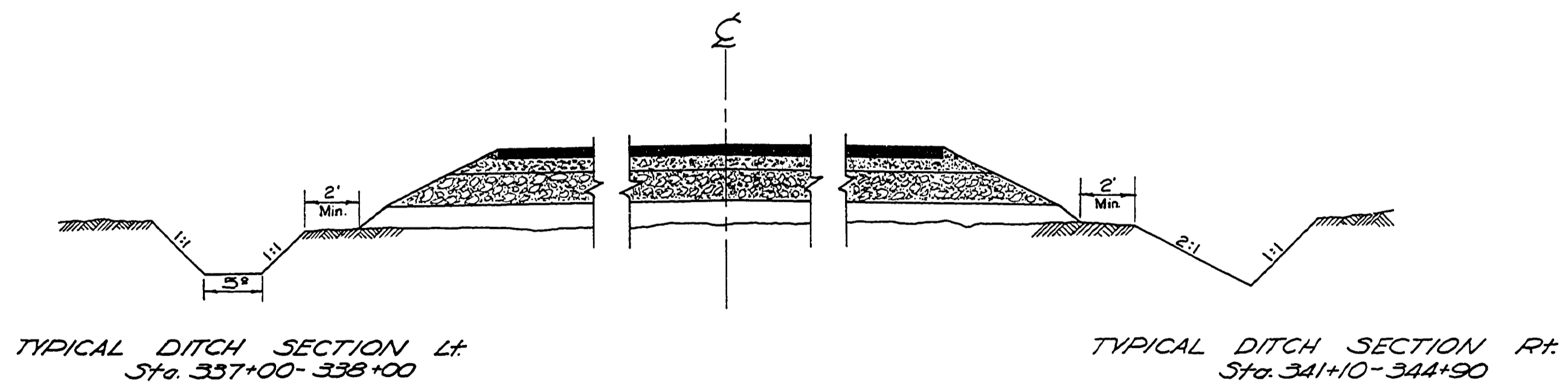
THESE PLANS CONTAIN
 SHEETS 1 THROUGH 6
 1 SHEET PIPE LIST
 1 SHEET STANDARD SYMBOLS
 TOTAL 8 SHTS.



TYPICAL SECTION
 STA. 312+00.00 TO EQU. STA. 404+00.02 BK-315+00.00 AH.



TYPICAL SECTION
 Sta. 325+00 to Sta. 327+00 (Rd. #47)
 Note: Sta. 324+00 to 325+00 and
 327+00 to 328+00 transition
 sections from normal crown.



TYPICAL DITCH SECTION LH
 Sta. 337+00-338+00

TYPICAL DITCH SECTION RH
 Sta. 341+10-344+90

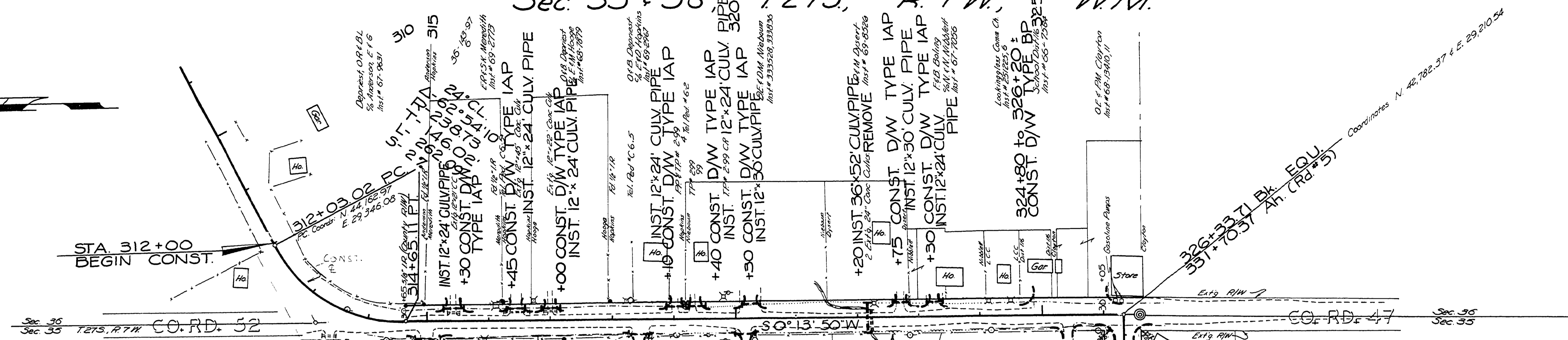


Douglas County Road Dept.
 ROSEBURG-RESTON-LOOP#5
 Date: Sept. 1969 Sht. 1 of 6
 George E. Grubb County Engineer

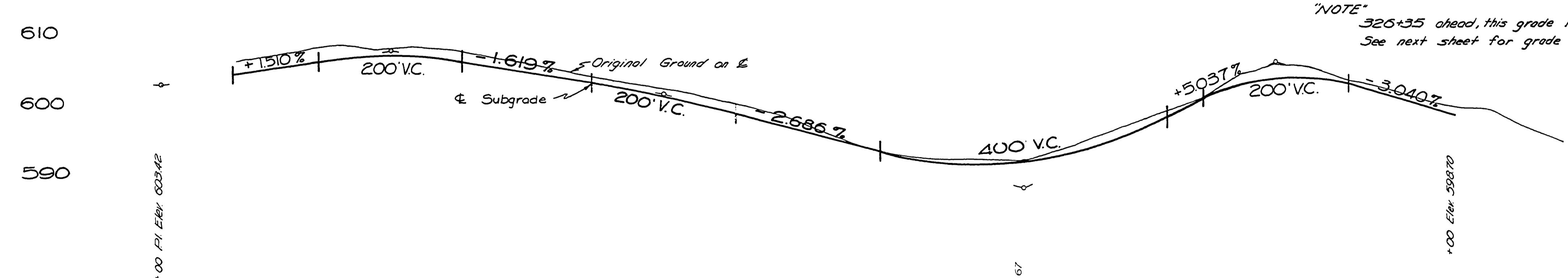
0623078C

Rd #5 247 1969 1-1-69 19

Sec. 35 & 36 T275, R 7 W, W.M.



NOTE: See previous section of Rd #5 (mp. 3.43 to mp. 6.25) for R/W and R/W curve data, sta. 312+00 to 314+65.



NOT RECORDED
 STA. 312+00 to STA. 326+35
 EXC. 1,914 C.Y.
 EMB. 1,812 C.Y.
 Douglas County Road Dept.
 ROSEBURG-RESTON-LOOP #5
 Date: Sept. 1969 Sheet 3 of 6
 George E. Grubb County Engineer

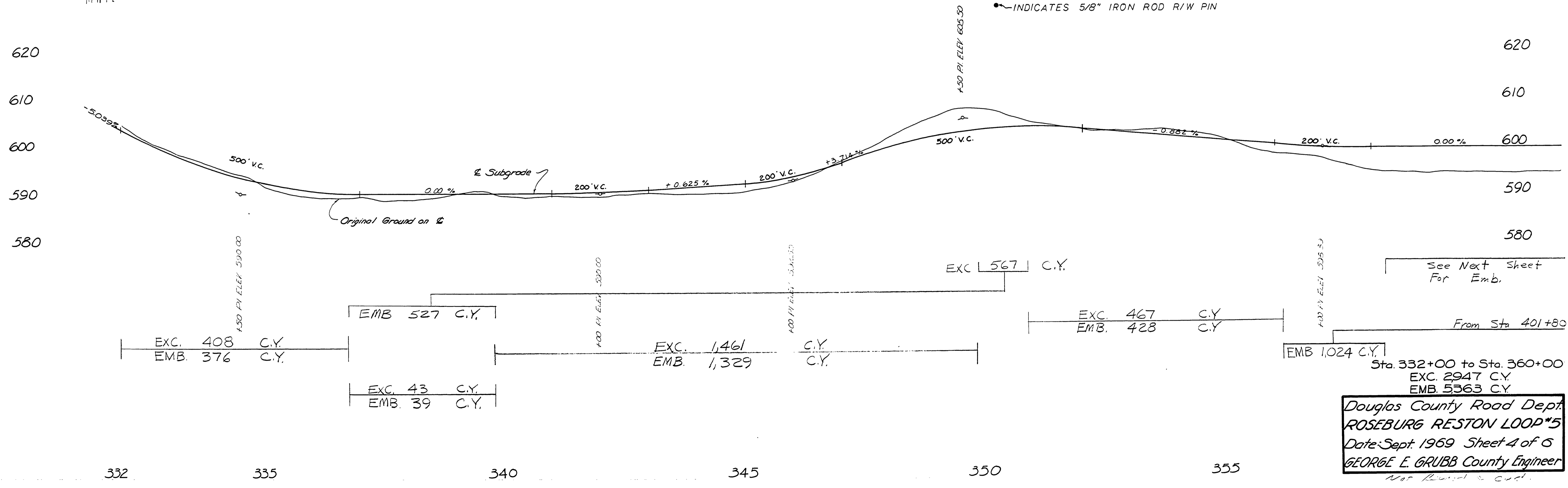
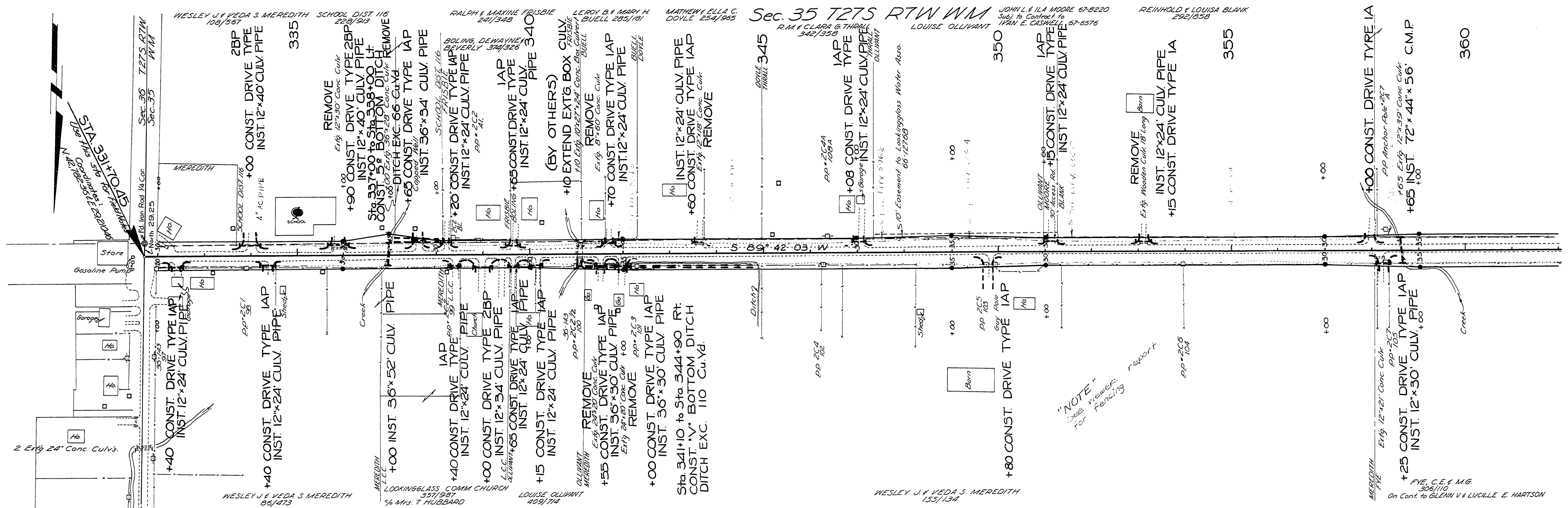
06230650

310 315 320 325

M.P. 6.23-6.50

Rd #5

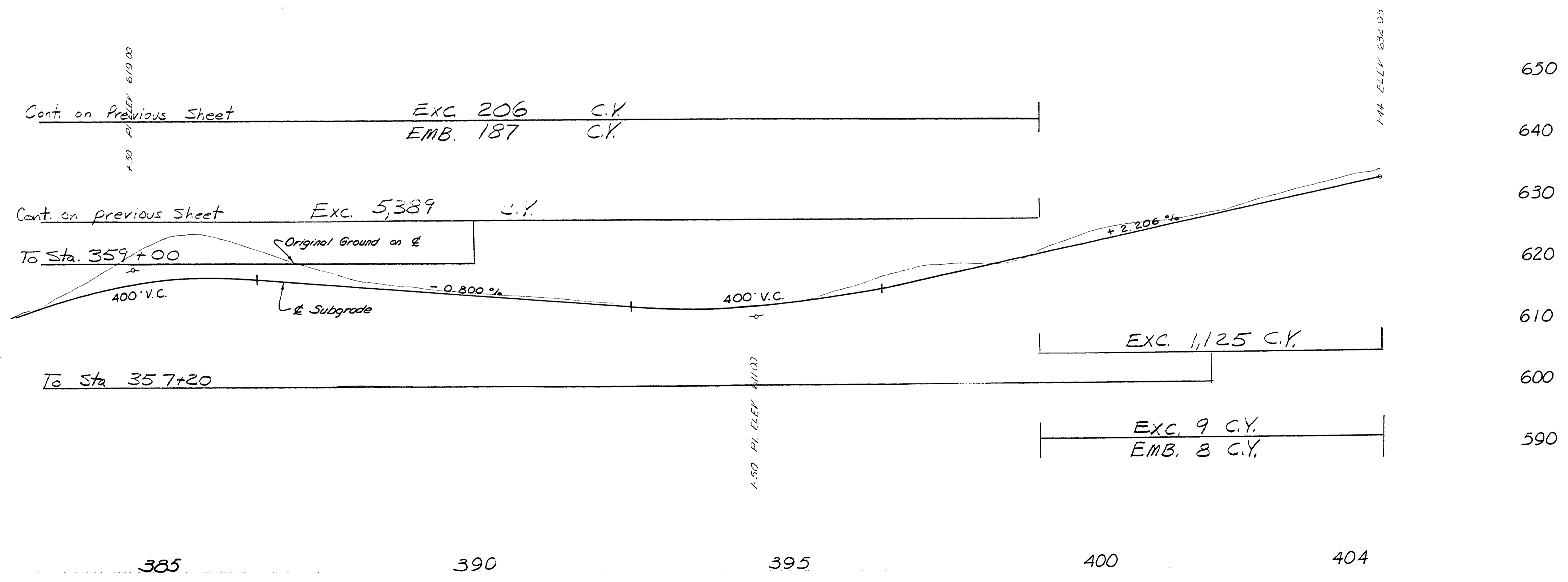
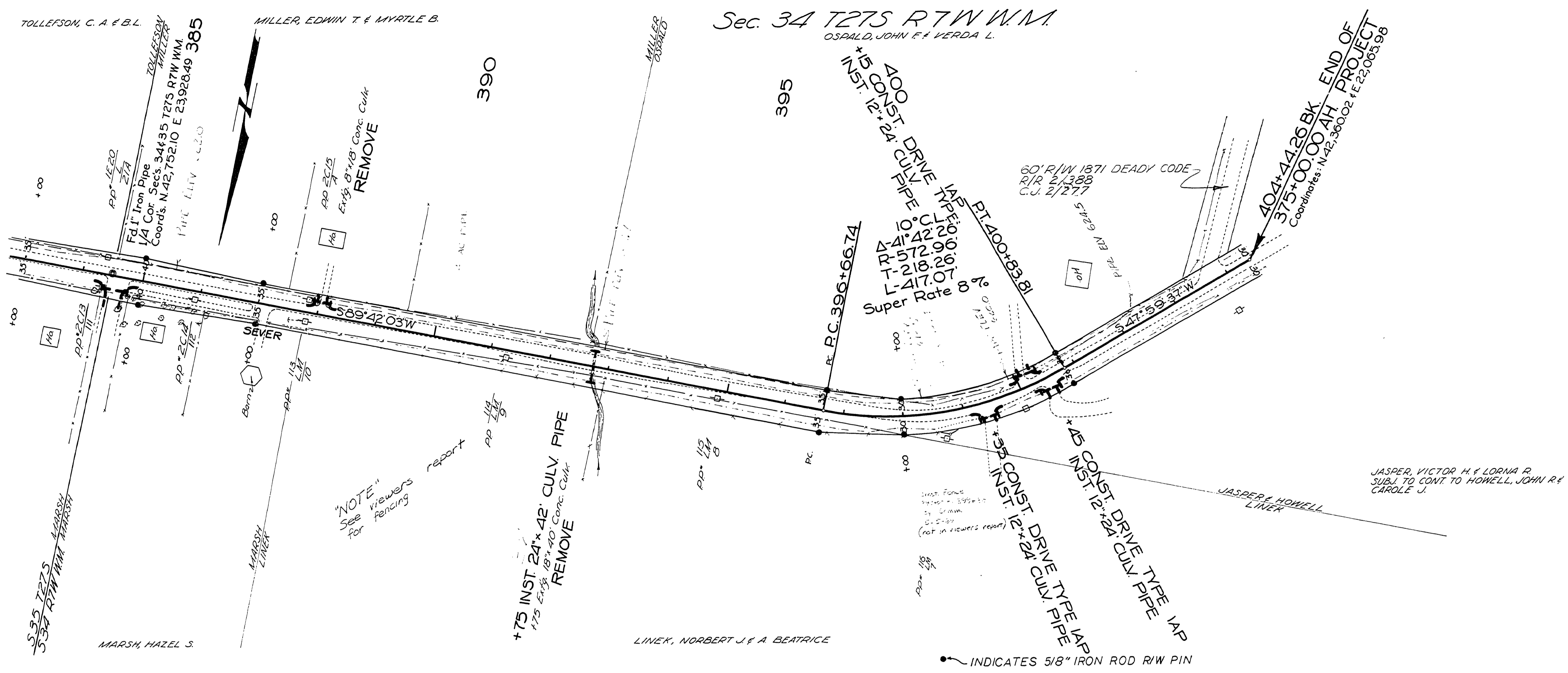




Douglas County Road Dept.
 ROSEBURG RESTON LOOP #5
 Date: Sept. 1969 Sheet 4 of 6
 GEORGE E. GRUBB County Engineer
 Not Reused or Coded.

RA#5

06500707



Sta. 385+00 to Sta. 404+44
 EXC. 5,937 C.Y.
 EMB. 214 C.Y.

Douglas County Road Dept.
ROSEBURG RESTON LOOP #5
 Date: Sept. 1969 Sheet 6 of 6
 GEORGE E. GRUBB County Engineer

07600787

R.H. #5

M.P. 7.60 - 7.87