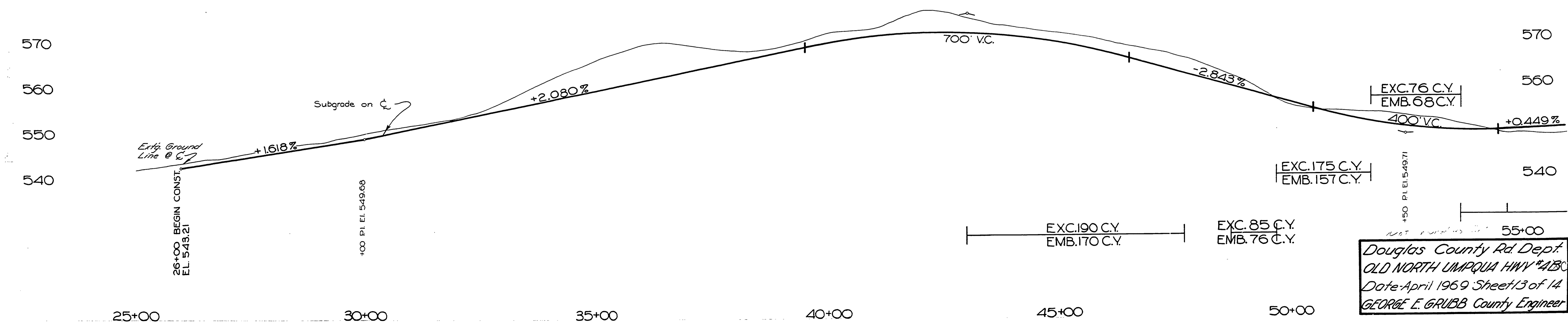


**NOTE**  
 13,046 C.Y. OF EXC.  
 TO BE HAULED TO  
 RD. 4, STA. 246+00=  
 RD. 4B STA. 43+00.

OVERHAUL 51.6 C" YD. STAS.	EXC. 532 C.Y.
OVERHAUL 83.7 C" YD. STA.	EXC. 2513 C.Y.
OVERHAUL 1878.6 C" YD. STAS.	FROM STA. 67+00
" " " " " "	" " " " " " 80+00



Douglas County Rd Dept.  
 OLD NORTH UMPQUA HWY #4B  
 Date: April 1969 Sheet 13 of 14  
 GEORGE E. GRUBB County Engineer