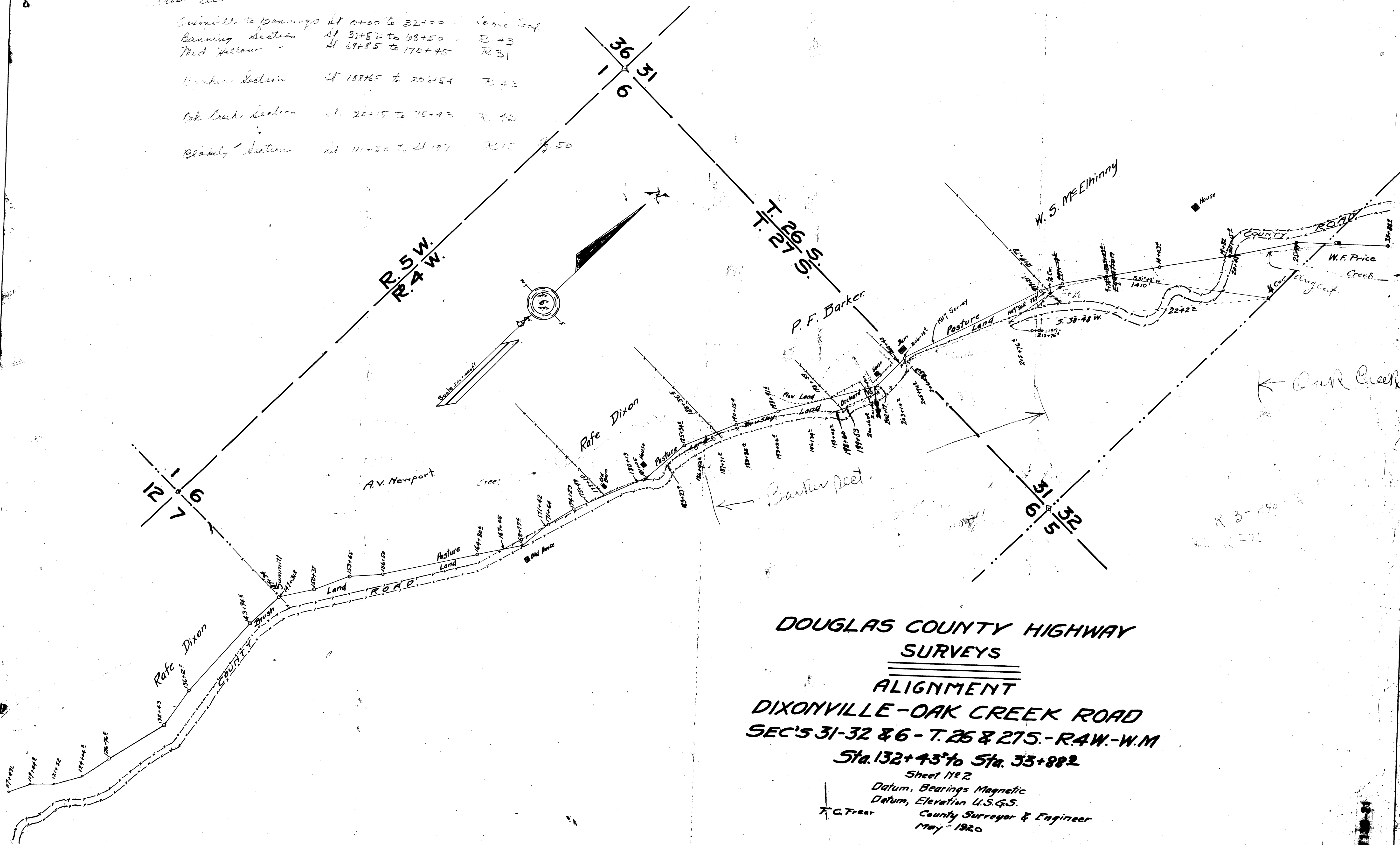


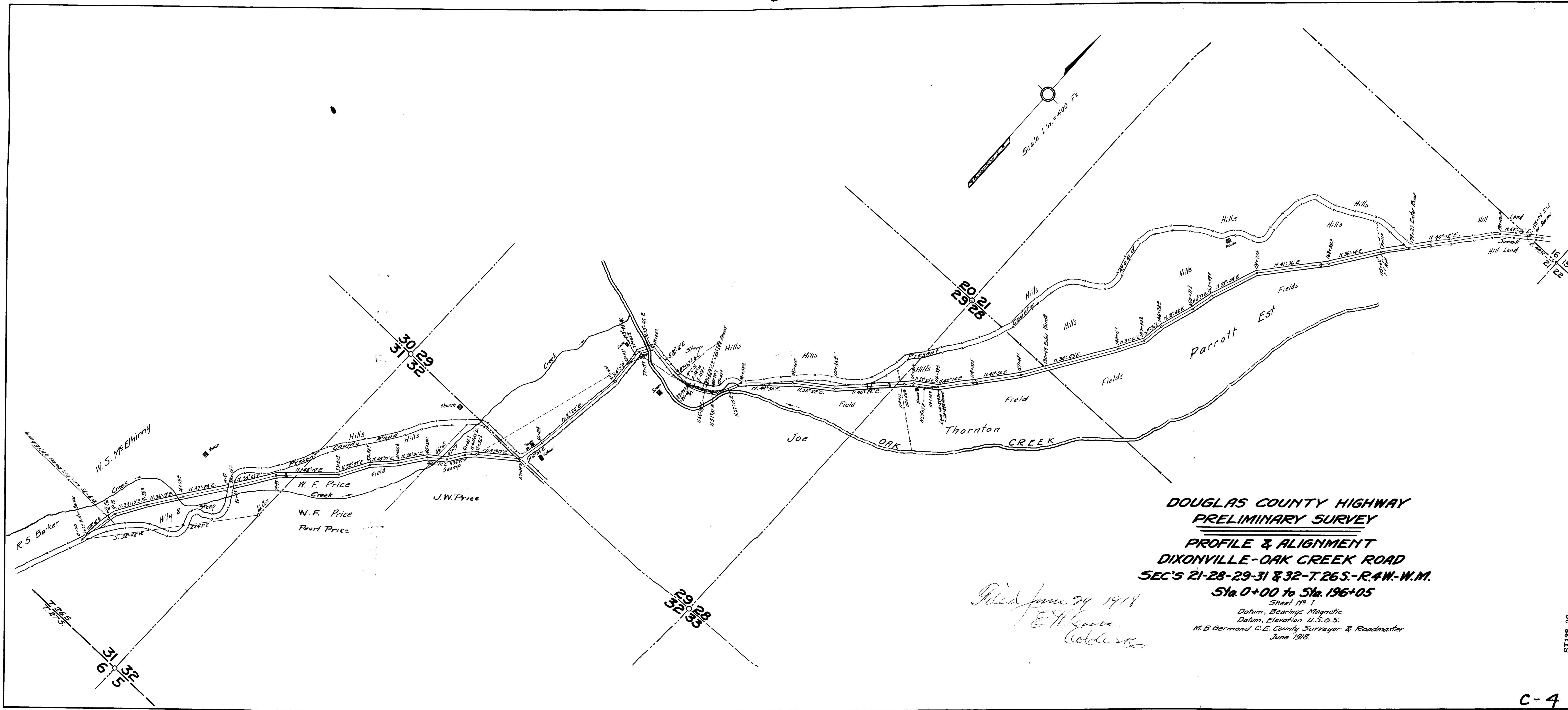
Cross sections

Cassonville to Bannings	St 0+00 to 32+00	Scale 1/4" = 100'
Banning Section	St 32+52 to 68+50	R. 43
Mud Hollow	St 69+85 to 170+45	R 31
Barker Section	St 189+65 to 206+54	R 42
Oak Creek Section	St 20+15 to 76+43	R 43
Blakely Section	St 111+50 to 4197	R 15 of 50



DOUGLAS COUNTY HIGHWAY SURVEYS
ALIGNMENT
DIXONVILLE-OAK CREEK ROAD
SEC'S 31-32 & 6 - T. 26 & 27 S. - R. 4 W. - W.M
Sta. 132+43 to Sta. 33+88.2
 Sheet No 2
 Datum, Bearings Magnetic
 Datum, Elevation U.S.G.S.
 F.C. Frear County Surveyor & Engineer
 May 1920

Note - Lines shown in green represent the final location



Scale 1 in = 400 Ft.

**DOUGLAS COUNTY HIGHWAY
PRELIMINARY SURVEY
PROFILE & ALIGNMENT
DIXONVILLE-OAK CREEK ROAD
SEC'S 21-28-29-31 & 32-T.26S.-R.15W.-M.
Sta. 0+00 to Sta. 196+05**

Sheet No. 1
Datum, Bearings Magnetic
Datum, Elevation U.S.G.S.
M.B. Germond C.E. County Surveyor & Roadmaster
June 1918.

*Filed June 24 1918
E. H. Weaver
Caddess*

ST138-22

C-4
Road No. 4