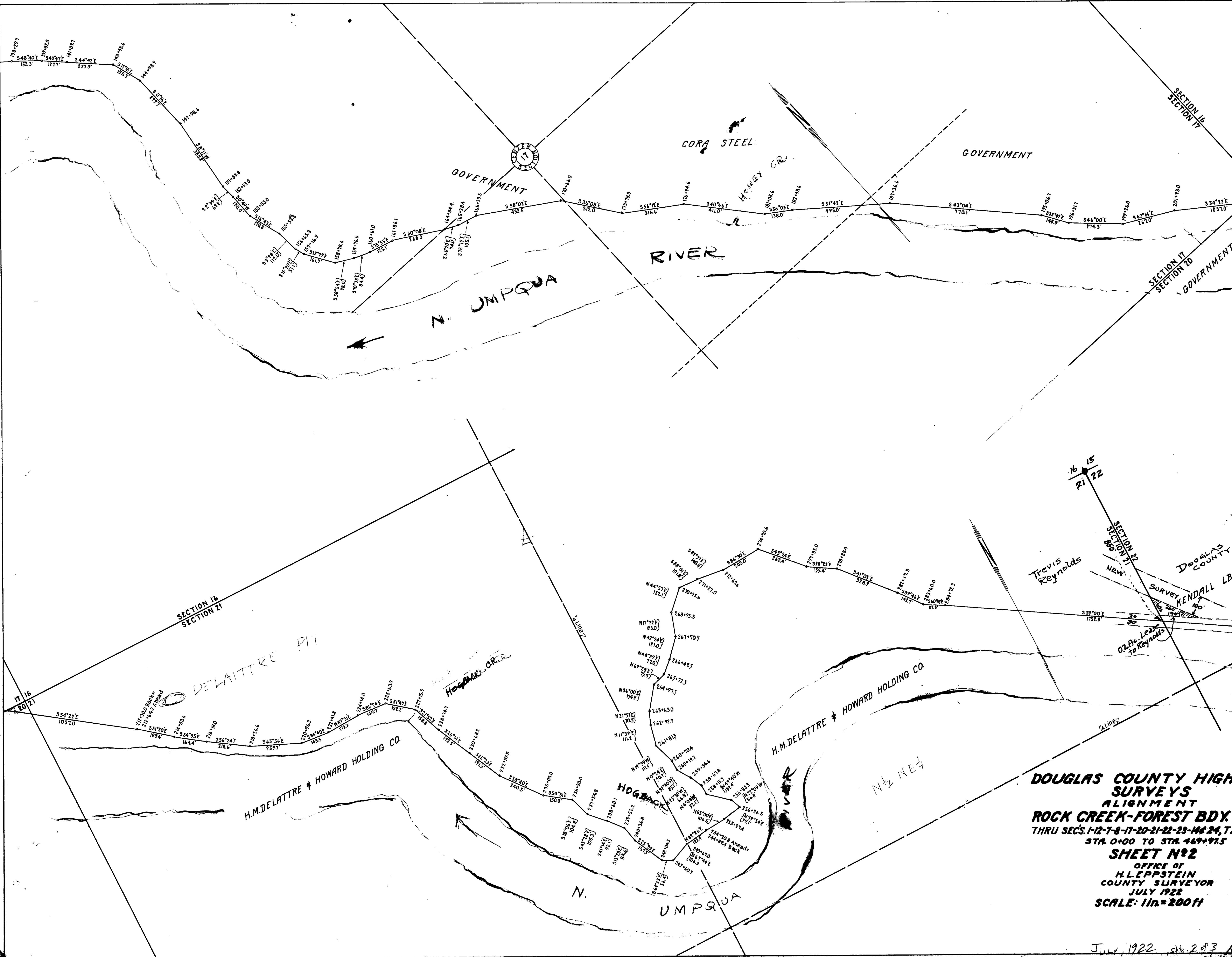


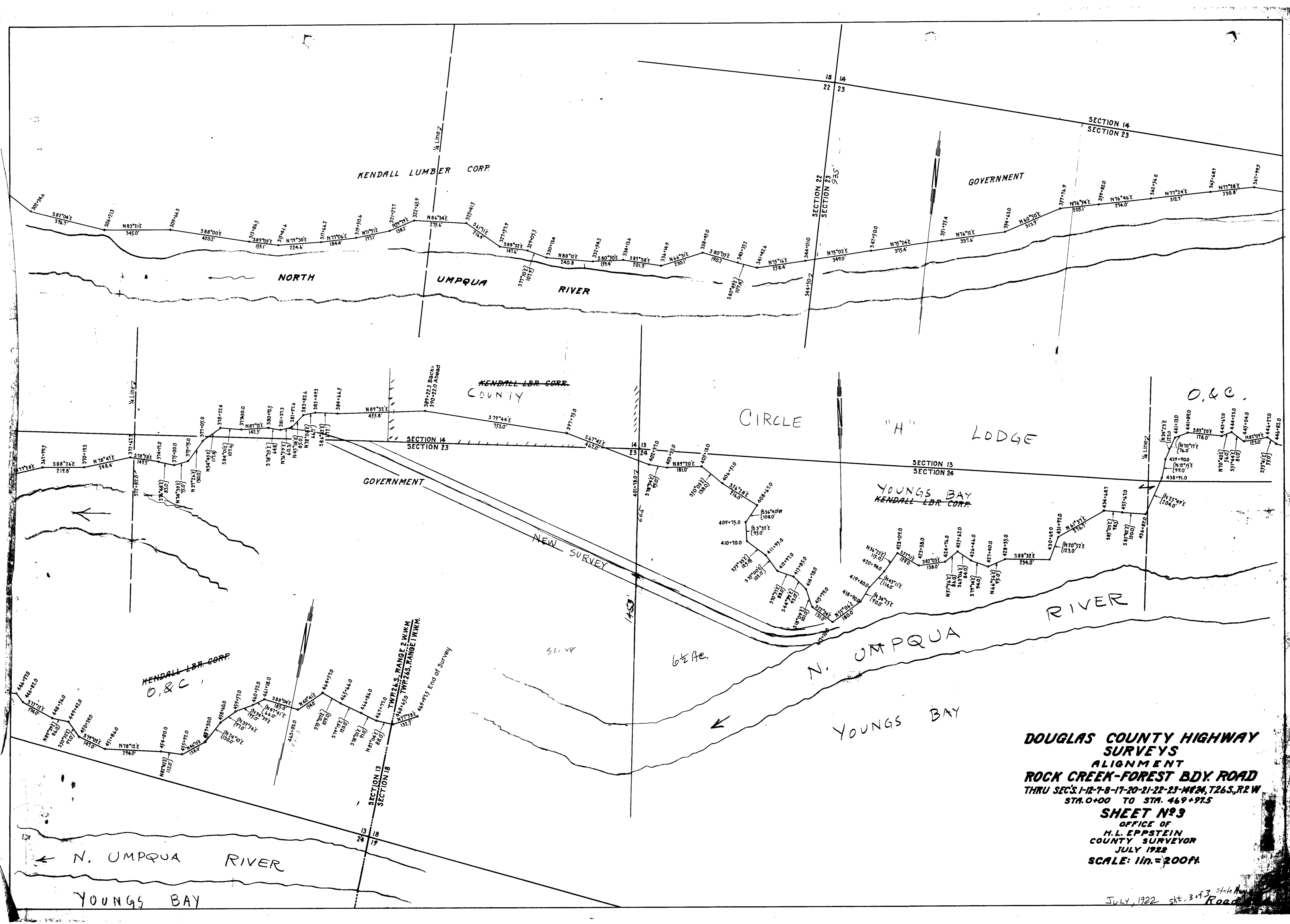
**DOUGLAS COUNTY HIGHWAY
SURVEYS
ALIGNMENT
ROCK CREEK-FOREST BDY. ROAD
THRU SECS. 12-17-20-21-22-23-14-24, T. 26S, R. 2W.
STA. 0+00 TO STA. 469+91.5
SHEET NO. 1
OFFICE OF
H. L. LEPPSTEIN
COUNTY SURVEYOR
JULY 1922
SCALE 1 in. = 200 ft.**

July, 1922 st. 1 of 3



DOUGLAS COUNTY HIGHWAY SURVEYS
ALIGNMENT
ROCK CREEK-FOREST BDY. R.
THRU SECS. 1-12-7-8-17-20-21-22-23-14-24, T26
STA. 0+00 TO STA. 469+91.5
SHEET N°2
 OFFICE OF
 H. LEPPSTEIN
 COUNTY SURVEYOR
 JULY 1922
 SCALE: 1 in = 200 ft

July, 1922 sit 2 of 3 R.



DOUGLAS COUNTY HIGHWAY SURVEYS
ALIGNMENT
ROCK CREEK-Forest Bdy. Road
 THRU SEC'S 12-17-8-17-20-21-22-23-24, 226S, R2E W
 STA. 0+00 TO STA. 469+97.5
SHEET No 3
 OFFICE OF
H. L. EPPSTEIN
 COUNTY SURVEYOR
 JULY 1922
 SCALE: 1 in. = 200 ft.