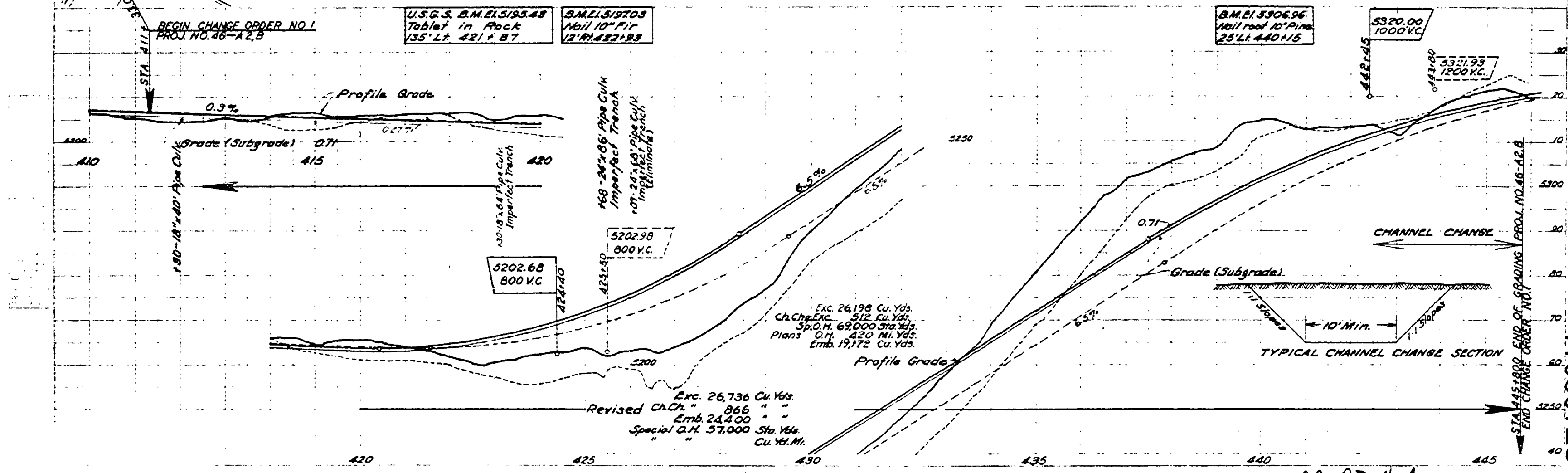
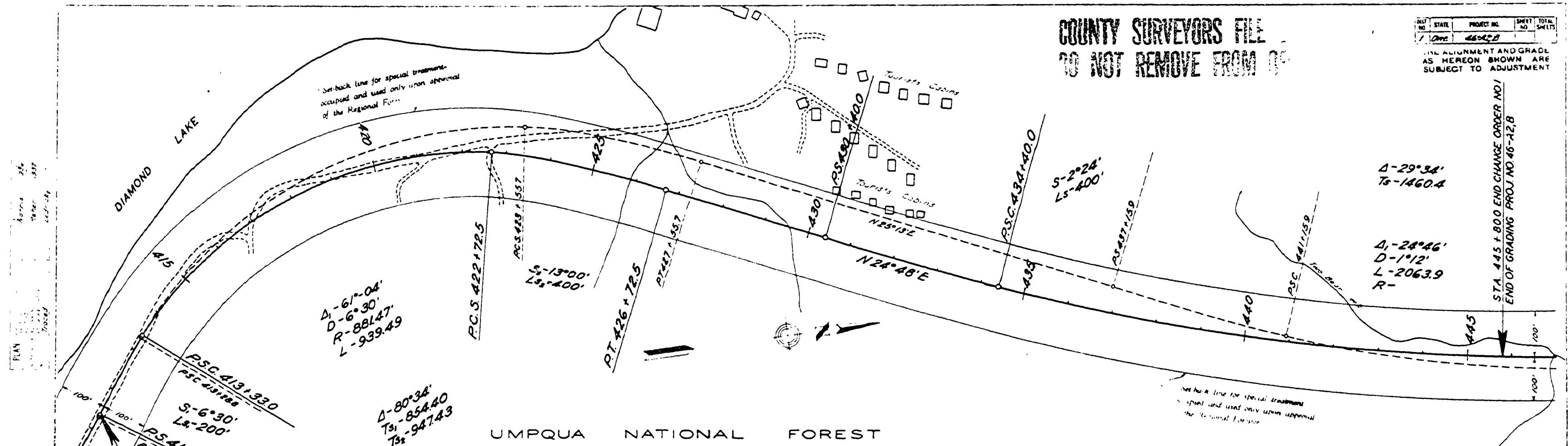


COUNTY SURVEYORS FILE
DO NOT REMOVE FROM OFFICE

| STATE | PROJECT NO. | SHEET NO. | TOTAL SHEETS |
|-------|-------------|-----------|--------------|
| OR | 46-42-B | 1 | 1 |

ALL ALIGNMENT AND GRADE AS HEREON SHOWN ARE SUBJECT TO ADJUSTMENT



CO. RD. # 4

(70)

ST138011

PLAN
 1/4" = 100'
 1/8" = 100'
 1/16" = 100'

Set-back line for special treatment
 occupied and used only upon approval
 of the Regional Form.

Set-back line for special treatment
 occupied and used only upon approval
 of the Regional Form.

STA. 445 + 800 END CHANGE ORDER NO. 1
 END OF GRADING PROJ. NO. 46-42-B

BEGIN CHANGE ORDER NO. 1
 PROJ. NO. 46-A2,B

U.S.G.S. B.M. 15195.43
 Tablet in Rock
 135' Lt. 421 + 87

B.M. 1519703
 Nail 10" Fir
 12' Rt. 427 + 93

B.M. 15306.96
 Nail roof 10" Pine
 25' Lt. 440 + 15

5320.00
 1000' V.C.

5321.93
 1200' V.C.

Exc. 26,198 Cu. Yds.
 Ch. Ch. Exc. 512 Cu. Yds.
 Sp. O.M. 69,000 Sta. Yds.
 Plans O.M. 420 Mi. Yds.
 Emb. 19,172 Cu. Yds.

Exc. 26,736 Cu. Yds.
 Ch. Ch. " 866 " "
 Emb. 24,400 " "
 Special O.M. 57,000 Sta. Yds.
 " " " " Cu. Yd. Mi.