

UMPQUA

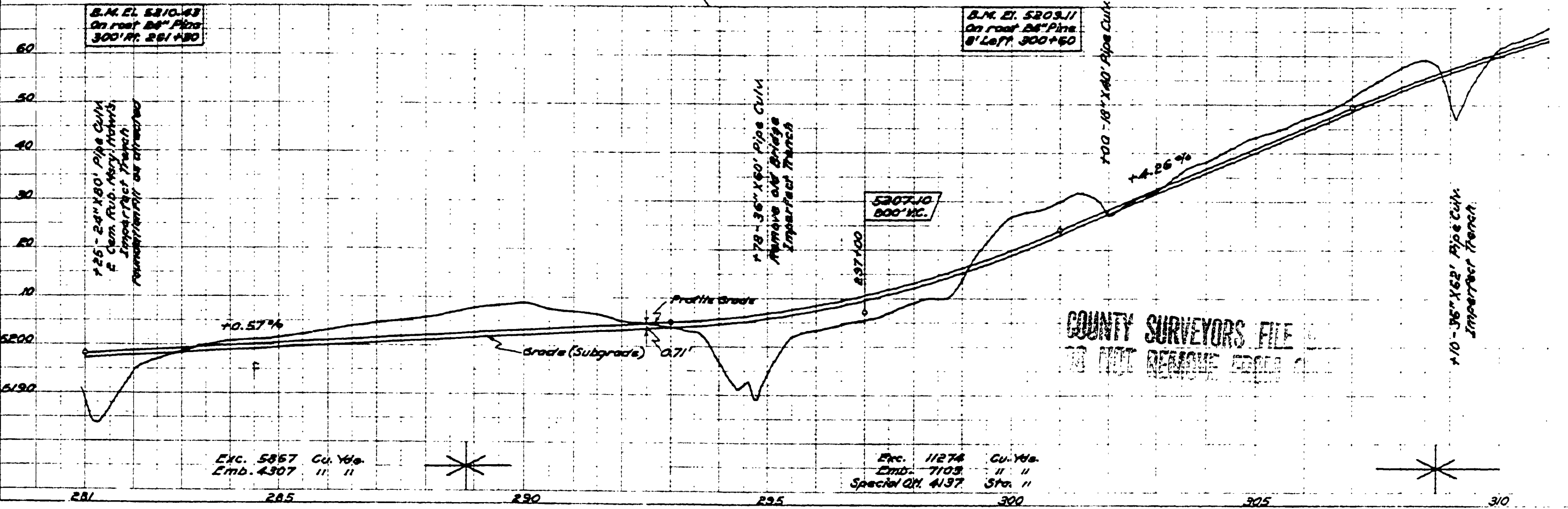
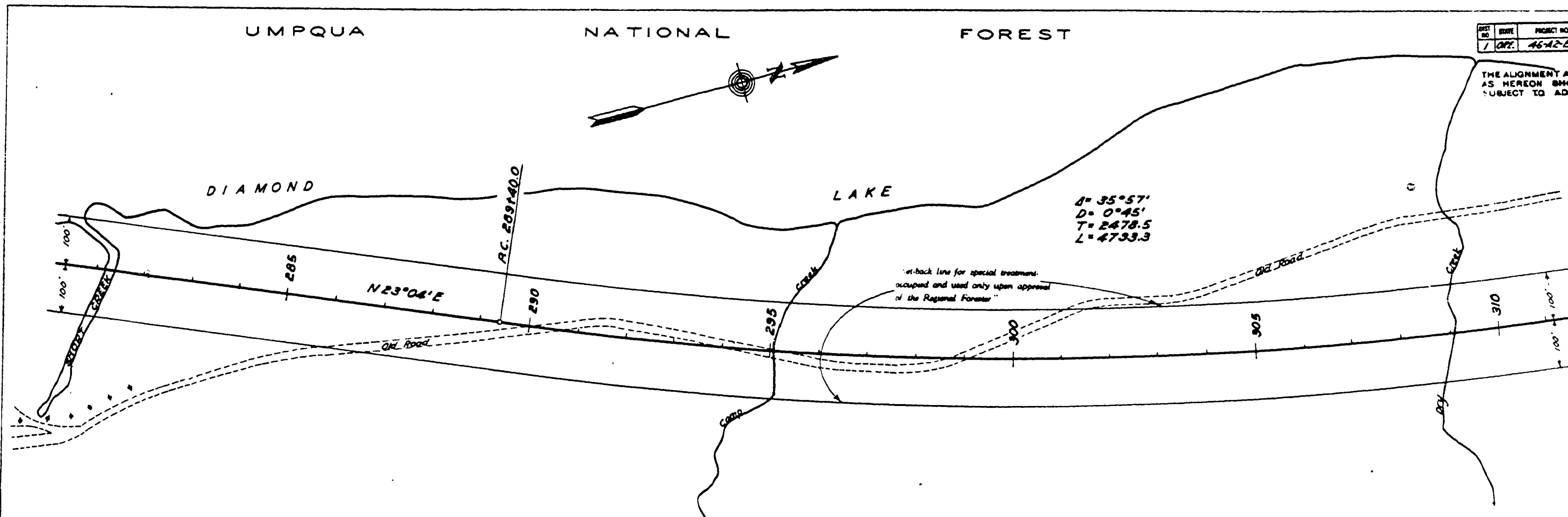
NATIONAL

FOREST

SHEET NO.	SHEET TO A
5	12

THE ALIGNMENT AND GRAD. AS HEREON SHOWN ARE SUBJECT TO ADJUSTMENT

PLAN
 Morris
 V.B. Fisher
 Wandering
 1937
 Traced



B.M. EL. 5210.63
 On road 84" Pine
 300' RT. 281+80

B.M. EL. 5203.11
 On road 84" Pine
 8' Left 300+60

125'-24" X 80' Pipe Culm
 E. Cem. Sub. Mary, Adams
 Imperfect Tranch
 removed/removed or destroyed

178'-36" X 60' Pipe Culm
 Remove old Bridge
 Imperfect Tranch

100'-18" X 40' Pipe Culm

110'-36" X 62' Pipe Culm
 Imperfect Tranch

COUNTY SURVEYORS FILE
 DO NOT REMOVE FROM FILE

Exc. 5857 Cu. Yds.
 Emb. 4307 " "

Exc. 11274 Cu. Yds.
 Emb. 7105 " "
 Special QM. 4137 Sta. "

CO. RD. # 4

(64)

ST138005

M13-70