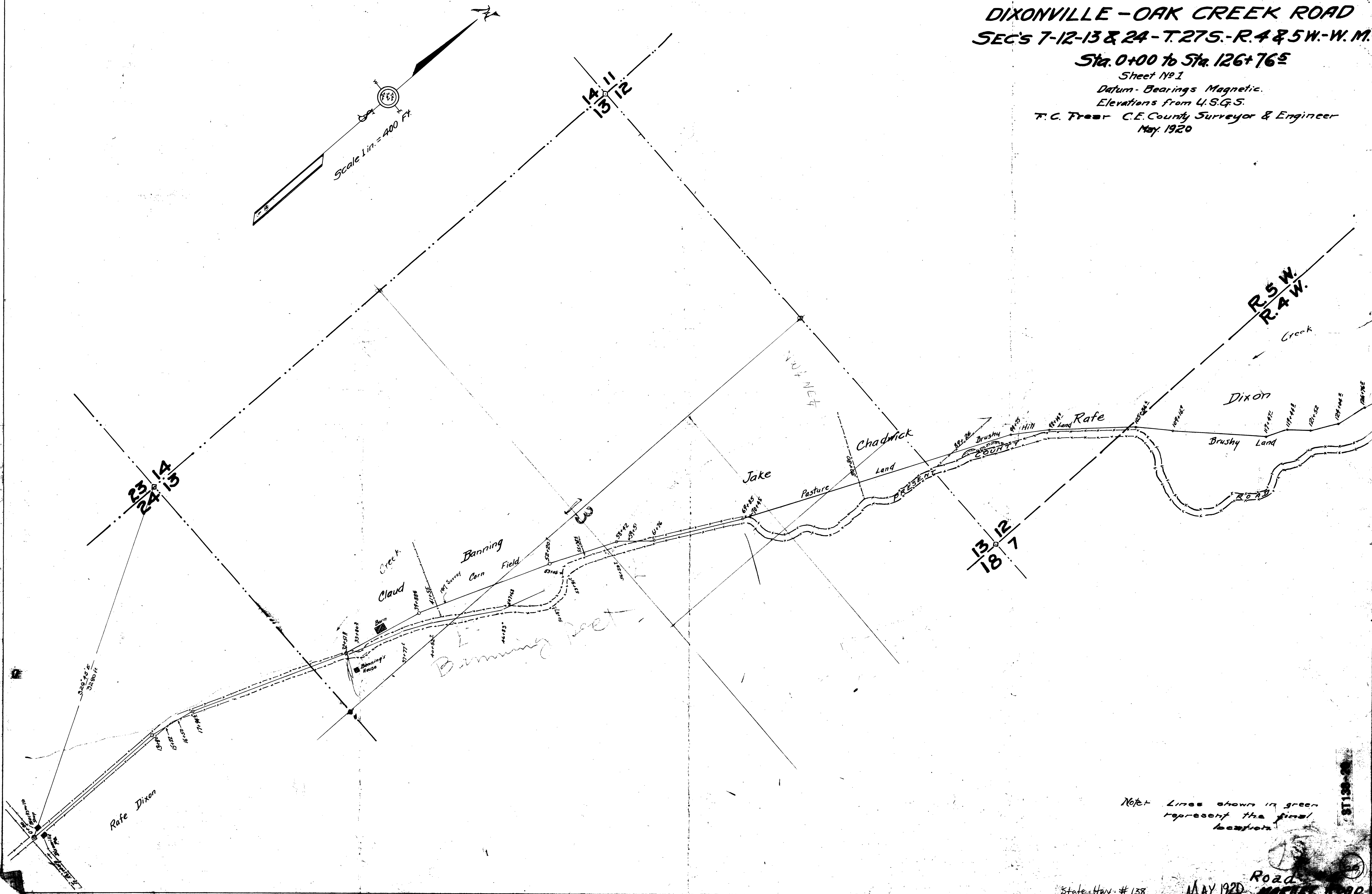
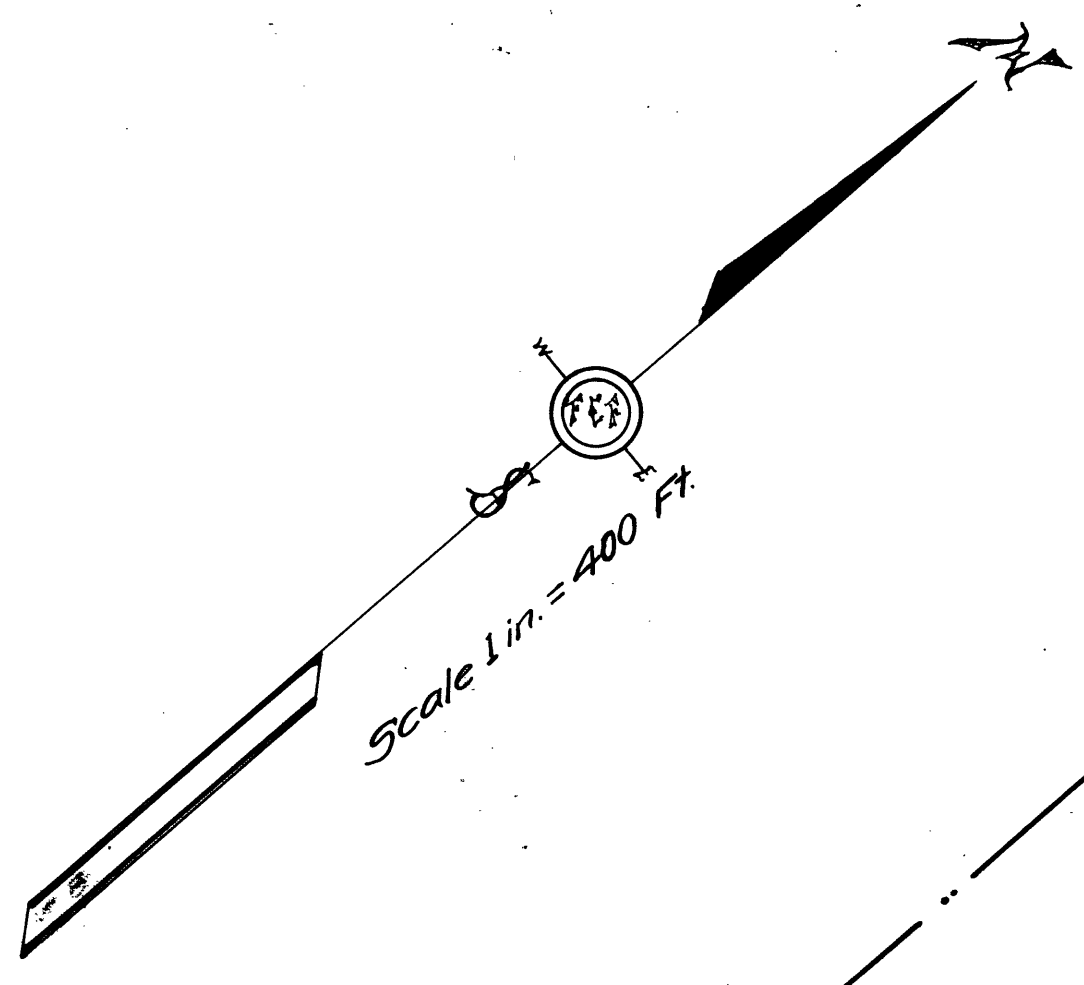


DOUGLAS COUNTY HIGHWAY SURVEY
ALIGNMENT
DIXONVILLE - OAK CREEK ROAD
SEC'S 7-12-13 & 24 - T.27S. - R.4 & 5W. - W.M.

Sta. 0+00 to Sta. 126+76.5

Sheet No 1
 Datum - Bearings Magnetic.
 Elevations from U.S.G.S.
 T.C. Frear - C.E. County Surveyor & Engineer
 May 1920



Note - Lines shown in green represent the final location.