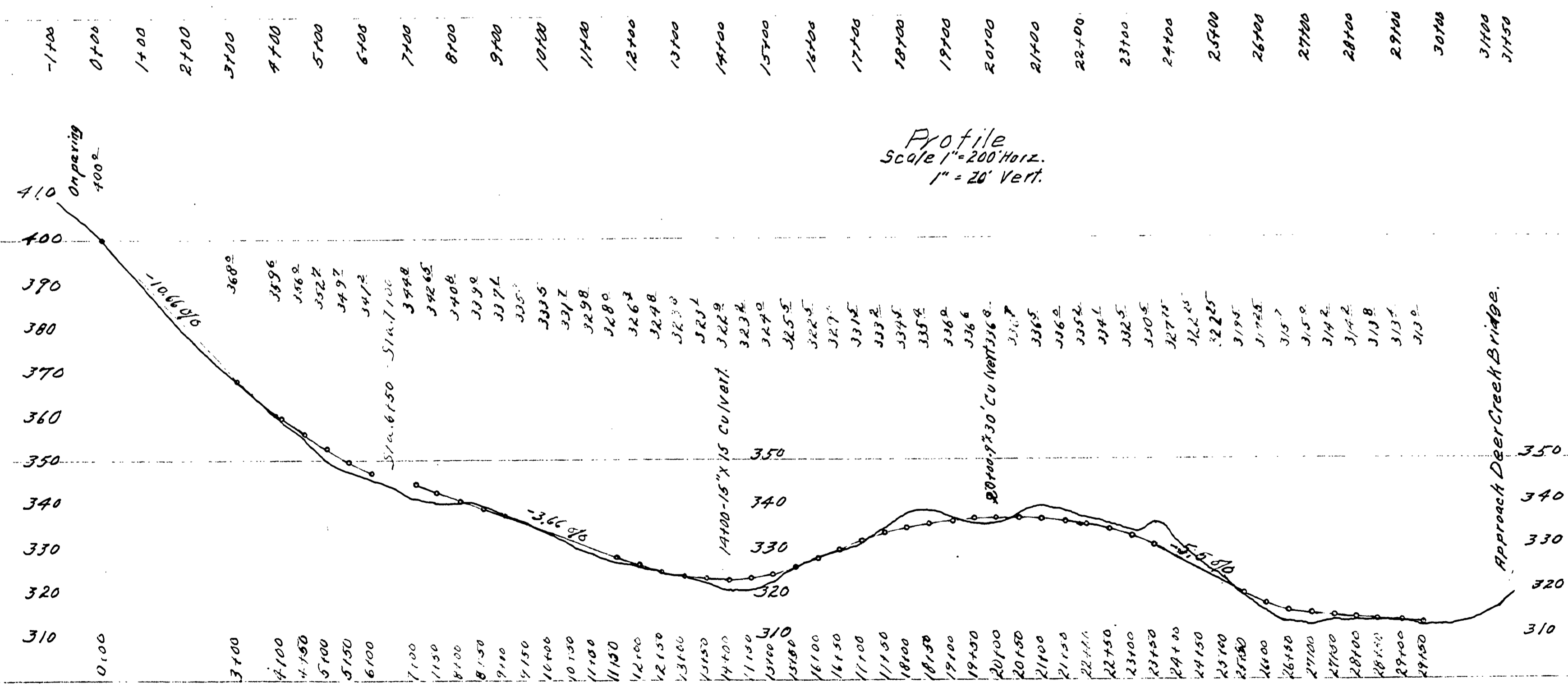
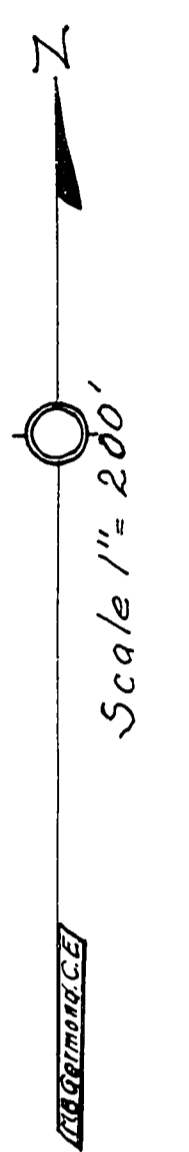


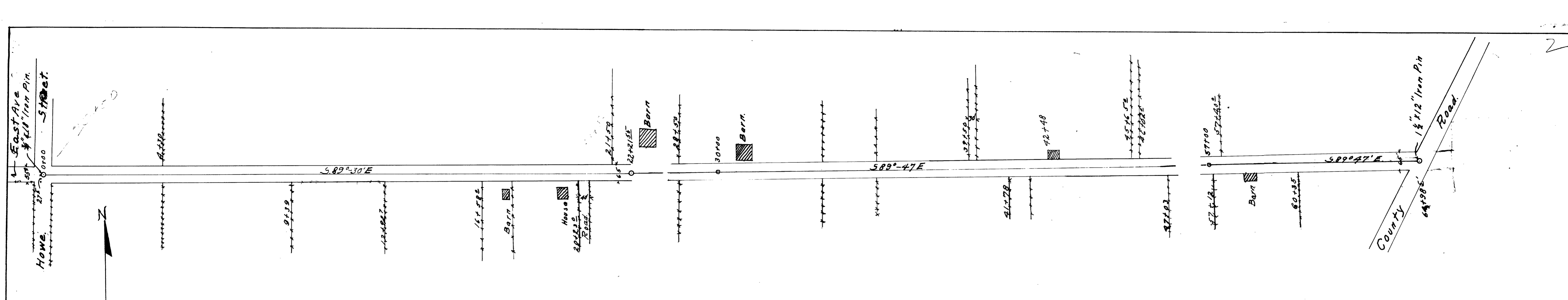
**DOUGLAS COUNTY HIGHWAY
IMPROVEMENT
PROFILE & ALIGNMENT
OF
ROSEBURG-DIXONVILLE ROAD
(EAST DOUGLAS STREET-SECTION)
SEC'S. 19 & 20. - Tps. 27 S. - R. 5. W. W. M.
Sta. 0+00 to Sta. 31+50.**

Datum, Bearing Magnetic.
Datum, Elevation Assumed.
M. B. Germond C.E. County Surv. & Roadmaster
June, 1919.

*Filed June 6 1919
M.B. Germond*



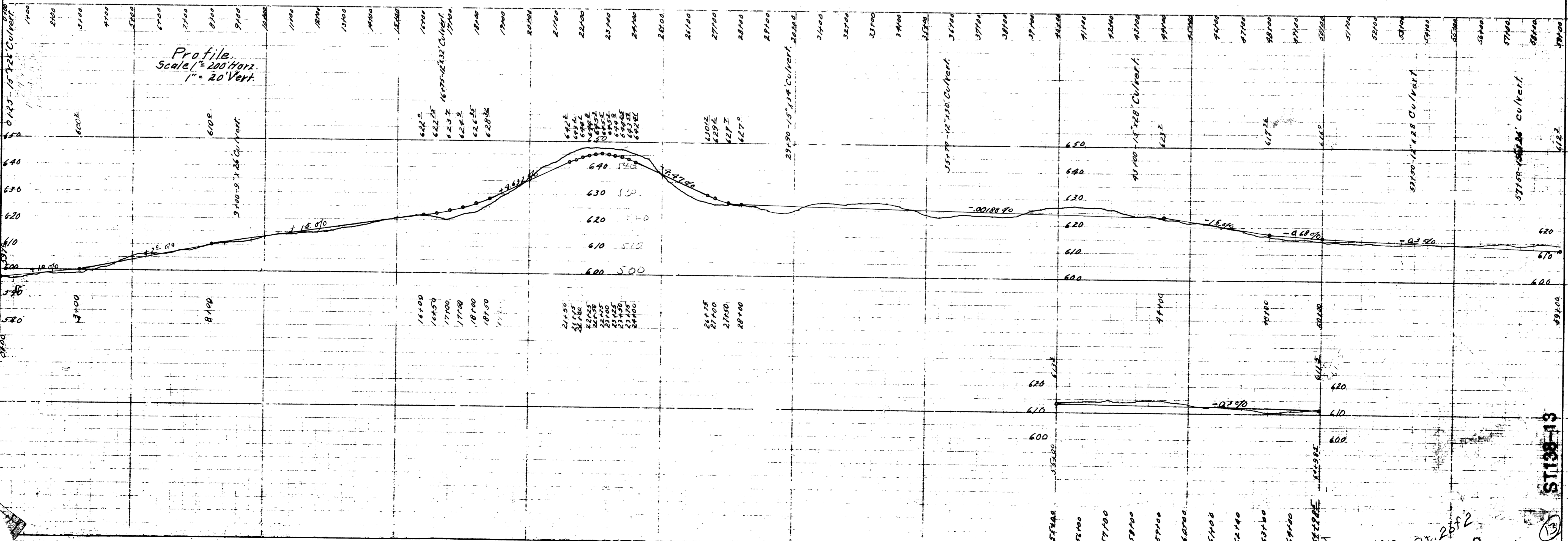
Profile
Scale 1" = 200' Horiz.
1" = 20' Vert.



DOUGLAS COUNTY HIGHWAY
IMPROVEMENT
PROFILE & ALIGNMENT
OF
ROSEBURG-DIXONVILLE ROAD
(SECTION)
SEC'S. 19. & 20. - Tps. 27S. - R. 5W.
Sta. 0+00 to Sta. 64+98.5.
 Datum, Bearing Magnetic.
 Datum, Elevation, Assumed
 M. B. Germond, C.E. County Surv. & Roadmaster.
 June 1919.

Filed June 6 1919
 E. H. Henson
 Colburn

Scale 1" = 200'



ST 138-13