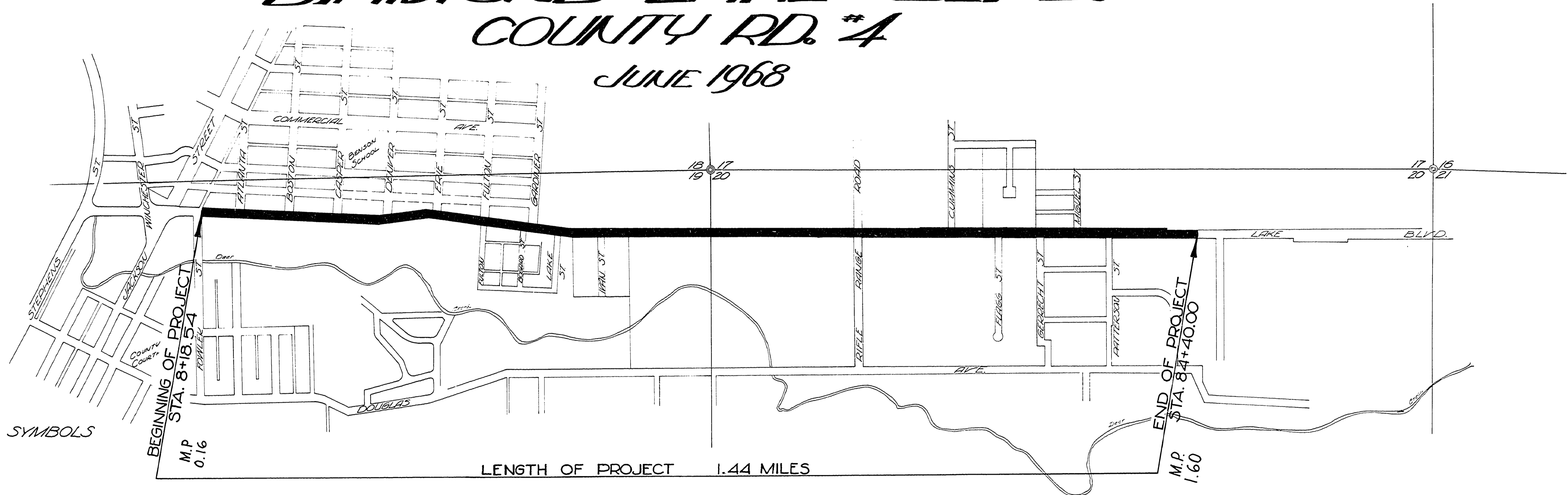


DOUGLAS COUNTY ORE PLANS FOR PROPOSED PROJ. GRADING & SURFACING DIAMOND LAKE BLVD. COUNTY RD. #4

JUNE 1968



STANDARD SYMBOLS

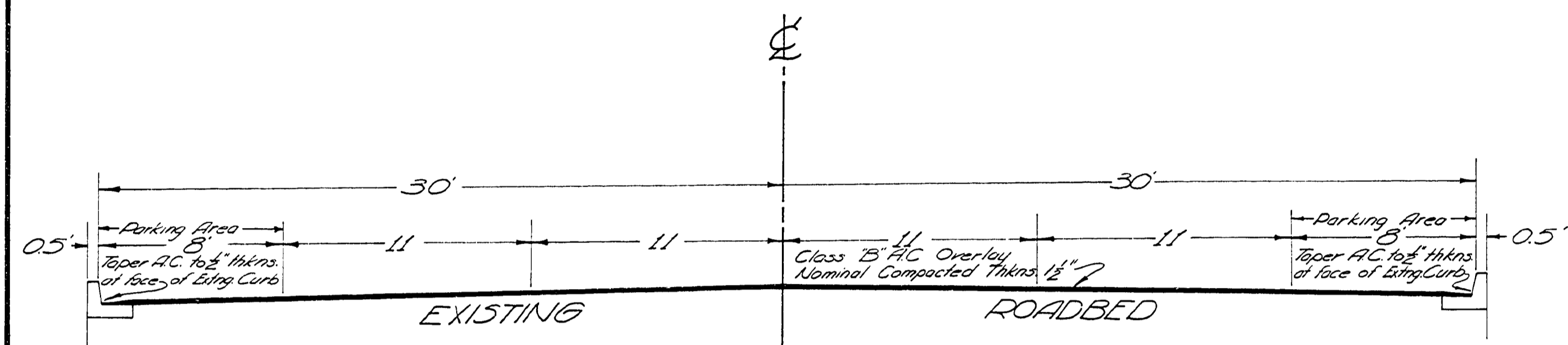
- | | | | |
|-----|----------------------------|-----|---|
| ○ | Extg. Manhole | ⋯⋯⋯ | Extg. Rd. Shoulder or Driveway |
| ⊗ | Remove Extg. Manhole | ▬▬▬ | Const. Ditch |
| ⊙ | Adjust Manhole | ⌒ | Const. Curb Radius |
| ● | Const. Manhole | ⊙ | On profile signifies const. Driveway Curb Cut. "4+60" See sheet 2 |
| □ | Extg. Catch Basin | — | Extg. R/W, width in slant lettering (45°) |
| ⊗ | Remove Extg. Catch Basin | — | New R/W, width in vertical lettering (45°) |
| ■ | Const. Catch Basin | — | Slope Easement, width in vertical lettering with asterisk (*45) |
| ■ | Const. Ditch Interceptor | | |
| ⊕ | Fire Hydrant | | |
| ○ | Water Valve | | |
| ● | Gas Valve | | |
| ⊗ | Water Meter | | |
| ⊕ | Telephone Pole | | |
| ⊕ | Power Pole | | |
| ⋯⋯⋯ | Down Guy & Anchor Rod | | |
| ⊗ | Light Pole | | |
| ⊙ | Tree (Deciduous) | | |
| ⊙ | Tree (Evergreen) | | |
| — | Fence | | |
| — | Water Line, size indicated | | |
| ⋯⋯⋯ | Existing Culvert | | |
| ▬▬▬ | Install Culvert | | |
| — | Extg. Curb Line | | |
| — | Const. Curb | | |



Douglas County Road Dept.
DIAMOND LAKE BLVD. RD.
Date June, 1968 Sheet 1 of 8
George E. Grubb County Engineer

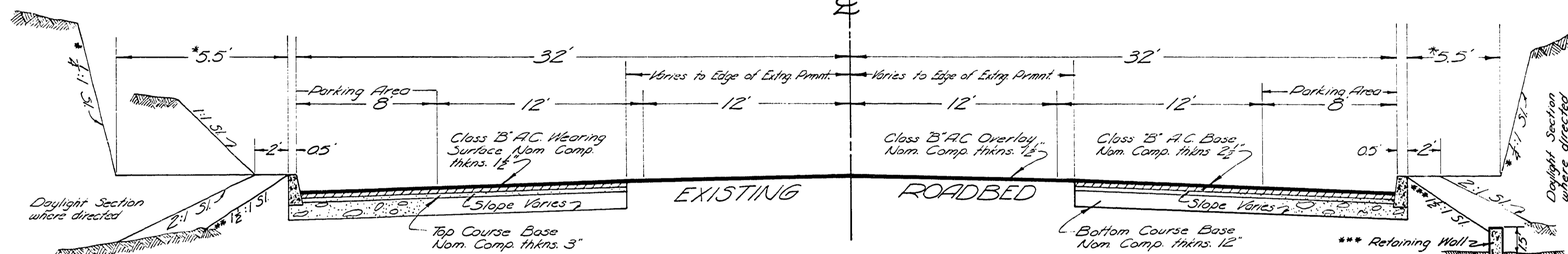
00920179

TYPICAL SECTIONS



STATION 8+18.54 TO STATION 35+10

Excavate and Reconstruct Portions of Exis. Rd as Directed by Engineer.



STATION 50+00 TO STATION 64+10

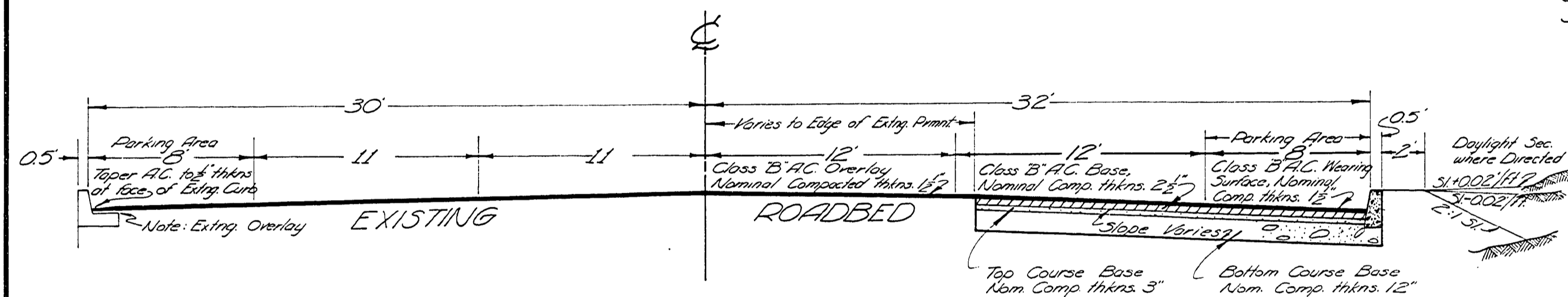
STATION 54+00 TO STATION 62+00
Widths Vary Per Rifle Range Road Intersection
Detail this Sheet

*Fallout Section Left
Sta. 75+50 - 76+00 Transition section
Sta. 76+00 - 82+00
Sta. 82+00 - 82+50 Transition Section

** 62+00 - 62+75 LT, WALTON PROPERTY
63+20 - 65+20 LT, STEUR PROPERTY
67+90 - 69+30 LT, EVANS PROPERTY

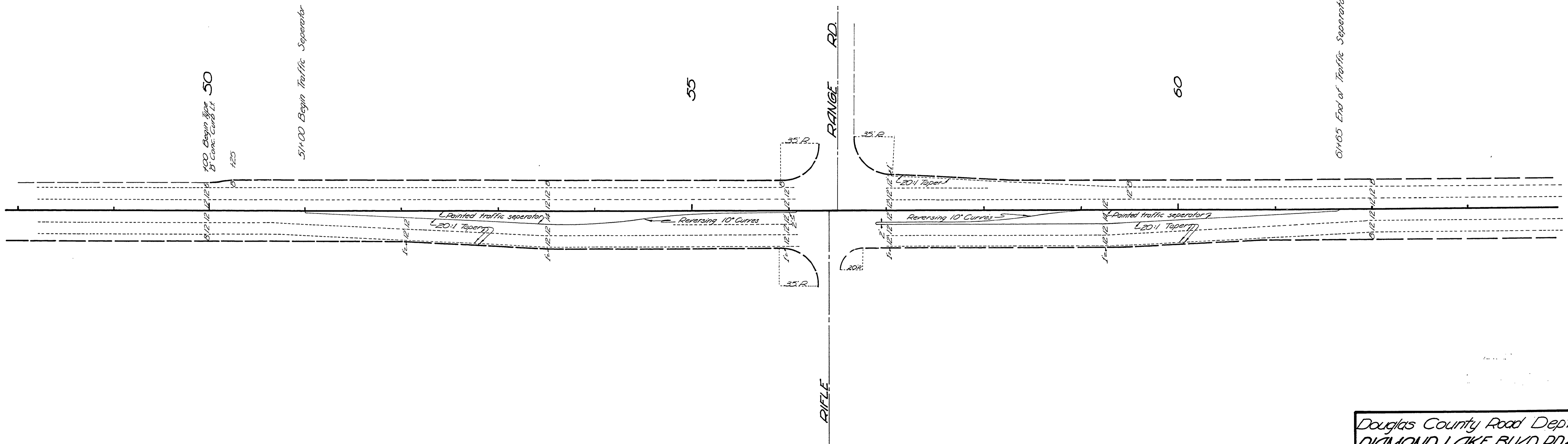
*** 73+90 - 74+50 RT, MOORE-ERWIN PROPERTY. (Reinforce retaining wall with #5 bars @ about 12' o.c. each way)

*Fallout Section Right
Sta. 77+00 to 77+50 Transition Section
Sta. 77+50 to 80+00
Sta. 80+00 to 80+50 Transition Section



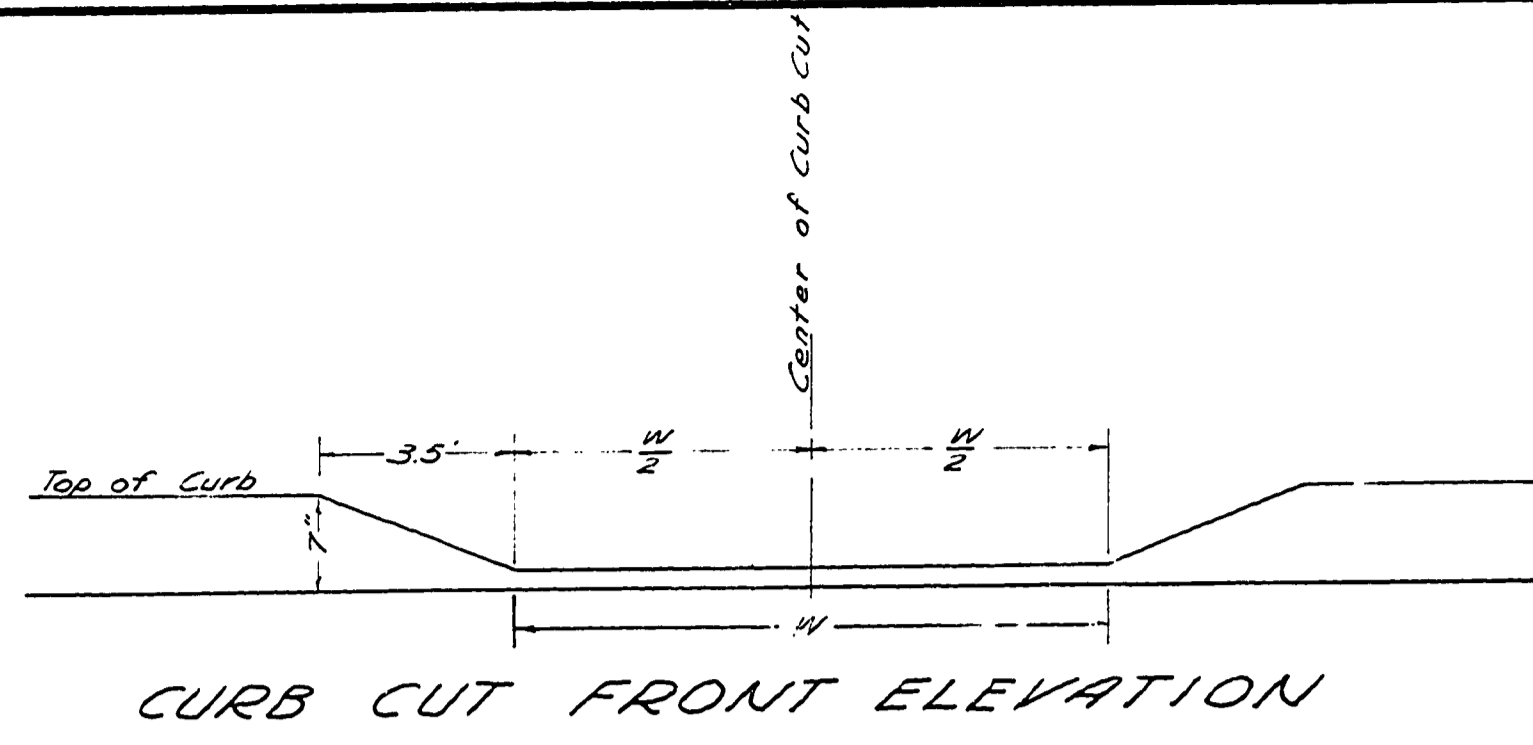
STATION 35+10 TO STATION 50+00

NOTE: All Curbs to be standard type 'B' with 7 exposure.

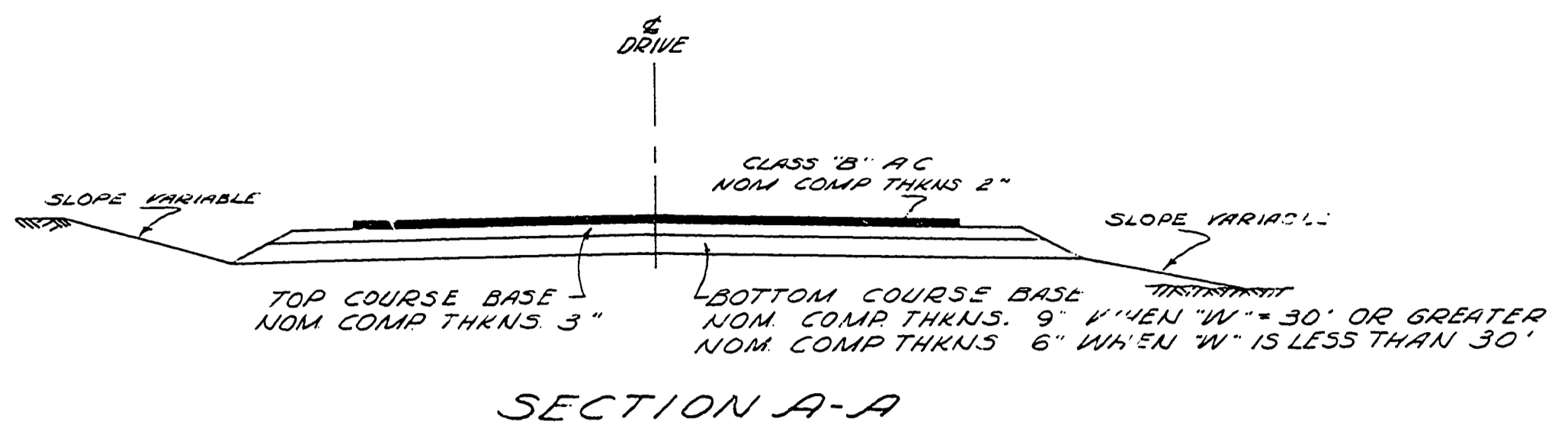


Douglas County Road Dept.
DIAMOND LAKE BLVD. RD. 4
Date - June, 1968 Sheet 2 of 8
GEORGE E. GRUBB County Engineer

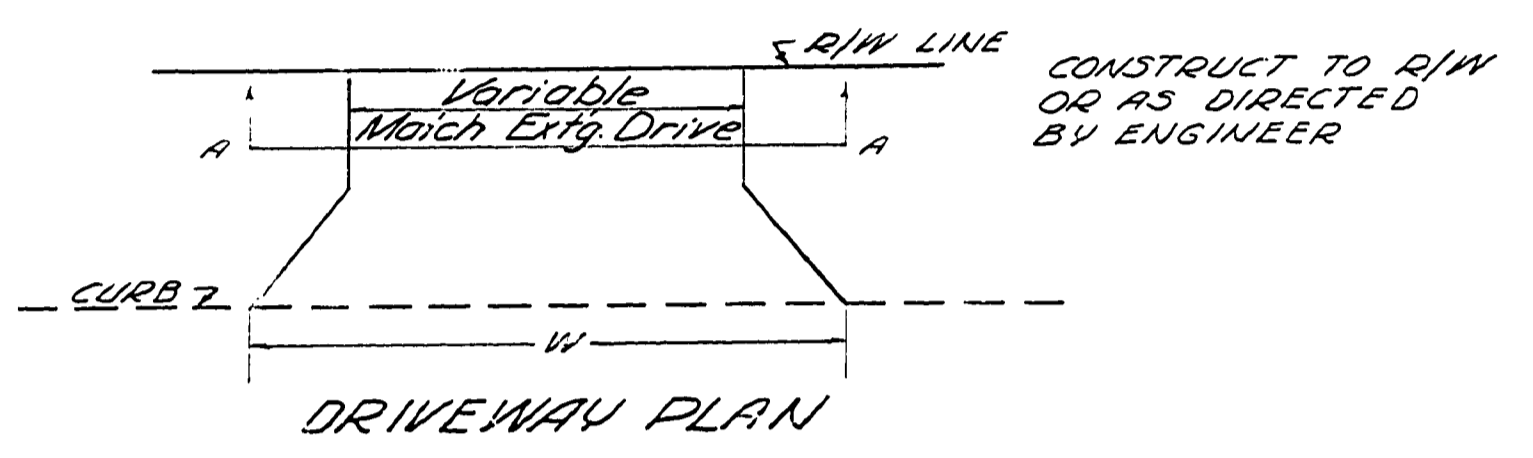
00920104



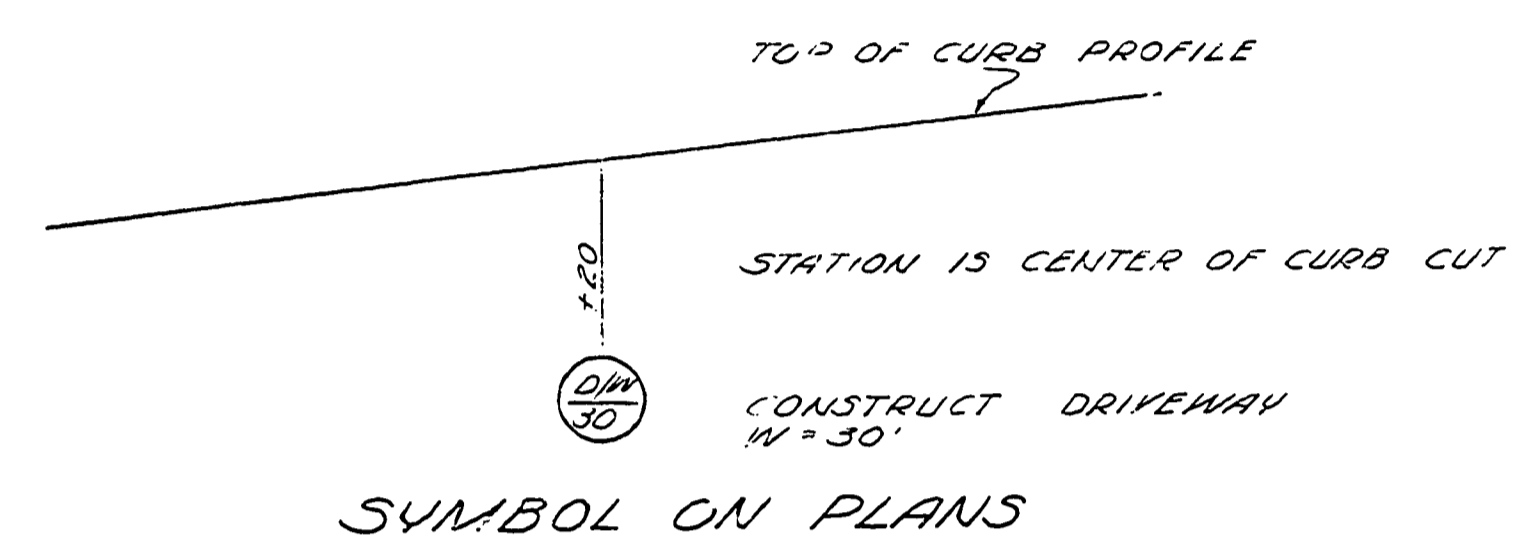
CURB CUT FRONT ELEVATION



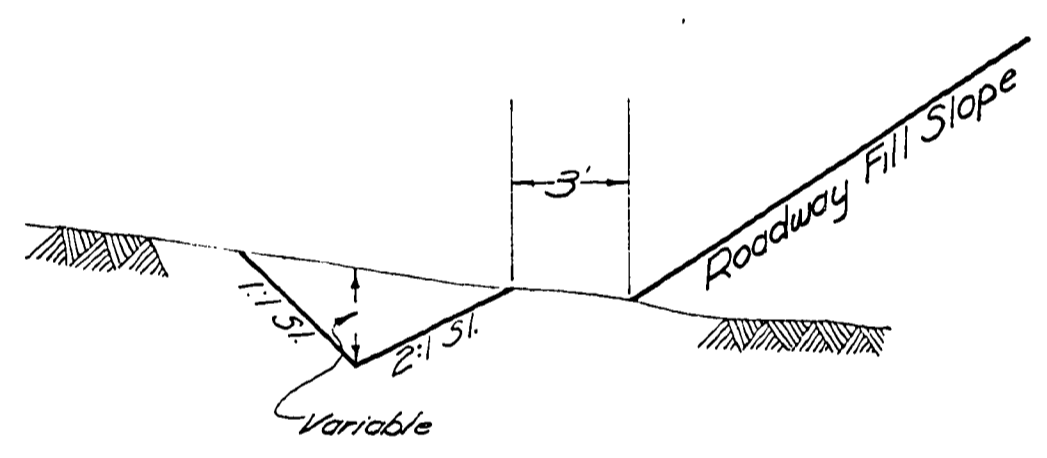
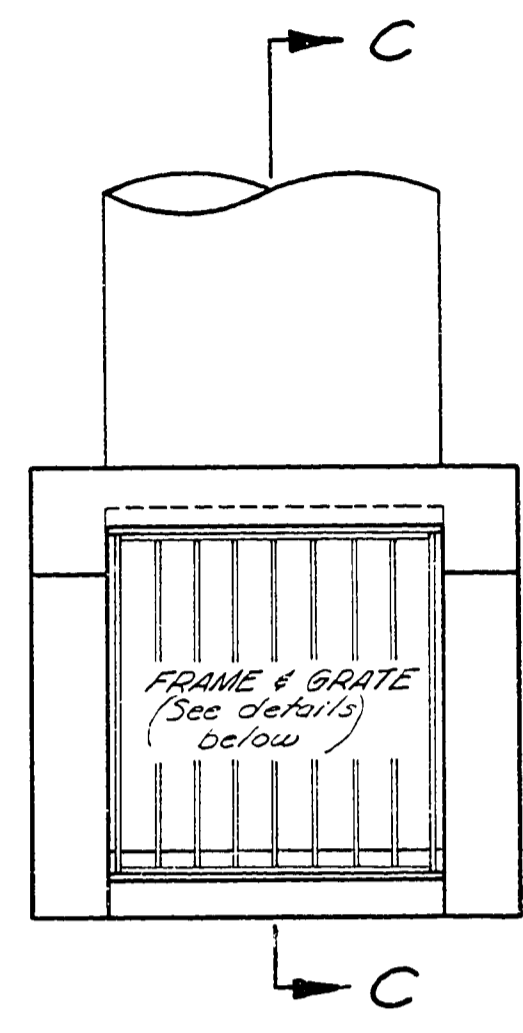
SECTION A-A



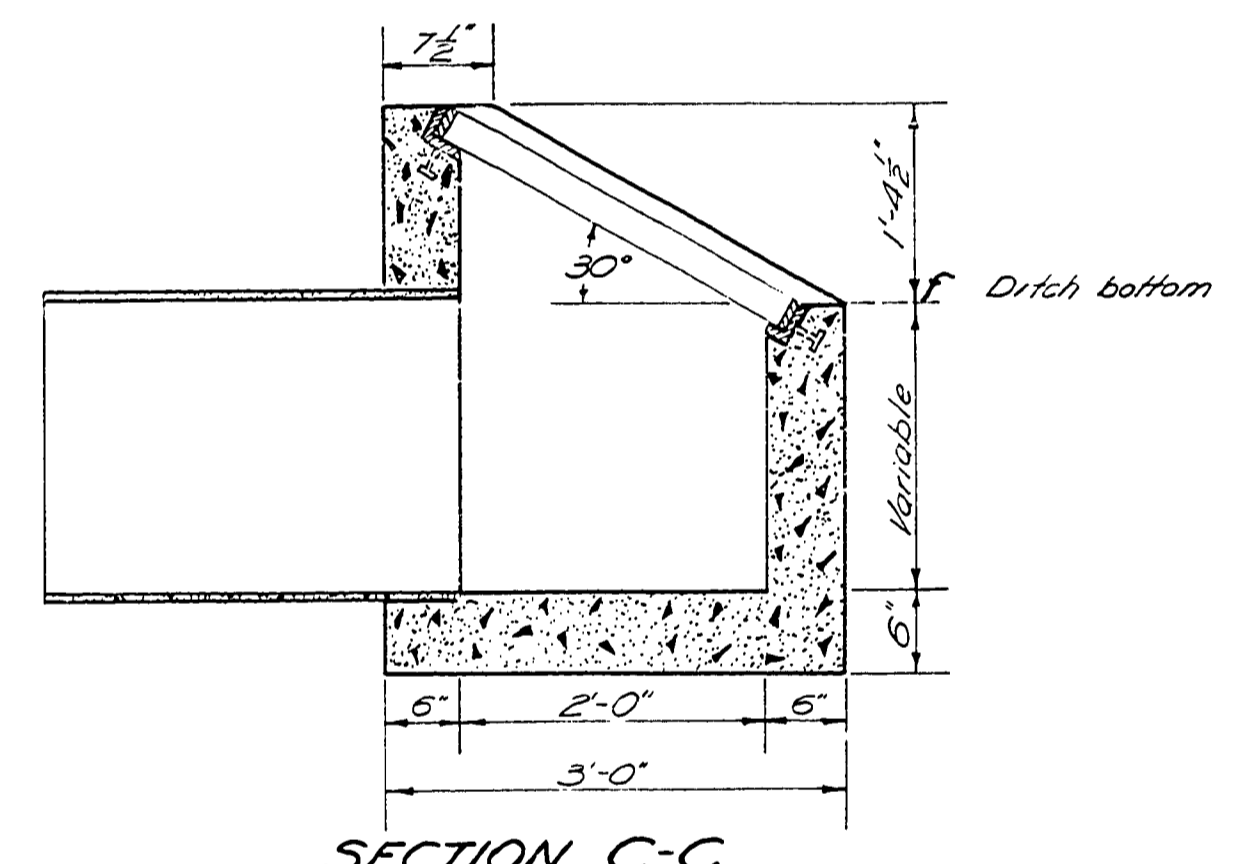
DRIVEWAY PLAN



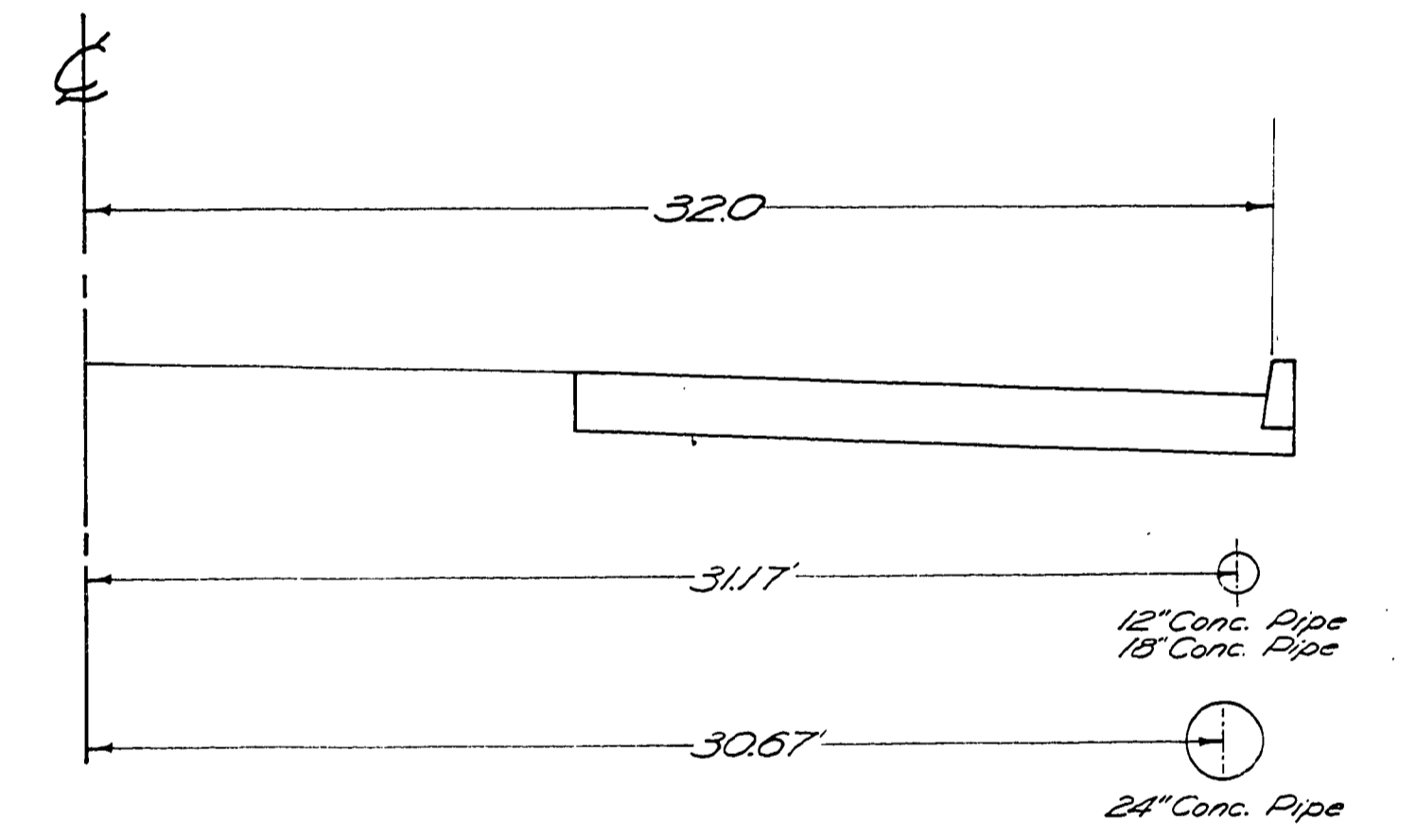
SYMBOL ON PLANS



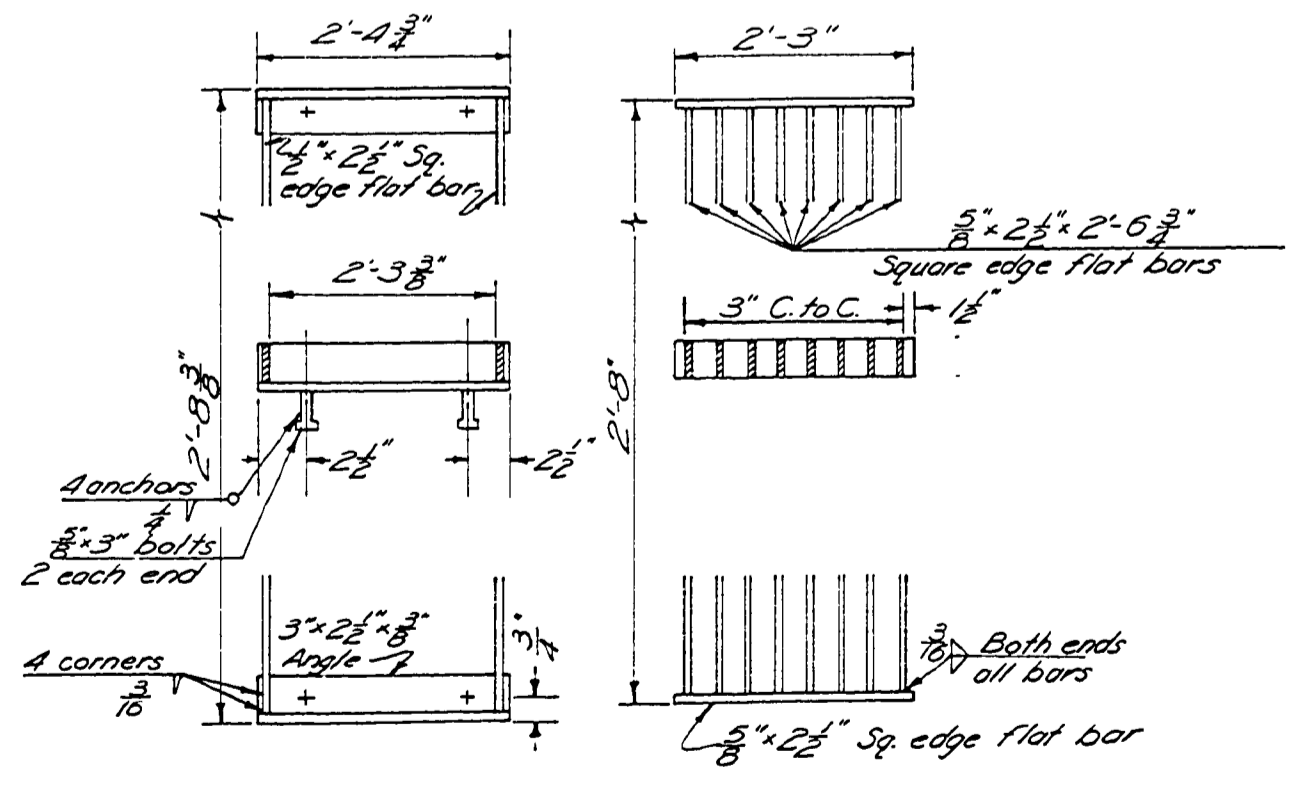
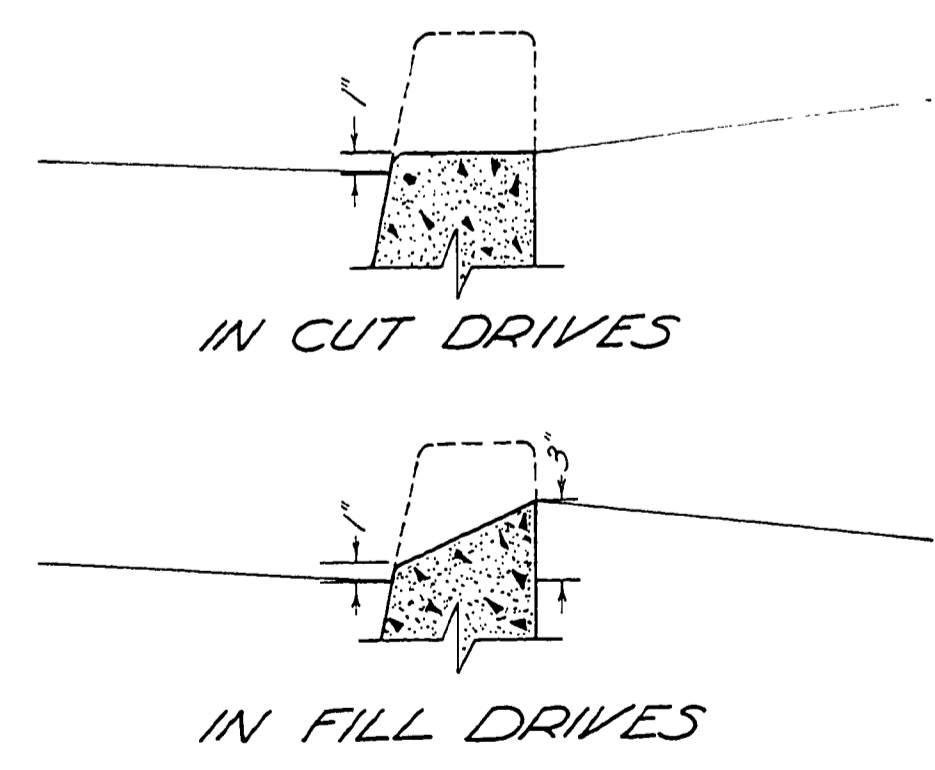
TYPICAL DITCH SECTION
 DITCH EXCAVATION
 STA. 60+70 - 62+75 L.T.
 STA. 63+25 - 65+50 L.T.
 STA. 68+00 - 69+00 L.T.
 STA. 70+75 - 72+25 L.T.
 STA. 73+15 - 74+50 L.T.
 STA. 82+75 - 83+90 L.T.



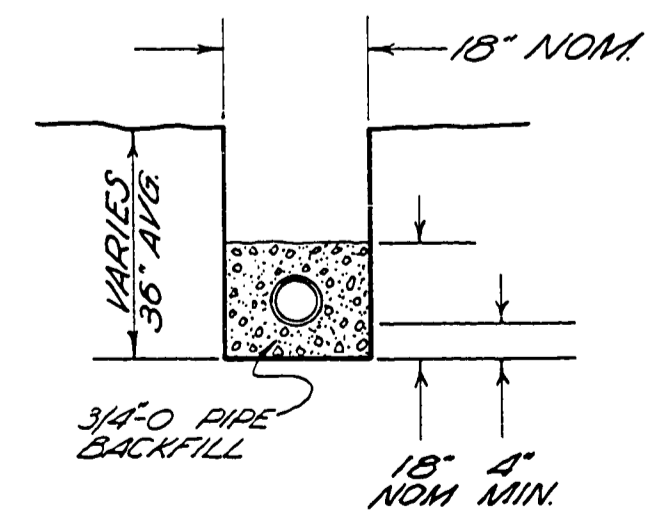
SECTION C-C
 DITCH INTERCEPTOR CATCH BASIN



TYPICAL SECTION
 STORM SEWER DESIGN RT. SIDE



DETAILS FOR FRAME & GRATE

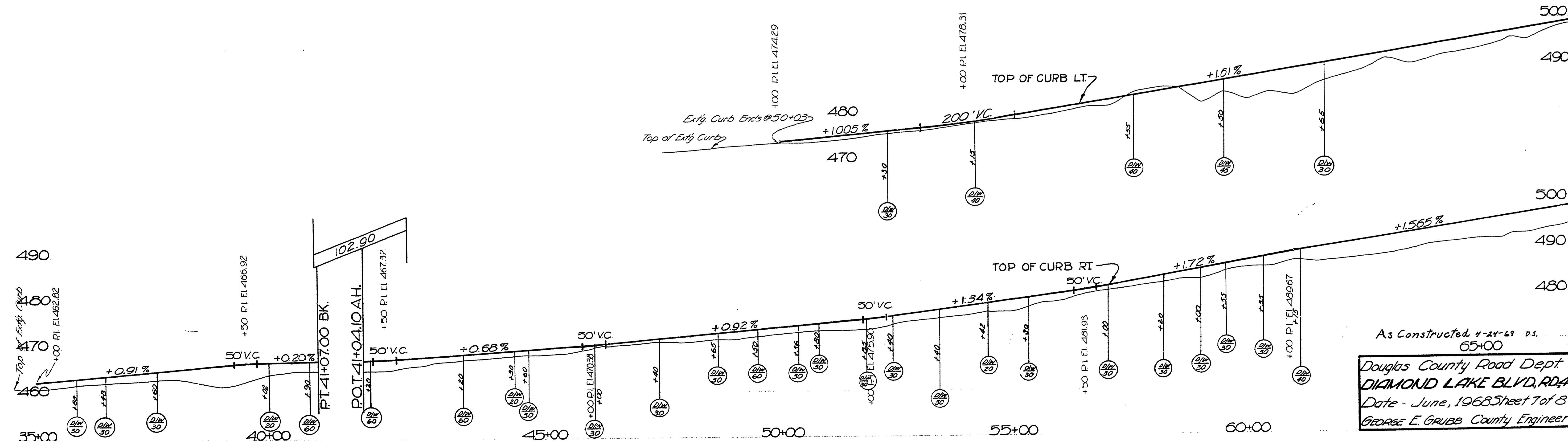
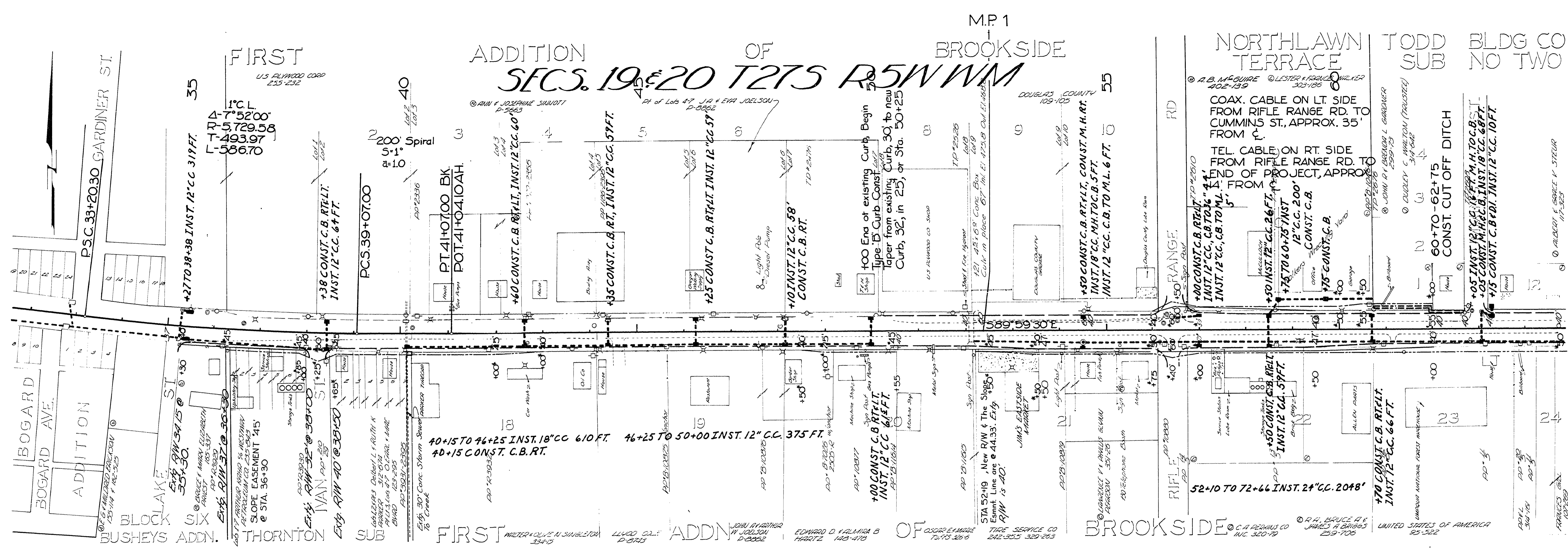


WATER MAIN TRENCH DETAIL
 75+00 - 84+40 RT.
 WATER MAIN INSTALLATION BY OTHERS

Douglas County Road Dept.
 DIAMOND LAKE BLVD. RD. 4
 Date: June, 1968 Sheet 3 of 8
 GEORGE E. GRUBB County Engineer

00160179

RD # 4



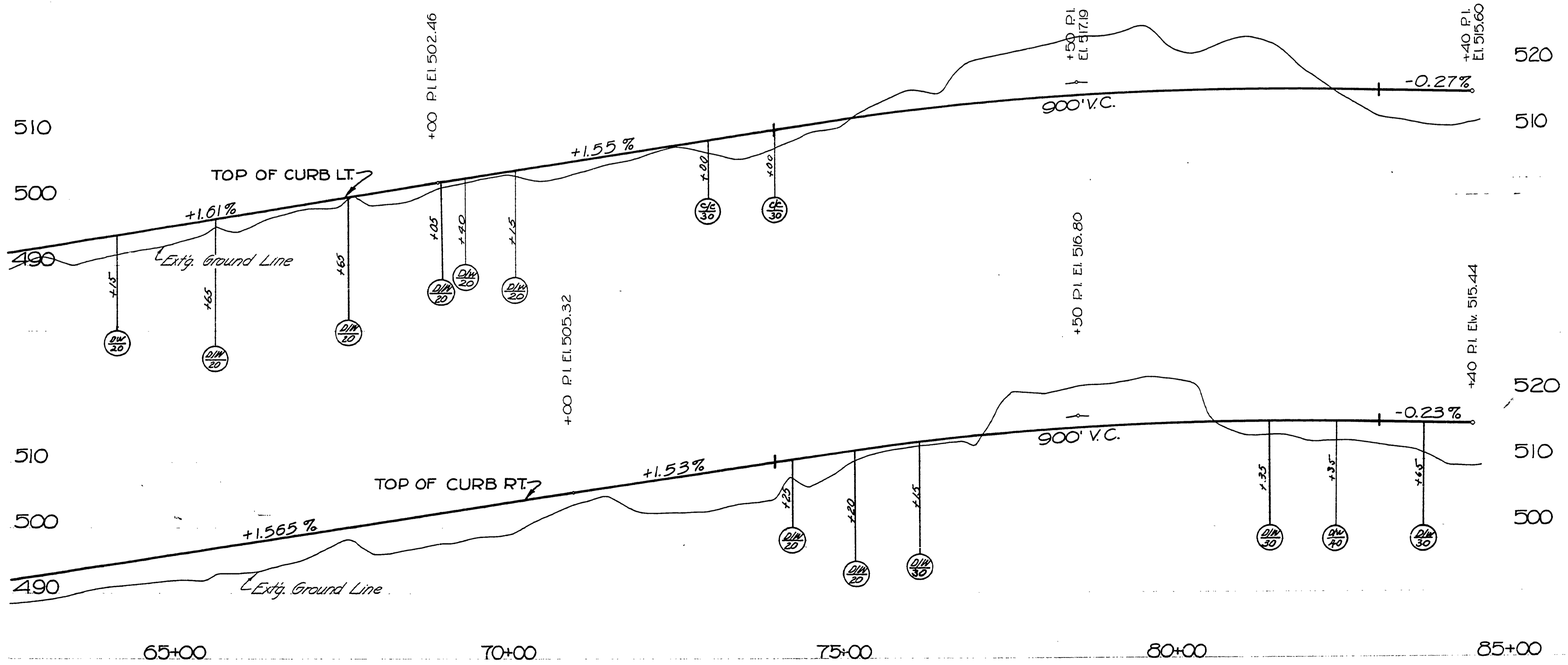
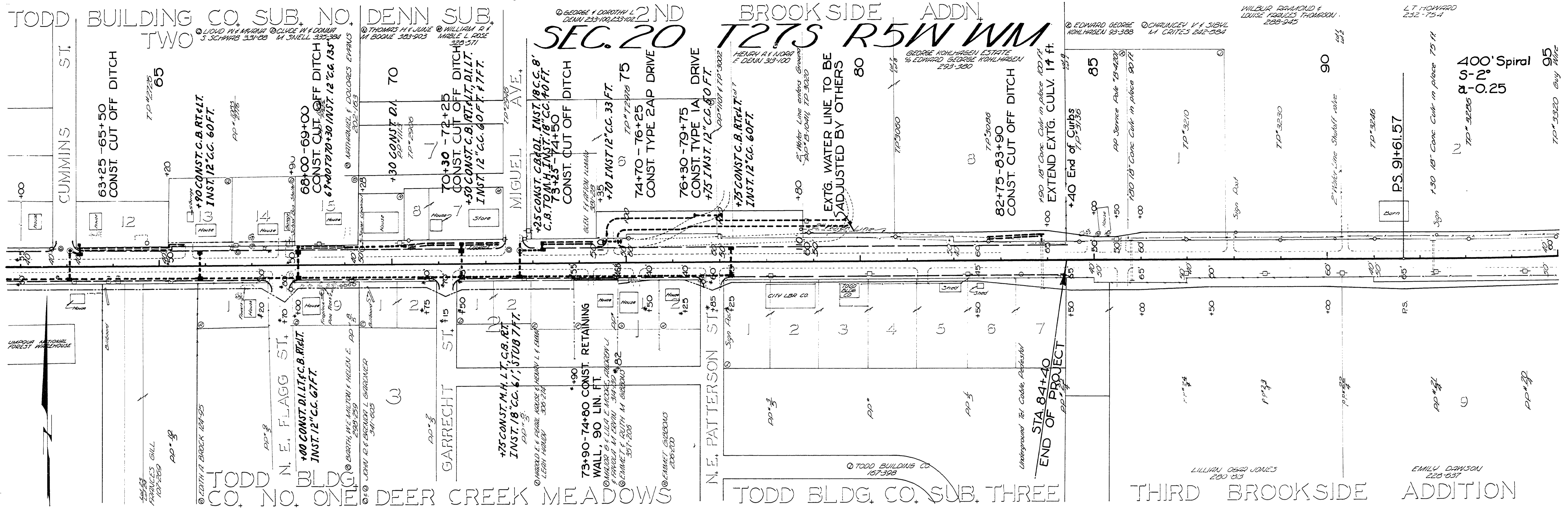
As Constructed 4-24-69 DS.
65+00
Douglas County Road Dept
DIAMOND LAKE BLVD. RDA
Date - June, 1968 Sheet 7 of 8
GEORGE E. GRUBB County Engineer

M.P. 0.67-1.20

Rid # 4

June 1968 Sht. 7 of 8

3



As Constructed 4-28-69 as
 Douglas County Road Dept.
DIAMOND LAKE BLVD., RD. 4
 Date - June, 1968 Sheet 8 of 8
 George E. Grubb County Engineer