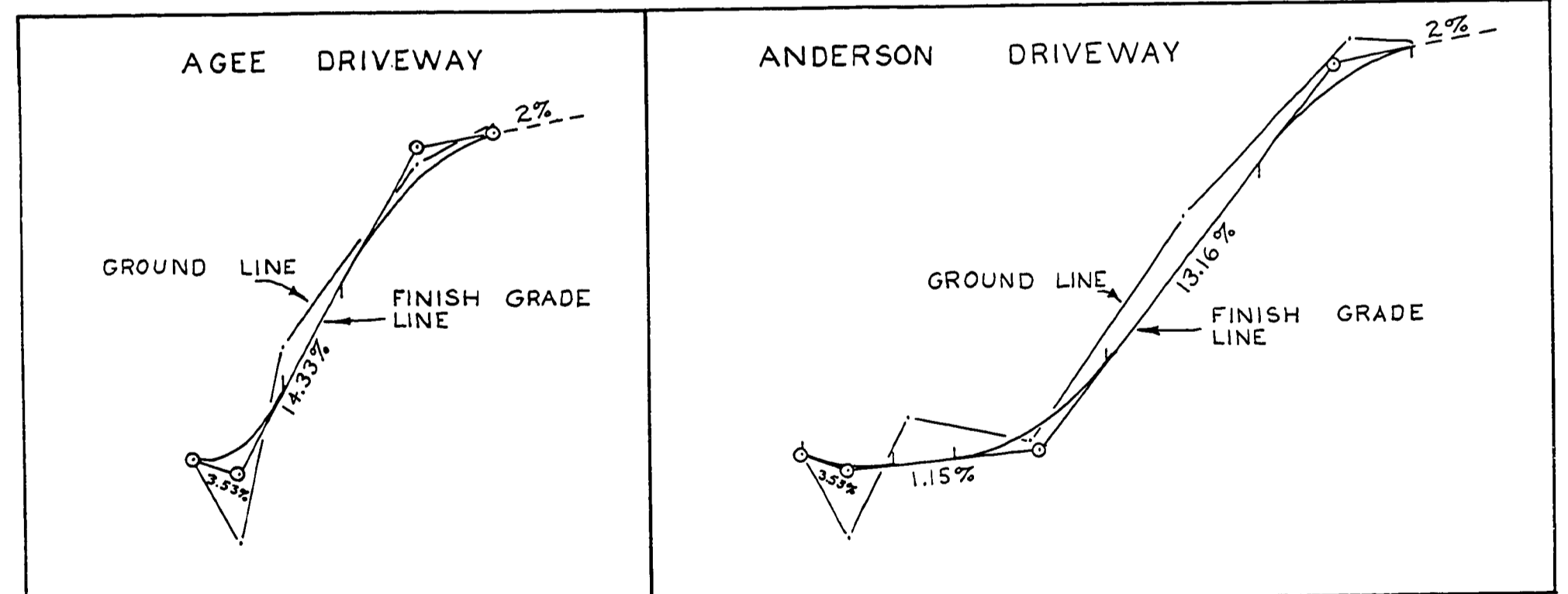
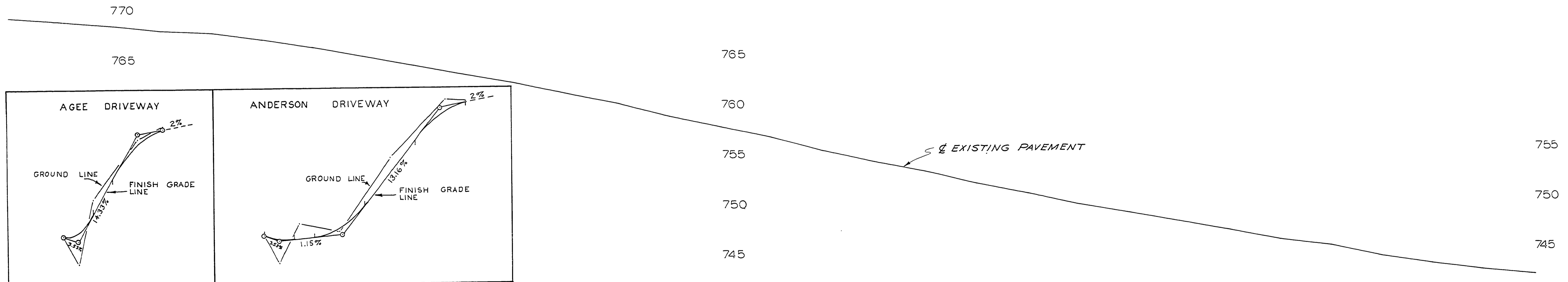
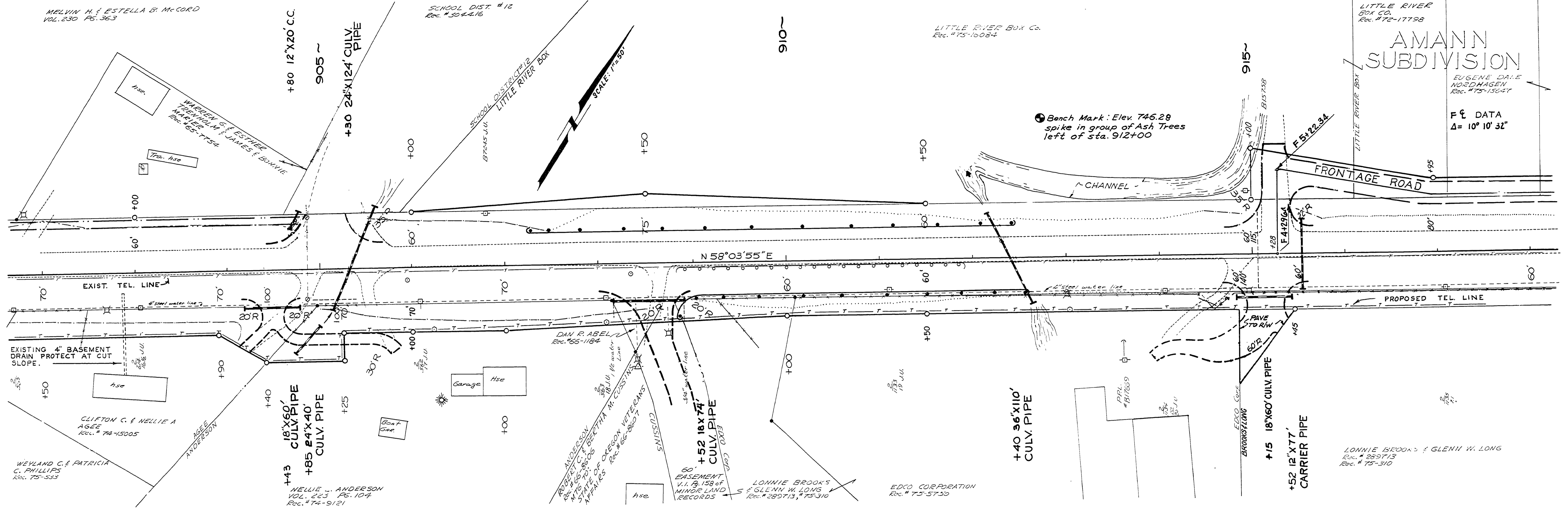


SEC.17 T 26 S R 3W W.M.



905+00

910+00

915+00

M.P. 17.30 - 17.57

DOUGLAS COUNTY
PUBLIC WORKS DEPARTMENT
NORTH UMPQUA HWY. ROAD 4
1977 SHT. 12
GEORGE E. GRUBB, DIRECTOR

1977
RD # 4
Sht. 12 of 14
105

17301757