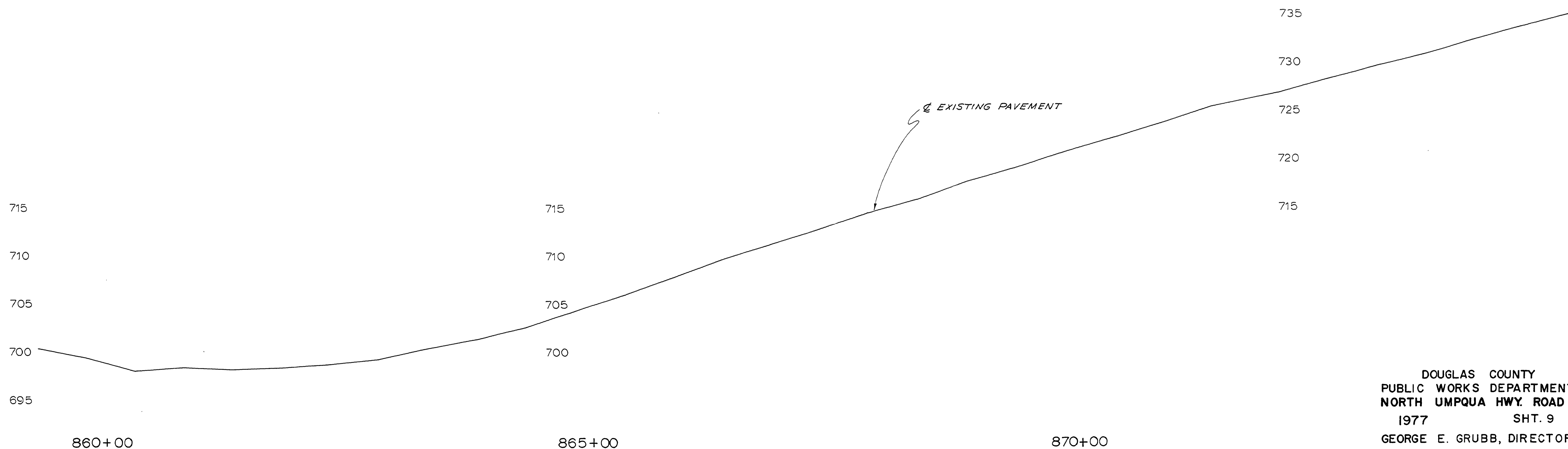
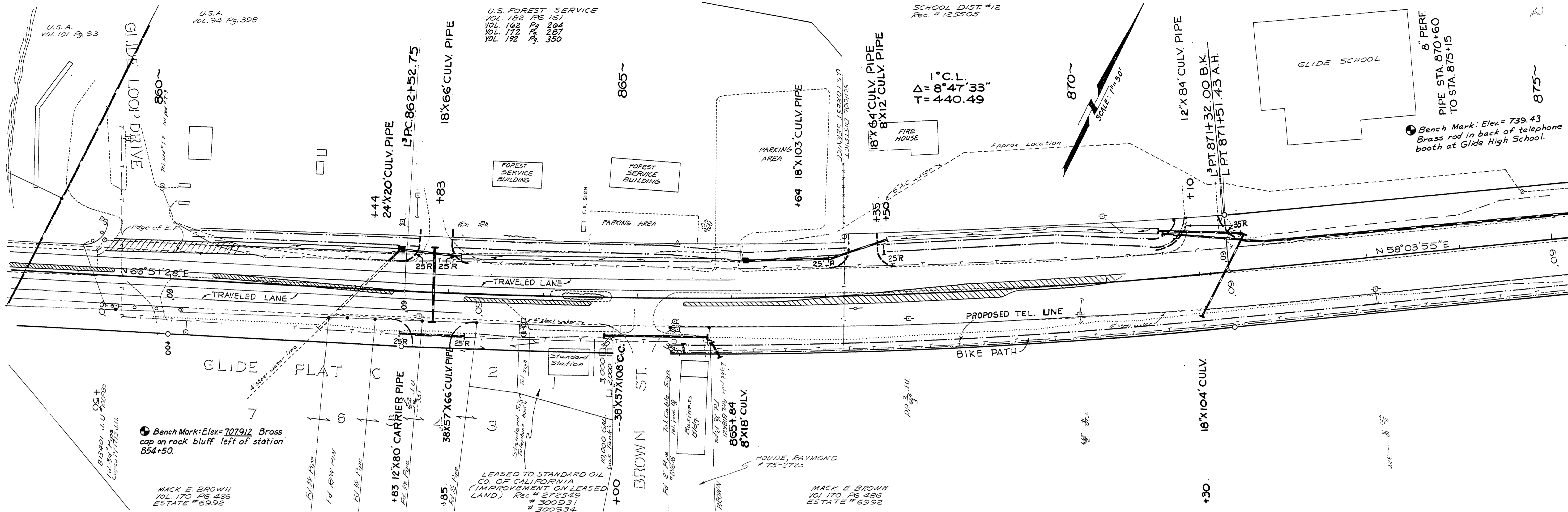


SEC. 19 T26 S3W W.M.



M.P. 16.47-16.75

DOUGLAS COUNTY
PUBLIC WORKS DEPARTMENT
NORTH UMPQUA HWY. ROAD 4
1977 SHT. 9
GEORGE E. GRUBB, DIRECTOR

1977
Rd. # 4 Sht. 9 of 14

16471675

105