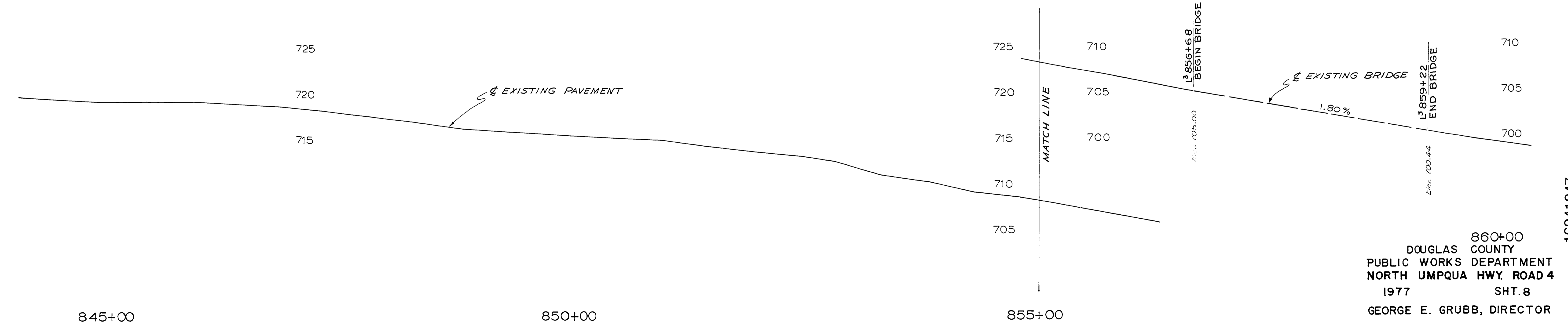
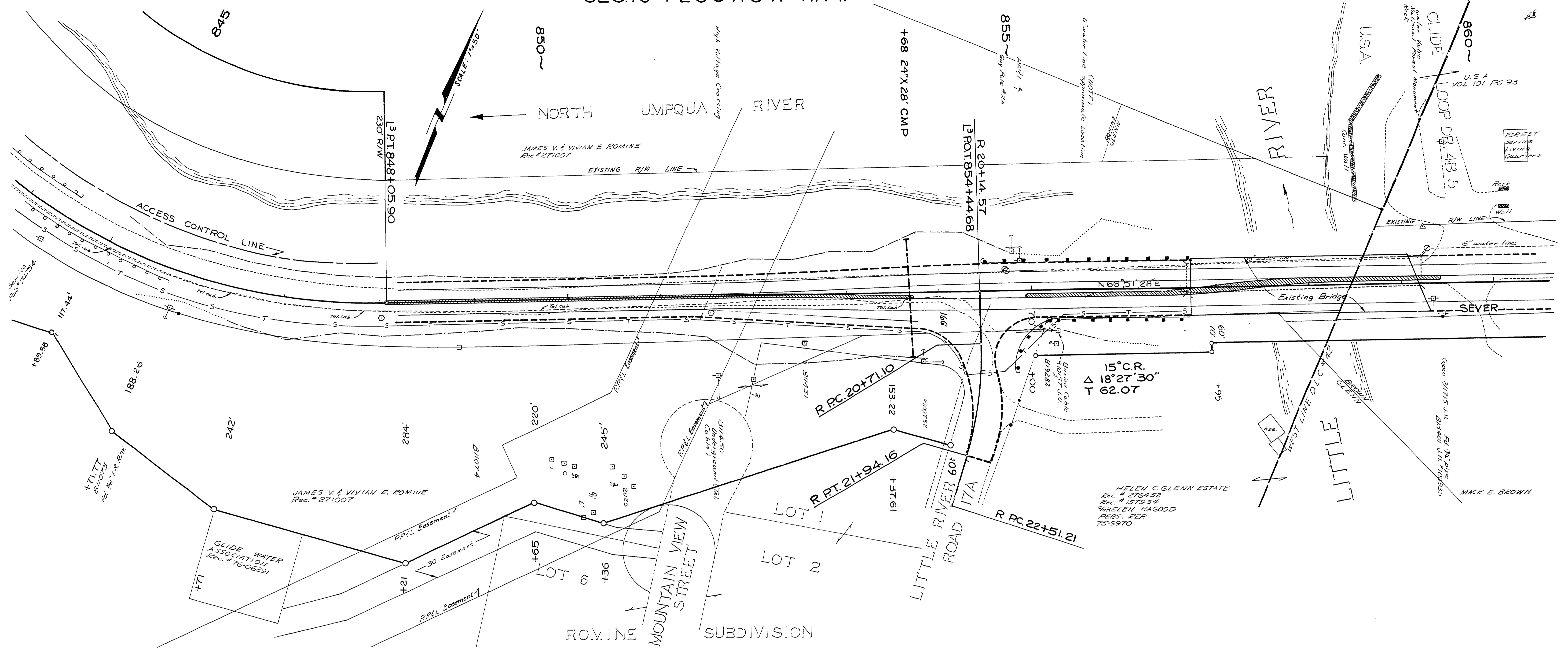


SEC.19 T 26 S R 3 W W.M.



845+00

850+00

855+00

860+00
 DOUGLAS COUNTY
 PUBLIC WORKS DEPARTMENT
 NORTH UMPQUA HWY. ROAD 4
 1977 SHT. 8
 GEORGE E. GRUBB, DIRECTOR

M.P. 16.24 - 16.47

1977
 Rd #4
 Sht. 8 of 14

16241647

