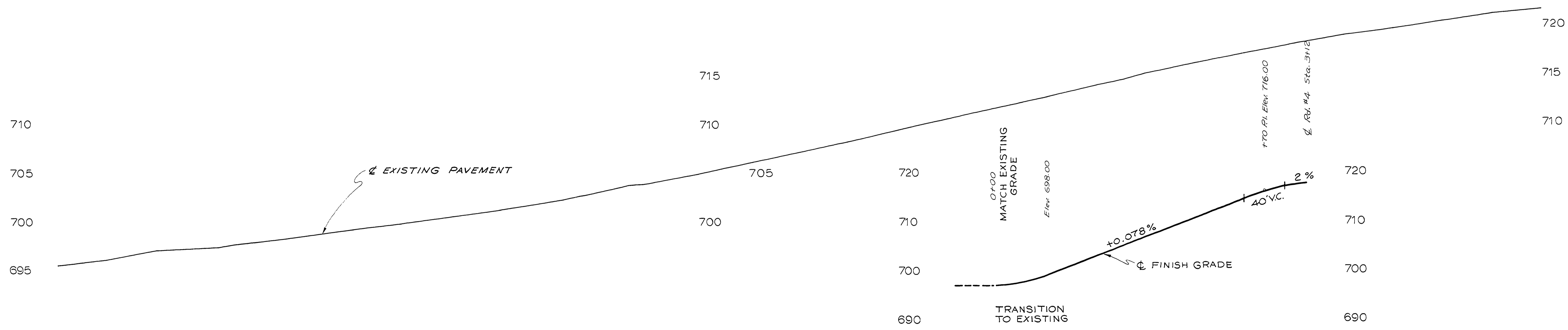
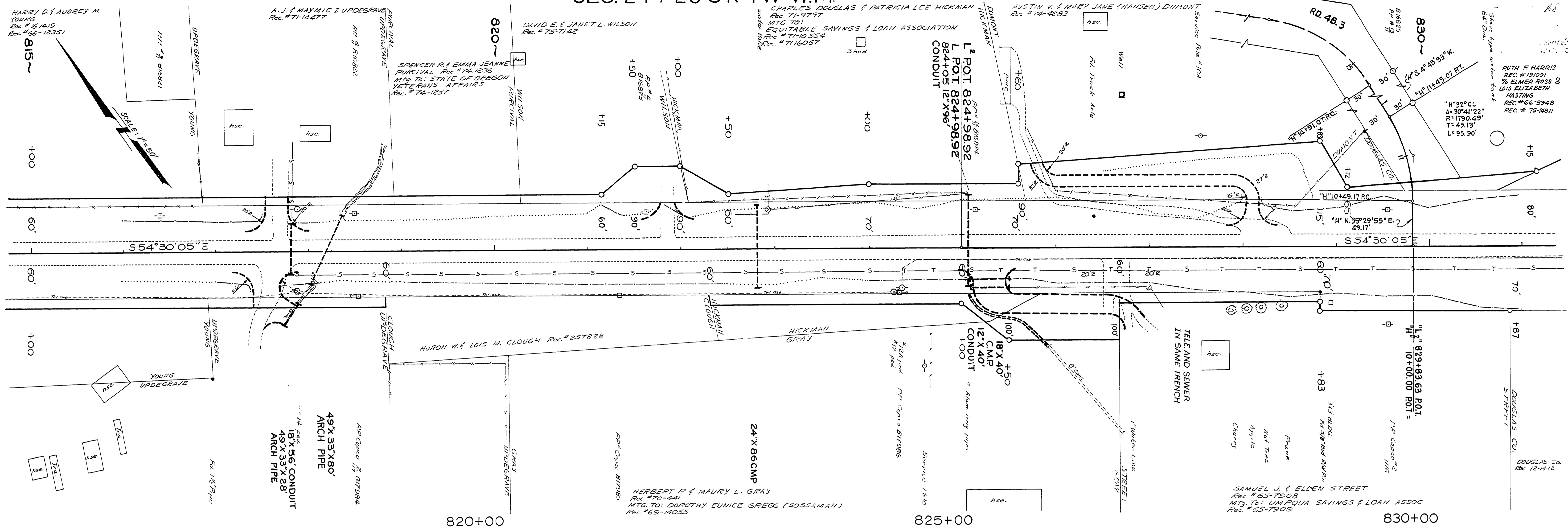


SEC. 24 T 26 S R 4 W W.M.



DRIVEWAY PROFILE

DOUGLAS COUNTY
 PUBLIC WORKS DEPARTMENT
 NORTH UMPQUA HWY. ROAD 4
 1977
 GEORGE E. GRUBB, DIRECTOR

M.P. 15.25 - 15.92

Rd. # 4

1977
 Sht. 6 of 14

15651592

102