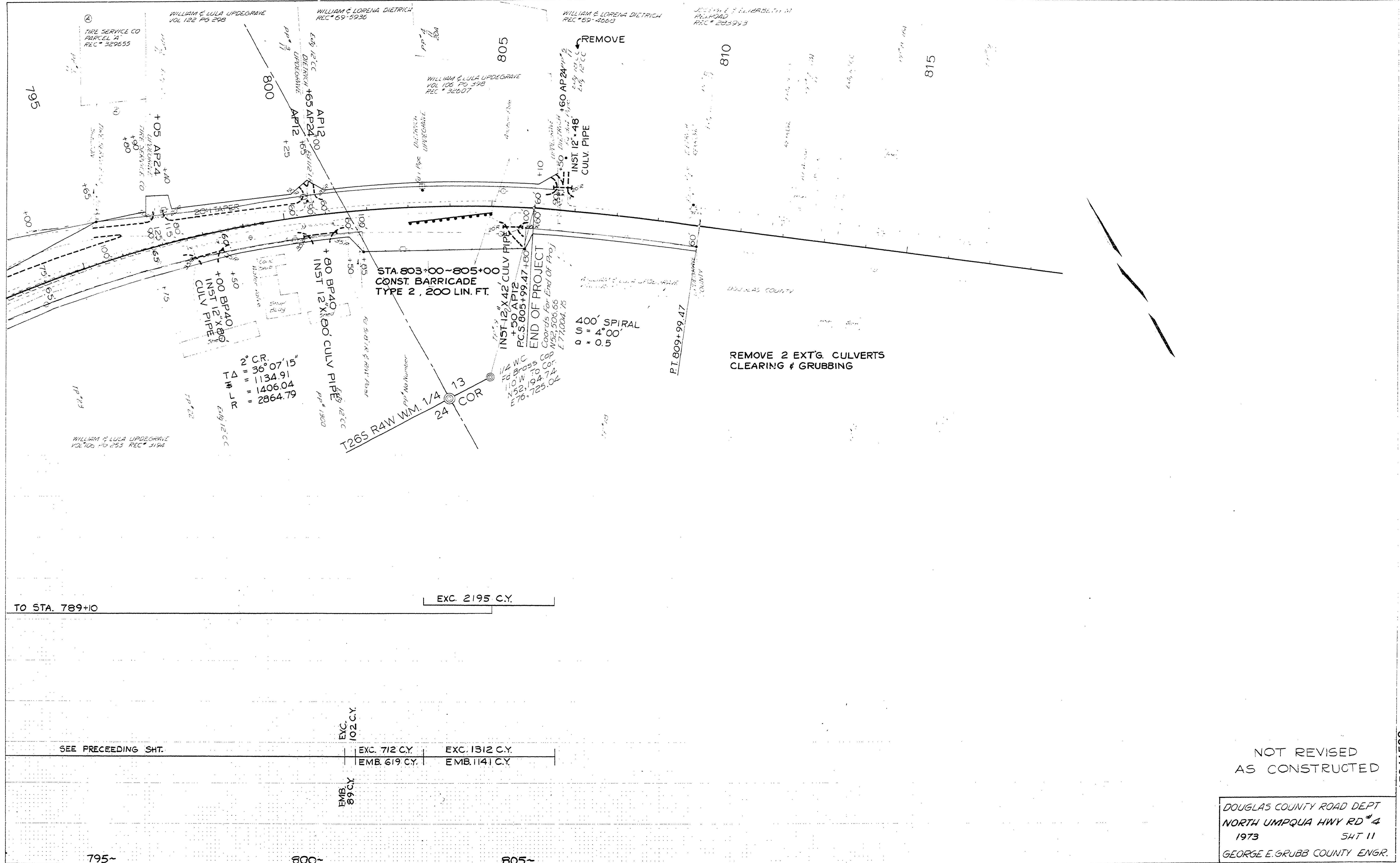


PLAN	NO.
SURVEYED, ALIGNED, CHECKED, BY DATE	
NOTE BOOK NO.	

PROFILE	NO.
SURVEYED, GRADES CHECKED, BY DATE	
NOTE BOOK NO.	



TO STA. 789+10

EXC. 2195 C.Y.

SEE PRECEDING SHT.	EXC. 712 C.Y.	EXC. 1312 C.Y.
	EMB. 619 C.Y.	EMB. 1141 C.Y.
EMB. 89 C.Y.		

NOT REVISED
AS CONSTRUCTED

DOUGLAS COUNTY ROAD DEPT
NORTH UMPQUA HWY RD #4
1973 SHT 11
GEORGE E. GRUBB COUNTY ENGR.

15341562