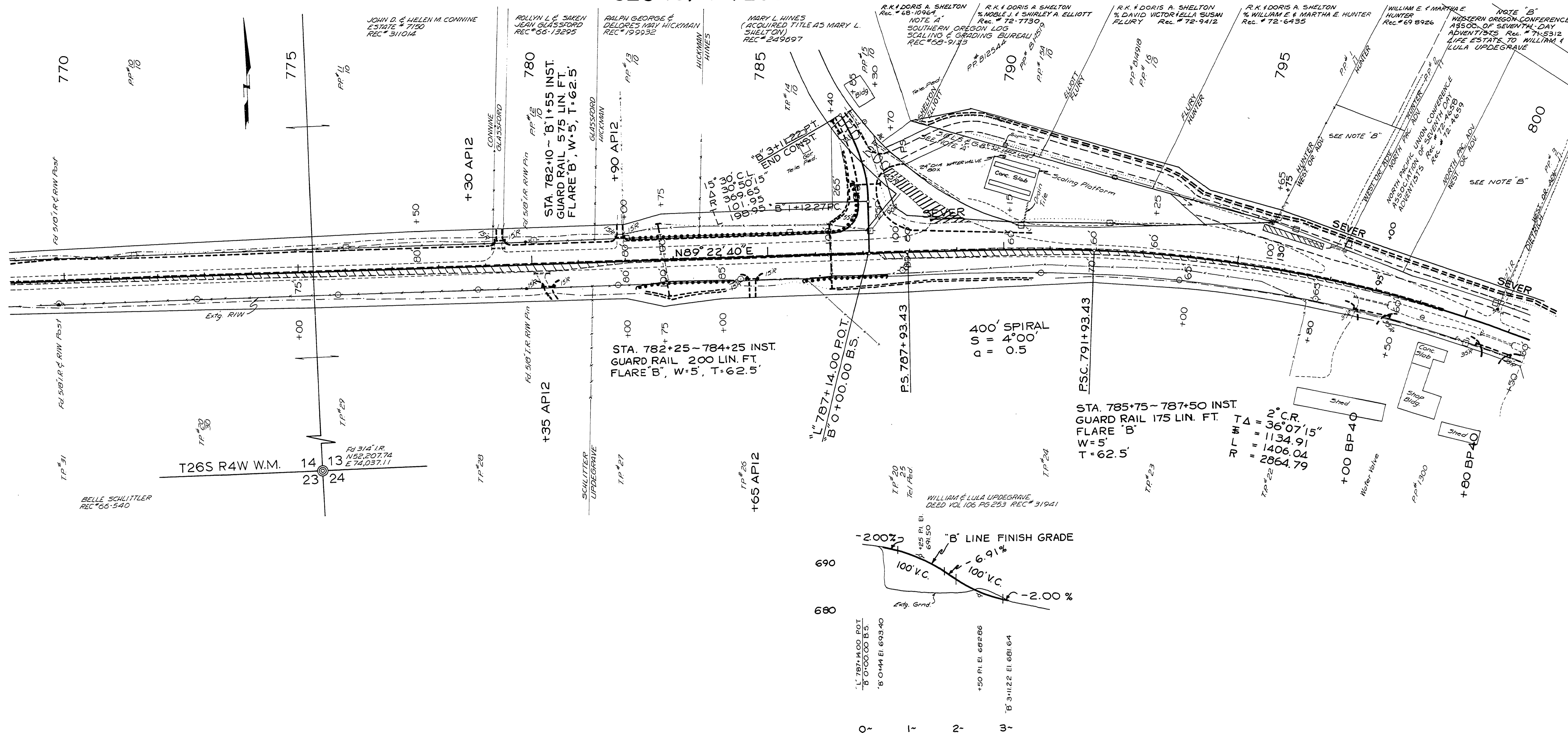


SEC 13,14 T26S R4W W.M.

MP15

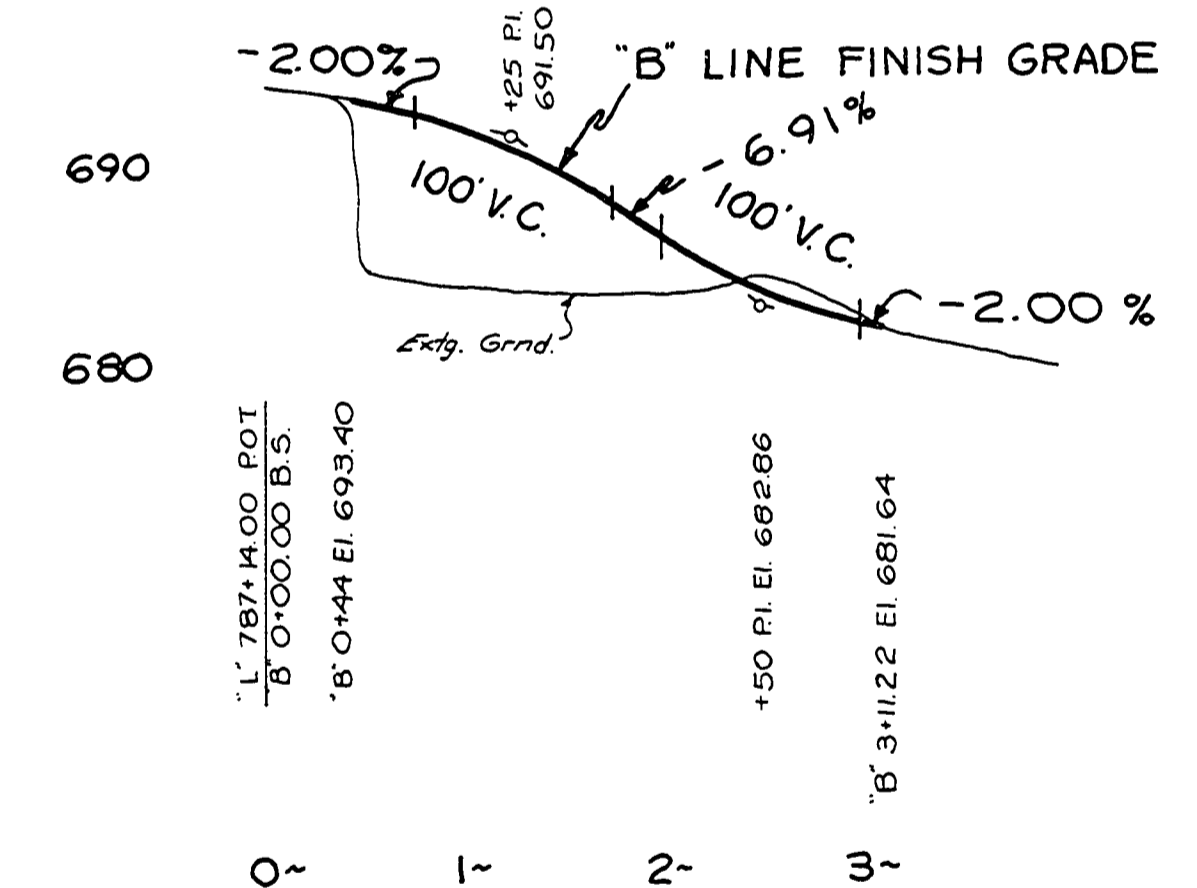
RD 4



400' SPIRAL
 $S = 4^{\circ}00'$
 $\Delta = 0.5$

STA. 785+75-787+50 INST.
 GUARD RAIL 175 LIN. FT.
 FLARE 'B'
 W=5'
 T=62.5'

$\Delta = 2^{\circ}C.R.$
 $R \Delta = 36^{\circ}07'15''$
 $R L M = 1134.91$
 $R L W = 1406.04$
 $R L T = 2864.79$



NOT REVISION
 AS CONSTRUCTED

DOUGLAS COUNTY ROAD DEPT
 NORTH UMPQUA HWY RD # 4
 1973 SHT 9
 GEORGE E. GRUBB COUNTY ENGR.

14751534