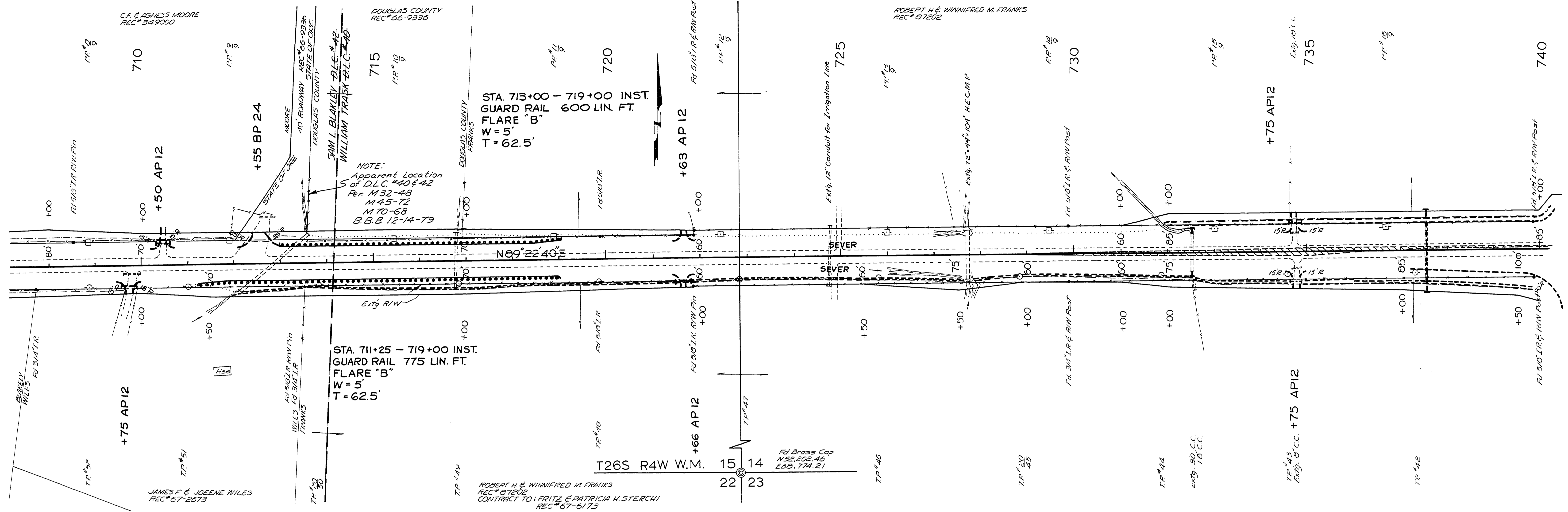


SEC 14.15 T26S R4W W.M.

MP14 RD 4



710~

715~

720~

725~

730~

735~

NOT REVISED
AS CONSTRUCTED

740~
DOUGLAS COUNTY ROAD DEPT
NORTH UMPQUA HWY RD#4
1973 SH.T. 7
GEORGE E. GRUBB COUNTY ENGR

13611419

M.P. 13.61-14.18

