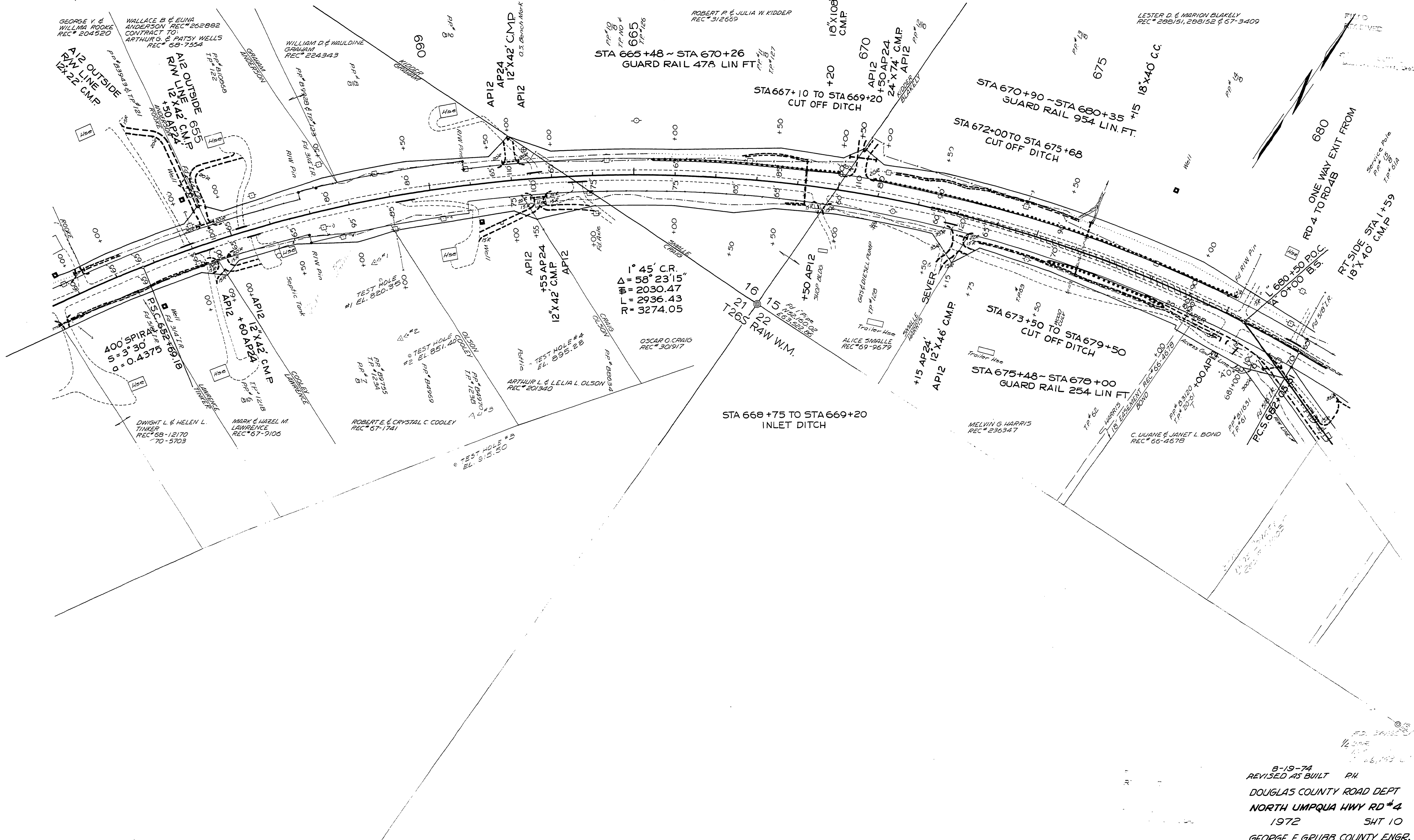


SEC 15,16,21,22 T26S R4W W.M.

RD 4



1° 45' C.R.  
 $\Delta = 58^{\circ} 23' 15''$   
 $\Sigma = 2030.47$   
 $\Gamma = 2936.43$   
 $R = 3274.05$

8-19-74  
 REVISED AS BUILT PH  
 DOUGLAS COUNTY ROAD DEPT  
 NORTH UMPQUA HWY RD #4  
 1972 SHT 10  
 GEORGE E. GRUBB COUNTY ENGR.

12531308

R1 #4

(8)