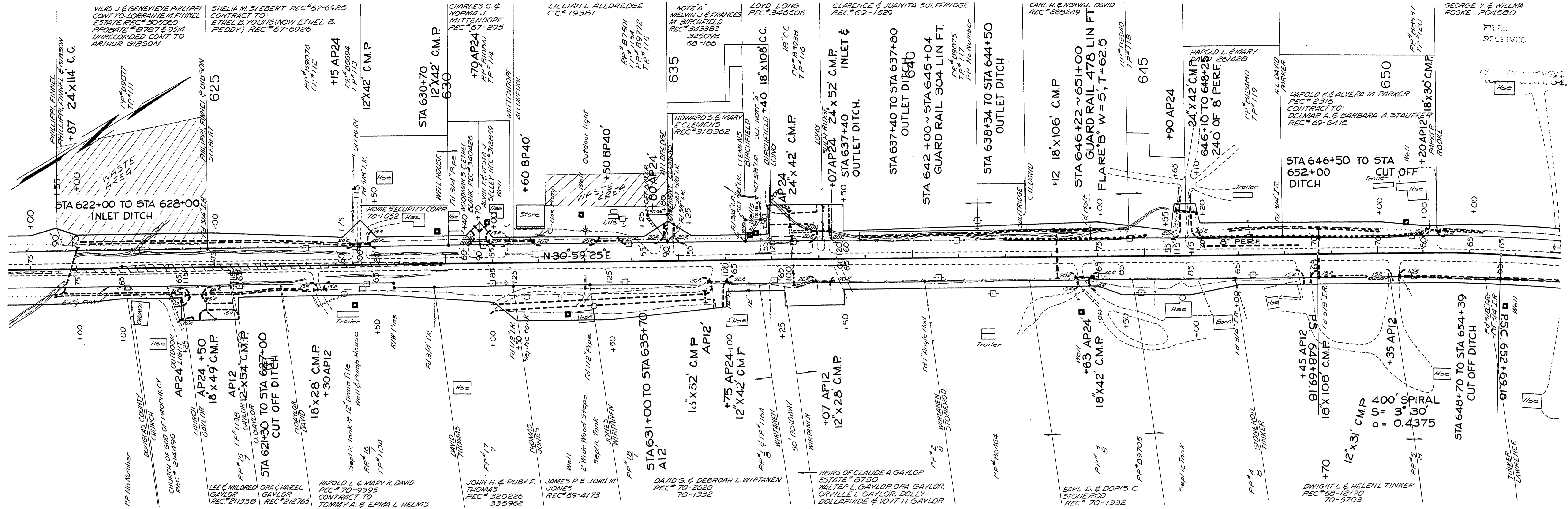


SEC 21 T26S R4W W.M.

MP12

RD 4



8-19-74
 REVISED AS BUILT PH
 DOUGLAS COUNTY ROAD DEPT
 NORTH UMPQUA HWY RD # 4
 1972 SHT 9
 GEORGE E. GRUBB COUNTY ENGR.

11981253

Handwritten initials