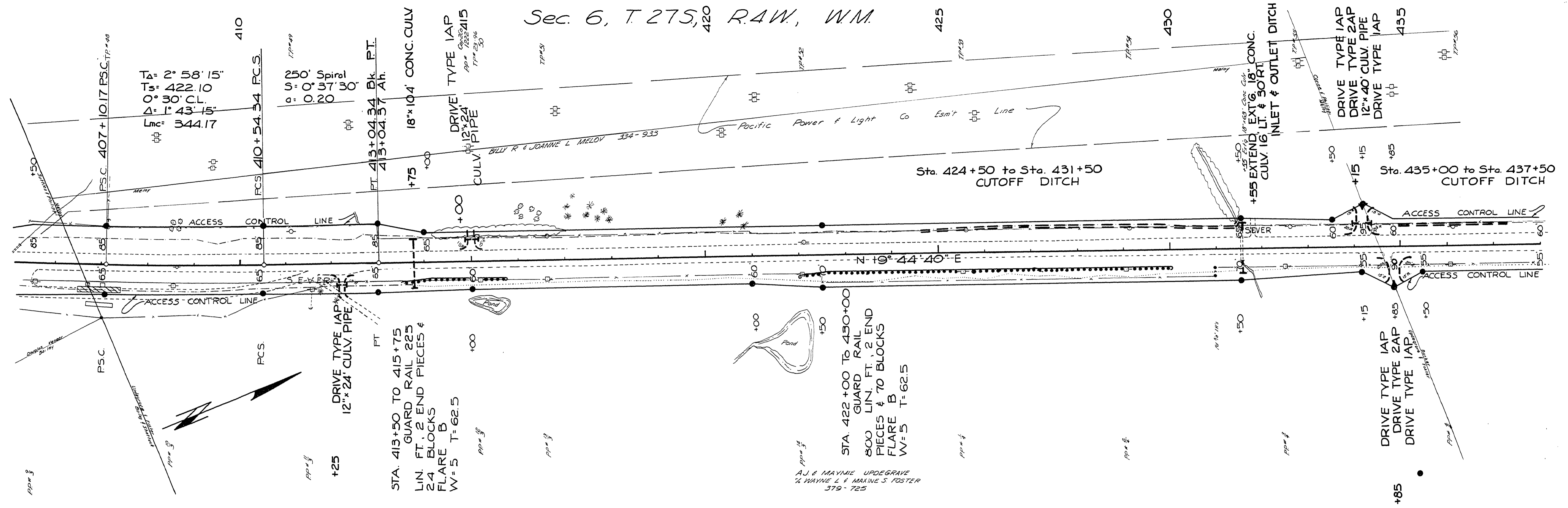


Sec. 6, T. 27S, R. 4W, W.M.



$T_A = 2^\circ 58' 15"$
 $T_S = 422.10$
 $\Delta = 1^\circ 43' 15"$
 $L_{MC} = 344.17$

$250'$
 $U = 0^\circ 51' 30"$
 $a = 0.20$

+25
 DRIVE TYPE IAP
 12" x 24" CULV. PIPE

STA. 413+50 TO 415+75
 GUARD RAIL 225
 LIN. FT. 2 END PIECES &
 24 BLOCKS
 FLARE B
 W=5 T=62.5

STA. 422+00 TO 430+00
 GUARD RAIL
 800 LIN. FT. 2 END
 PIECES & 70 BLOCKS
 FLARE B
 W=5 T=62.5

NOT REVISED
AS CONSTRUCTED

Douglas County Road Dept.
 NORTH UMPQUA HWY. #4
 Date: April 1970 Sheet 12
 GEORGE E. GRUBB County Engineer

07890842