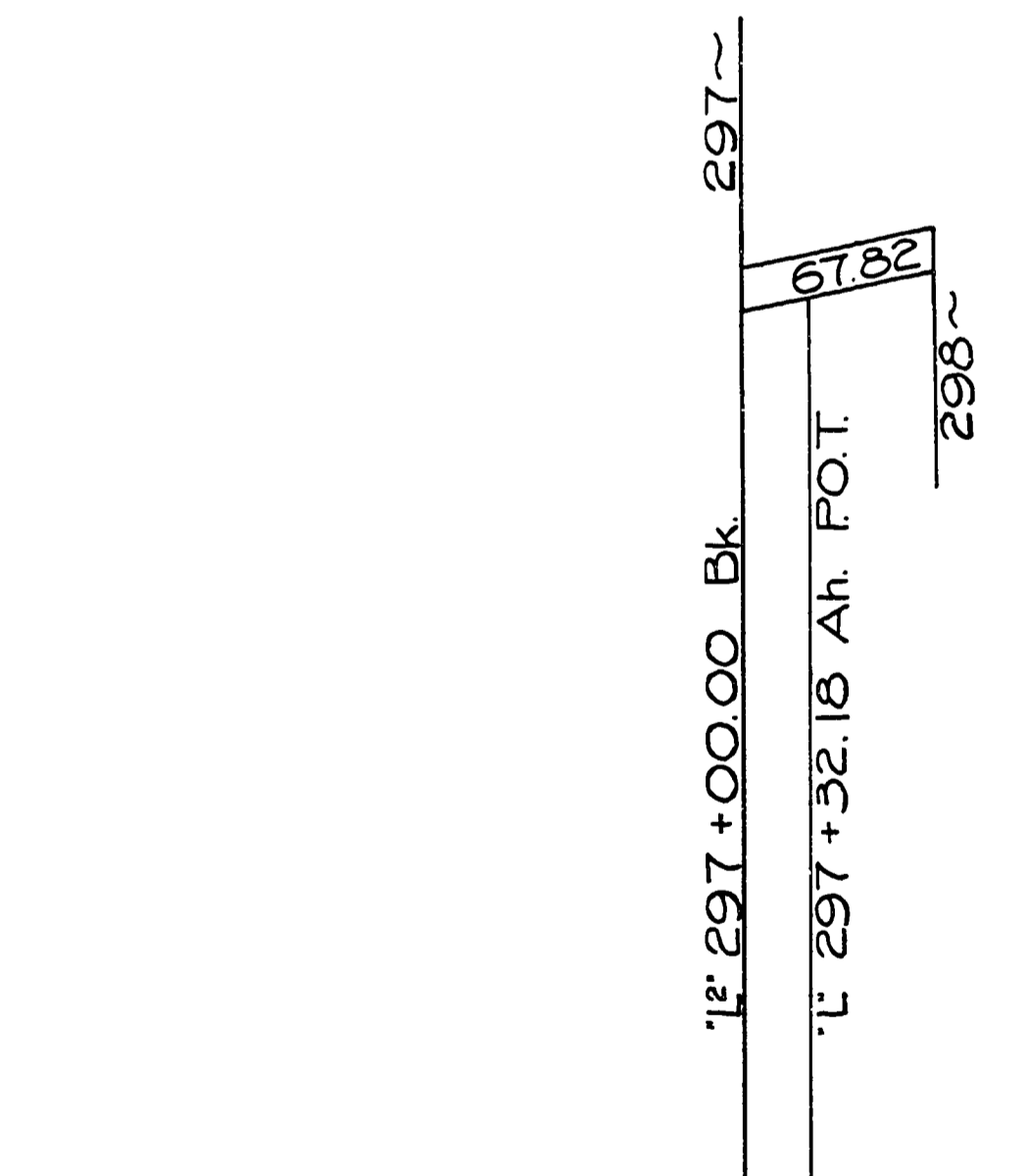
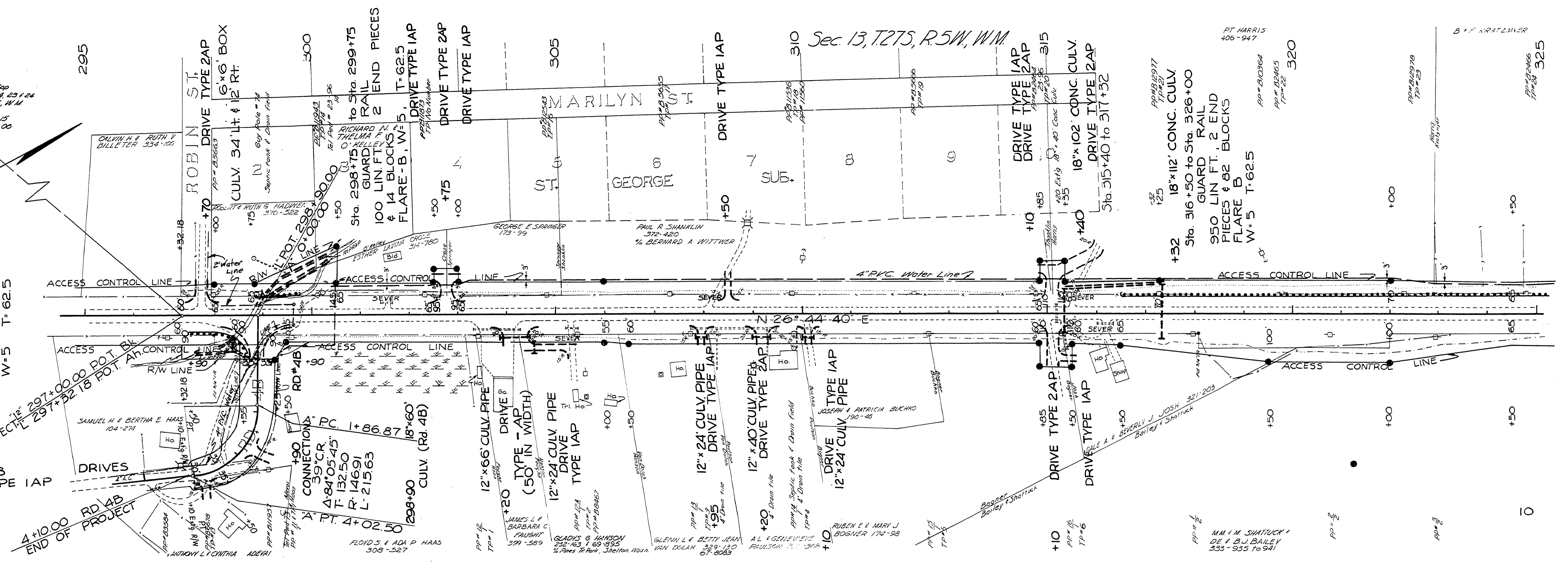


Sec. 13, T.27S, R.5W, W.M.

Fd. Cross Cap
Sec. Cor. 13, 14, 23 & 24
T.27S, R.5W, W.M.
Coords
N 20,339.15
E 42,789.00

Sta. 297+50 to 298+65
GUARD RAIL
125 LIN. FT., 2 END
PIECES, 20 BLOCKS
FLARE B
W=5 T=62.5

Coords for
Begin of Proj.
N 21,120.61
E 44,322.08



295

300

305

310

315

320

NOT REBUILT
AS CONSTRUCTED

Douglas County Road Dept.
NORTH UMPQUA HWY. #4
Date: April 1970 Sheet 8
GEORGE E. GRUBB County Engineer

05720628

M.P. 572-6.08

Pl. # 4