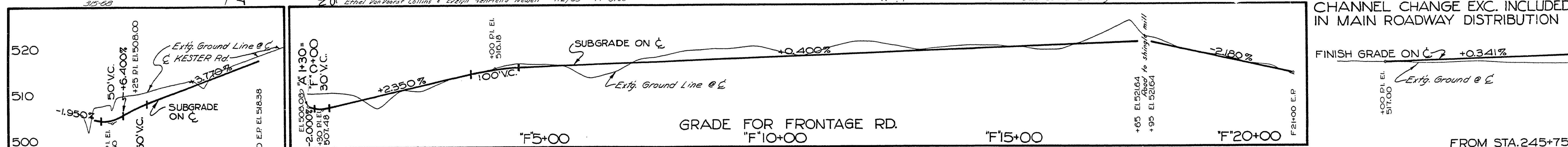
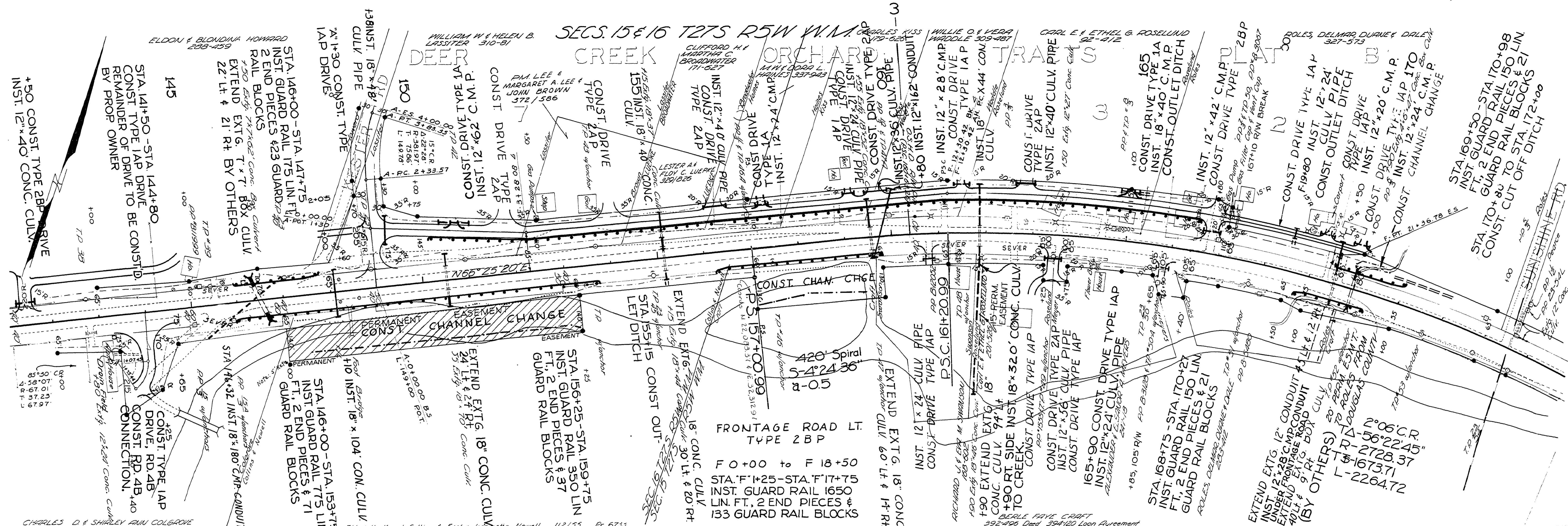


M.P.



| Station Range | Description | Excavation (Exc. C.Y.) | Embankment (Emb. C.Y.) |
|------------------|---|------------------------|------------------------|
| 145+00 to 146+00 | Channel Change Exc. Included in Main Roadway Distribution | 1975 | 175 |
| 146+00 to 150+00 | Channel Change Exc. Included in Main Roadway Distribution | 2172 | 5290 |
| 150+00 to 155+00 | Channel Change Exc. Included in Main Roadway Distribution | 4146 | 319 |
| 155+00 to 160+00 | Channel Change Embankment | 1870 | 1675 |
| 160+00 to 165+00 | Channel Change Embankment | 5903 | 416 |
| 165+00 to 170+00 | Channel Change Embankment | 671 | 601 |
| 170+00 to 172+00 | Channel Change Embankment | 751 | 216 |
| Total | OVERHAUL 1729.9 C.Y. STAS. | 3741.5 | 5290 |

DOUGLAS COUNTY RD. DEPT.
 NORTH UMPQUA HWY. RD. 4
 DATE-APR '69 SHEET 6 OF 14
 GEORGE E. GRUBB COUNTY ENGINEER

02700329