

These plans contain sheets  
 number 1 through 14,  
 2 std. pipe list sheets  
 1 std. Guard Rail sheet  
 1 std. symbols sheet  
 1 std. Box Culvert sheet  
 Total sheets 19

# DOUGLAS COUNTY OREGON

## PLANS FOR PROPOSED PROJECT

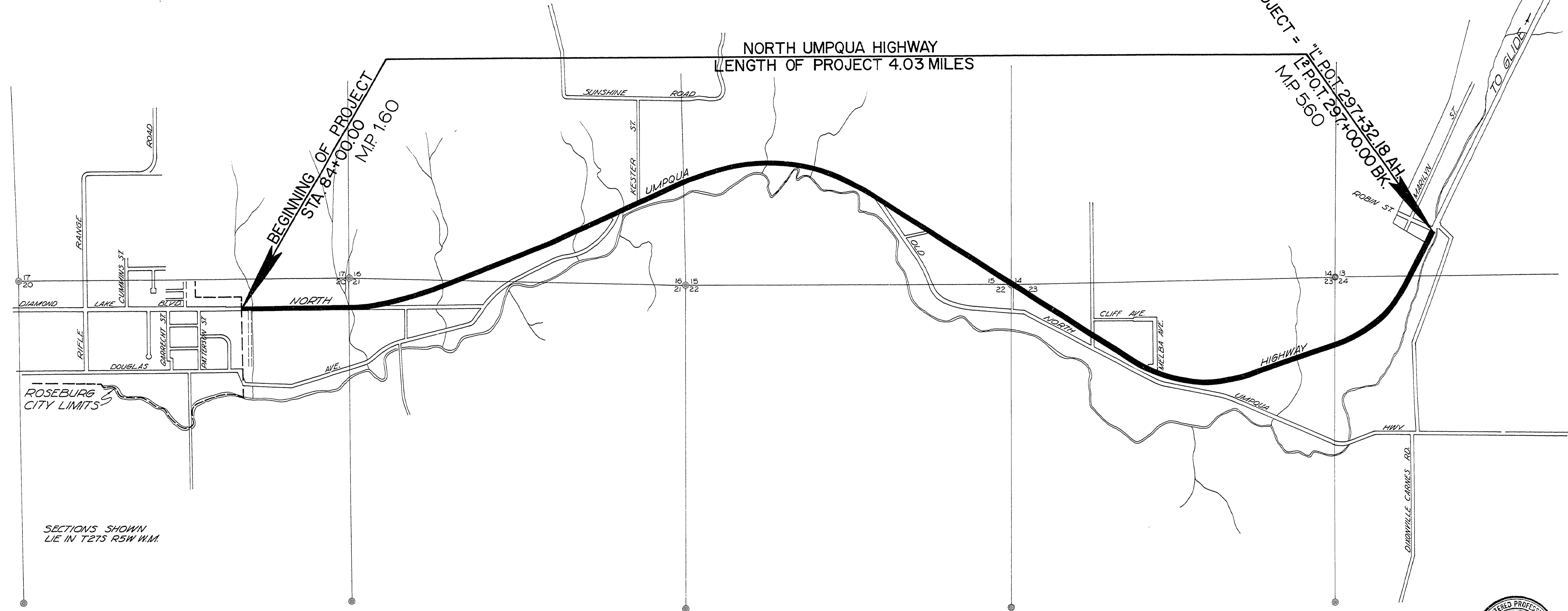
### GRADING & SURFACING

# NORTH UMPQUA HIGHWAY

## COUNTY ROAD NO. 4

APRIL 1969

END OF PROJECT = "I" P.O.T. 297+32.18 A.H.  
 "E" P.O.T. 297+00.00 B.K.  
 M.P. 560



NORTH UMPQUA HIGHWAY  
 LENGTH OF PROJECT 4.03 MILES

BEGINNING OF PROJECT  
 STA. 84+00.00  
 M.P. 160



*Not Revised to Date*  
 Douglas County Road Dept.  
**NORTH UMPQUA HWY. #4**  
 Date: April 1969 Sheet 1 of 14  
**GEORGE E. GRUBB** County Engineer

0152056C