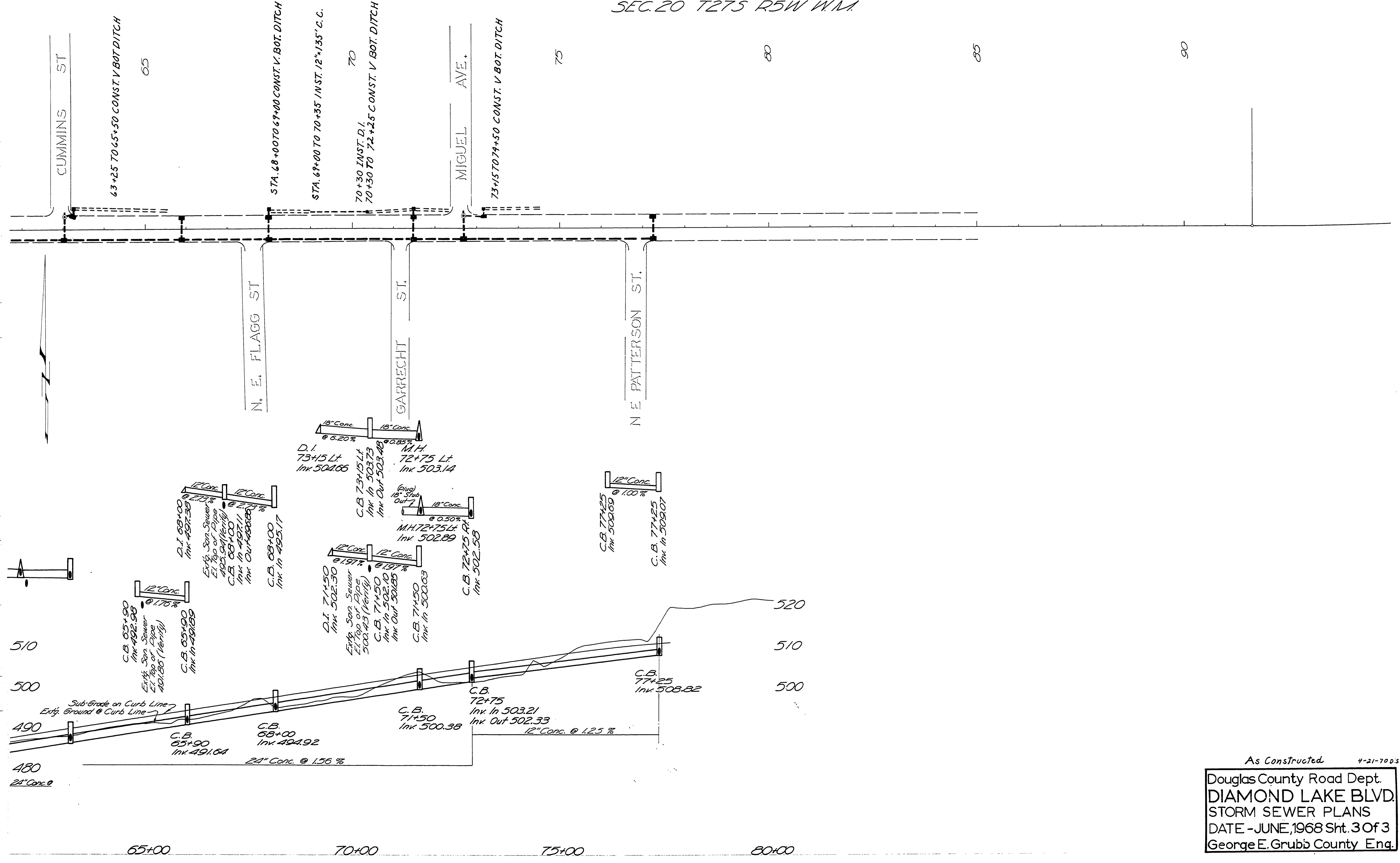


SEC. 20 T275 R5W W.M.



As Constructed 4-21-700.S.  
 Douglas County Road Dept.  
**DIAMOND LAKE BLVD.**  
 STORM SEWER PLANS  
 DATE - JUNE, 1968 Sht. 3 of 3  
 George E. Grubb County Eng.

01220147

Rd # 4

M.P. 1.22 - 1.47

JUNE 1968 Sht. 3 of 3