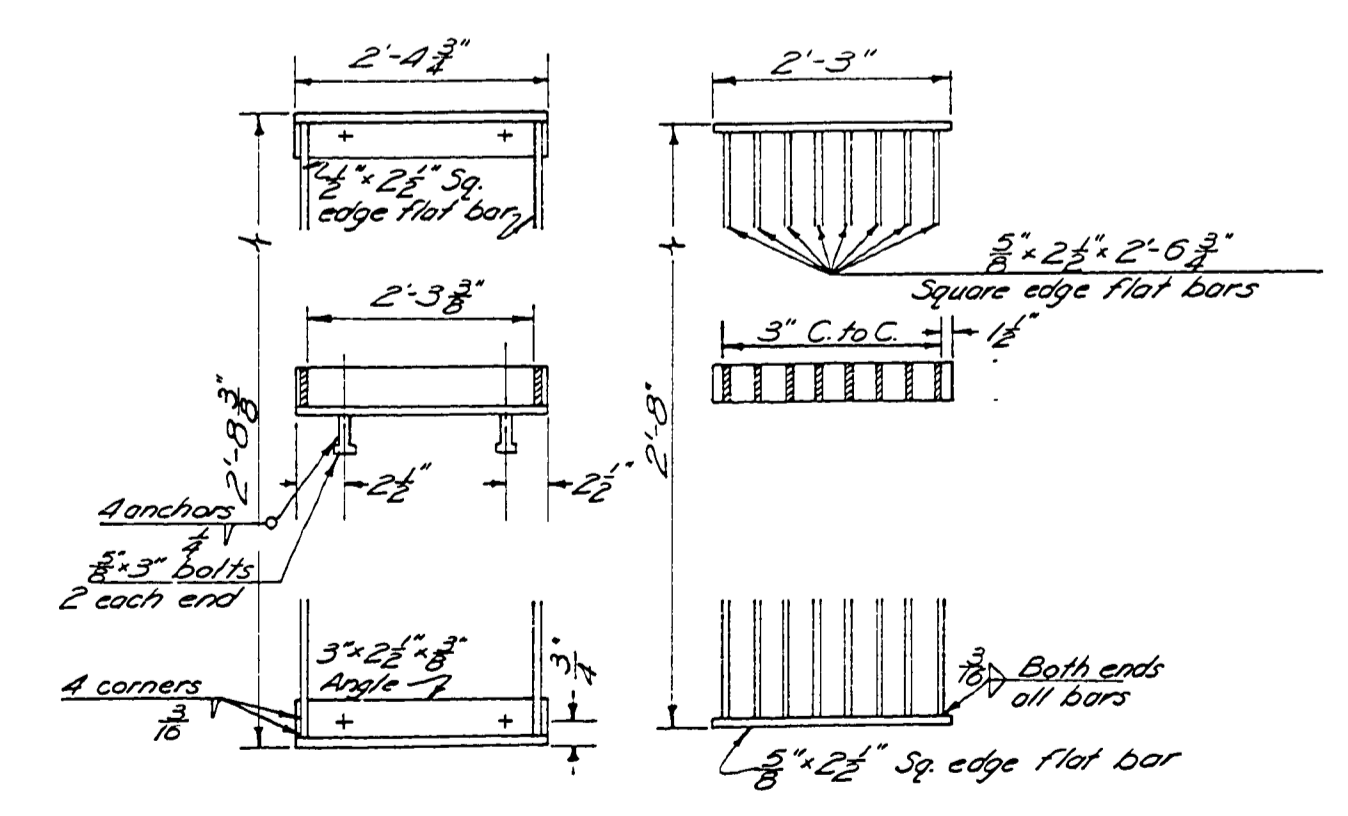
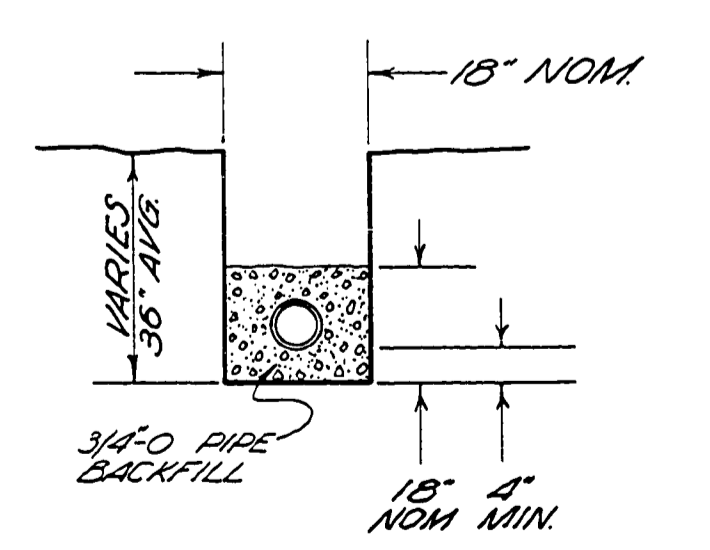
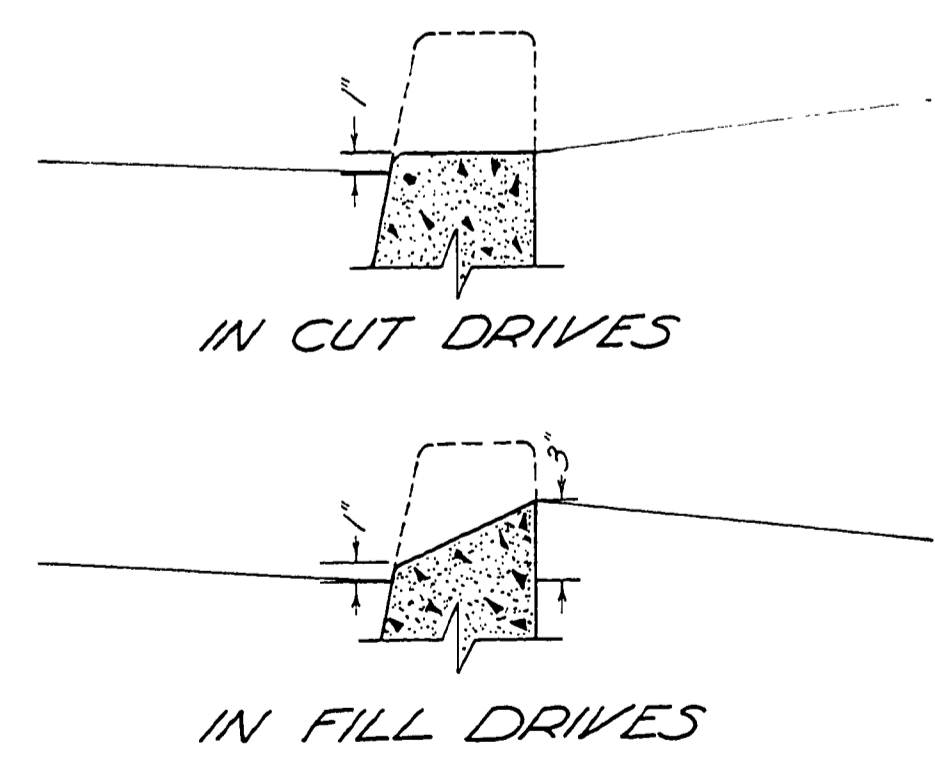
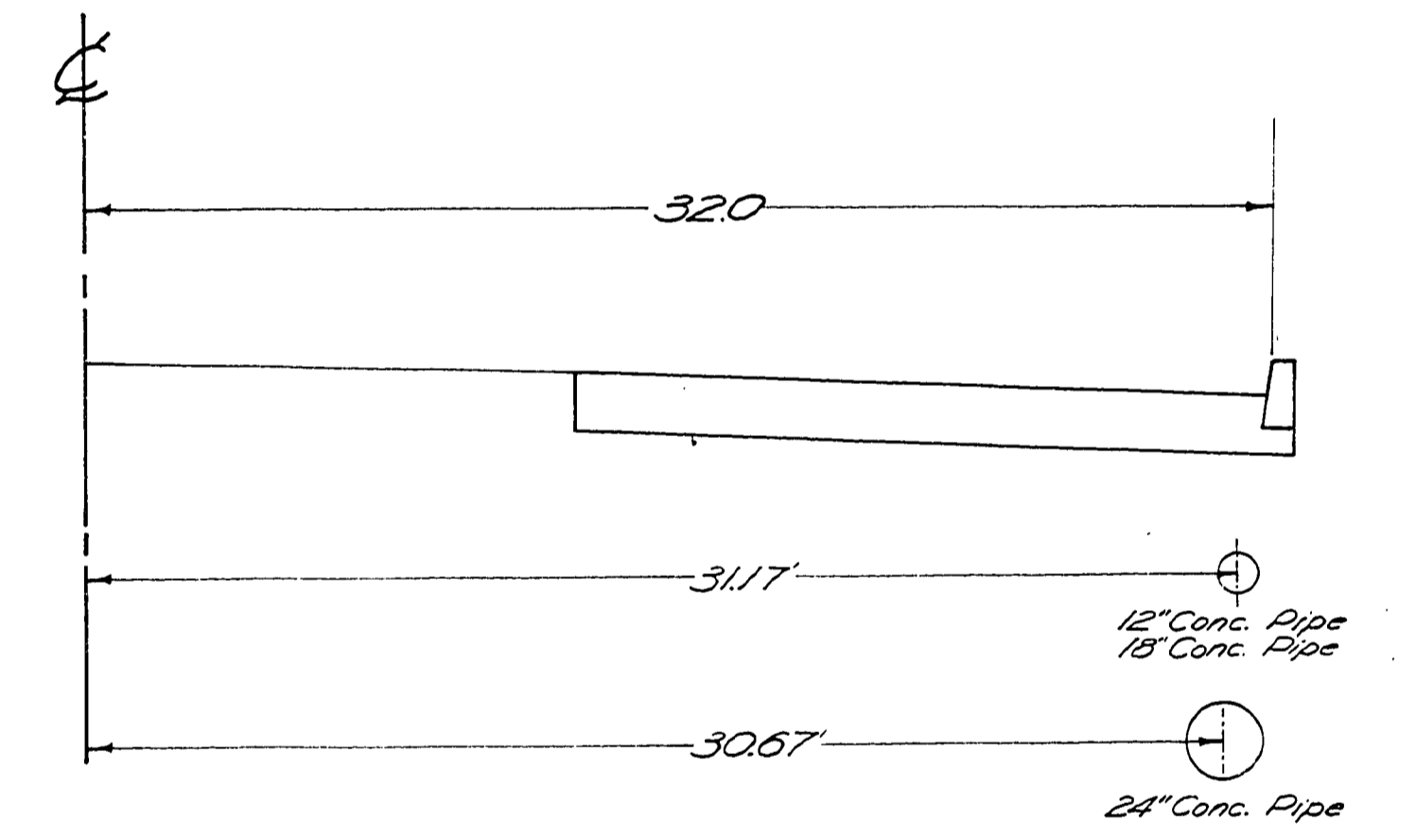
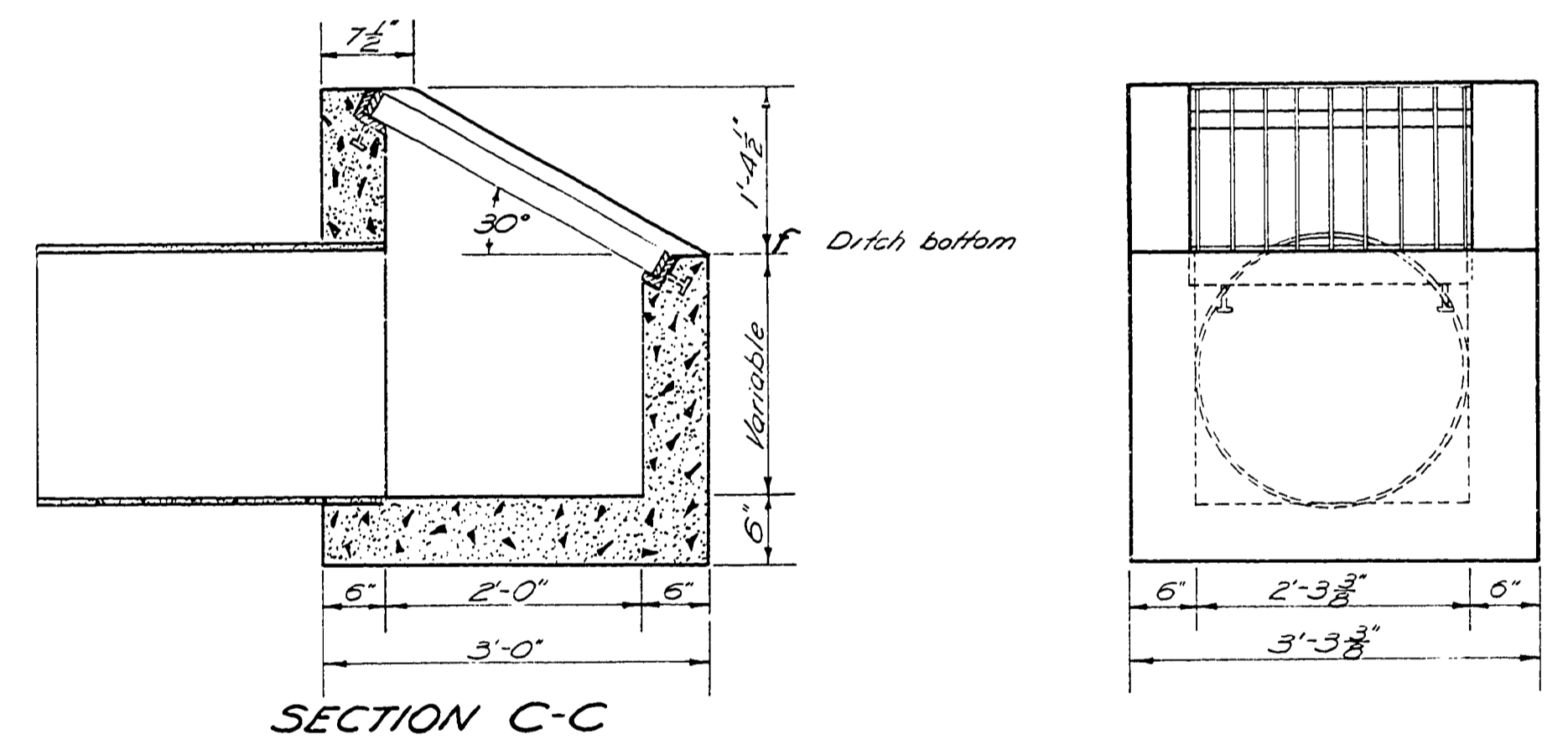


DITCH EXCAVATION
STA. 60+70 - 62+75 L.T.
STA. 63+25 - 65+50 L.T.
STA. 68+00 - 69+00 L.T.
STA. 70+75 - 72+25 L.T.
STA. 73+15 - 74+50 L.T.
STA. 82+75 - 83+90 L.T.



Douglas County Road Dept.
DIAMOND LAKE BLVD. RD. 4
Date: June, 1968 Sheet 3 of 8
GEORGE E. GRUBB County Engineer

RD # 4

00160179