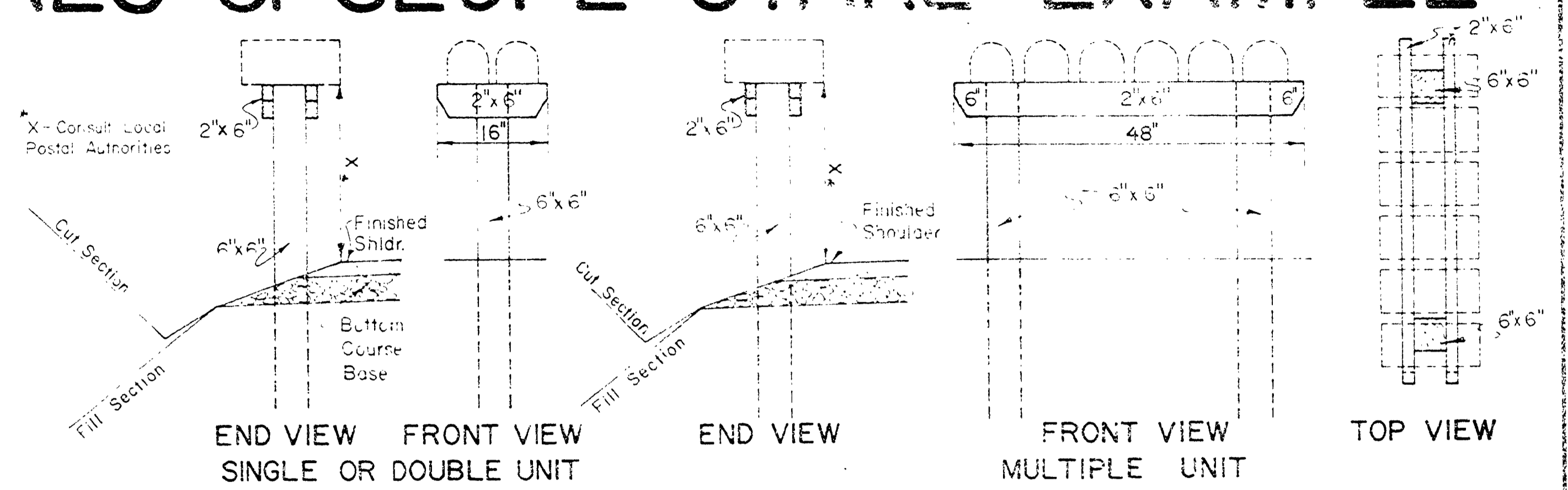


# PIPE LIST, MAIL BOX STAND, DRIVEWAY TYPICALS & SLOPE STAKE EXAMPLE

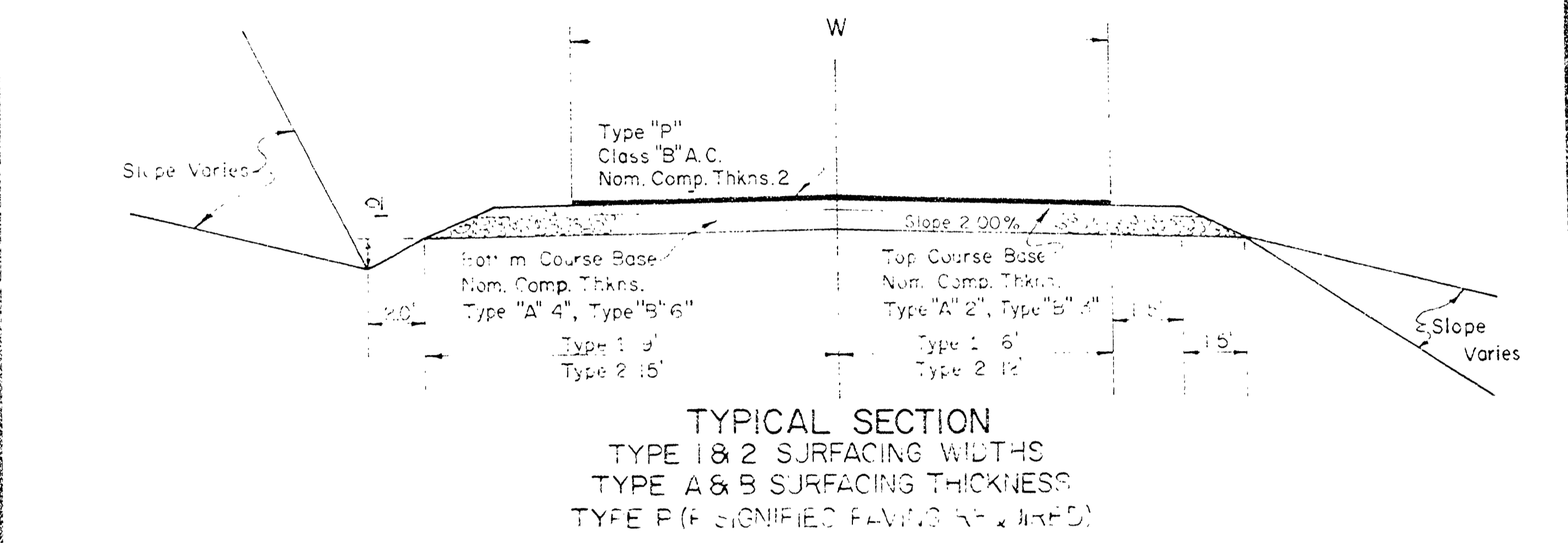
STATION	DIAMETER	LENGTH	PIPE LIST					TRENCH EXC. CU. YDS.	REMARKS STRUTTED END TREATMENT, IMPERFECT TRENCH ETC.	
			ALUMINUM			GALV. STEEL				CONCRETE
			ANNULAR CORR. GAGE	HELICAL CORR.	ASPHALT COATED	ANNULAR CORR. GAGE	HELICAL CORR. ASPHALT COATED			CLASS III V Conc. Pipe thru 18" may be unreinforced if strength meets class III bearing requirements.
298+90	18"	60'					✓	12		
304+30	12"	66'				16/16 ✓	✓	2		
304+35	12"	24'				16/16 ✓	✓	1		
307+95	12"	24'				16/16 ✓	✓	1		
309+20	12"	40'				16/16 ✓	✓	2		
310+10	12"	24'				16/16 ✓	✓	1		
315+40	18"	102'					✓	43		
317+32	18"	112'					✓	62		
333+76	18"	108'					✓	55		
339+19	18"	104'					✓	42		
342+06	18"	108'					✓	45		
345+10	12"	24'				16/16 ✓	✓	1		
349+37	18"	102'					✓	42		
356+93	18"	102'					✓	42		
359+90	72"	48'				10 ✓	✓	8	Sloped Ends	
360+52	18"	102'					✓	53		
361+20	18"	24'				16/16 ✓	✓	2		
367+85	24"	100'					✓	45		
370+10	18"	40'				16/16 ✓	✓	3		
377+20	18"	40'				16/16 ✓	✓	3		
387+25	18"	42'					✓	15		
387+25	12"	24'				16/16 ✓	✓	1		
403+70	12"	24'				16/16 ✓	✓	1		
404+26	12"	64'					✓	24		
404+95	12"	60'				16/16 ✓	✓	4		
412+25	12"	24'				16/16 ✓	✓	1		
413+75	18"	104'					✓	61		
415+00	12"	24'				16/16 ✓	✓	1		
431+55	18"	46'					✓	4		
434+15	12"	40'				16/16 ✓	✓	2		
444+35	18"	24'				16/16 ✓	✓	2		
447+10	12"	24'				16/16 ✓	✓	1		
450+45	18"	42'					✓	3		
453+50	12"	24'				16/16 ✓	✓	1		
463+00	18"	24'				16/16 ✓	✓	2		
463+00	12"	40'				16/16 ✓	✓	2		
464+61	36"	56'					✓	12		
470+00	12"	40'				16/16 ✓	✓	2		
470+00	12"	24'				16/16 ✓	✓	1		
477+25	18"	40'				16/16 ✓	✓	3		
480+63	24"	108'					✓	65		
483+75	18"	40'				16/16 ✓	✓	3		
487+00	36"	56'					✓	5		
488+40	12"	24'				16/16 ✓	✓	1		
494+35	12"	40'				16/16 ✓	✓	2		
495+55	12"	24'				16/16 ✓	✓	1		
503+00	12"	24'				16/16 ✓	✓	1		
503+74	36"	104'					✓	61		

NOTE: PIPE LENGTHS & LOCATIONS TO BE VERIFIED IN FIELD.

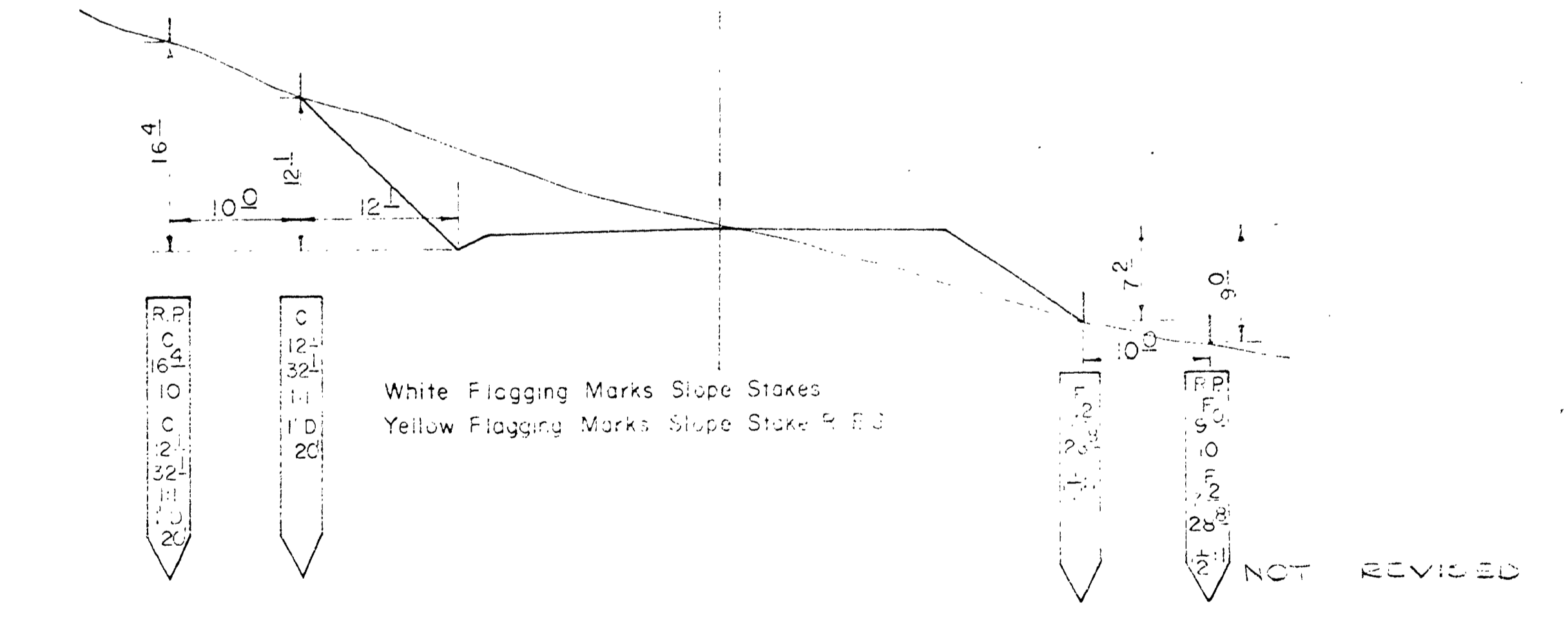


NOTE: All Posts to be of Cedar, Posts to be Set a Minimum of 24" Below the Surface of the Ground.

## TYPICAL MAIL BOX STAND



## RURAL DRIVEWAY & ROAD APPROACH STANDARD



## SLOPE STAKE EXAMPLE

AS CONSTRUCTED

JOB NAME	North Unionville Hwy
JOB NUMBER	Road #4
DATE	April 1970
Douglas County Road Dept.	
PIPE LIST, MAIL BOX STAND RURAL DRIVEWAY & SLOPE STAKE EX.	
Date: May 1969 Std. Dwng. 1	

Rd #4

0000SLOP