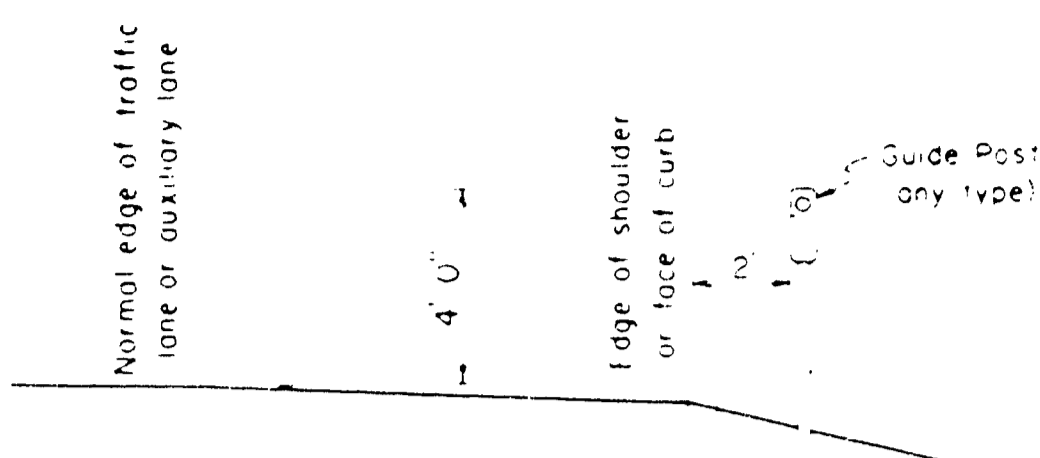


GUIDE POSTS

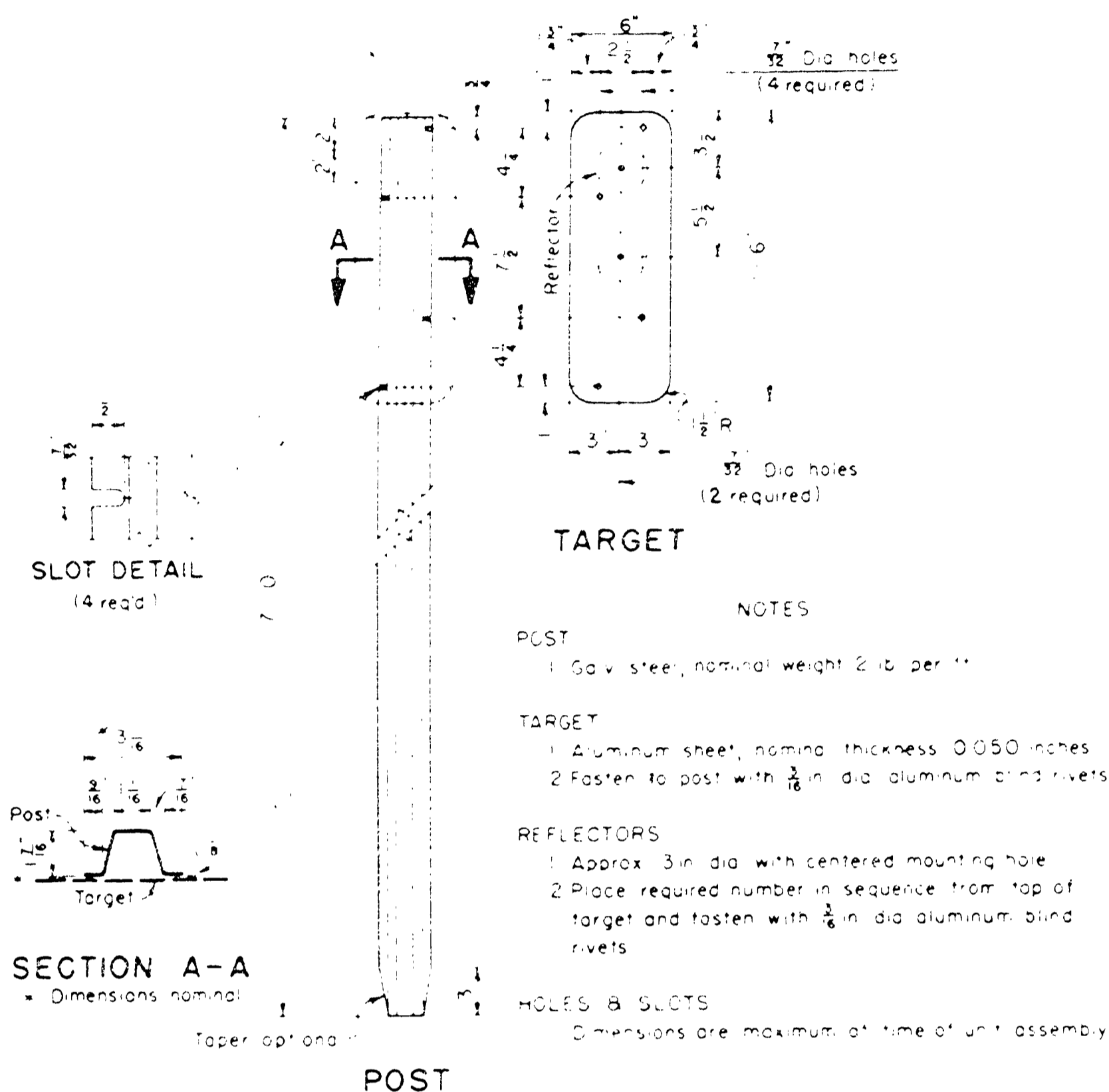
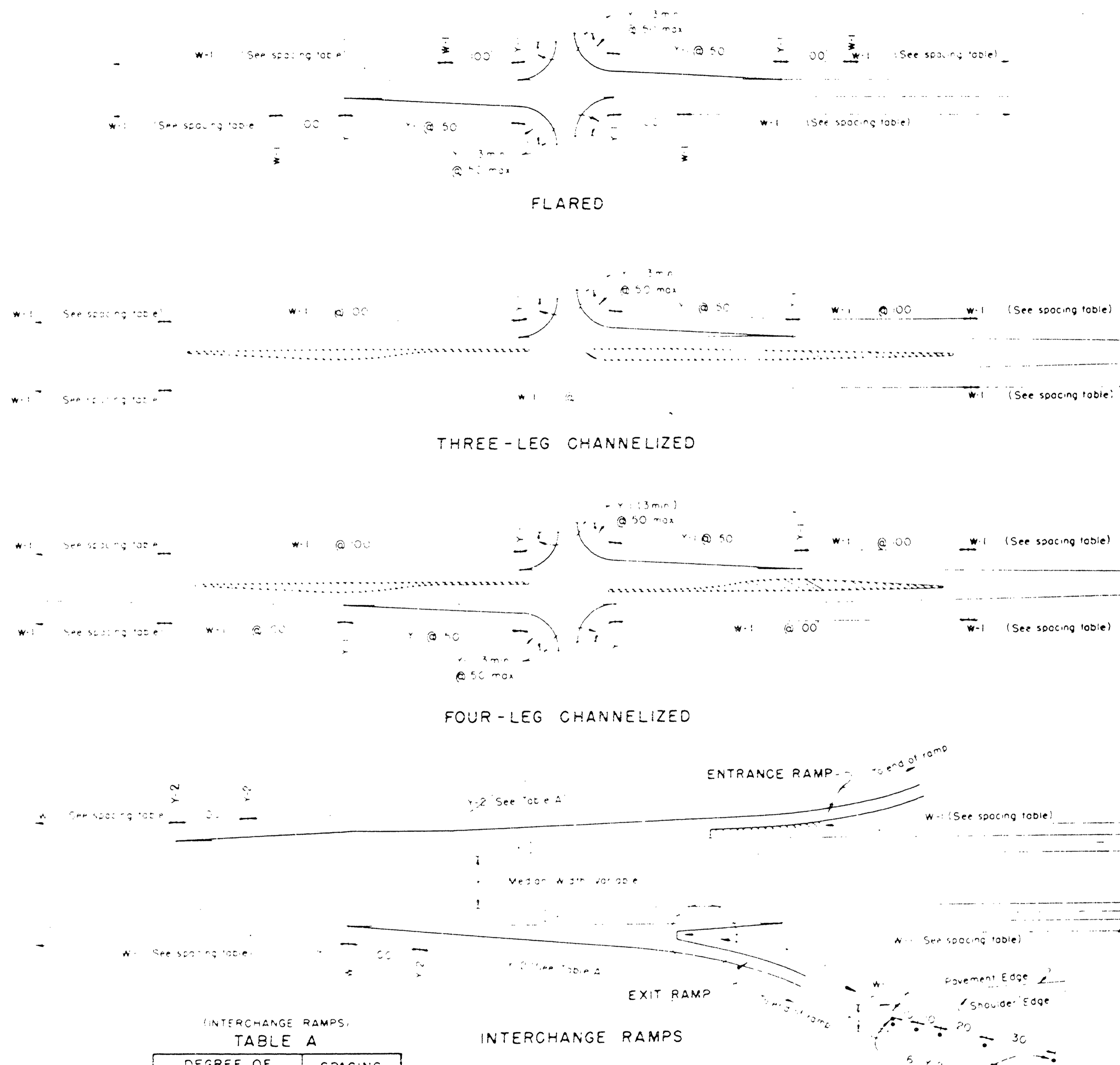
| TYPE | COLOR OF REFLECTOR AND TARGET | NUMBER OF REFLECTORS |
|------|-------------------------------|----------------------|
| W-1 | White | 1 |
| Y-1 | Yellow | 1 |
| Y-2 | Yellow | 2 |

INSTALLATION



NOTE
 1. At guard rail locations the guide posts are to be installed behind the rail.
 2. Install all guide posts with reflectors facing adjacent or coming traffic.

GUIDE POST TYPES & SPACINGS AT INTERSECTIONS



TARGET

- NOTES
- POST
 1. Galv. steel, nominal weight 2 lb. per ft.
- TARGET
 1. Aluminum sheet, nominal thickness 0.050 inches
 2. Fasten to post with 3/8 in. dia. aluminum blind rivets
- REFLECTORS
 1. Approx. 3 in. dia. with centered mounting hole
 2. Place required number in sequence from top of target and fasten with 3/8 in. dia. aluminum blind rivets

SPACING TABLE

| GUIDE POST TYPE | HIGHWAY | SPACING EACH SIDE |
|-----------------|---|-------------------|
| W-1 | Interstate | 264 ft. |
| W-1 | Non-Interstate Divided | 400 ft. |
| W-1 | Non-Interstate Undivided | * 400 ft. |
| Y-1 | See channelized and flared plans at right | |
| Y-2 | See interchange ramps plan at right | |

* For variations on horizontal curves and crest vertical curves, see tables below.

- To clear driveways, crossroads, etc. or for required adjustments at ramps and intersections, either (a) vary placement of that post up to 1/8 of spacing shown, or (b) eliminate said post if limit of variation must be exceeded.
- Judgement should be exercised in the installation of guide posts in cut sections, particularly on roads constructed to older standards where ditches are narrow and where guide posts tend to hamper maintenance operations.

(UNDIVIDED) HORIZONTAL CURVES

| DEGREE OF CURVE | SPACING EACH SIDE OF ROADWAY IN FEET | | |
|-----------------|--------------------------------------|------------------------------|--------------|
| | ON CURVE | IN ADVANCE OF & BEYOND CURVE | |
| | | FIRST SPACE | SECOND SPACE |
| 1 | 300 | 400 | 400 |
| 2 | 210 | 380 | 400 |
| 3 | 170 | 310 | 400 |
| 4 | 150 | 270 | 400 |
| 5 | 130 | 230 | 400 |
| 6 | 120 | 200 | 350 |
| 7-8 | 100 | 180 | 300 |
| 9-10 | 90 | 160 | 270 |
| 11-12 | 80 | 140 | 240 |
| 13-18 | 70 | 130 | 210 |
| 19-25 | 60 | 110 | 180 |
| 26-Up | 50 | 100 | 150 |

(UNDIVIDED) CREST VERTICAL CURVES

| ALGEBRAIC DIFFERENCE IN GRADE PERCENT | VERTICAL CURVE LENGTH IN FEET | | | | | | | | | | | | |
|---------------------------------------|--------------------------------------|-----|-----|-----|-----|-----|-----|------|------|------|------|------|------|
| | SPACING EACH SIDE OF ROADWAY IN FEET | | | | | | | | | | | | |
| | 100 | 200 | 300 | 400 | 500 | 600 | 800 | 1000 | 1200 | 1400 | 1600 | 1800 | 2000 |
| 0.5 | 220 | 300 | 400 | 400 | 400 | | | | | | | | |
| 1 | 150 | 230 | 280 | 340 | 380 | 400 | | | | | | | |
| 2 | 110 | 180 | 230 | 270 | 300 | 340 | 400 | 400 | | | | | |
| 3 | 100 | 150 | 190 | 230 | 260 | 290 | 340 | 380 | 400 | | | | |
| 4 | | 130 | 170 | 200 | 230 | 250 | 300 | 340 | 370 | 400 | | | |
| 5 | | 110 | 150 | 180 | 200 | 220 | 270 | 300 | 340 | 370 | 400 | 400 | 400 |
| 6 | | 100 | 120 | 150 | 170 | 190 | 230 | 260 | 290 | 310 | 340 | 360 | 380 |
| 7 | | | 110 | 130 | 150 | 170 | 200 | 230 | 250 | 270 | 300 | 320 | 340 |
| 8 | | | 100 | 110 | 130 | 150 | 180 | 200 | 230 | 250 | 270 | 290 | 300 |
| 9 | | | | 100 | 120 | 130 | 160 | 180 | 200 | 230 | 240 | 260 | 280 |
| 10 | | | | | 100 | 110 | 130 | 150 | 170 | 190 | 200 | 220 | 230 |
| 12 | | | | | | 100 | 110 | 130 | 150 | 160 | 180 | 190 | 200 |

INTERCHANGE RAMP TABLE A

| DEGREE OF CURVE | SPACING feet |
|-----------------|--------------|
| 1-8 | 100 |
| 9-12 | 90 |
| 13-18 | 80 |
| 19-25 | 70 |
| 26-Up | 60 |

For curves exceeding 8 degrees to the right and sections of traffic, guide posts shall also be installed on the left for the length of the curve.
 2. Spacing shall be measured along the shoulder.

NOTE: Material and workmanship shall be in accordance with the current Oregon State Highway Department Specifications.

DOUGLAS COUNTY ROAD DEPT.
 1000 N. Main Street
 Medford, Oregon 97504

GUIDE POSTS

DATE APPROVED: 12/19/66
 REVISIONS: 12/19/66
 APPROVED: [Signature]
 DRG. NO. 2106

0000POST

Rd #4
 # 138