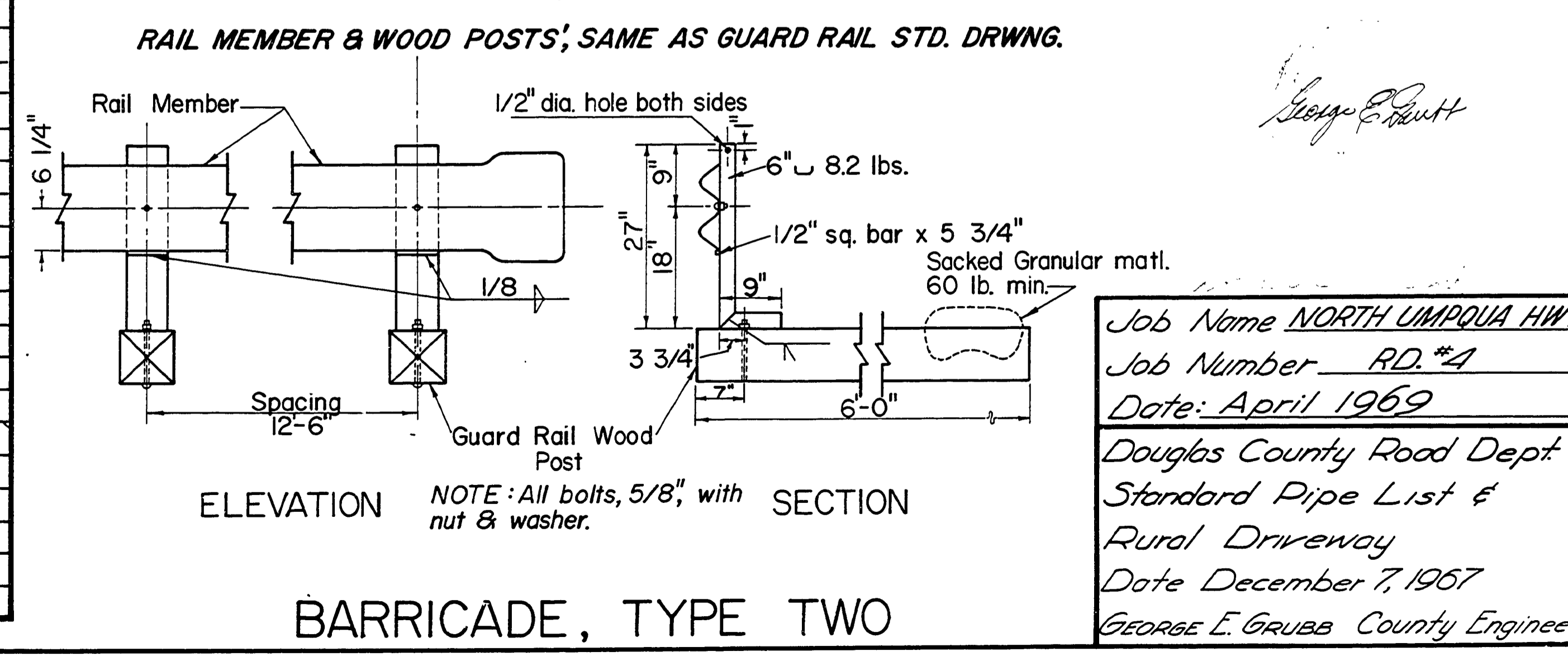
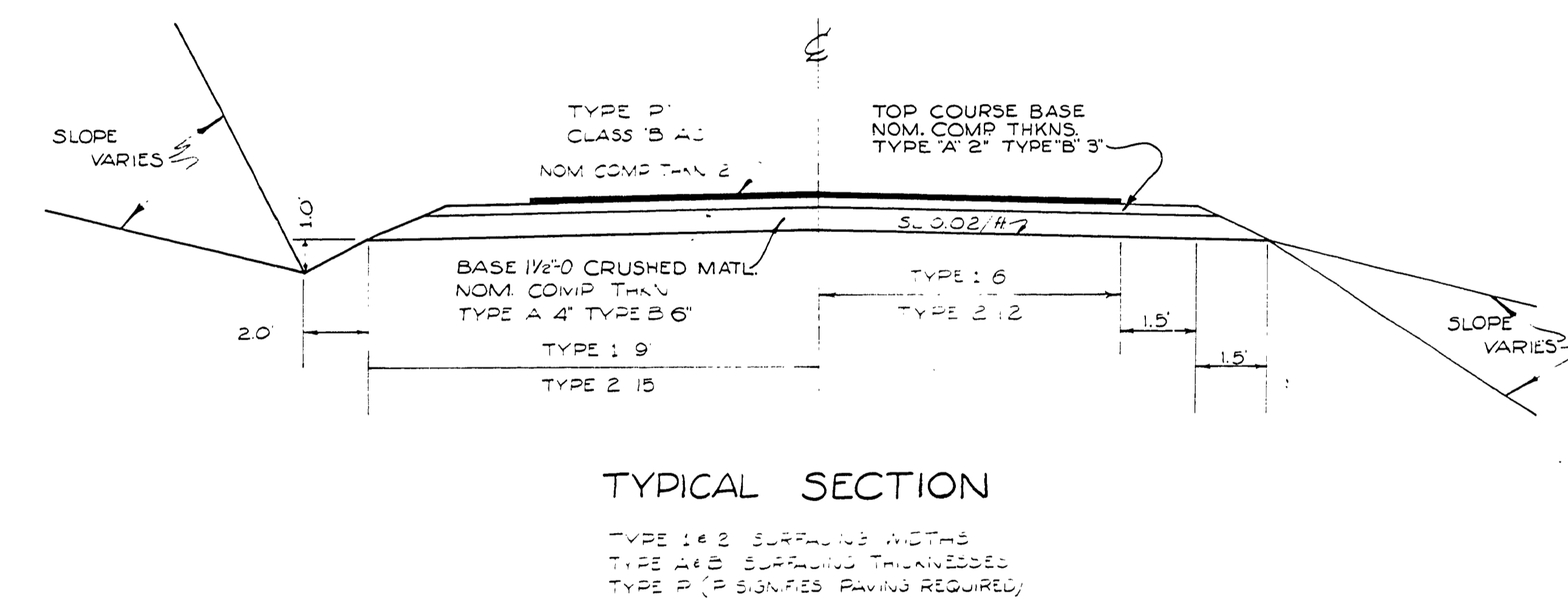
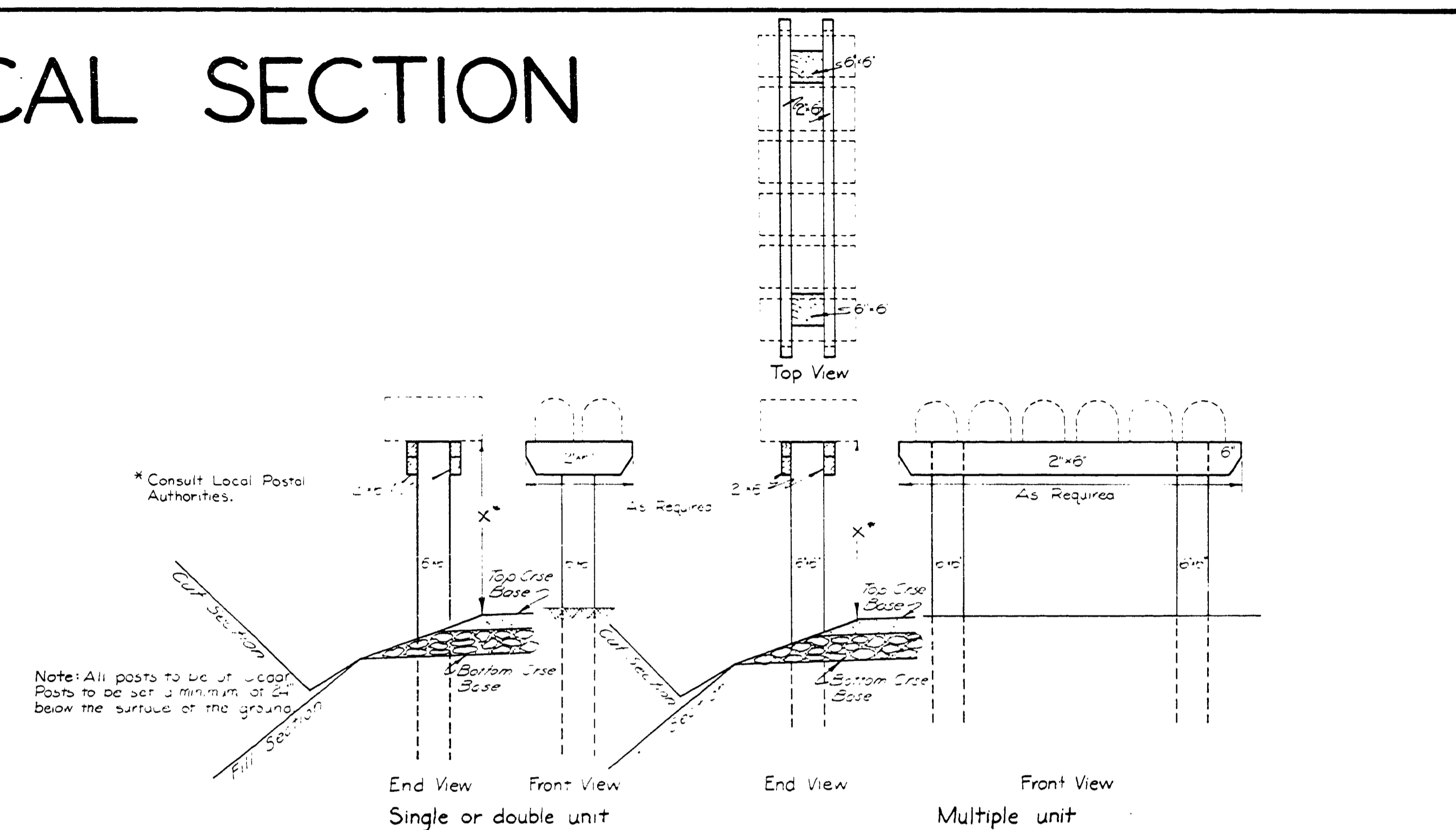


PIPE LIST & DRIVEWAY TYPICAL SECTION

STATION	DIAMETER	LENGTH	MATERIALS						TRENCH EXC. CU. YDS.	REMARKS STRUTTED END TREATMENT IMPERFECT TRENCH, ETC.	
			ALUMINUM			GALV. STEEL					CONCRETE
			ANNULAR CORR. GAGE	HELICAL CORR.	ASPHALT COATED	ANNULAR CORR. GAGE	HELICAL CORR.	ASPHALT COATED			
85+80	18"	24'							1	EXTEND CULVERT PIPE	
90+30	12"	40'				16	16	✓	2	" "	
92+39	18"	33'						✓	3	EXTEND " "	
98+85	18"	28'				16	16	✓	2	" "	
99+40	24"	118'						✓	58	" "	
102+32	12"	36'				16	16	✓	2	" "	
105+00	18"	42'						✓	1	EXTEND " "	
110+45	18"	52'						✓	12	" "	
113+45	24"	16'						✓	3	" "	
115+35	24"	36'						✓	3	" "	
120+55	12"	36'				16	16	✓	2	" "	
126+25	12"	40'				"	"	✓	2	" "	
127+35	24"	36'						✓	2	EXTEND " "	
135+40	12"	42'				16	16	✓	6	" "	
140+98	18"	36'				"	"	✓	3	EXTEND " "	
148+10	18"	104'						✓	44	" "	
149+30	18"	60'				16	16	✓	15	" "	
150+55	18"	40'						✓	4	EXTEND " "	
155+15	18"	50'						✓	10	" "	
155+15	18"	44'						✓	2	" "	
156+30	12"	48'				16	16	✓	2	" "	
159+15	12"	24'				16	16	✓	1	" "	
159+55	18"	50'						✓	10	EXTEND " "	
160+80	12"	24'				16	16	✓	1	" "	
161+90	18"	56'						✓	24	EXTEND " "	
161+90	18"	38'						✓	13	" "	
162+85	12"	44'						✓	2	" "	
163+85	12"	36'				"	"	✓	2	" "	
168+50	12"	24'						✓	5	" "	
169+50	12"	49'						✓	14	CONDUIT	
175+85	18"	52'						✓	18	EXTEND CULVERT PIPE	
178+50	36"	42'						✓	15	" "	
181+85	18"	52'				"	"	✓	7	" "	
184+85	18"	52'				"	"	✓	7	" "	
190+30	18"	40'						✓	4	EXTEND " "	
197+40	12"	40'				16	16	✓	2	" "	
204+40	12"	36'				"	"	✓	2	" "	
205+10	18"	40'				"	"	✓	3	" "	
209+85	12"	24'				"	"	✓	1	" "	
213+54	18"	40'						✓	2	EXTEND " "	
215+45	12"	32'				16	16	✓	2	" "	
218+50	18"	92'						✓	33	" "	
220+00	12"	32'				16	16	✓	2	" "	
224+00	18"	36'						✓	2	EXTEND " "	
224+10	24"	36'						✓	2	" "	
225+85	12"	30'				16	16	✓	2	" "	
229+70	12"	40'				"	"	✓	2	" "	
230+15	18"	48'				"	"	✓	3	" "	
233+15	18"	44'						✓	6	EXTEND " "	
236+35	18"	24'				16	16	✓	2	" "	
241+90	18"	40'				"	"	✓	3	" "	
249+38	18"	112'						✓	80	" "	
253+76	18"	116'						✓	101	" "	



Job Name NORTH UMPQUA HWY.
 Job Number RD. #4
 Date: April 1969
 Douglas County Road Dept.
 Standard Pipe List &
 Rural Driveway
 Date December 7, 1967
 GEORGE E. GRUBB County Engineer

0000PIPE