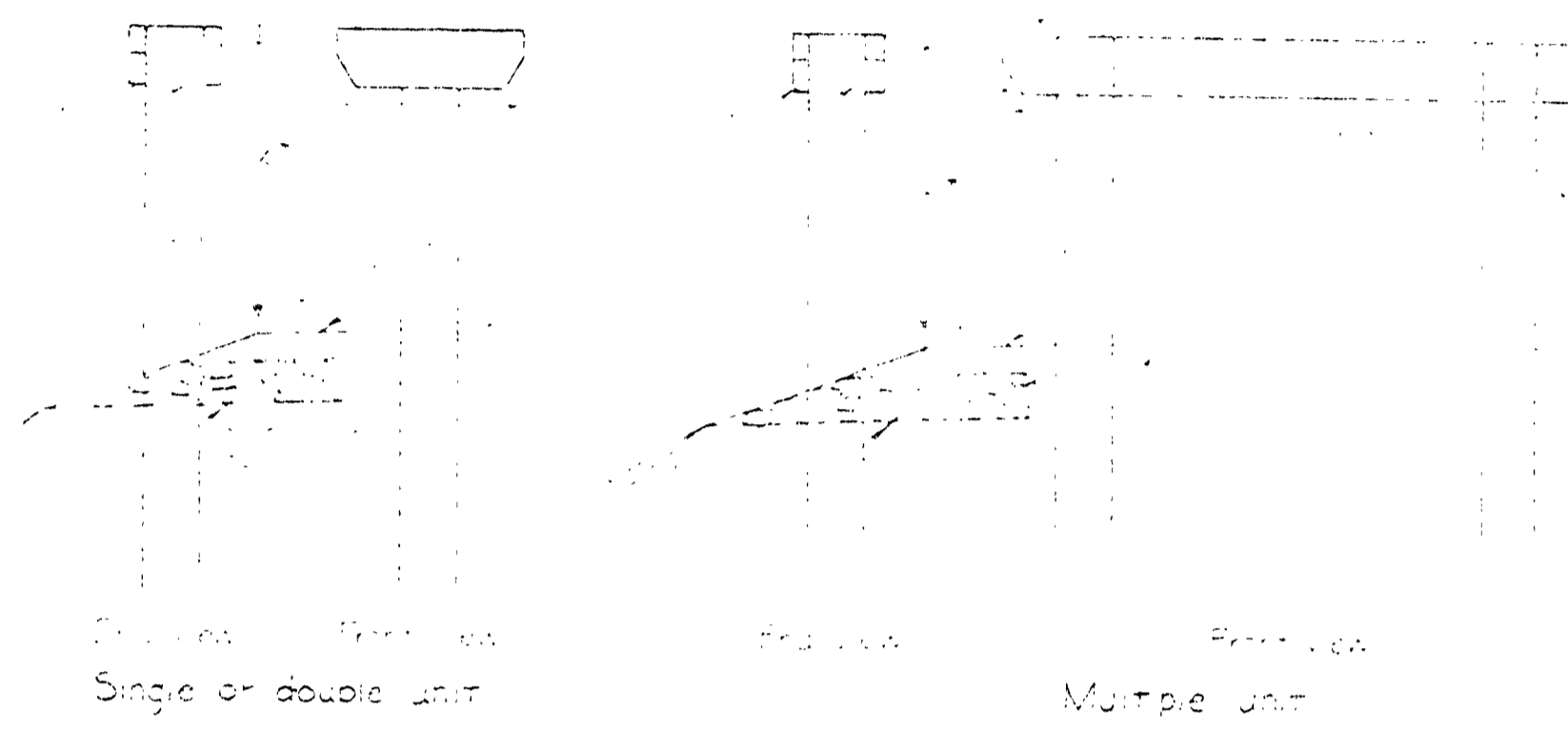


PIPE LIST & DRIVEWAY TYPICAL SECTION

PIPE LIST

STATION	DIAMETER	LENGTH	MATERIALS			TRENCH EXC. CU. YDS.	REMARKS
			ALUMINUM	GALV. STEEL	CONCRETE		
260+00	18"	150			✓	88	PERFORATED PIPE CULVERT PIPE
266+35	24"	116'			✓	98	
268+00	12"	30'			✓	2	
283+10	18"	115'			✓	79	
286+65	18"	124'			✓	96	
289+50	18"	112'			✓	64	
289+90	18"	24'		16 16 ✓	✓	2	
293+10	18"	108'			✓	40	
294+65	18"	96'			✓	29	
159+70	12"	36'		16 16 ✓	✓	2	
159+80	12"	153'			✓	45	CONDUIT
STATIONS & LENGTH OF PIPES TO BE VERIFIED IN FIELD.							
THE FOLLOWING PIPES ARE ON RD. 4B							
29+05	24"	6'			✓	1	EXTEND CULVERT PIPE
29+50	12"	24'		16 16 ✓	✓	1	"
30+75	12"	24'		" ✓	✓	1	"
52+50	12"	24'		" ✓	✓	1	"
54+70	18"	76'			✓	42	"
57+50	12"	24'		16 16 ✓	✓	1	"
60+40	30"	20'			✓	2	EXTEND
63+20	12"	24'		16 16 ✓	✓	1	"
63+50	12"	24'		" ✓	✓	1	"
64+00	12"	24'		" ✓	✓	1	"
64+40	12"	24'		" ✓	✓	1	"
65+50	12"	24'		" ✓	✓	1	"
66+50	12"	36'		" ✓	✓	2	"
68+10	12"	40'		" ✓	✓	2	"
73+60	18"	16'			✓	7	EXTEND
74+60	78"	92'		8 ✓	✓	230	STRUTTED/SLOPED ENDS
75+50	12"	24'		16 16 ✓	✓	1	CULVERT PIPE
75+65	12"	24'		" ✓	✓	1	"

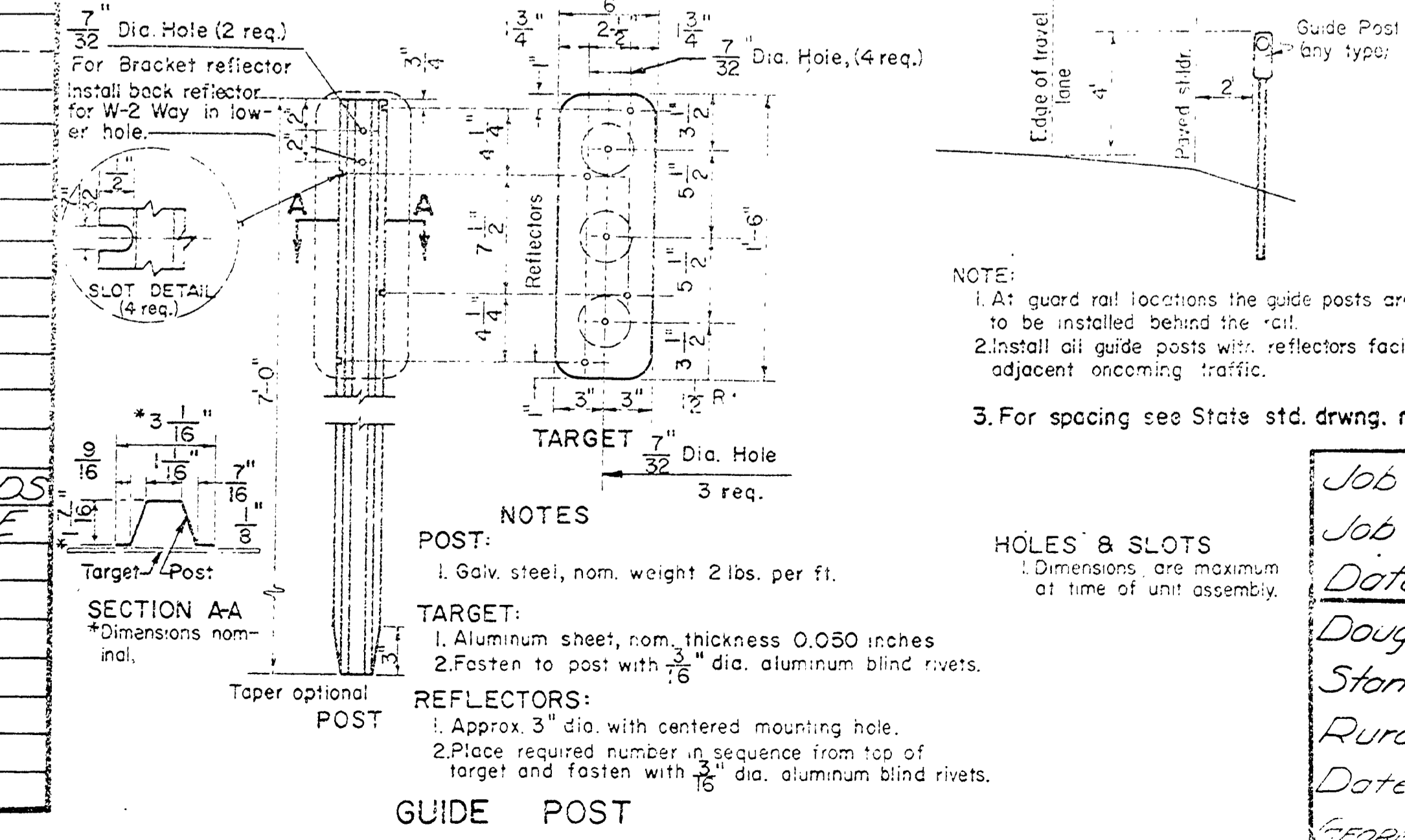


TYPICAL MAIL BOX STAND

GUIDE POSTS		
TYPE	COLOR OF REFLECTOR & TRGT.	NUMBER OF REFLECTORS
W-1	WHITE	1
W-2 Way	WHITE	2
Y-1	YELLOW	1
Y-2	YELLOW	2
Y-3	YELLOW	3

TYPICAL SECTION

RURAL DRIVEWAY & ROAD APPROACH STANDARD



- NOTE:
- At guard rail locations the guide posts are to be installed behind the rail.
 - Install all guide posts with reflectors facing adjacent oncoming traffic.
 - For spacing see State std. drwg. no. 2-8.1 *Not Based on Const.*

- POST:
- Galv. steel, nom. weight 2 lbs. per ft.
- TARGET:
- Aluminum sheet, nom. thickness 0.050 inches
 - Fasten to post with $\frac{3}{16}$ " dia. aluminum blind rivets.
- REFLECTORS:
- Approx. 3" dia. with centered mounting hole.
 - Place required number in sequence from top of target and fasten with $\frac{3}{16}$ " dia. aluminum blind rivets.

Job Name NORTH UMPQUA HWY.
 Job Number Road 4 & Road 4B
 Date April 1969
 Douglas County Road Dept
 Standard Pipe List &
 Rural Driveway
 Date December 7, 1967
 GEORGE E. GRUBB COUNTY ENGINEER

Rd #4 RD #4 April 1969 17 39

10000PIP2