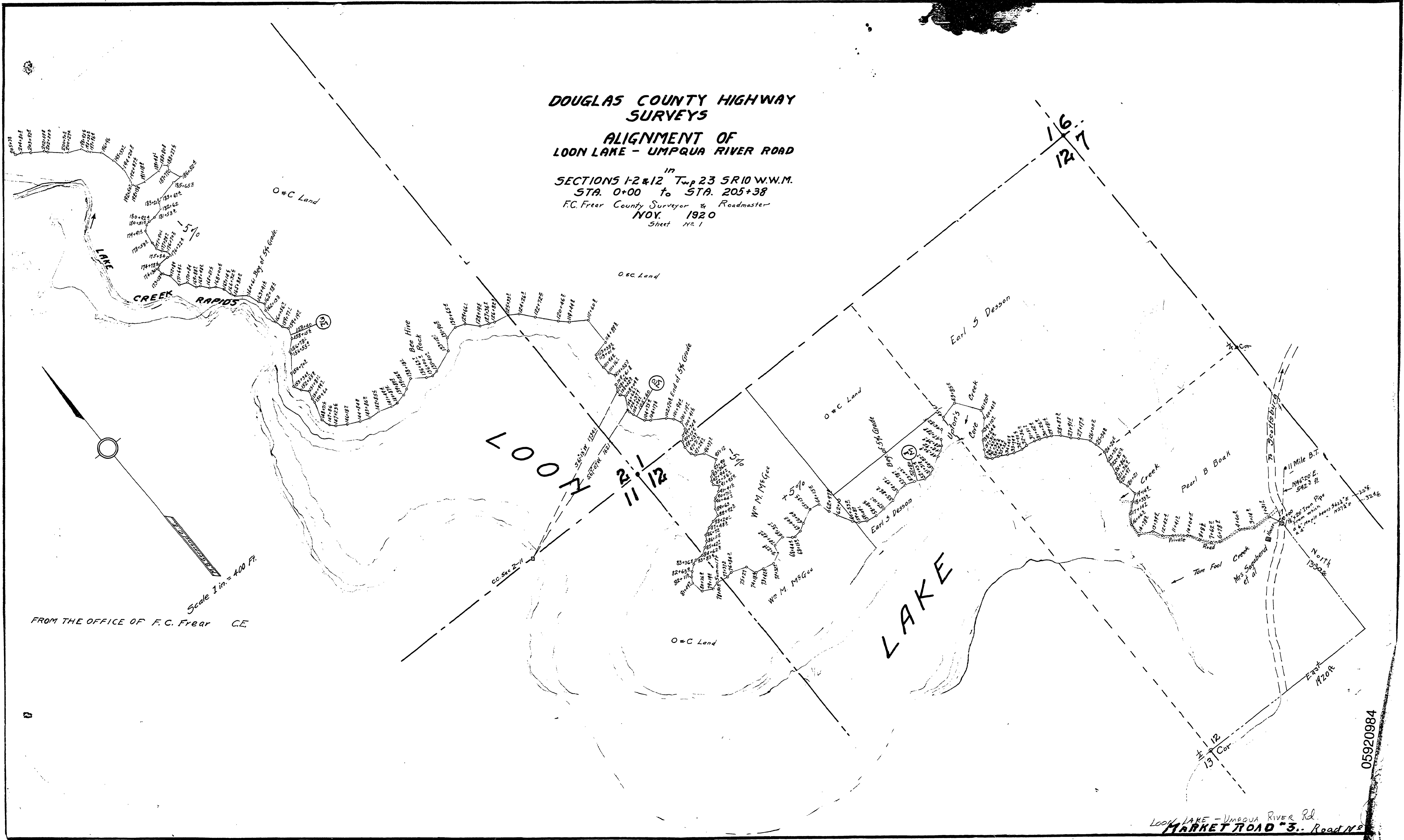


DOUGLAS COUNTY HIGHWAY SURVEYS

ALIGNMENT OF LOON LAKE - UMPQUA RIVER ROAD

in
SECTIONS 1-2 & 12 Twp 23 SR10 W.W.M.
STA. 0+00 to STA. 205+38
 F.C. Frear County Surveyor & Roadmaster
NOV. 1920
 Sheet No. 1



FROM THE OFFICE OF F. C. Frear C.E.

Scale 1 in. = 400 Ft.

05920984

Loon Lake - Umpqua River Rd.
MARKET ROAD "3" - Road No.