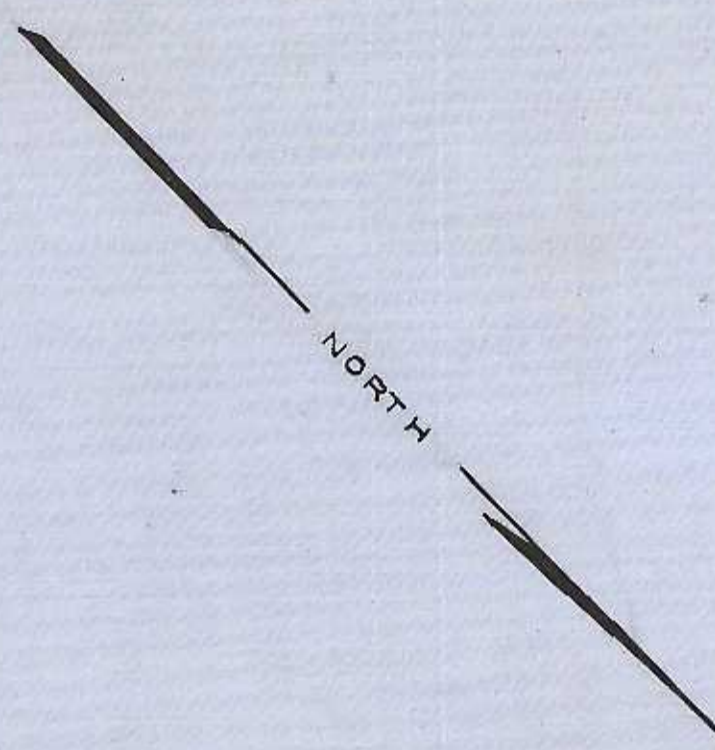
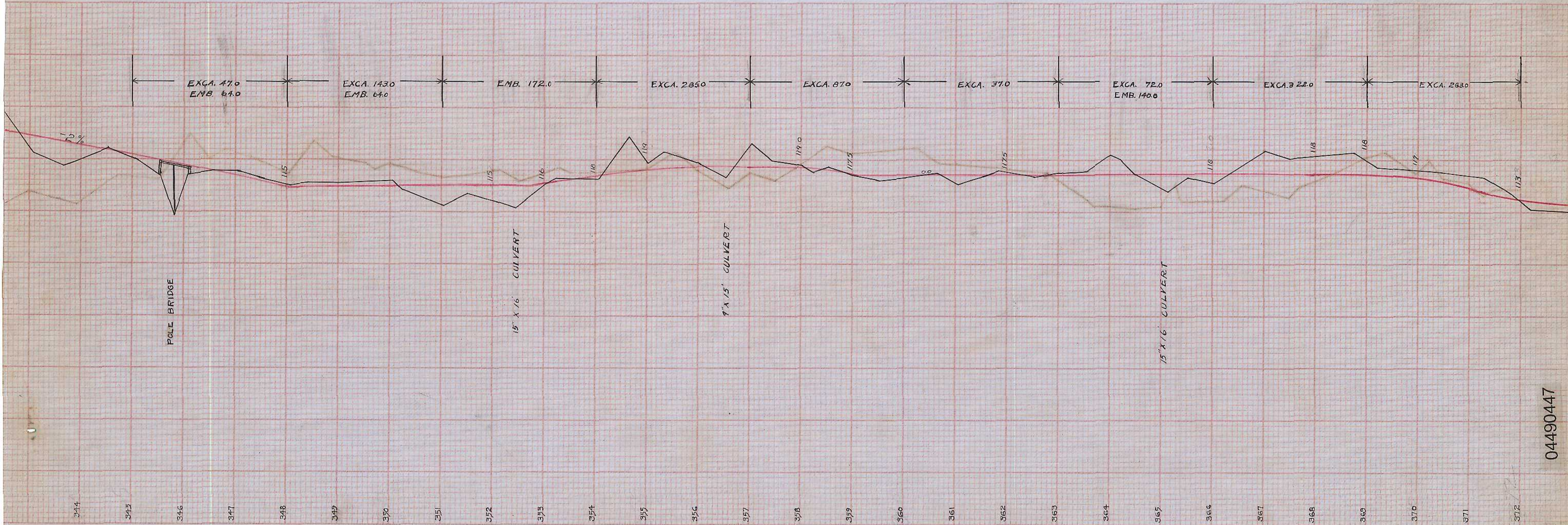


MILL CREEK



DOUGLAS COUNTY
 HIGHWAY IMPROVEMENT
 PROFILE AND ALIGNMENT
 LOON LAKE ROAD
 MARKET ROAD NO. 3
 SHEET 9
 St. 371+37 to St 343+88
 OFFICE OF
 F. C. FREAR CO. ENGR.
 SEPT. 2, 1925

1428



344 345 346 347 348 349 350 351 352 353 354 355 356 357 358 359 360 361 362 363 364 365 366 367 368 369 370 371 372

M.P. 4.99-4.47

“SHEET 9”
 SEPT. 2, 1925 SHT. 7 of 8

Road No. 3

04490447

13