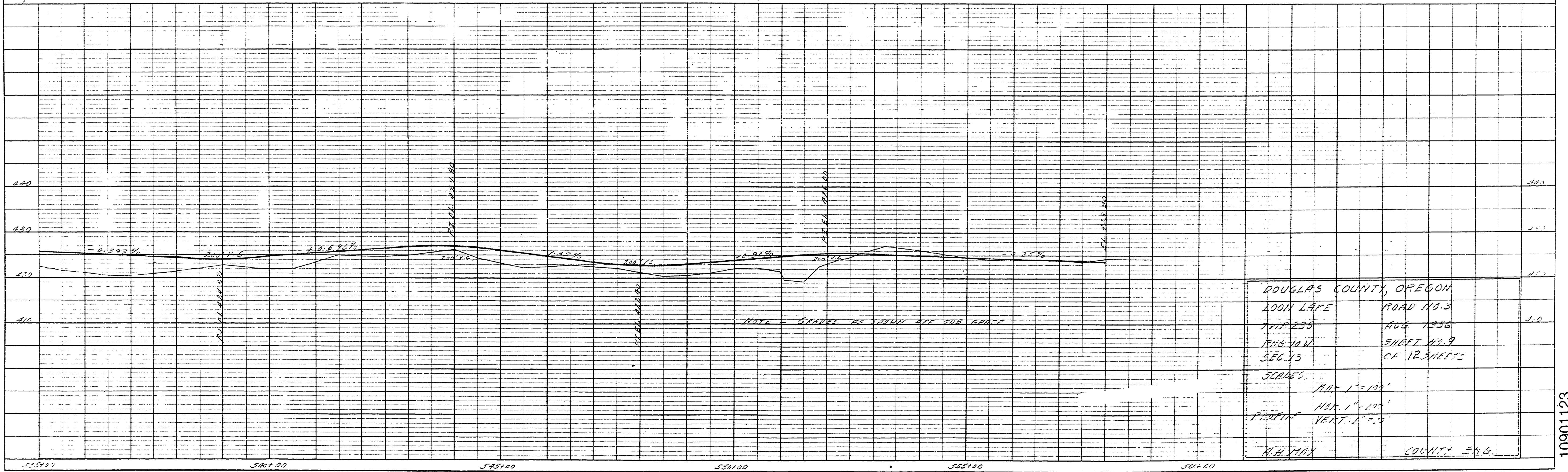


DALE W TOPPING
 DEAN M TOPPING
 BEVERLY J. TUCKER
 LAURELITE A. TOPPING
 251 / 45-466



DOUGLAS COUNTY, OREGON
 LOON LAKE ROAD NO. 3
 IMPRESS AVE. 1356
 1/4 NW 1/4 SEC. 13
 SHEET 12.9
 OF 12 SHEETS
 SCALES:
 MAX. 1" = 100'
 PLAN. 1" = 100'
 VERT. 1" = 5'
 A.H. MAX COUNTY ENG.

NOTE BOOK ALIGNMENT CHECKED
 RT. OF WAY CHECKED
 NO.

NOTE BOOK GRADES CHECKED
 B.M. NOTED
 ELEVATION DATA CHECKED
 NO.

PLATE 1-PLAN-PROFILE O.P.R. & R.E. STANDARD
 100% RAG PAPER MADE AND PRINTED IN U.S.A.
 EUGENE DIETZGEN CO.

M.P. 10-90-11-23

Rd # 3

12.9 of 12 sheets
 A. 19-26 25.9 12

10901123