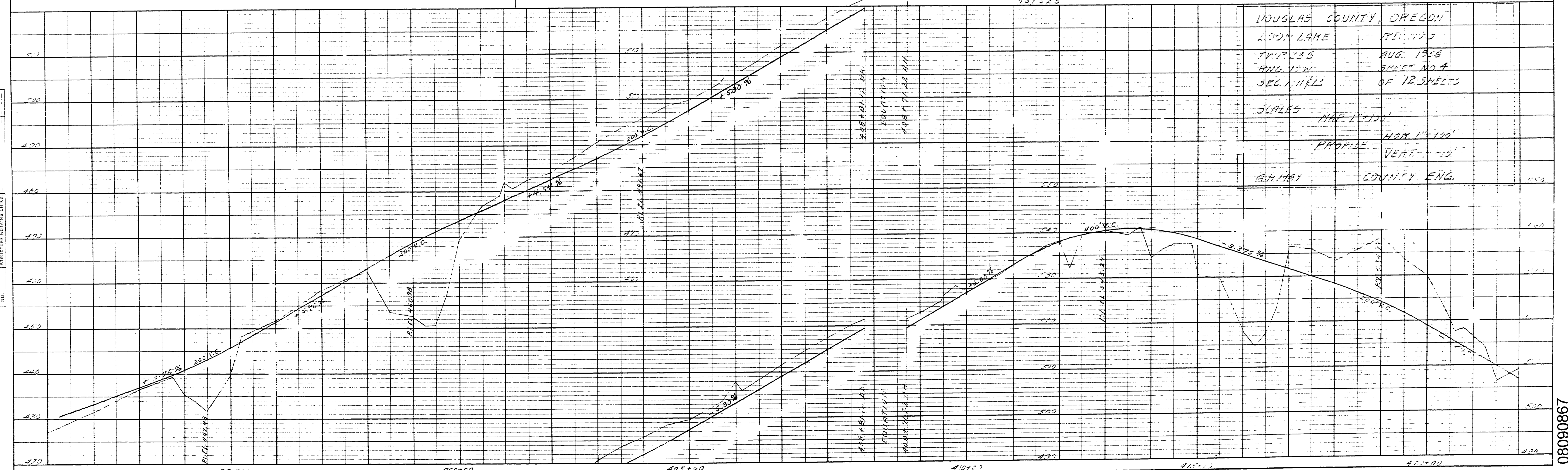
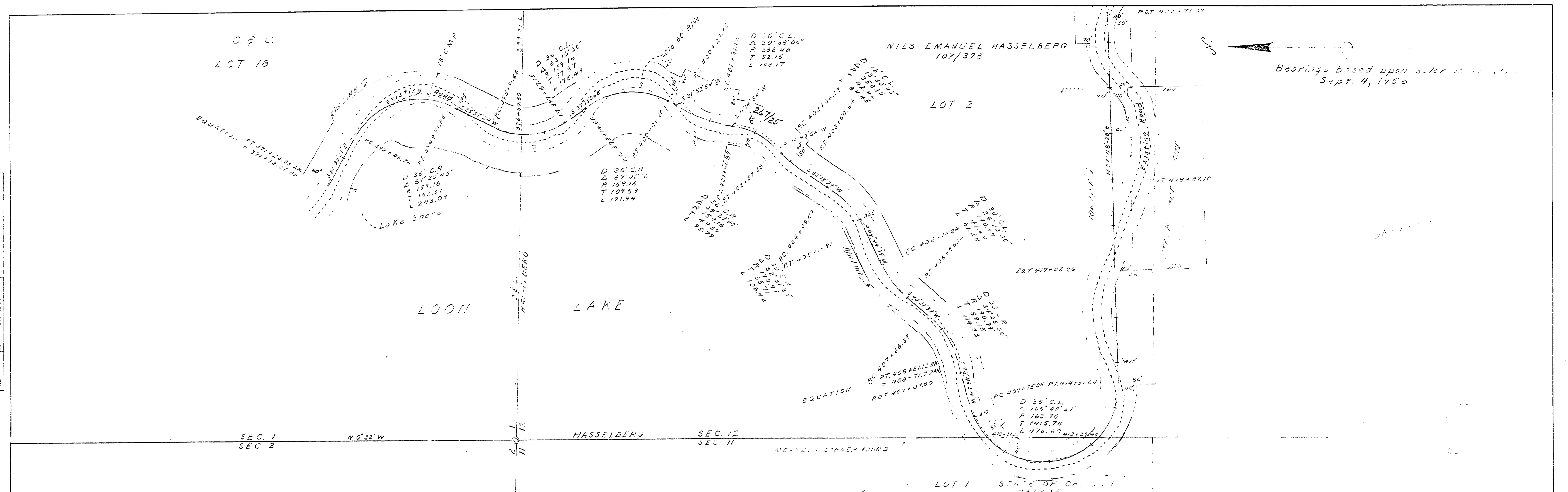


O.S.C.
LCT 18

Bearings based upon solar observations
Sept. 4, 1850



DOUGLAS COUNTY, OREGON
 LOON LAKE
 TRAP 335
 AUG. 1856
 SEC. 11, 12
 OF 12 SHEETS
 SCALES
 MAP 1"=100'
 PROFILE HOR 1"=120'
 VERT. 1"=10'
 A. H. MAY
 COUNTY ENG.

NOTE BOOK
 GRADES CHECKED
 BY
 SUBMITTED AND CHECKED
 NO.

NOTE BOOK
 GRADES CHECKED
 BY
 SUBMITTED AND CHECKED
 NO.

PLATE 1-PLAN-PROFILE O.P.R. & R.E. STANDARD
 100% RAD PAPER MADE AND PRINTED IN U. S. A.
 EUGENE DIETZGEN CO.

11.2.00-8.66

P. 11 3

4 12

198090867