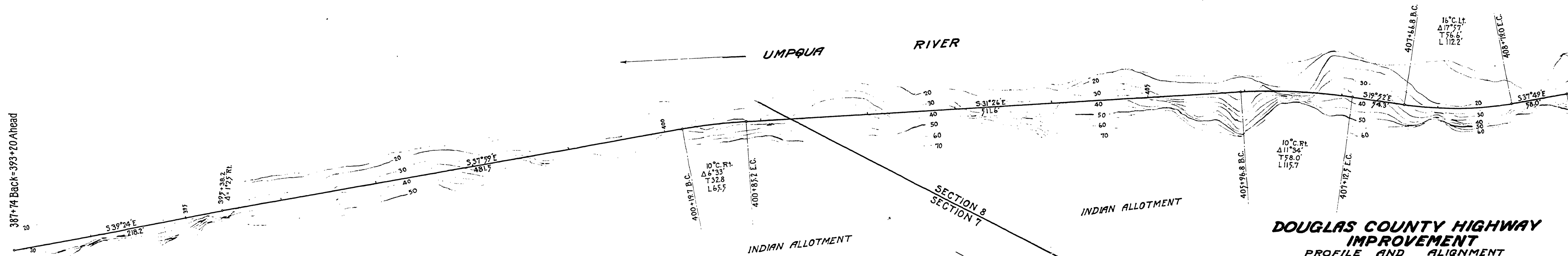


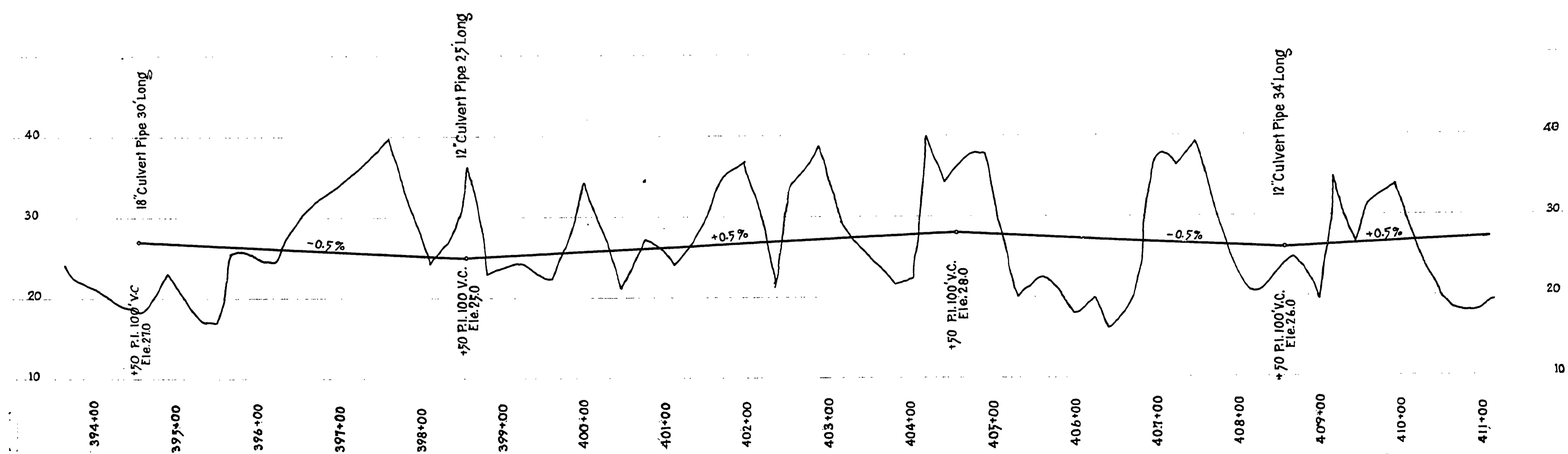
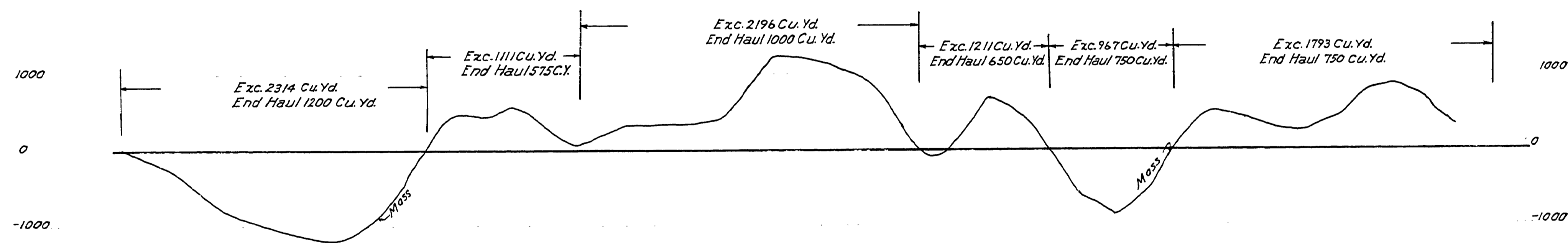
387+74 Back-393+20 Ahead



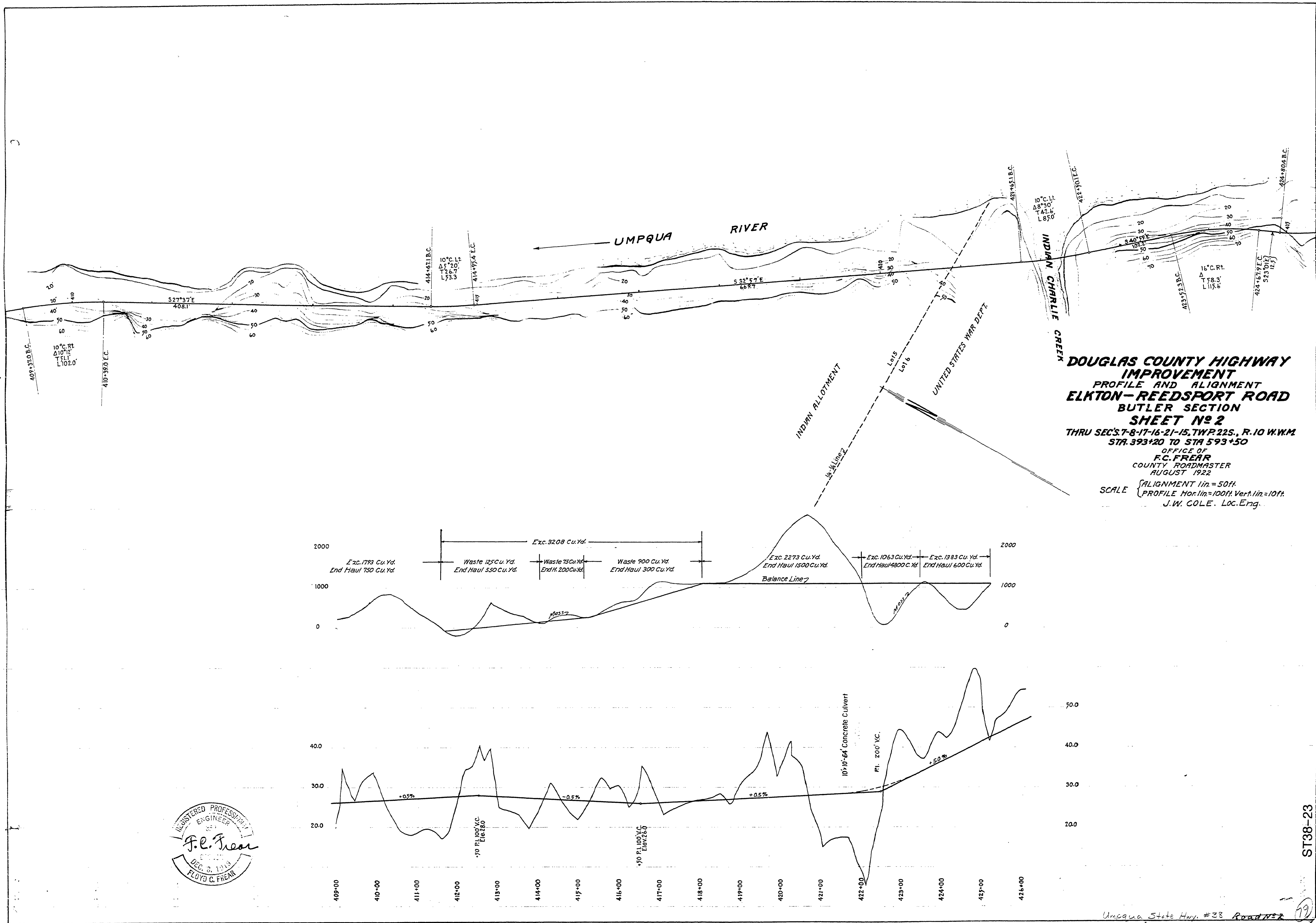
**DOUGLAS COUNTY HIGHWAY IMPROVEMENT**  
**PROFILE AND ALIGNMENT**  
**ELKTON-REEDSPORT ROAD**  
**BUTLER SECTION**  
**SHEET NO. 1**  
 THRU SEC'S. 7-8-17-16-21-15, TWP. 22S., R. 10 W.W.M.  
 STA. 393+20 TO STA. 593+50  
 OFFICE OF  
**F. C. FREAR**  
 COUNTY ROADMASTER  
 AUGUST 1922

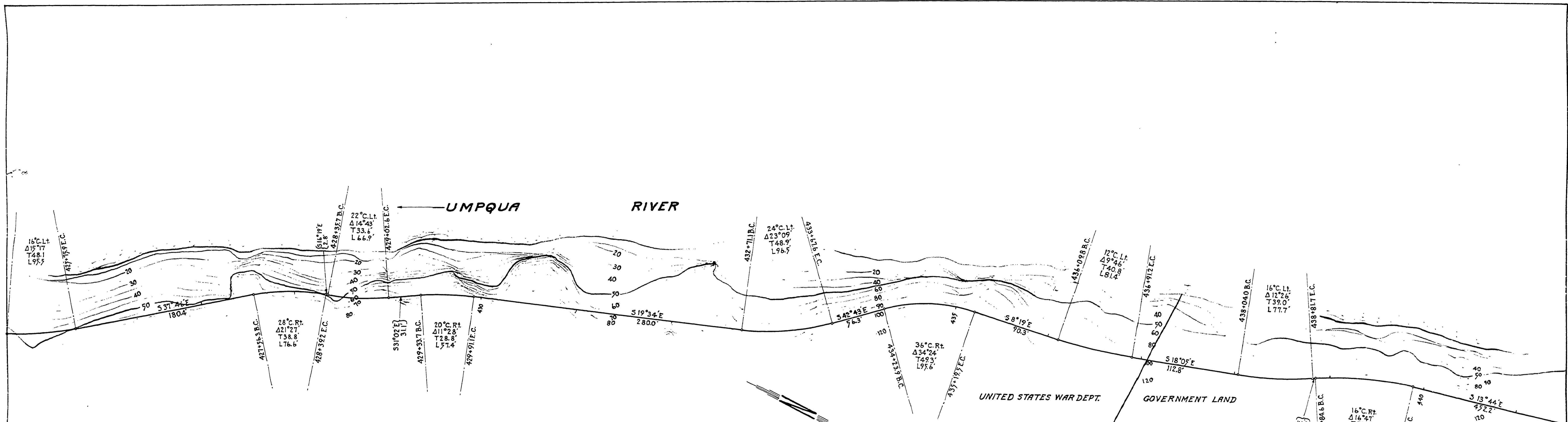
SCALE ALIGNMENT 1 in. = 50 ft.  
 PROFILE Hor. 1 in. = 100 ft. Vert. 1 in. = 10 ft.

J. W. COLE, Loc. Eng.



ST38-22





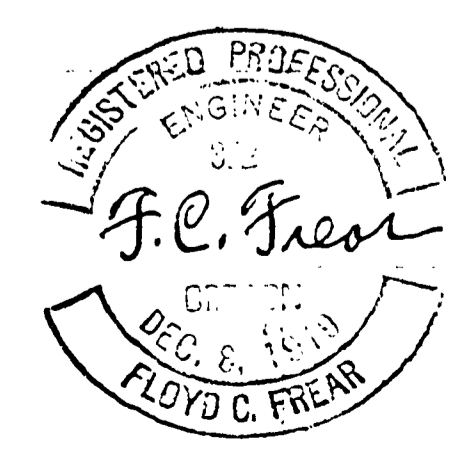
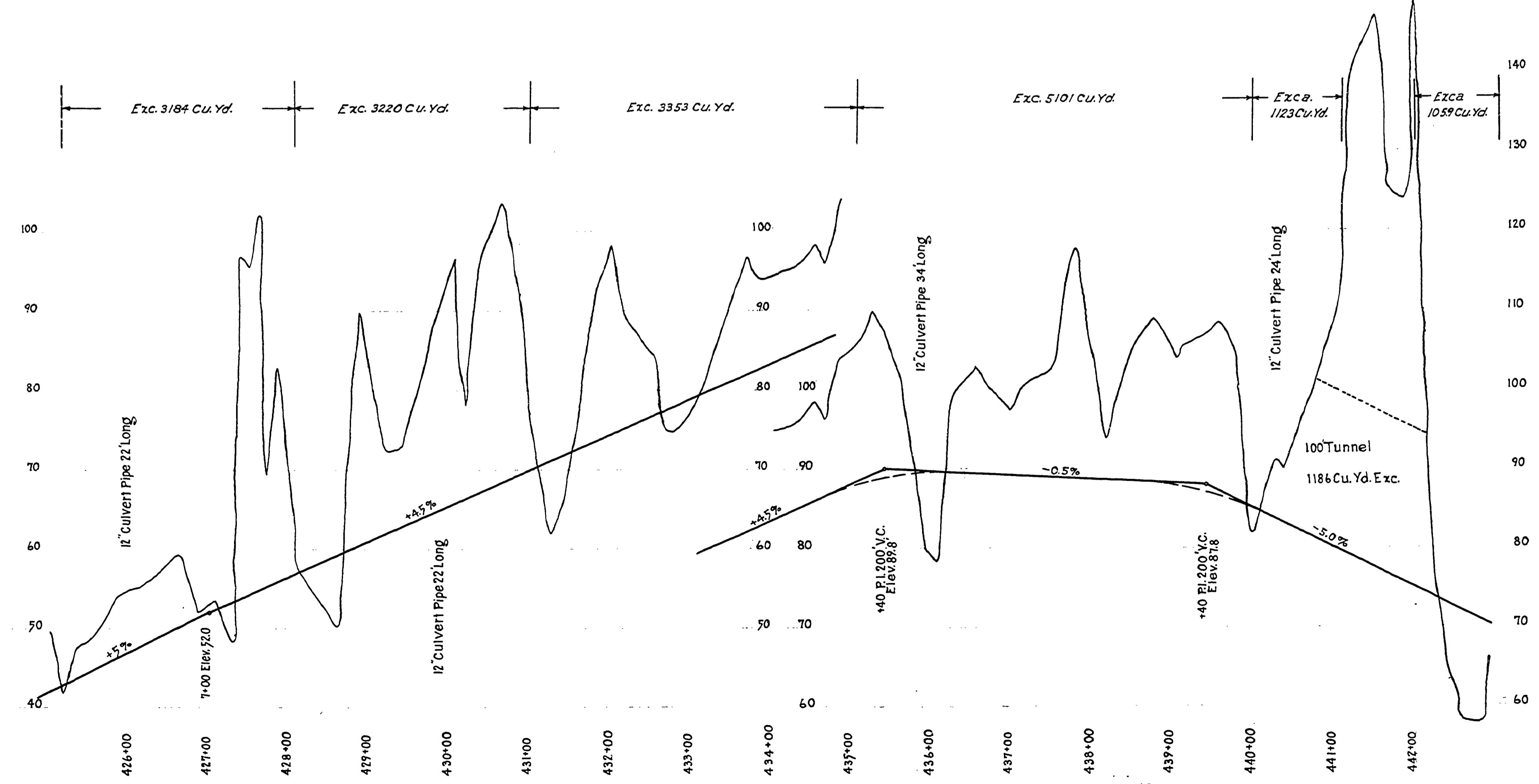
UNITED STATES WAR DEPT. GOVERNMENT LAND

**DOUGLAS COUNTY HIGHWAY IMPROVEMENT**  
**PROFILE AND ALIGNMENT**  
**ELKTON-REEDSPORT ROAD**  
**BUTLER SECTION**  
**SHEET No 3**  
 THRU SEC'S. 7-8-17-16-21-15, TWP. 22S., R. 10W.W.M.  
 STA. 393+20 TO STA. 593+50

OFFICE OF  
**F.C. FREAR**  
 COUNTY ROADMASTER  
 AUGUST 1922

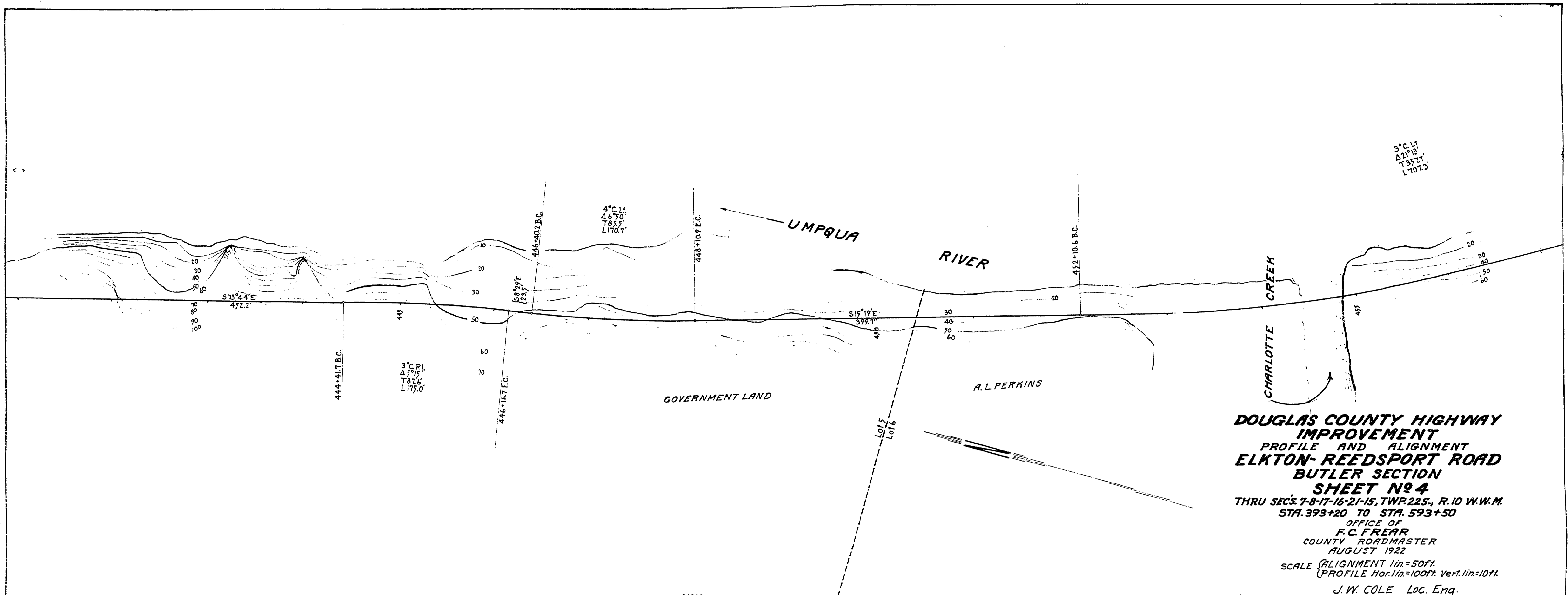
SCALE (ALIGNMENT 1 in = 50 ft.)  
 (PROFILE Hor. 1 in = 100 ft. Vert. 1 in = 10 ft.)

J. W. COLE, Loc. Eng.

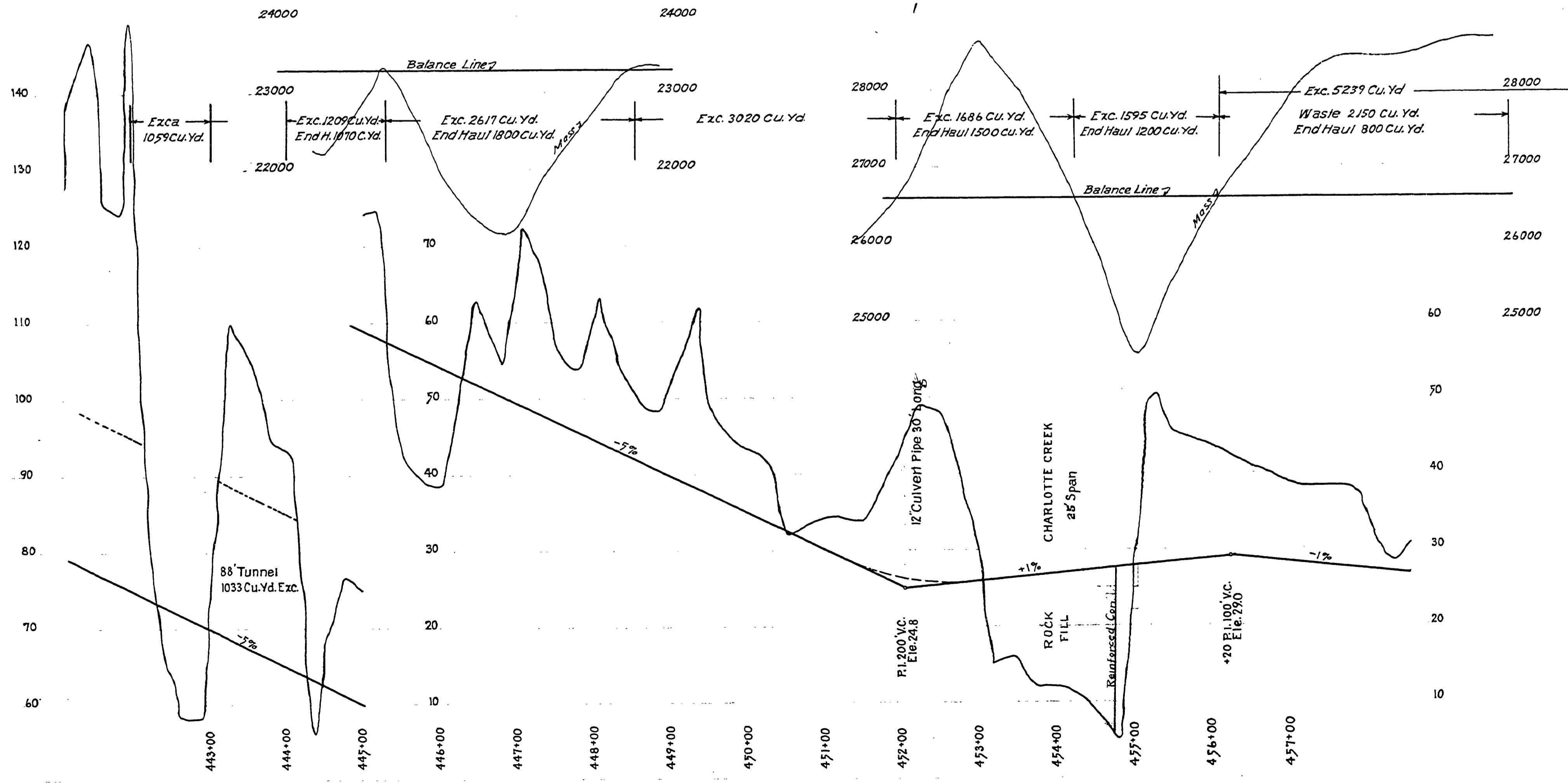


ST38-24

3° C. L1  
 Δ2° P13  
 T37° L4  
 L707.3



**DOUGLAS COUNTY HIGHWAY IMPROVEMENT**  
 PROFILE AND ALIGNMENT  
**ELKTON-REEDSPORT ROAD**  
 BUTLER SECTION  
**SHEET No 4**  
 THRU SEC'S 7-8-17-16-21-15, TWP. 22S., R. 10 W.W.M.  
 STA. 393+20 TO STA. 593+50  
 OFFICE OF  
**F.C. FREAR**  
 COUNTY ROADMASTER  
 AUGUST 1922  
 SCALE (ALIGNMENT 1 in. = 50 ft.)  
 (PROFILE Hor. lin. = 100 ft. Vert. lin. = 10 ft.)  
 J.W. COLE Loc. Eng.

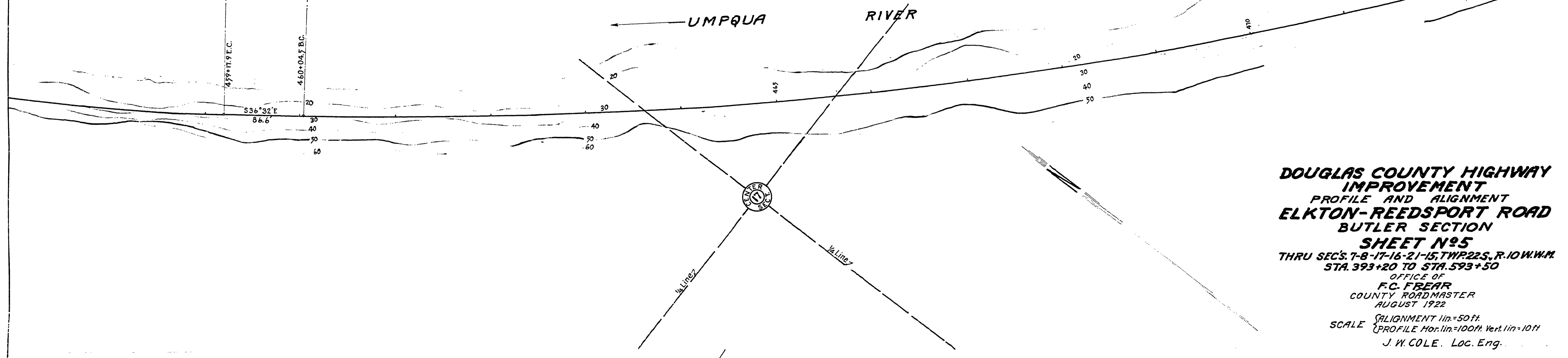


Umpqua State Hwy. #38 Road No 2  
 Aug. 1922 sheet 4 of 13

ST38-25

3° C. L.  
427.15  
737.17  
L707.3

1° 15' C. L.  
422° 38'  
7917.1  
L1810.4

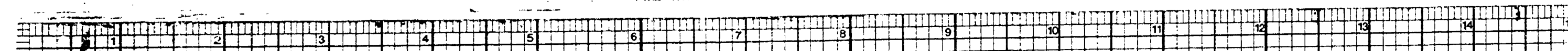


**DOUGLAS COUNTY HIGHWAY IMPROVEMENT**  
**PROFILE AND ALIGNMENT**  
**ELKTON-REEDSPORT ROAD**  
**BUTLER SECTION**  
**SHEET No 5**  
 THRU SEC'S 7-8-17-16-21-15, TWP. 22 S., R. 10 W. W.M.  
 STA. 393+20 TO STA. 593+50  
 OFFICE OF  
**F.C. FEAR**  
 COUNTY ROADMASTER  
 AUGUST 1922  
 SCALE: ALIGNMENT 1 in = 50 ft  
 PROFILE Hor. lin = 100 ft. Vert. lin = 10 ft  
 J. W. COLE. Loc. Eng.



ST38-26

Umpqua State Hwy. #38 Road No. 22  
 Aug. 1922 SHE. 5 of 13



1°15' C. L.  
 Δ22°38'  
 T917.4  
 L1810.4

UMPQUA RIVER

478+16.9 E.C.

S 59°10' E  
 902.2

48+17.1 B.C.

2° C. R1  
 Δ4°26'  
 T110.9  
 L221.6

A.L. PERKINS

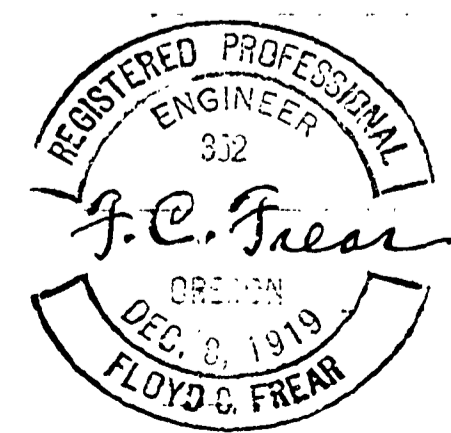
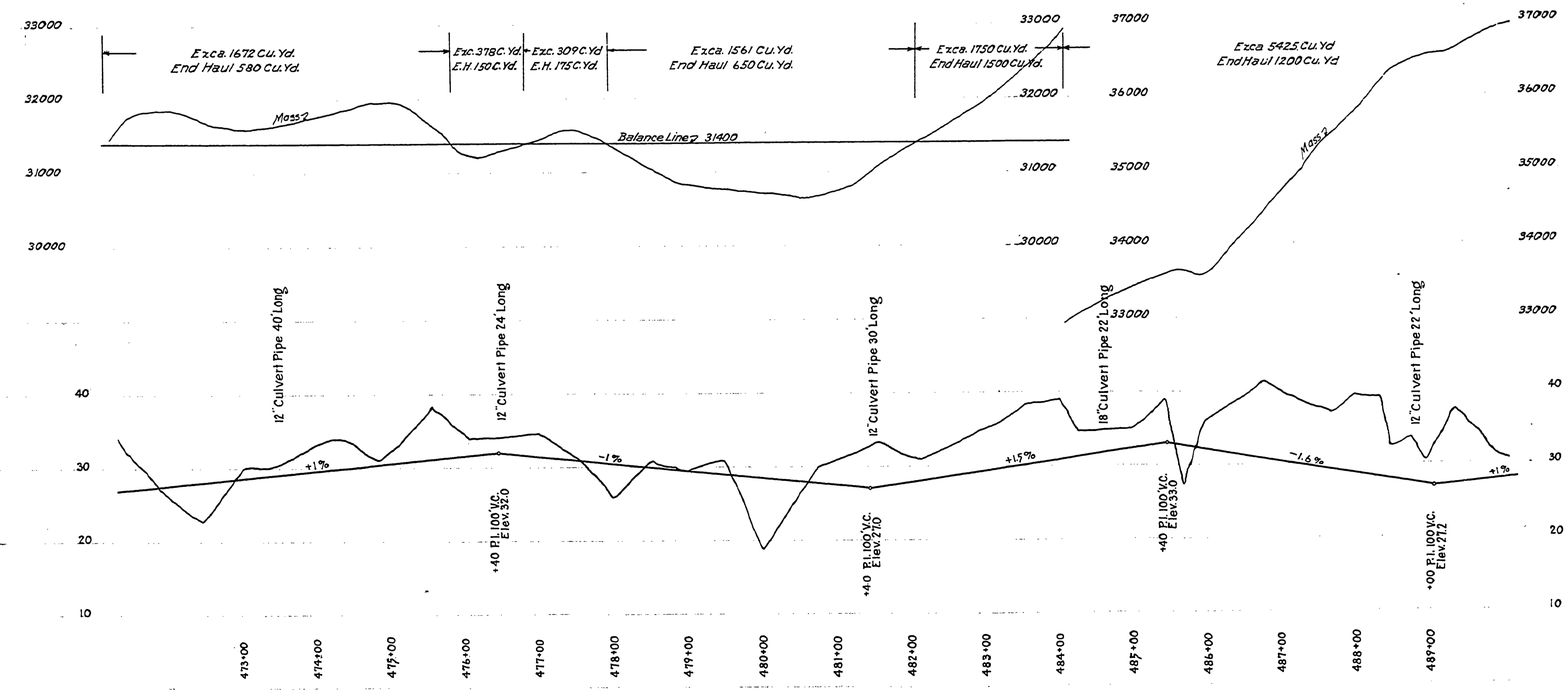
**DOUGLAS COUNTY HIGHWAY  
 IMPROVEMENT  
 PROFILE AND ALIGNMENT  
 ELKTON-REEDSPORT ROAD  
 BUTLER SECTION  
 SHEET NO. 6**

THRU SEC'S. 7-8-17-16-21-15, TWP. 22S., R. 10W.W.M.  
 STA. 393+20 TO STA. 593+50

OFFICE OF  
**F. C. FREAR**  
 COUNTY ROADMASTER  
 AUGUST 1922

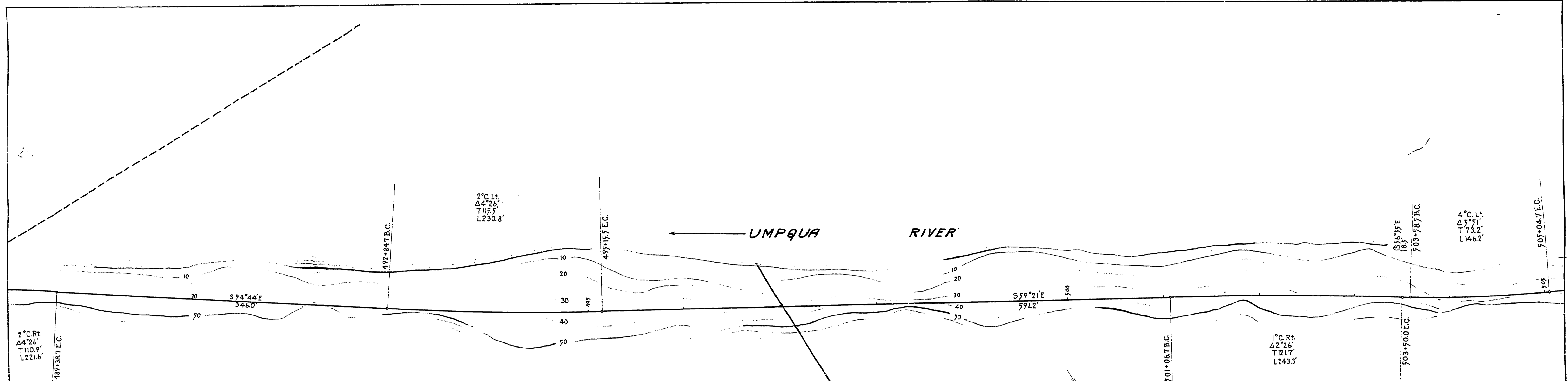
SCALE: ALIGNMENT 1 in. = 50 ft.  
 PROFILE Hor. 1 in. = 100 ft. Vert. 1 in. = 10 ft.

J. W. COLE Loc. Eng.



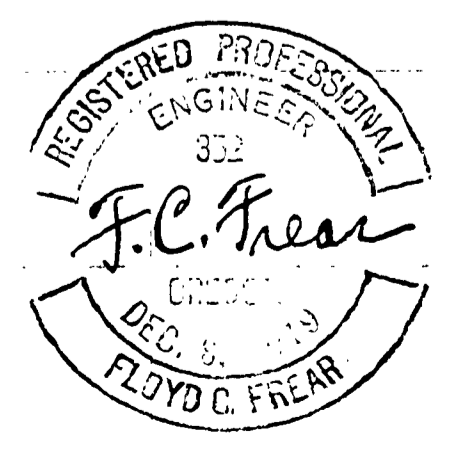
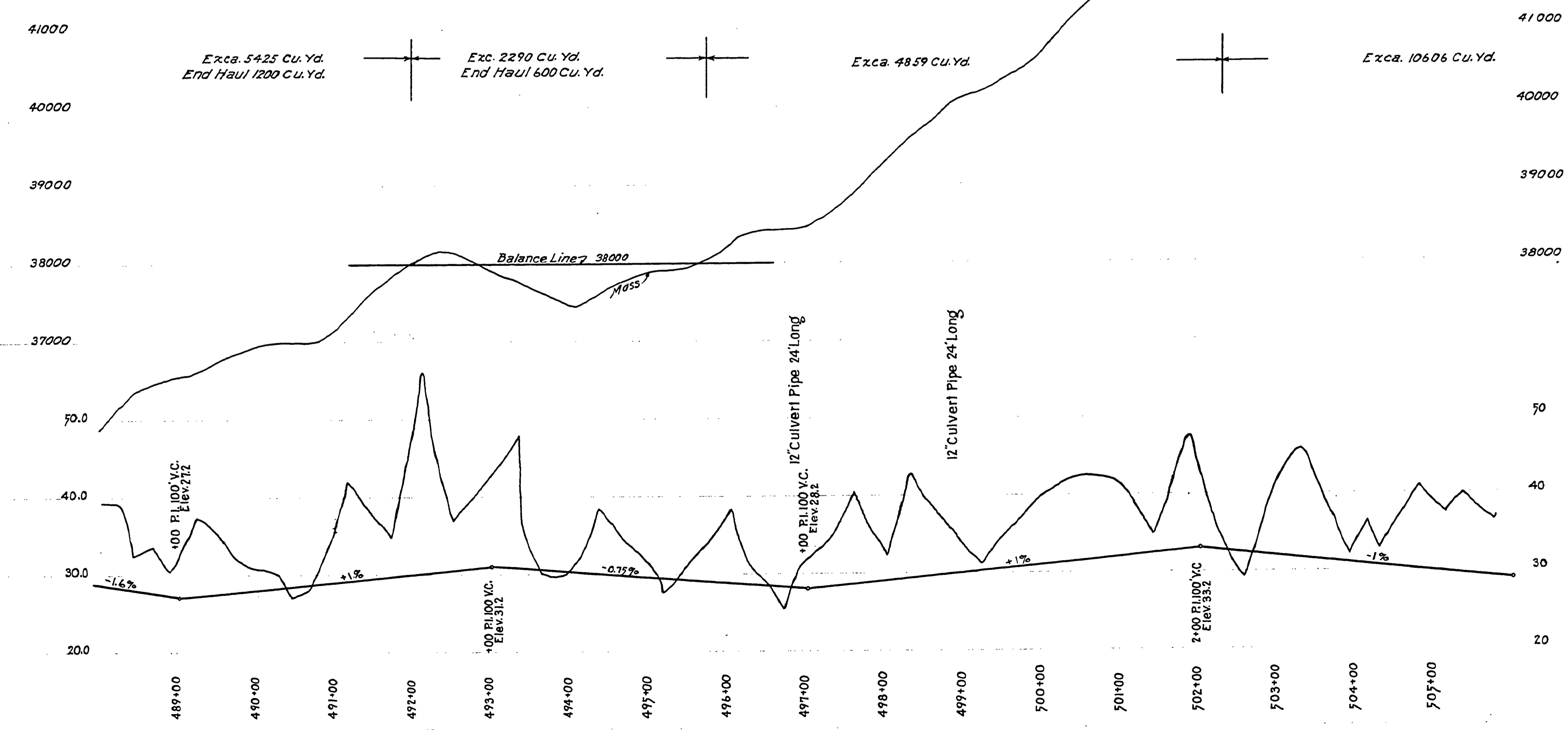
ST38-27

Umpqua State Hwy #38 Road No. 2  
 Aug 1922 Sht. 6 of 13



**DOUGLAS COUNTY HIGHWAY IMPROVEMENT**  
**PROFILE AND ALIGNMENT**  
**ELKTON-REEDSPORT ROAD**  
**BUTLER SECTION**  
**SHEET NO 7**  
 THRU SEC'S. 7-8-17-16-21-15, TWP. 22S, R. 10W, W.M.  
 STA. 393+20 TO STA. 593+50  
 OFFICE OF  
**F.C. FREAR**  
 COUNTY ROADMASTER  
 AUGUST 1922

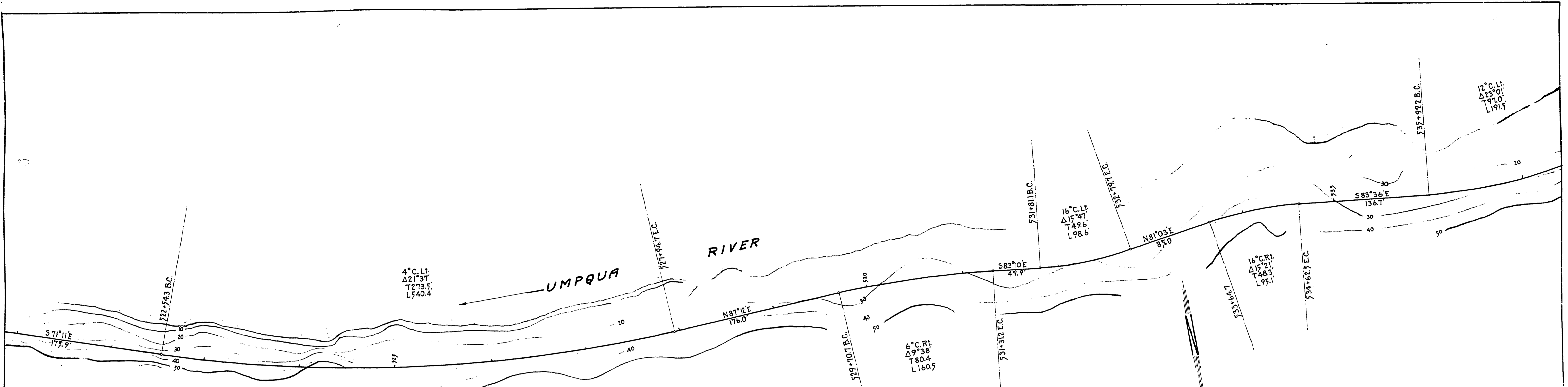
SCALE (ALIGNMENT 1 in. = 50 ft.)  
 (PROFILE Hor. 1 in. = 100 ft. Vert. 1 in. = 10 ft.)  
 J.W. COLE Loc. Eng.



ST38-28

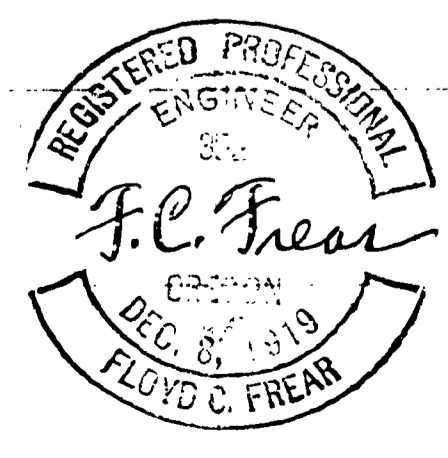
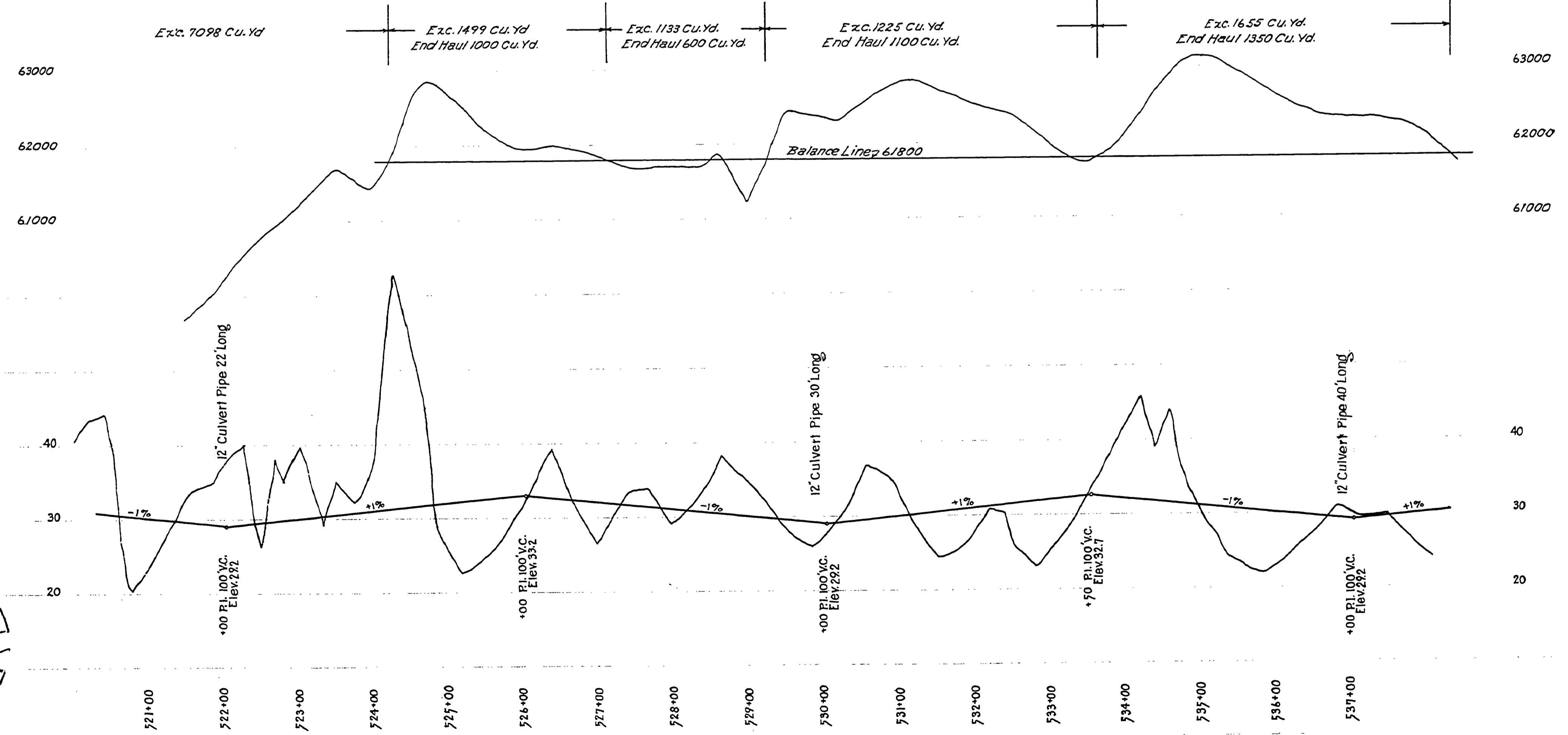
Umpqua State Hwy. #38 Road No. 2  
 Aug. 1922 Sh. 7 of 13





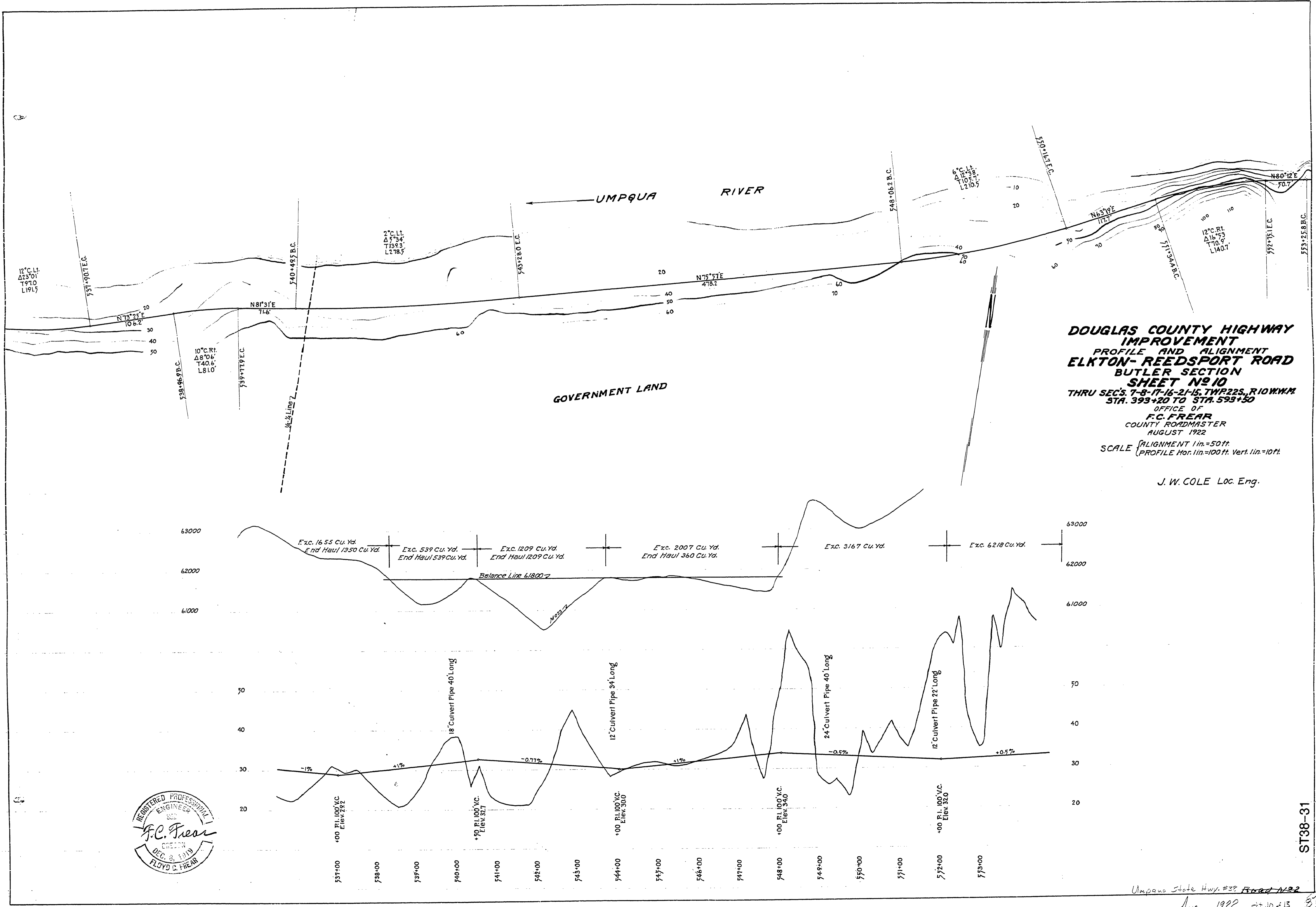
**DOUGLAS COUNTY HIGHWAY IMPROVEMENT**  
**PROFILE AND ALIGNMENT**  
**ELKTON-REEDSPORT ROAD**  
**BUTLER SECTION**  
**SHEET NO 9**  
 THRU SEC'S 7-8-17-16-21-15, TWP 22S., R10W.W.M.  
 STA. 393+20 TO STA. 593+50  
 OFFICE OF  
**F.C. FREAR**  
 COUNTY ROADMASTER  
 AUGUST 1922  
 SCALE { ALIGNMENT 1 in. = 50 ft.  
 PROFILE Hor. 1 in. = 100 ft. Ver. 1 in. = 10 ft.

J. W. COLE Loc. Eng.



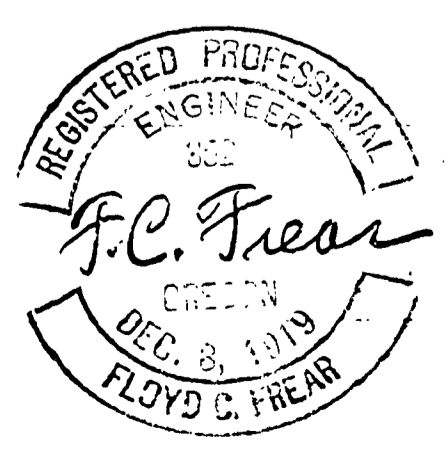
ST38-30

Umpqua State Hwy. #38 Road No. 2 (80)  
 Aug. 1922 sh. 9 of 13



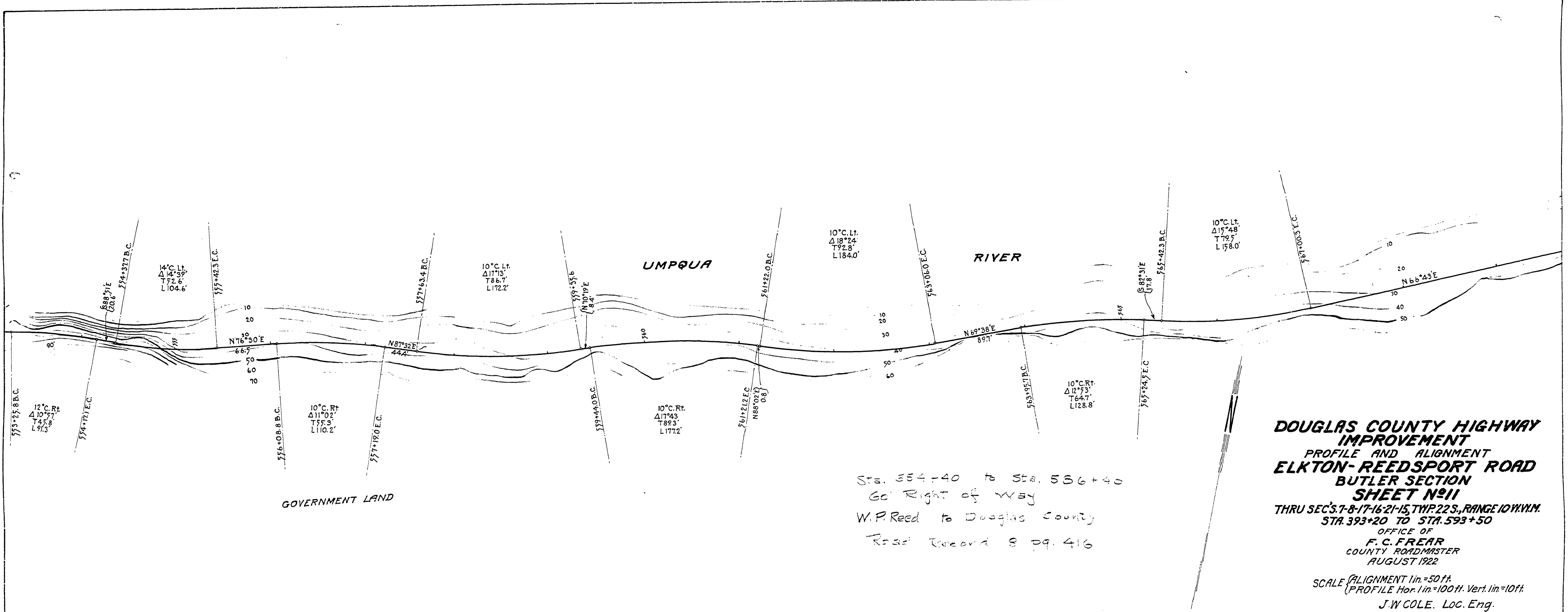
**DOUGLAS COUNTY HIGHWAY IMPROVEMENT**  
**PROFILE AND ALIGNMENT**  
**ELKTON-REEDSPORT ROAD**  
**BUTLER SECTION**  
**SHEET NO 10**  
 THRU SEC'S 7-8-17-16-21-15, TWP 22S, R 10W W.M.  
 STA. 393+20 TO STA. 593+50  
 OFFICE OF  
**F.C. FREAR**  
 COUNTY ROADMASTER  
 AUGUST 1922  
 SCALE (ALIGNMENT 1 in. = 50 ft.)  
 (PROFILE Hor. 1 in. = 100 ft. Vert. 1 in. = 10 ft.)

J. W. COLE Loc. Eng.



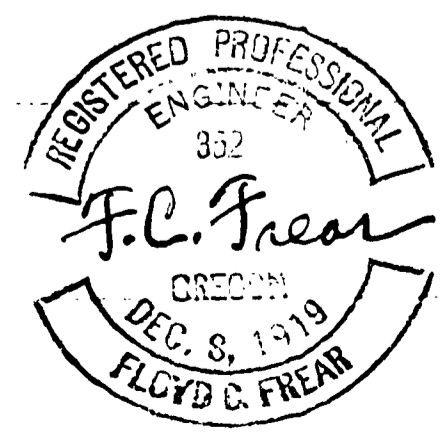
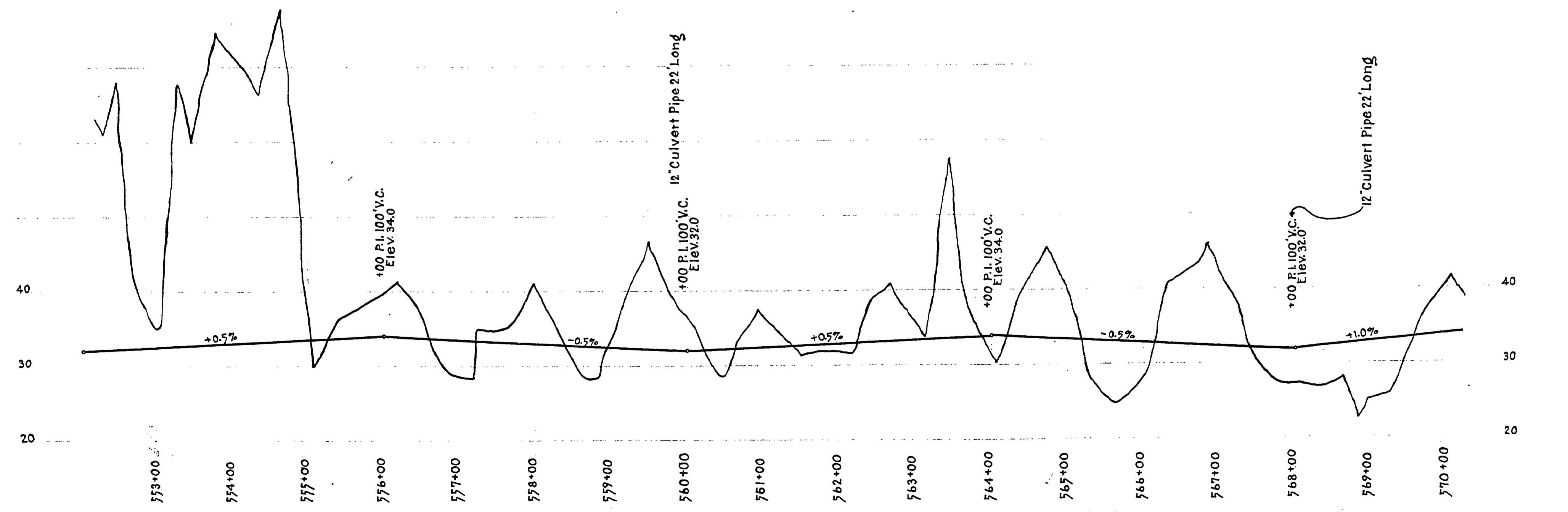
ST38-31

Umpqua State Hwy. #33 Road No. 2  
 Aug. 1922 Sit 10 of 13



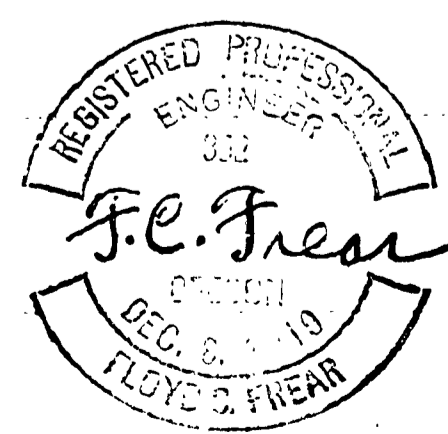
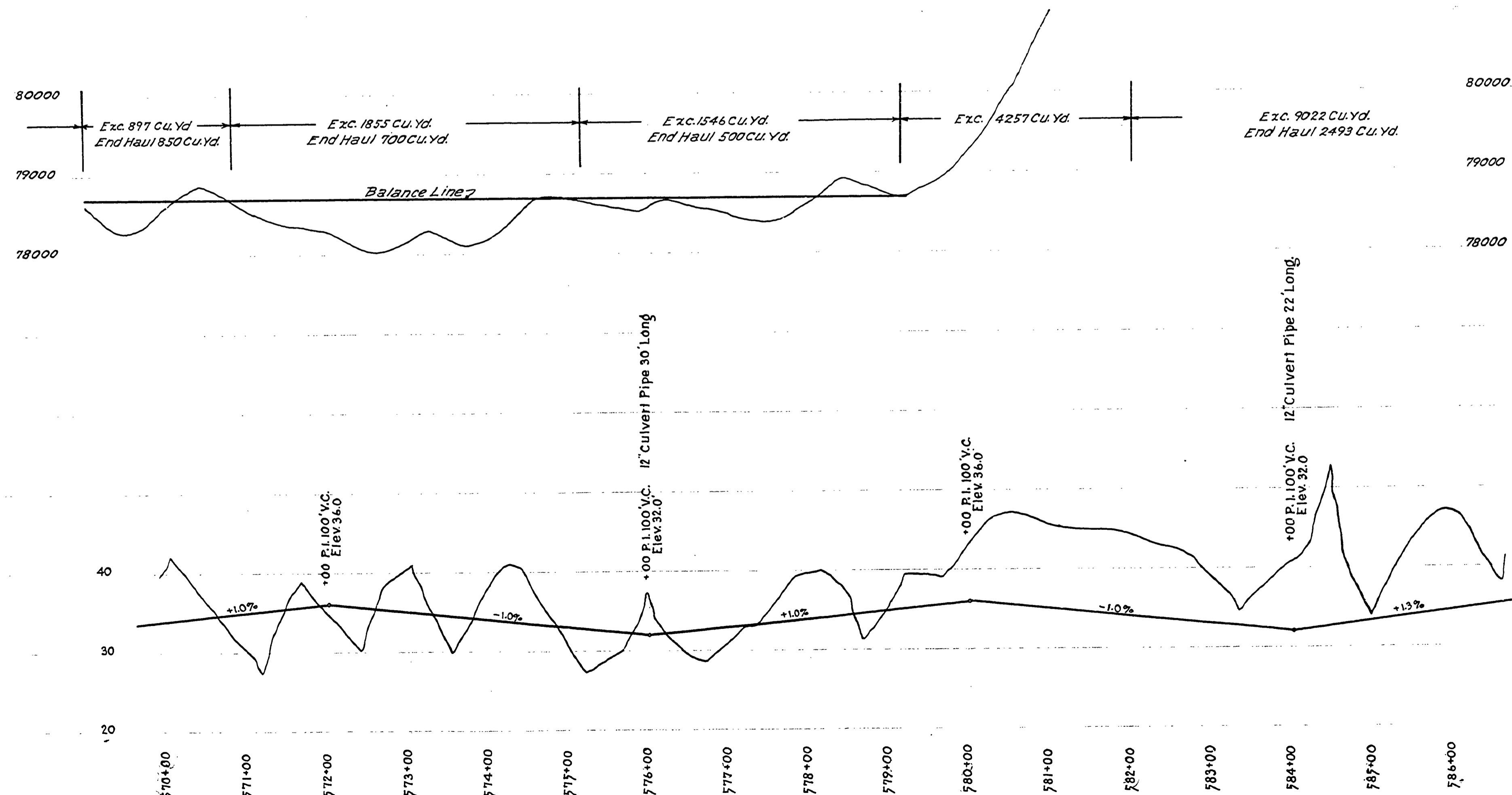
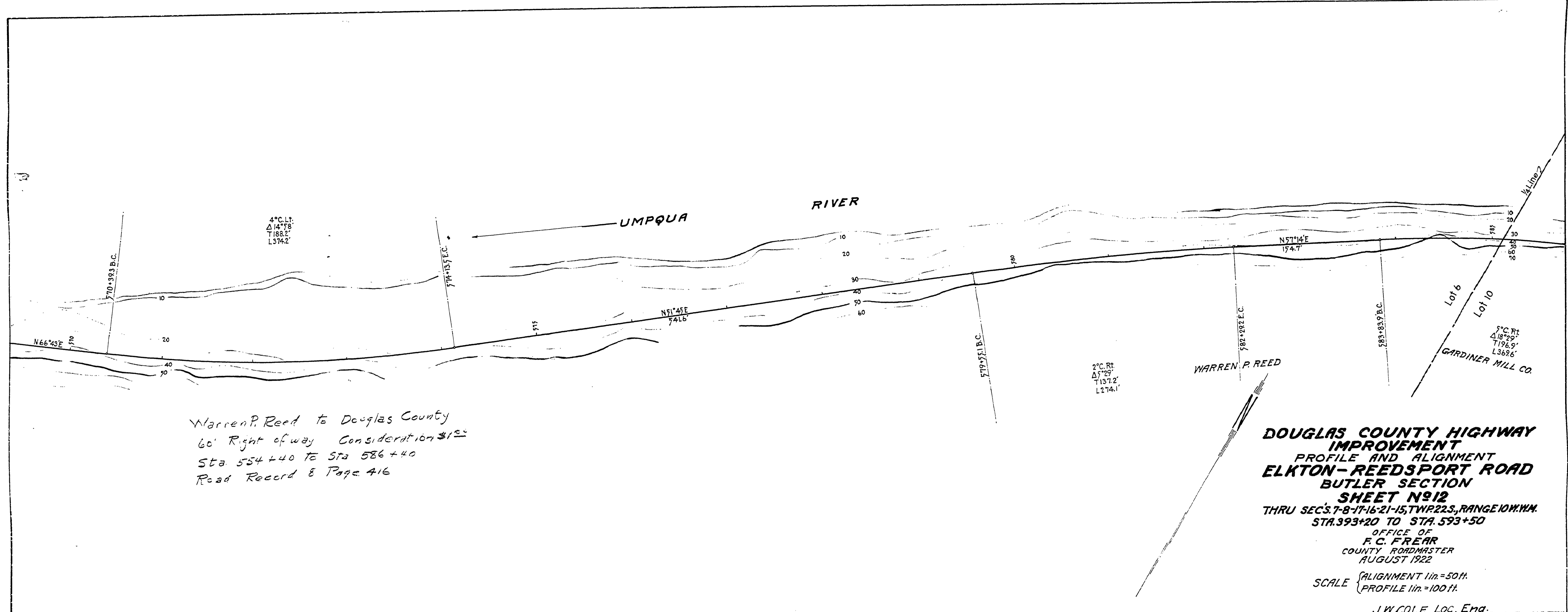
**DOUGLAS COUNTY HIGHWAY IMPROVEMENT**  
 PROFILE AND ALIGNMENT  
**ELKTON-REEDSPORT ROAD BUTLER SECTION**  
**SHEET No. 11**  
 THRU SEC'S 7-8-17-16-21-15, TWP. 22 S., RANGE 10 W. 11 W. M.  
 STA. 393+20 TO STA. 593+50  
 OFFICE OF  
**F. C. FREAR**  
 COUNTY ROADMASTER  
 AUGUST 1922  
 SCALE ALIGNMENT 1 in. = 50 ft.  
 PROFILE Hor. 1 in. = 100 ft. Vert. 1 in. = 10 ft.  
 J. W. COLE, Loc. Eng.

Sta. 554+40 to Sta. 556+40  
 Go Right of Way  
 W.P. Reed to Douglas County  
 Road Record 8 pg. 416

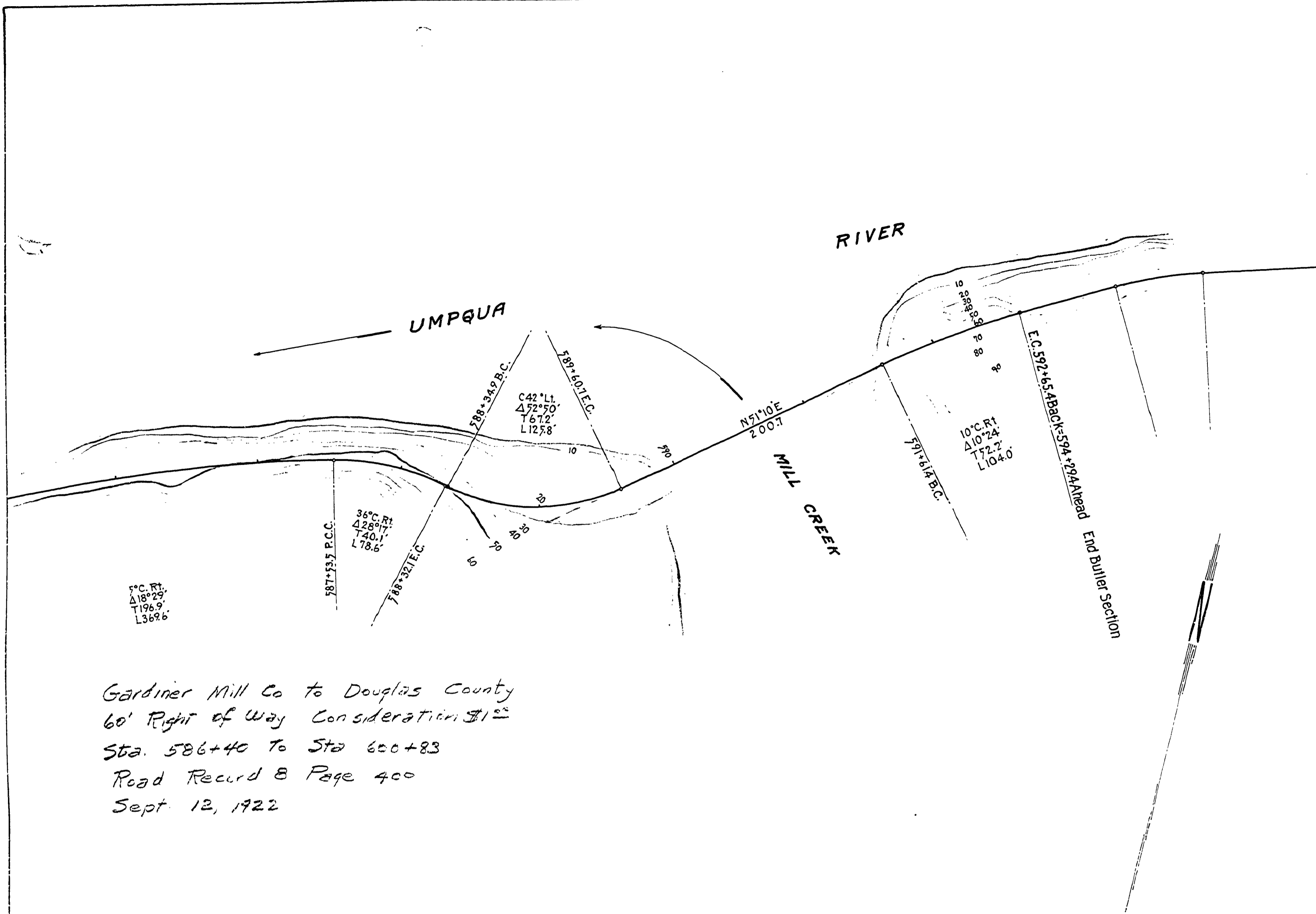


Umpqua State Hwy. #38  
 Aug. 1922  
 Sit. 11 of 13

ST38-32



ST38-33



Gardiner Mill Co to Douglas County  
 60' Right of Way Consideration \$15  
 Sta. 586+40 to Sta 600+83  
 Road Record B Page 400  
 Sept 12, 1922

**SUMMARY**

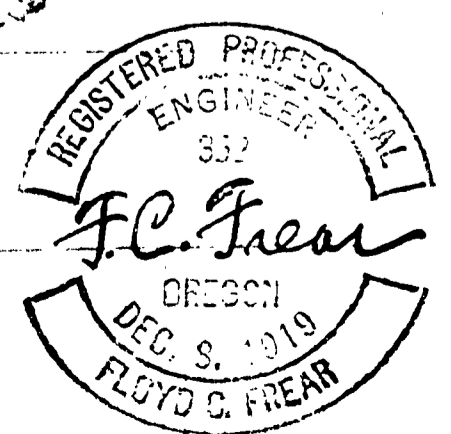
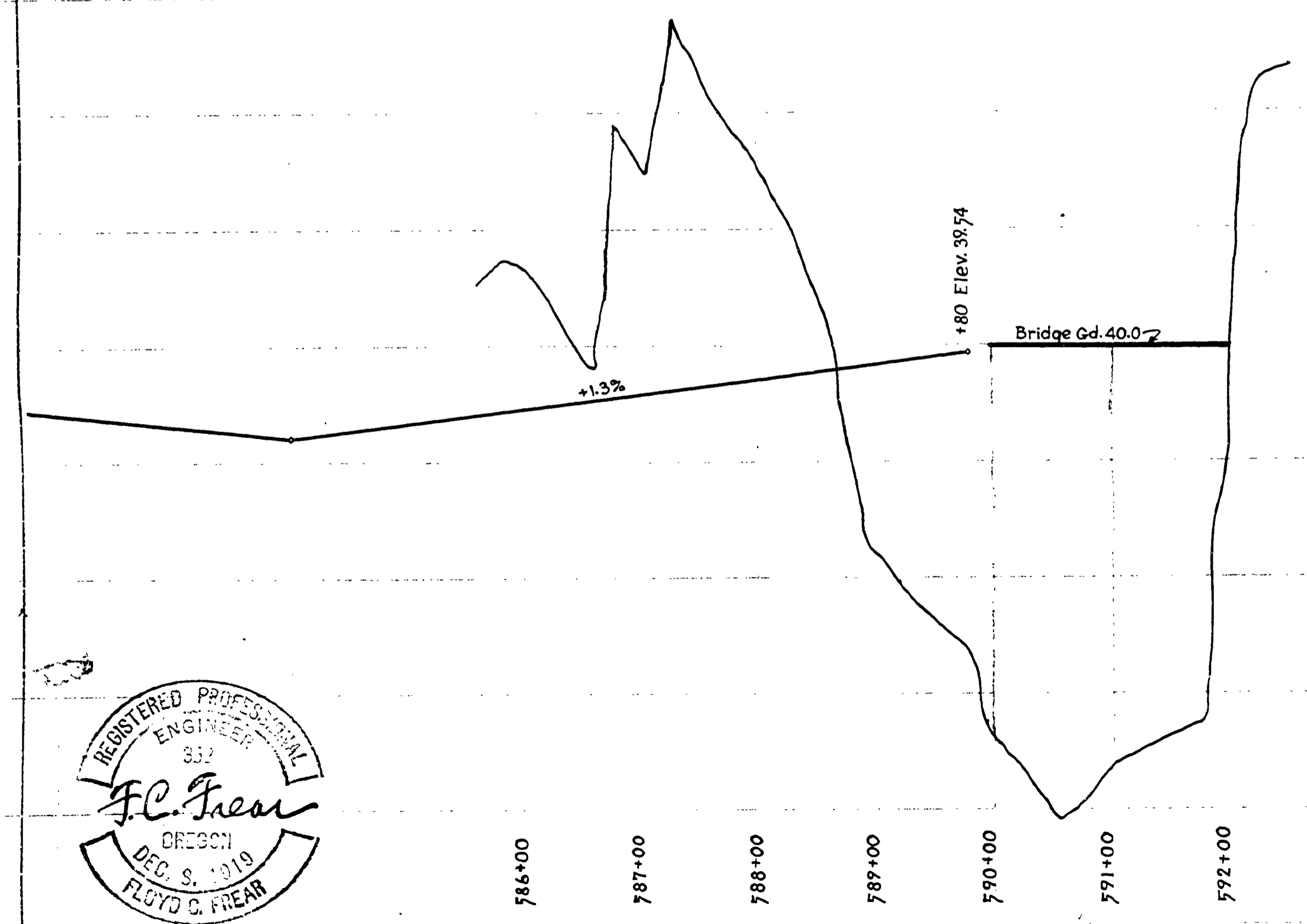
ITEM	UNIT	MILE				TOTAL QUANTITIES
		1	2	3	4 out of mile %6	
Clearing & Grubbing	Acres	7.3	7.3	7.3		21.2
Excavation Common	Cu.Yd.	1000	1000	1000	1000	4000
Excavation Intermediate	Cu.Yd.	12000	8703	18722	17041	53868
Excavation Solid Rock	Cu.Yd.	25257	22366	15821	17430	80872
Overhaul	Sta.Yd.	1000	1000	1000	500	3500
12" Culvert Pipe Concrete	Lin. ft.	166	244	194	118	722
18" - - -	- - -	55	22	40		117
24" - - -	- - -			40		40
Concrete Class A	Cu.Yd.	260		150		410
Reinforcing (Walls)	Lbs.	4000		1000		5000
Guard Fence	Lin.ft.	300				300
Tunnel	Lin.ft.	188				188
Rubble Wall	Cu.Yd.	1000		1717	329	3046
Dry Wall	Cu.Yd.	1021	322	1000	1000	3343
Bridge 225ft. Span	Lump				225	225
Lumber and Timber	M B M	3000	5000		7000	15000

**DOUGLAS COUNTY HIGHWAY IMPROVEMENT**  
 PROFILE AND ALIGNMENT  
**ELKTON-REEDSPORT ROAD**  
**BUTLER SECTION**  
**SHEET No 13**  
 THRU SEC. 8-17-16-21-15, TWP 22 S., RANGE 10 W. 11 M.  
 STA. 393+20 TO STA. 593+50  
 OFFICE OF  
**F.C. FREAR**  
 COUNTY ROADMASTER  
 AUGUST 1922

SCALE (ALIGNMENT 1 in. = 50 ft.  
 PROFILE Hor. 1 in. = 100 ft. Ver. 1 in. = 10 ft.)

J. W. COLE Loc. Eng.

Exc. 9022 Cu. Yd.  
 End Haul 2493 Cu. Yd.



ST38-34