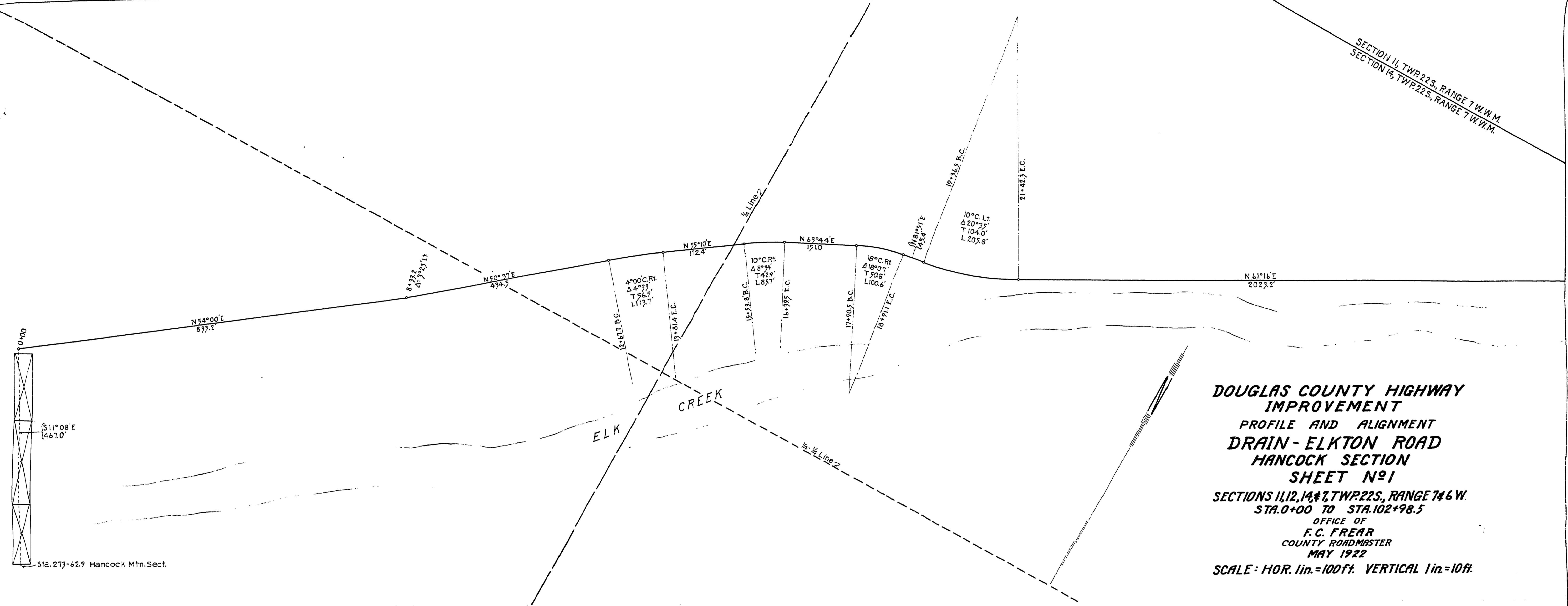
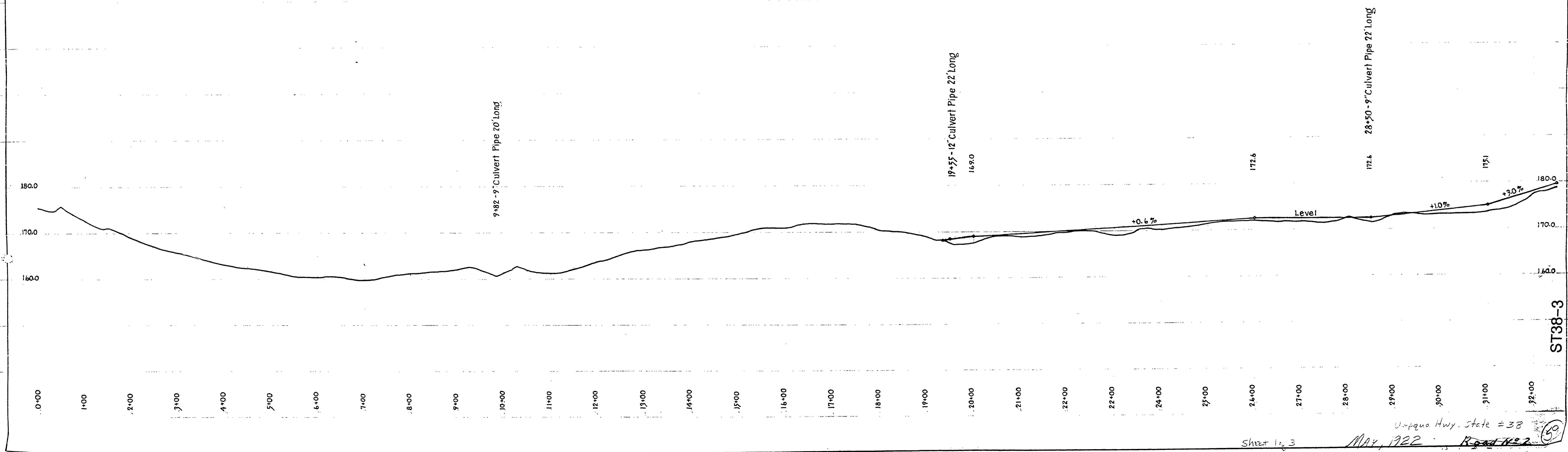


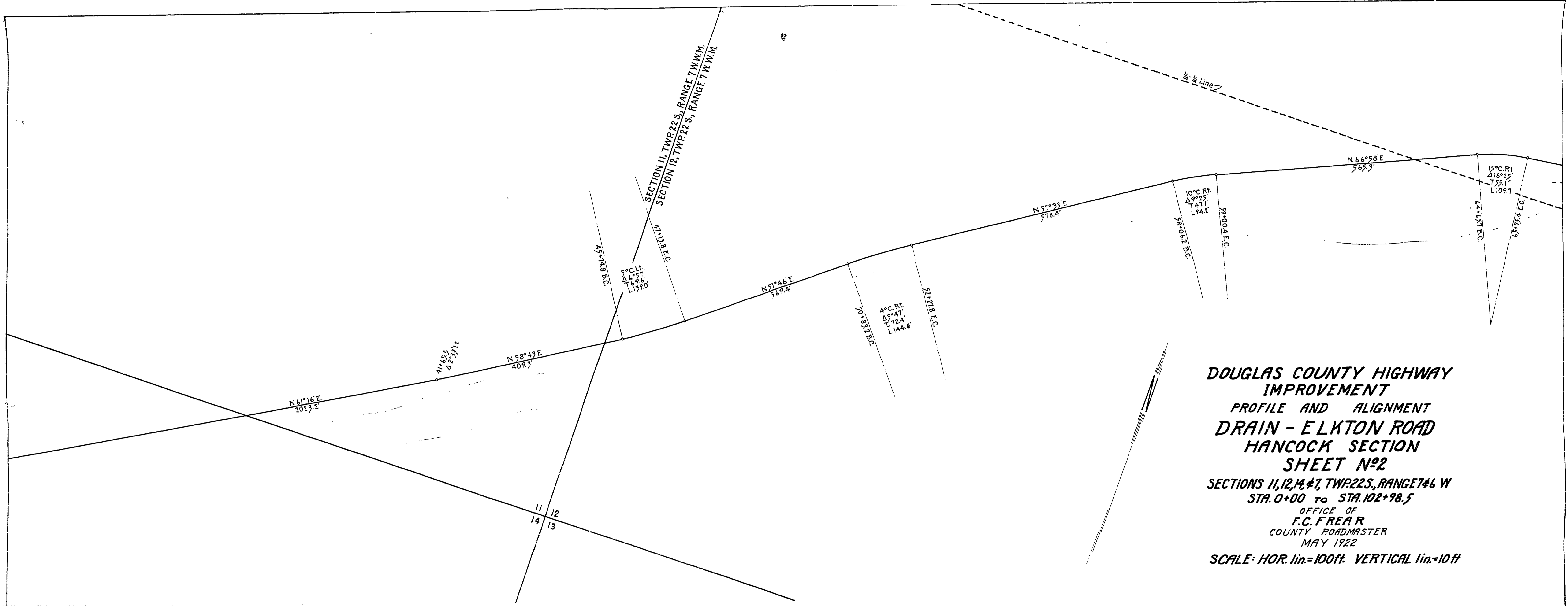
SECTION 11, TWP 22 S., RANGE 7 W. W. M.  
SECTION 14, TWP 22 S., RANGE 7 W. W. M.



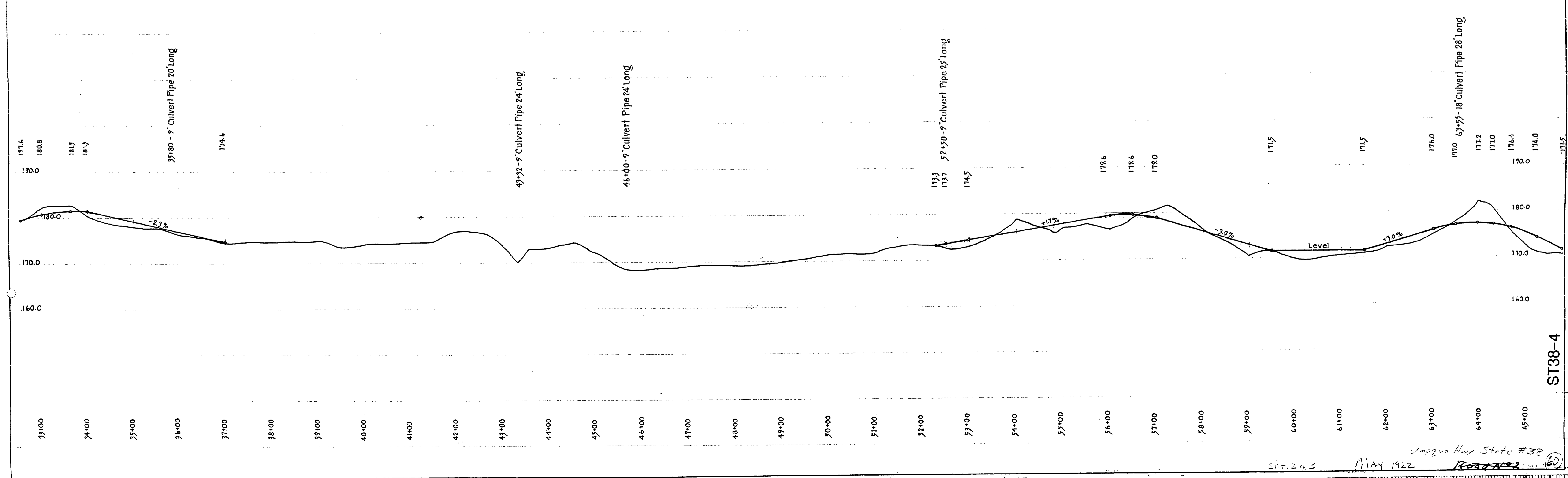
**DOUGLAS COUNTY HIGHWAY IMPROVEMENT**  
**PROFILE AND ALIGNMENT**  
**DRAIN-ELKTON ROAD**  
**HANCOCK SECTION**  
**SHEET NO 1**  
 SECTIONS 11, 12, 14, 17, TWP 22 S., RANGE 7 W. W. M.  
 STA. 0+00 TO STA. 102+98.5  
 OFFICE OF  
**F. C. FREAR**  
 COUNTY ROADMASTER  
 MAY 1922  
 SCALE: HOR. 1 in. = 100 ft. VERTICAL 1 in. = 10 ft.

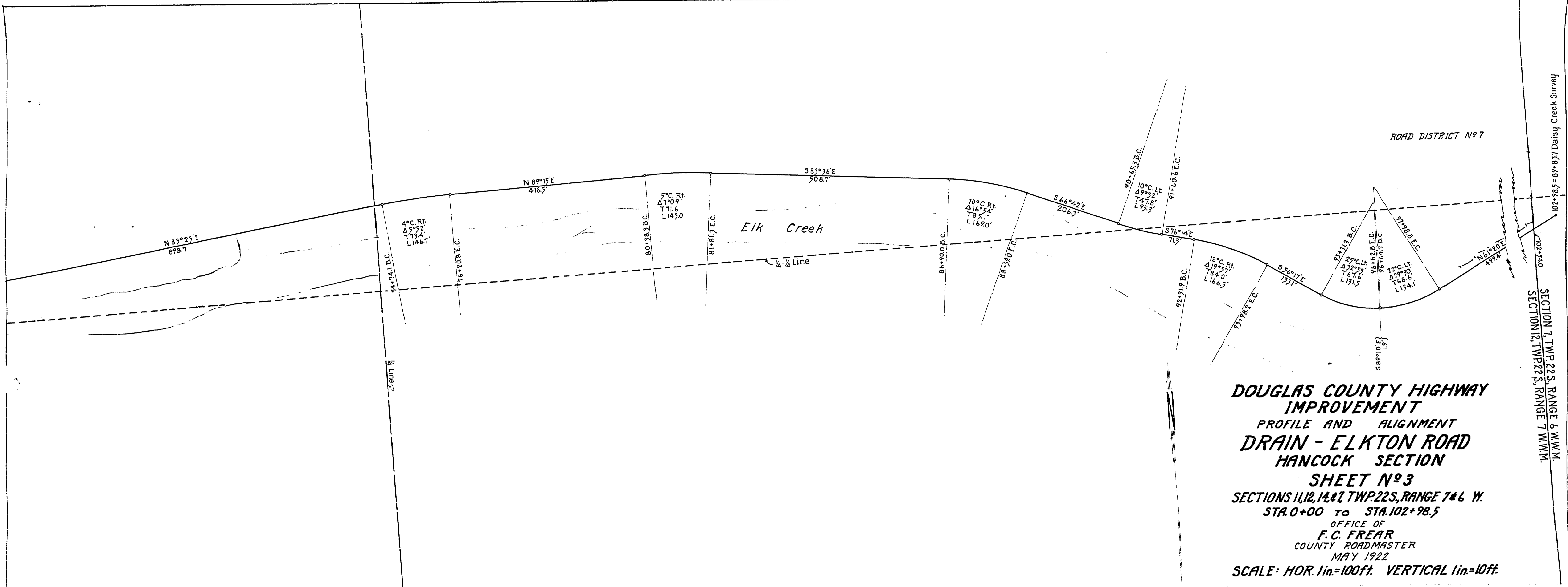


ST38-3



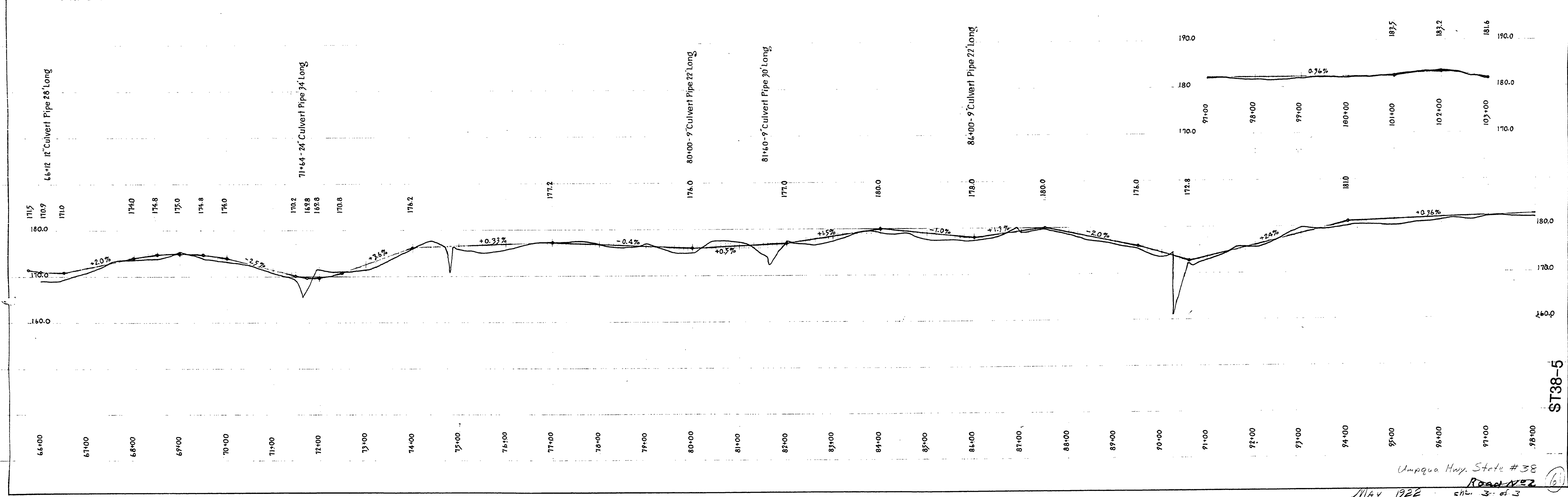
**DOUGLAS COUNTY HIGHWAY IMPROVEMENT**  
**PROFILE AND ALIGNMENT**  
**DRAIN - ELKTON ROAD**  
**HANCOCK SECTION**  
**SHEET N°2**  
 SECTIONS 11, 12, 14, 17, TWP 22 S., RANGE 7 W  
 STA. 0+00 TO STA. 102+98.5  
 OFFICE OF  
**F.C. FREAR**  
 COUNTY ROADMASTER  
 MAY 1922  
 SCALE: HOR. lin.=100ft. VERTICAL lin.=10ft





**DOUGLAS COUNTY HIGHWAY IMPROVEMENT**  
 PROFILE AND ALIGNMENT  
**DRAIN - ELKTON ROAD**  
**HANCOCK SECTION**  
**SHEET No 3**  
 SECTIONS 11, 12, 14, & 17 TWP. 22 S., RANGE 7 & 6 W.  
 STA. 0+00 TO STA. 102+98.5  
 OFFICE OF  
**F. C. FREAR**  
 COUNTY ROADMASTER  
 MAY 1922  
 SCALE: HOR. 1 in. = 100 ft. VERTICAL 1 in. = 10 ft.

SECTION 1 TWP. 22 S., RANGE 6 W. W.M.  
 SECTION 12 TWP. 22 S., RANGE 7 W. W.M.



ST38-5

Umpqua Hwy. State #38  
 Road No. 2  
 May, 1922  
 ch. 3 of 3