

DOUGLAS COUNTY HIGHWAY IMPROVEMENT

PROFILE & ALIGNMENT OF

ELKTON-REEDSPORT ROAD DIMMICK GRADE SECTION SEC'S. 7 & 18 - Tps. 22 S - R. 9 W - W.M.

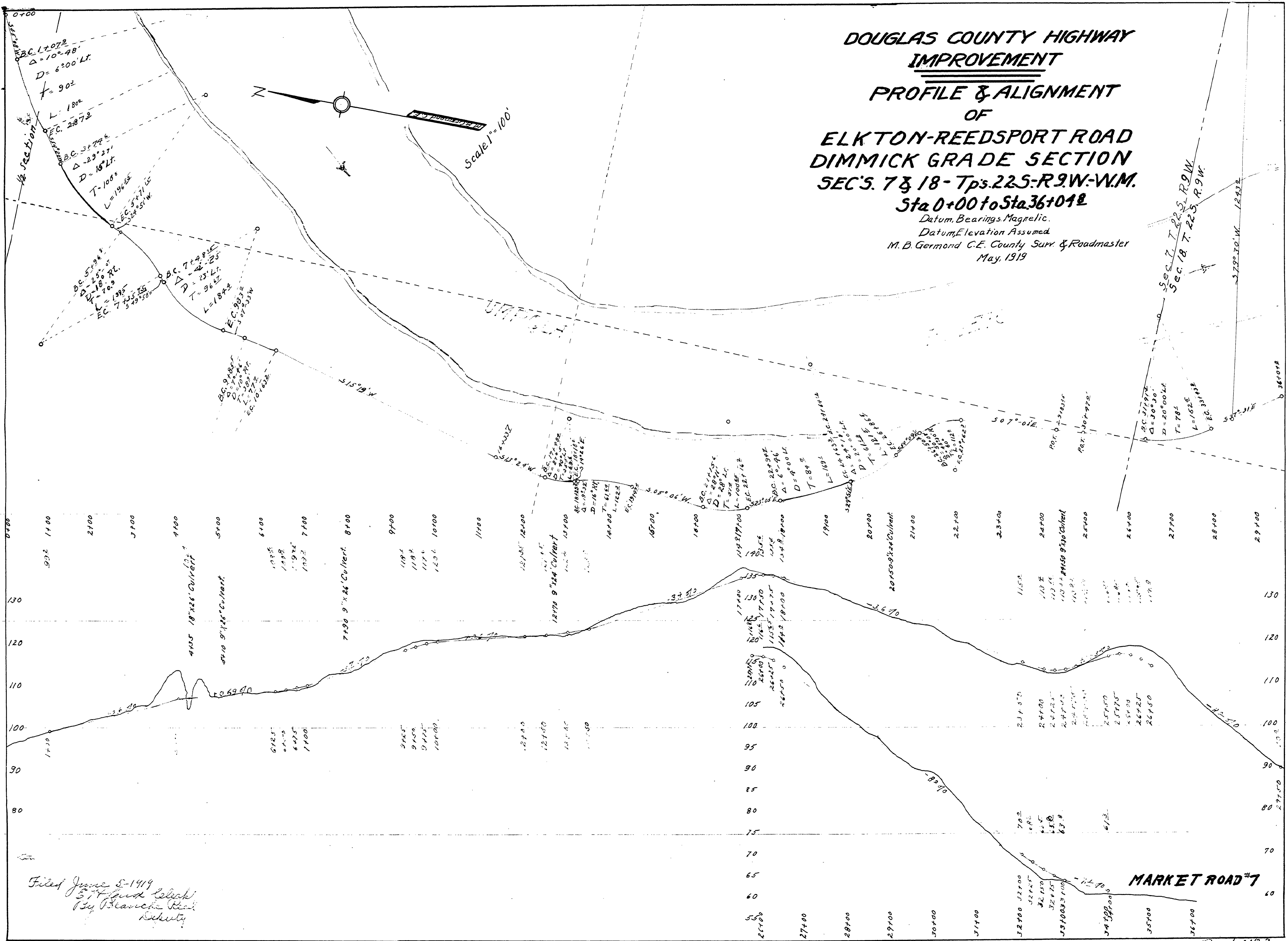
Sta 0+00 to Sta 36+01.8

Datum Bearings Magnetic

Datum Elevation Assumed

M. B. Germond C.E. County Surv. & Roadmaster

May, 1919



Filed June 5-1919
S. T. Land Clerk
By Blanche Reed
Secretary

ST38-21