

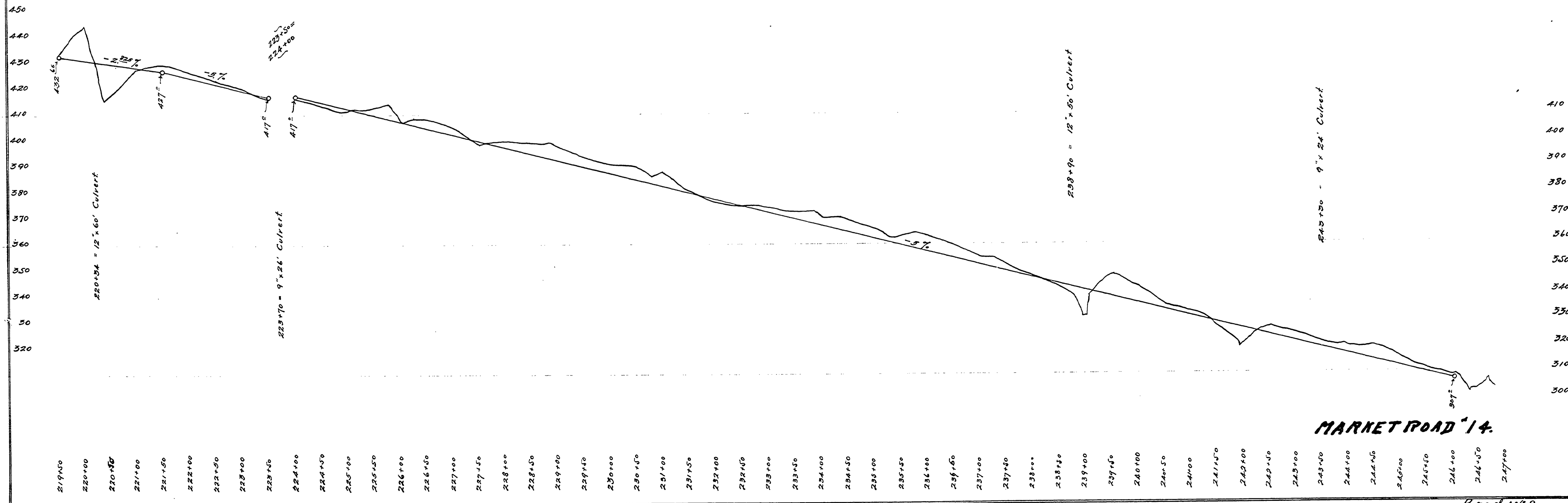
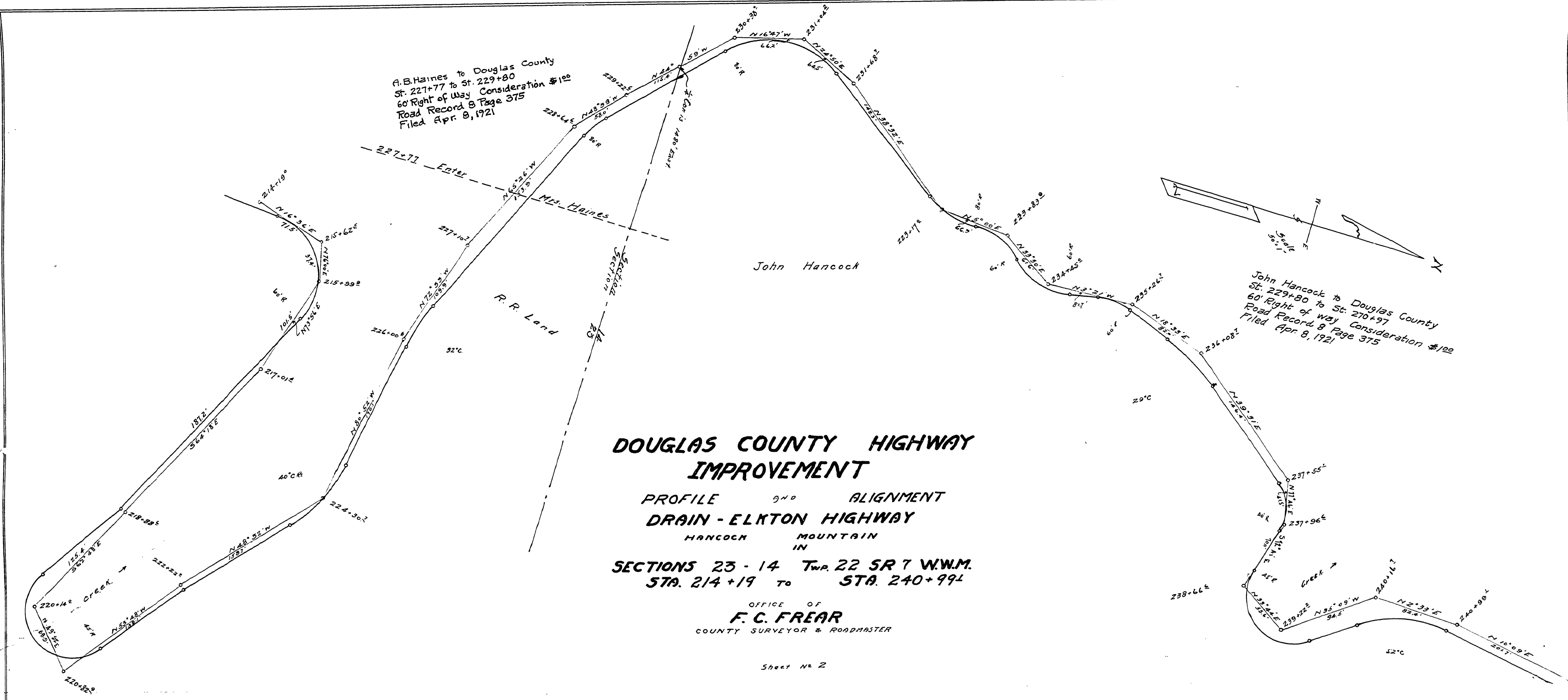
A. B. Haines to Douglas County  
 St. 227+77 to St. 229+80  
 60' Right of Way Consideration \$100  
 Road Record B Page 375  
 Filed Apr. 8, 1921

John Hancock to Douglas County  
 St. 229+80 to St. 270+97  
 60' Right of Way Consideration \$100  
 Road Record B Page 375  
 Filed Apr. 8, 1921

**DOUGLAS COUNTY HIGHWAY  
 IMPROVEMENT**  
 PROFILE AND ALIGNMENT  
**DRAIN - ELKTON HIGHWAY**  
 HANCOCH MOUNTAIN  
 IN  
 SECTIONS 23 - 14 Twp. 22 SR 7 W.W.M.  
 STA. 214+19 TO STA. 240+99

OFFICE OF  
**F. C. FREAR**  
 COUNTY SURVEYOR & ROADMASTER

Sheet No 2



Suppose State Hwy #28 No DATE sit. 2 of 3 ROAD #22

ST38-7

