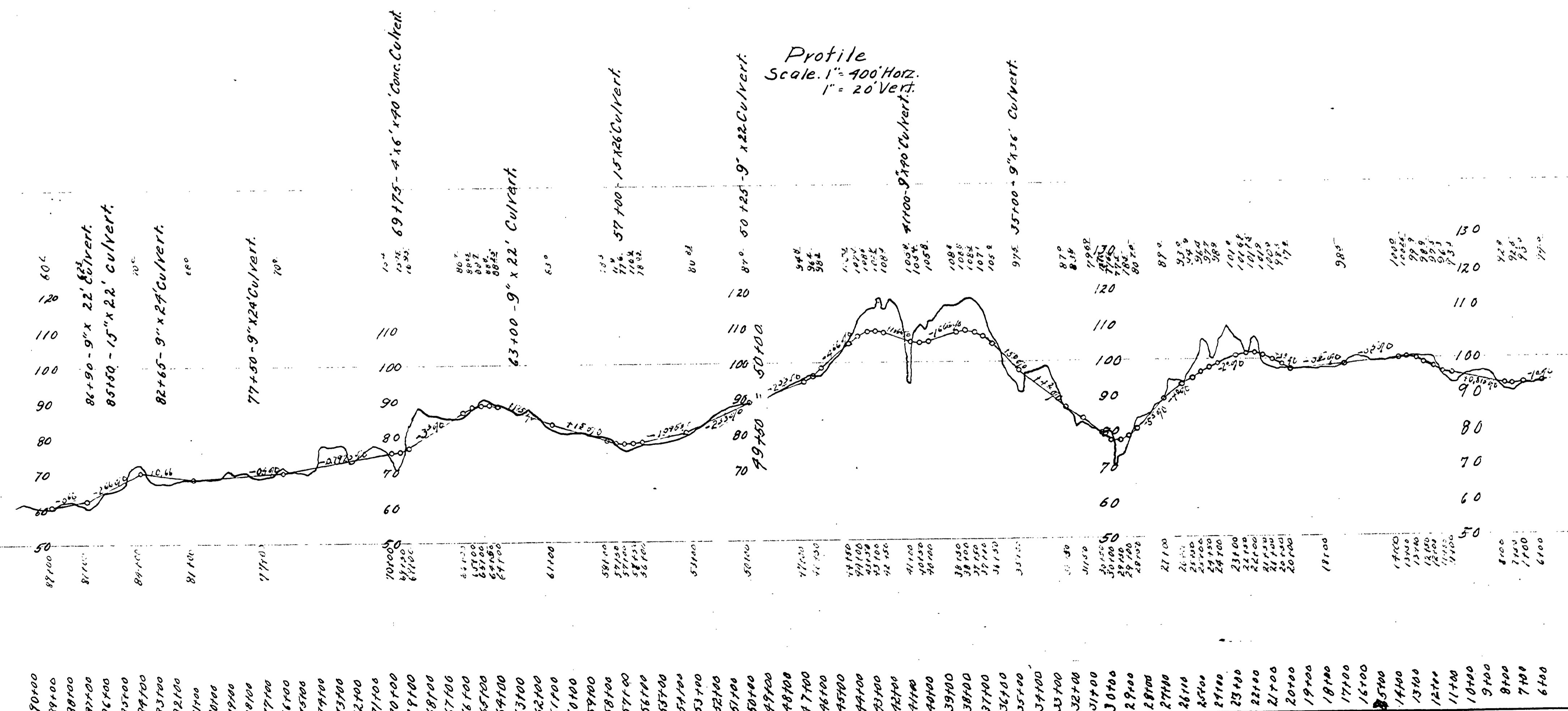
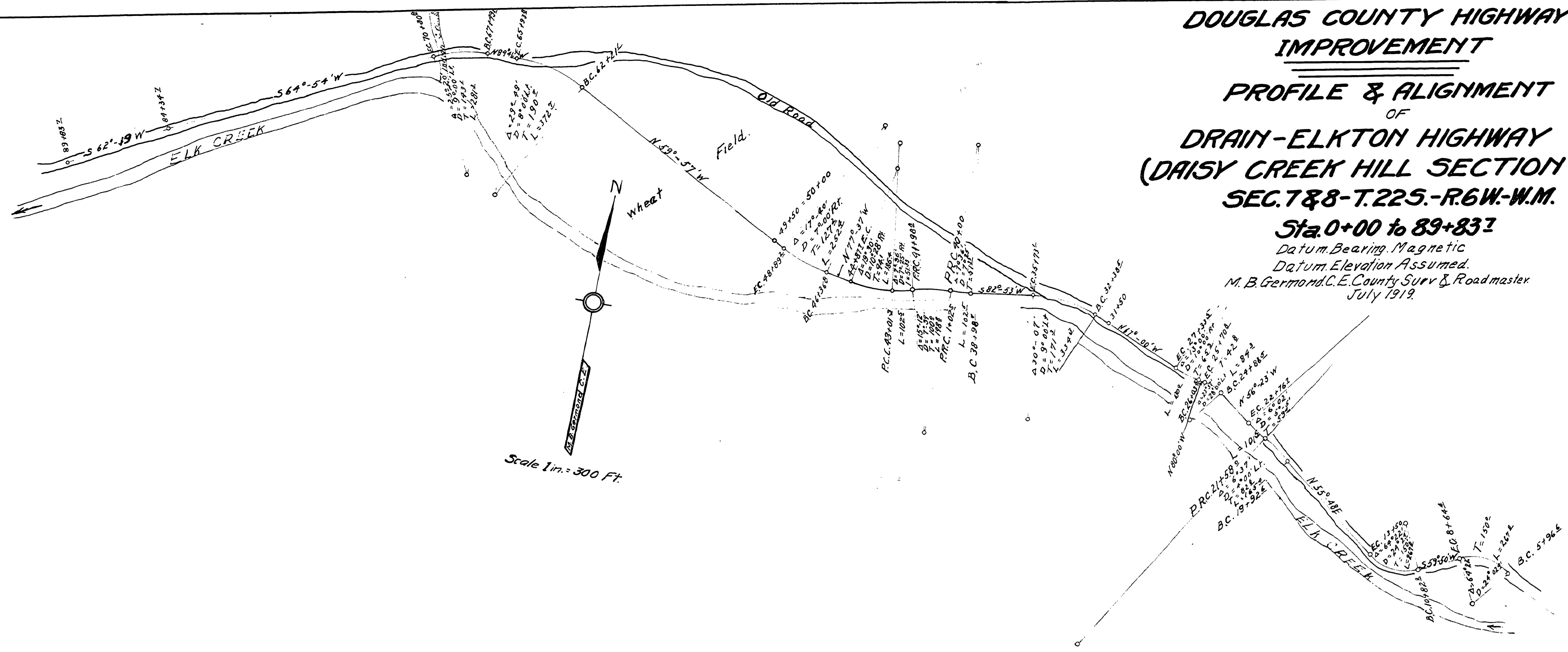


**DOUGLAS COUNTY HIGHWAY
IMPROVEMENT**
PROFILE & ALIGNMENT
OF
DRAIN-ELKTON HIGHWAY
(DAISY CREEK HILL SECTION)
SEC. 7 & 8 - T. 22 S. - R. 6 W. - W. M.

Sta. 0+00 to 89+83.7

Datum Bearing Magnetic
Datum Elevation Assumed.
M. B. Germond, C.E. County Surv. & Road Master
July 1919.



Filed July 7-1919
E. H. [Signature]
By Blanche Reed
Deputy
MARKET ROAD # 9

ST38-2