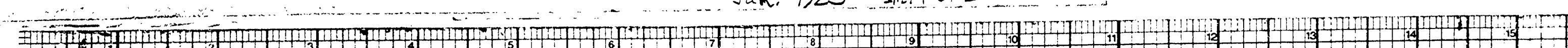
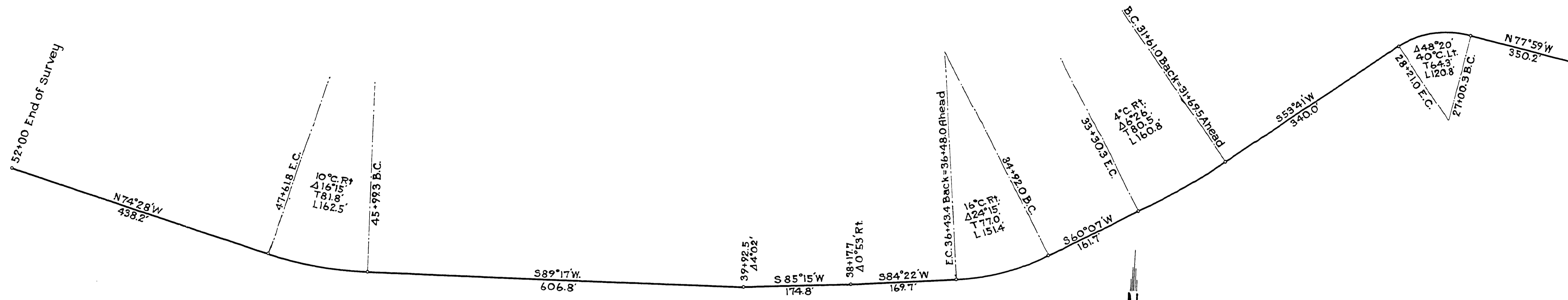


ST38-19

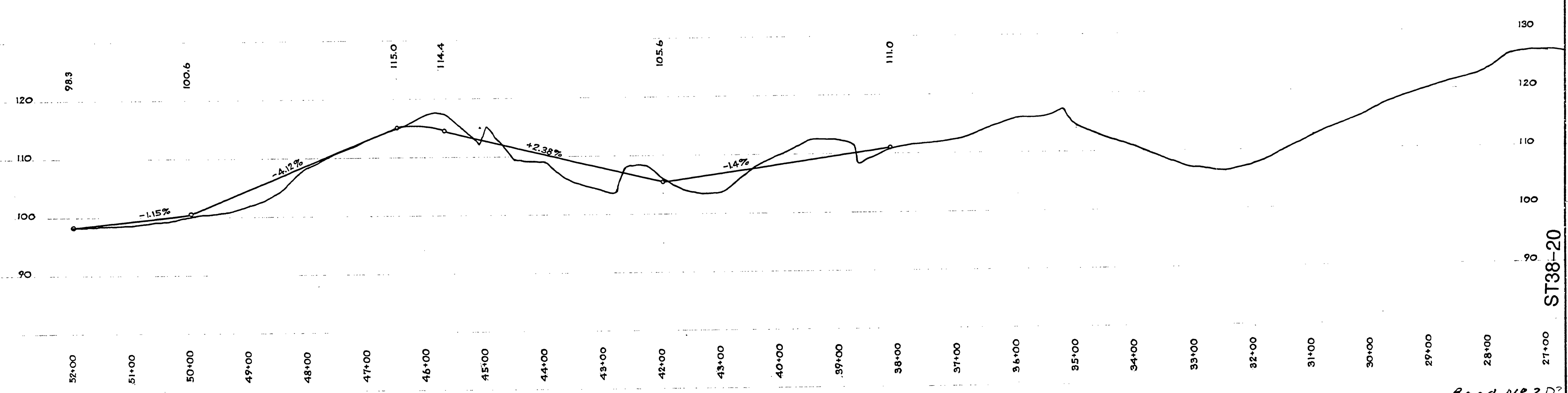
Jan. 1923





**DOUGLAS COUNTY HIGHWAY
IMPROVEMENT
PROFILE AND ALIGNMENT
ELKTON-REEDSPORT ROAD
BINDER SECTION
SHEET No 2**

STA. 0+00 TO STA. 52+00
OFFICE OF
F.C. FREAR
COUNTY ROADMASTER
JANUARY 1923
SCALE 1 in. = 100 ft.



Road No 203

