

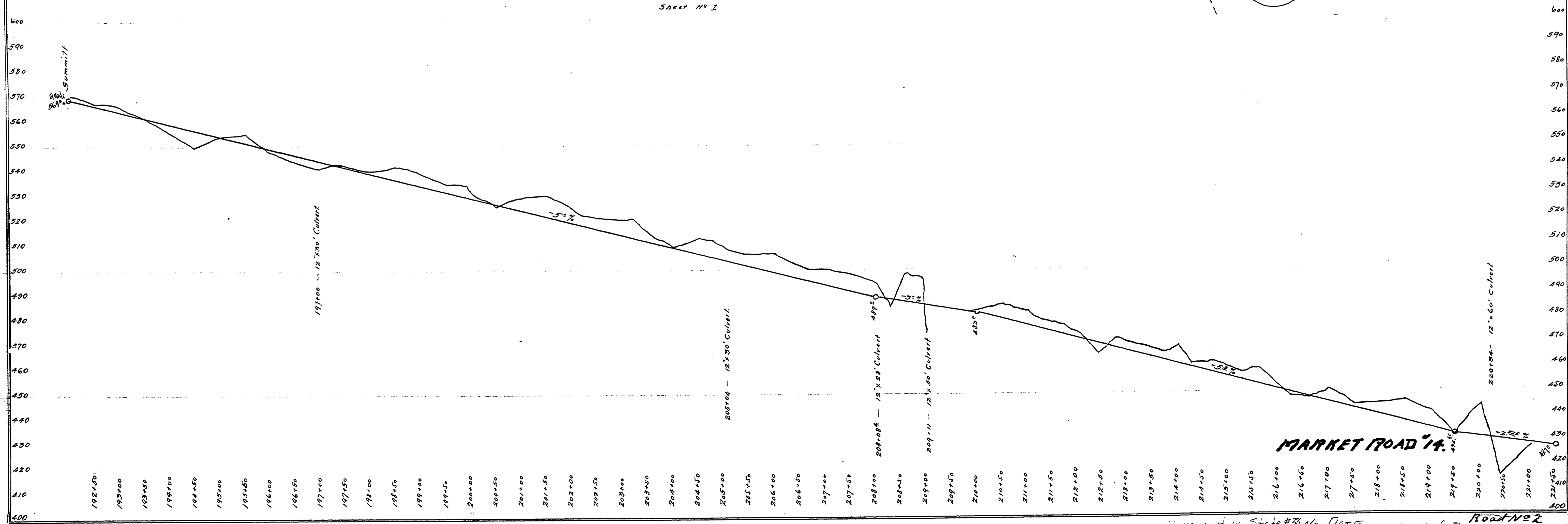
DOUGLAS COUNTY HIGHWAY IMPROVEMENT

PROFILE AND ALIGNMENT
DRAIN - ELKTON HIGHWAY
HANCOCH MOUNTAIN IN

SECTIONS 23-14 Twp. 22 SR 7 W.W.M.
STA 192+06.3 TO STA 220+14

OFFICE OF
F. C. FREAR
COUNTY SURVEYOR & ROADMASTER

Sheet No. 1



MARKET ROAD 14

ST38-6

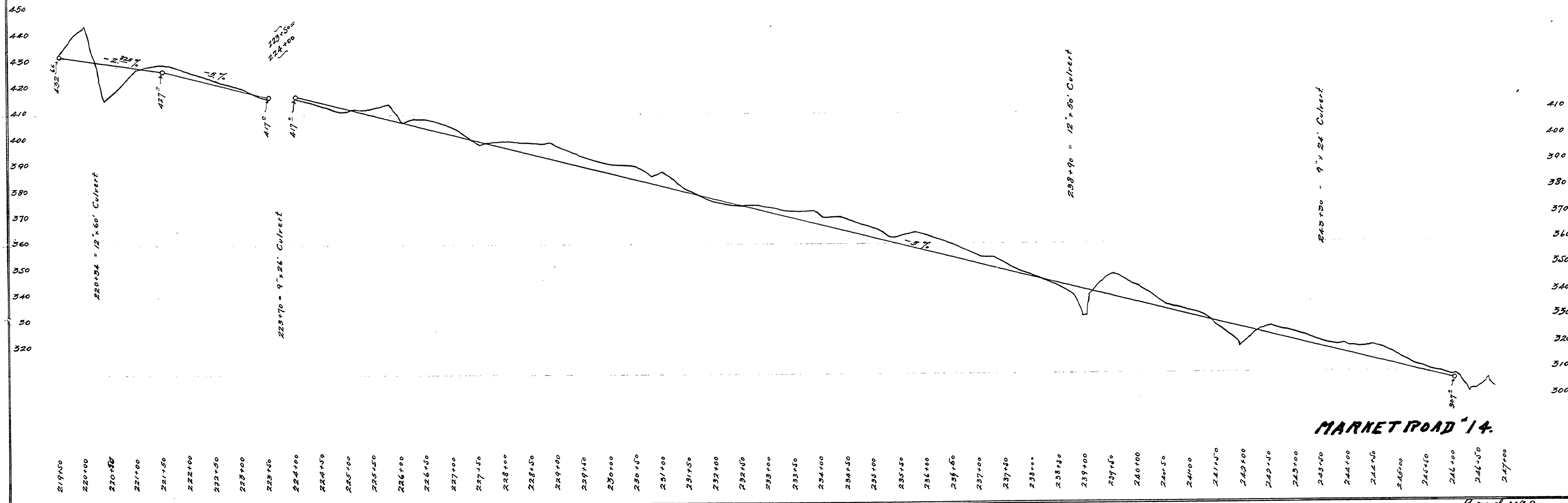
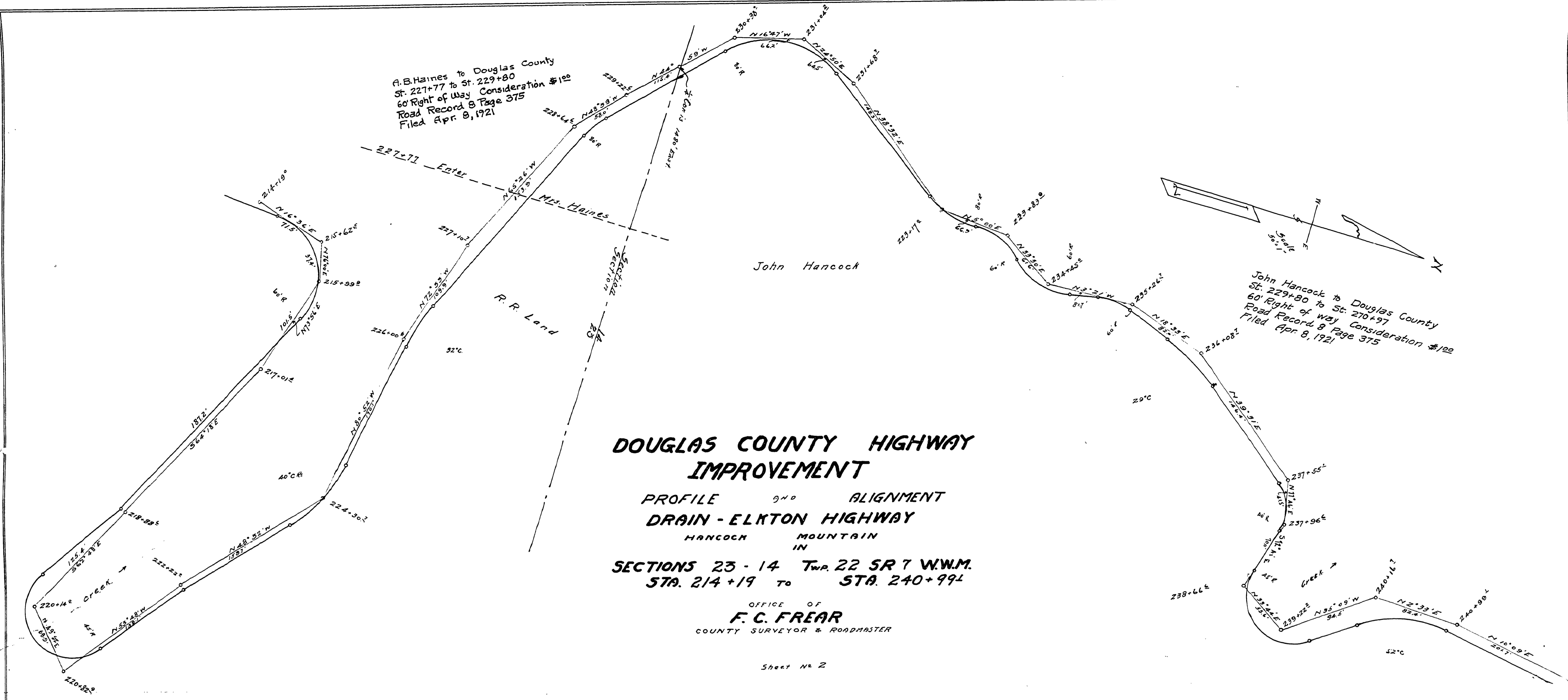
A. B. Haines to Douglas County
 St. 227+77 to St. 229+80
 60' Right of Way Consideration \$100
 Road Record B Page 375
 Filed Apr. 8, 1921

John Hancock to Douglas County
 St. 229+80 to St. 270+97
 60' Right of Way Consideration \$100
 Road Record B Page 375
 Filed Apr. 8, 1921

**DOUGLAS COUNTY HIGHWAY
 IMPROVEMENT**
 PROFILE AND ALIGNMENT
DRAIN - ELKTON HIGHWAY
 HANCOCH MOUNTAIN
 IN
 SECTIONS 23 - 14 Twp. 22 SR 7 W.W.M.
 STA. 214+19 TO STA. 240+99

OFFICE OF
F. C. FREAR
 COUNTY SURVEYOR & ROADMASTER

Sheet No 2



Suppose State Hwy #28 No DATE sheet 2 of 3 ROAD #22

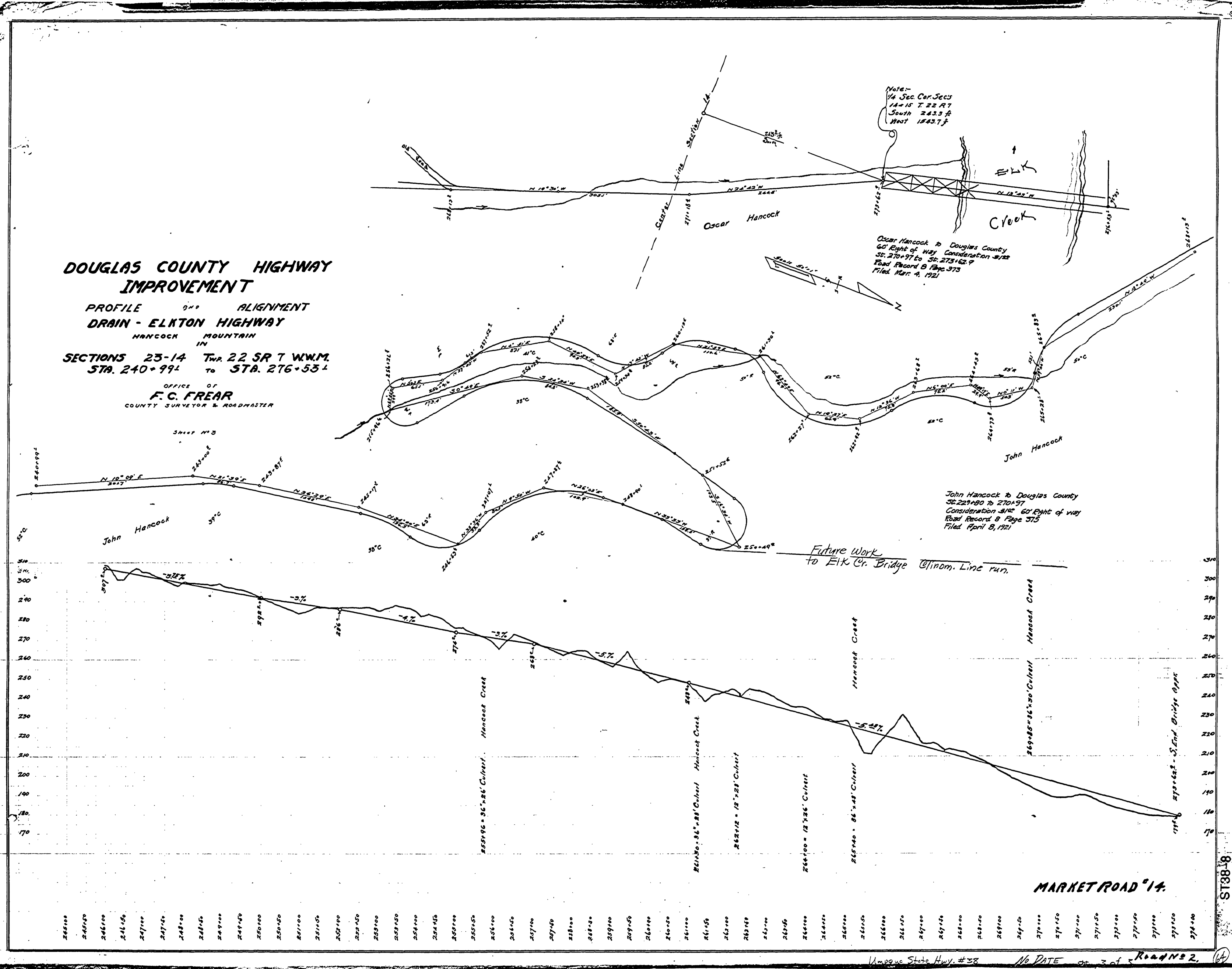
ST38-7

DOUGLAS COUNTY HIGHWAY IMPROVEMENT

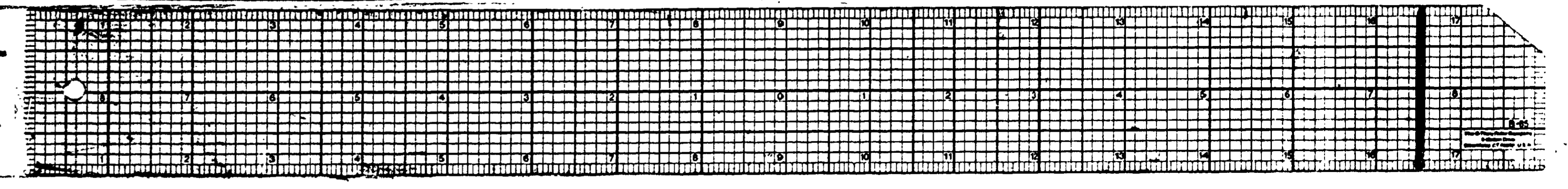
PROFILE ^{5/11} ALIGNMENT
DRAIN - ELKTON HIGHWAY
 HANCOCK MOUNTAIN IN

SECTIONS 25-14 Twp. 22 SR 7 W.W.M.
 STA. 240+99.4 TO STA. 276+55.4

OFFICE OF
F. C. FREAR
 COUNTY SURVEYOR & ROADMASTER



30 X



Use State Hwy. #28 No DATE or Sta. Road #2.