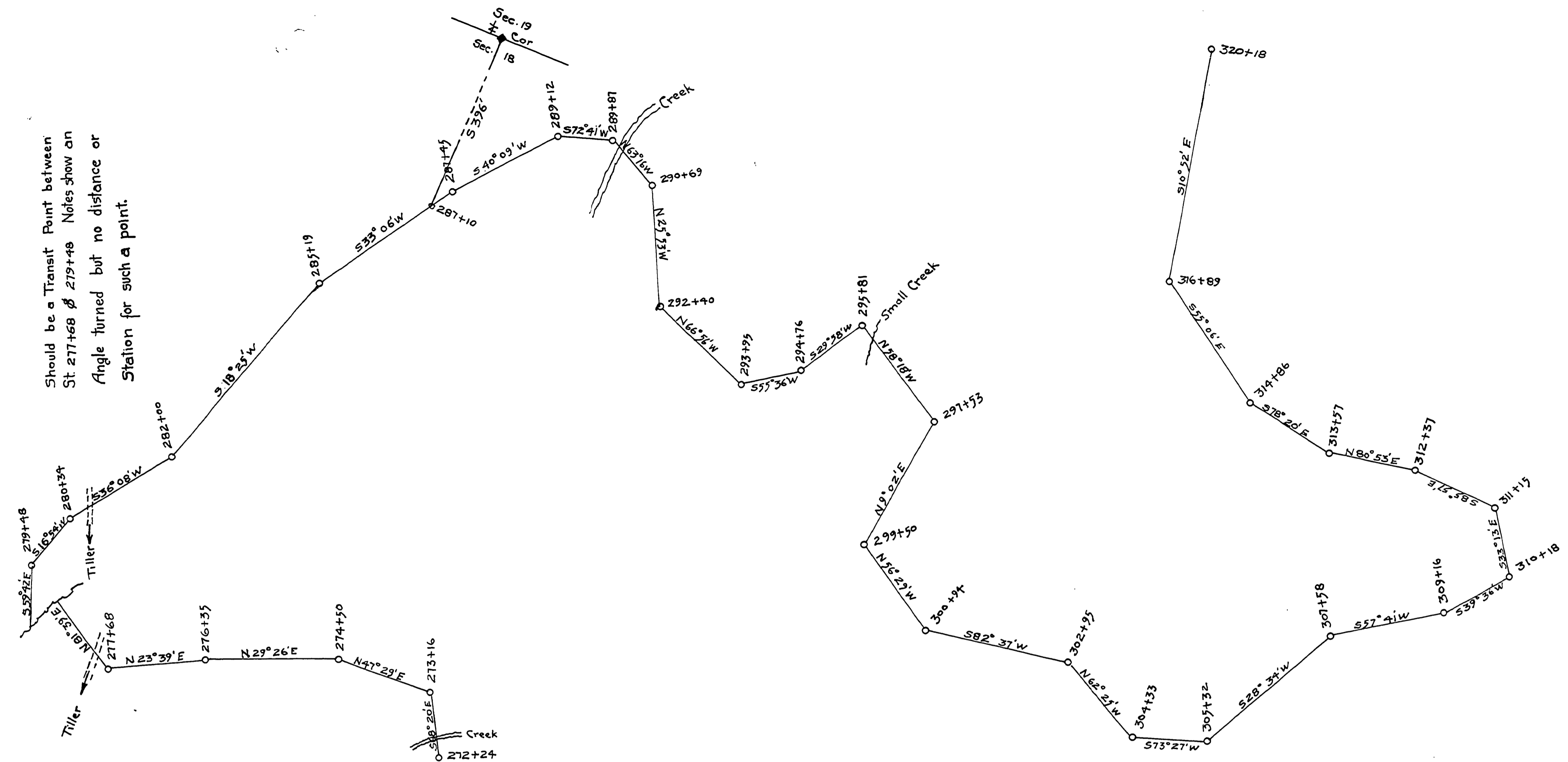


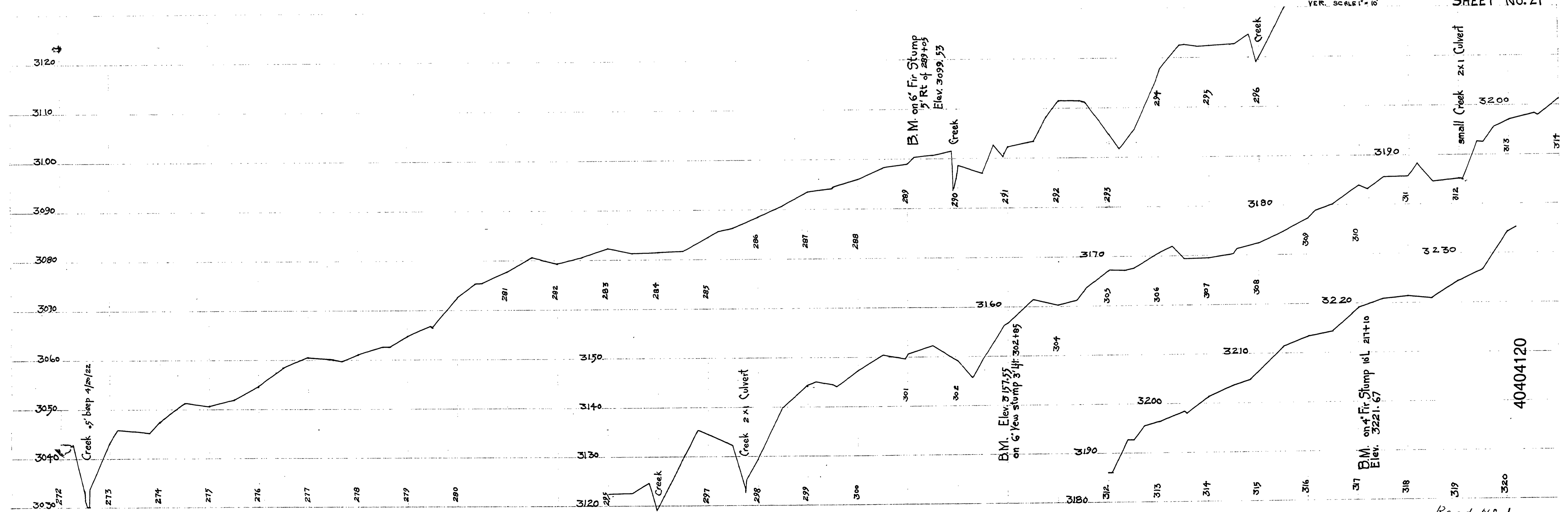
Should be a Transit Point between St. 277+68 & 279+48. Notes show an Angle turned but no distance or Station for such a point.



**DOUGLAS COUNTY HIGHWAY IMPROVEMENT**  
 Profile and Alignment  
**TILLER TRAIL**  
 Section  
 Sec. T. S., R. W.W.M.  
 Platted from Gov. Field Notes  
 Office of F. C. Frear  
 County Roadmaster

HOR. SCALE 1"=100'  
 VER. SCALE 1"=10'

SHEET NO. 21



40404120

~M.P. 40.4 - 41.2

NO DATE sk= 23 of 25

Road No. 1

