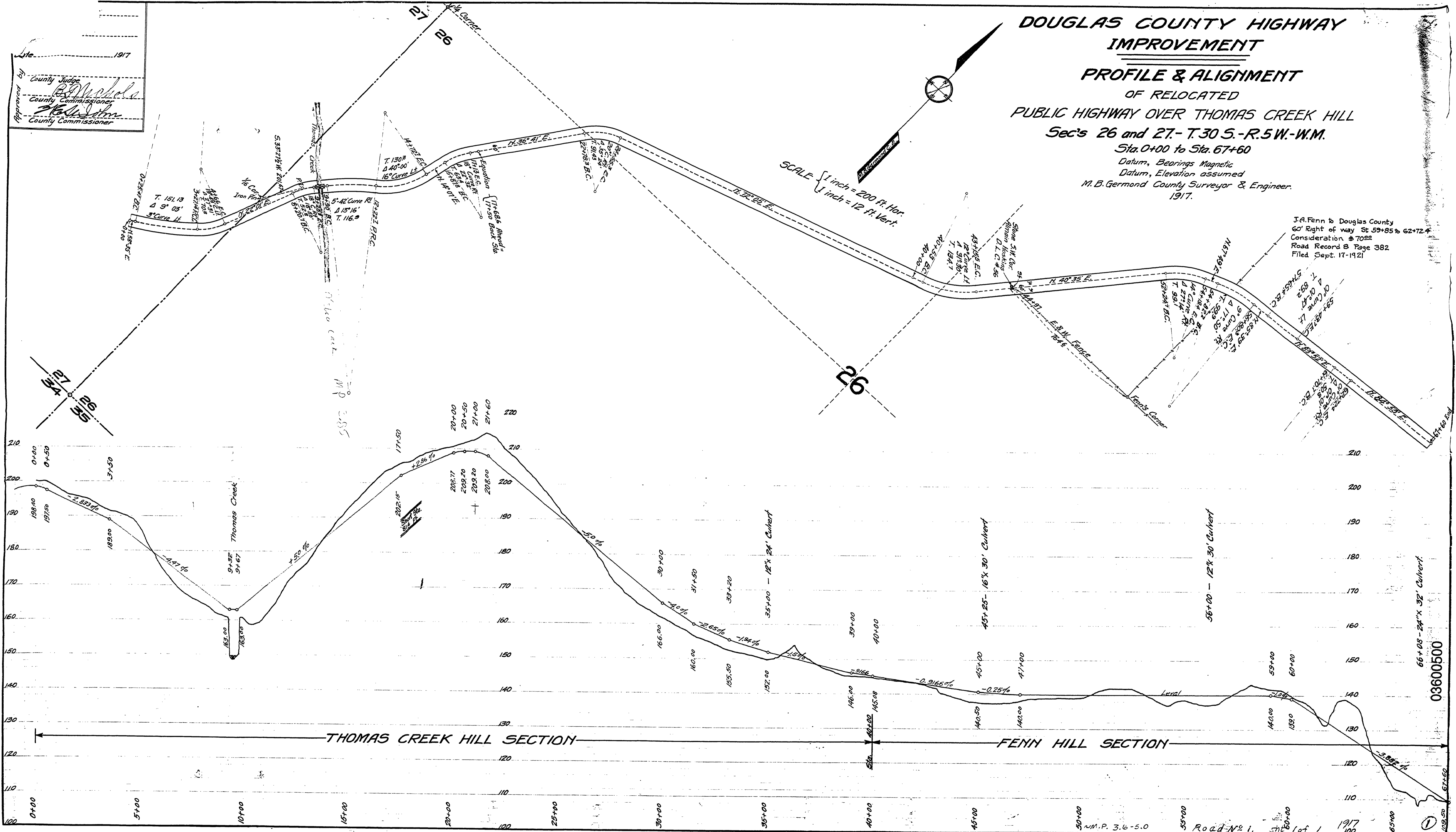


Approved by
 County Judge
[Signature]
 County Commissioner
[Signature]
 County Commissioner
[Signature]

**DOUGLAS COUNTY HIGHWAY
 IMPROVEMENT
 PROFILE & ALIGNMENT
 OF RELOCATED
 PUBLIC HIGHWAY OVER THOMAS CREEK HILL
 Sec's 26 and 27 - T.30 S.-R.5 W.-W.M.
 Sta. 0+00 to Sta. 67+60
 Datum, Bearings Magnetic
 Datum, Elevation assumed
 M. B. Germond County Surveyor & Engineer.
 1917.**

SCALE 1 inch = 200 ft. Hor.
 1 inch = 12 ft. Vert.

J.A. Fenn to Douglas County
 60' Right of way St. 59+85 to 62+72.4
 Consideration @ 7000
 Road Record B Page 382
 Filed Sept. 17-1921



03600500