

LEGEND:

- Found monument as noted.
- ⊕ Found Brass Cap.
- Set 5/8" x 30" Iron Rod with Aluminum Cap marked "DOUGLAS CO RD DPT R-W" w/ Brass Washer marked "LS 1654"
- Calculated Point, No monumentation.

NOTE:

Coordinates are a local coordinate system based on Federal Highway Administration control survey. Bearings are based on this Coordinate System. Record information is available from:

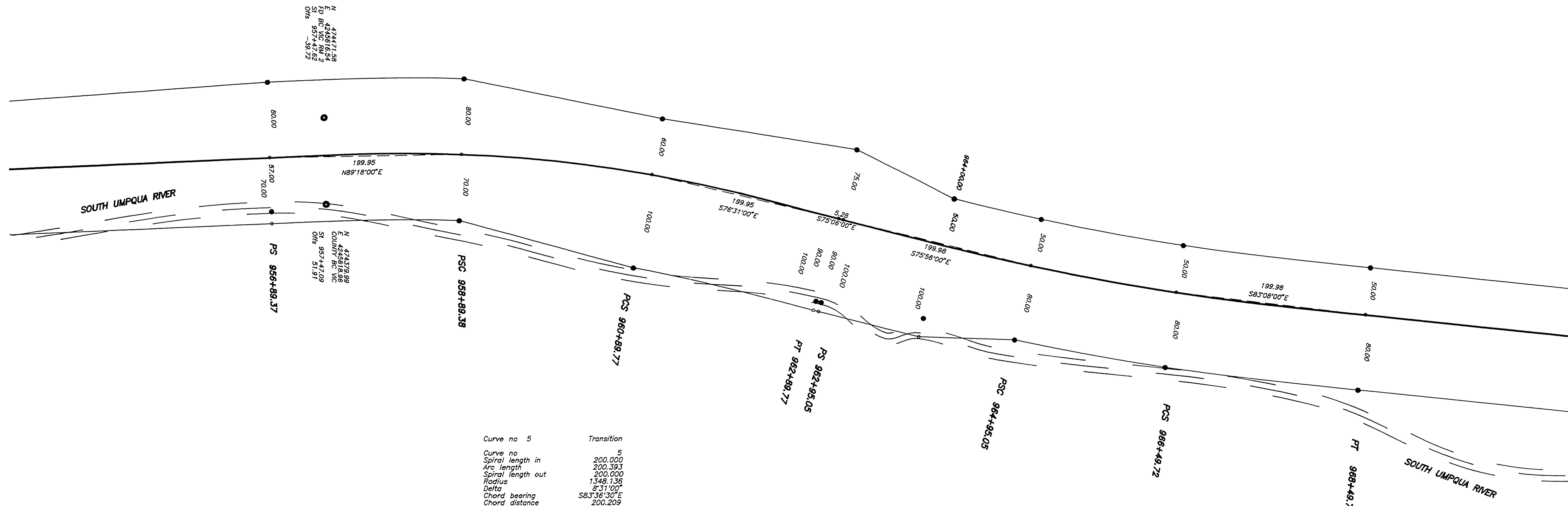
U.S. Department of Transportation  
Federal Highway Administration  
Western Federal Lands Highway Division  
610 E. Fifth Street  
Vancouver, Wa. 98661

Coordinates shown are OCS 83 South Zone.

FILED

Date: 7-14-95 By: RP  
This survey consists of: 9 Pages  
Map: \_\_\_\_\_  
Narrative: \_\_\_\_\_  
Corner Plat: \_\_\_\_\_

DOUGLAS COUNTY SURVEYOR



Curve no	Transition
Curve no	5
Spiral length in	200.000
Arc length	200.393
Spiral length out	200.000
Radius	1348.136
Delta	8°31'00"
Chord bearing	S83°36'30"E
Chord distance	200.209

Curve no	Transition
Curve no	6
Spiral length in	200.000
Arc length	154.669
Spiral length out	2291.831
Radius	352'00"
Delta	57°32'00"E
Chord bearing	154.640
Chord distance	

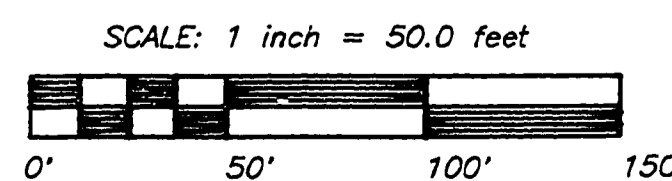
RIGHT-OF-WAY SURVEY OF CANYONVILLE-TRAIL HIGHWAY

IN NE 1/4, SEC. 34, SE 1/4 SEC. 27, SW 1/4, NW 1/4  
& NE 1/4, SEC. 26 AND NW 1/4, SEC. 25

T30S, R3W, W.M.

For Federal Highway Administration  
22 MAY 1995

COUNTY SURVEYORS FILE DATA  
DO NOT REMOVE FROM OFFICE



M.P. 21.50 - 21.72

SHEET 8 OF 9

REGISTERED  
PROFESSIONAL  
LAND SURVEYOR  
*Ronald A. Quimby*  
OREGON  
MAY 14, 1975  
RONALD A. QUIMBY  
1654  
EXP. DATE: 12/31/96

**AA**  
**SURVEYING SERVICE, INC.**  
3076 EAST DIAMOND LAKE BLVD.  
ROSEBURG, OREGON 97470  
TEL (503)672-2096  
FAX (503)672-0611

CO. RD. #1

21502172

44