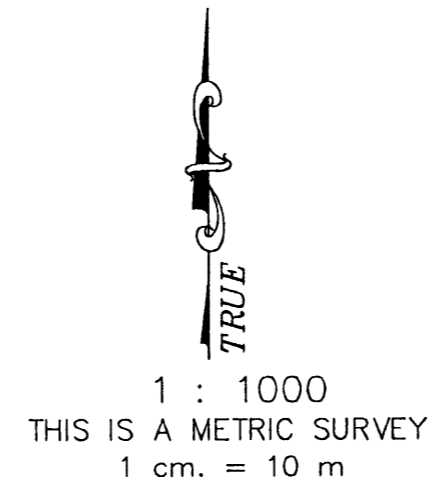


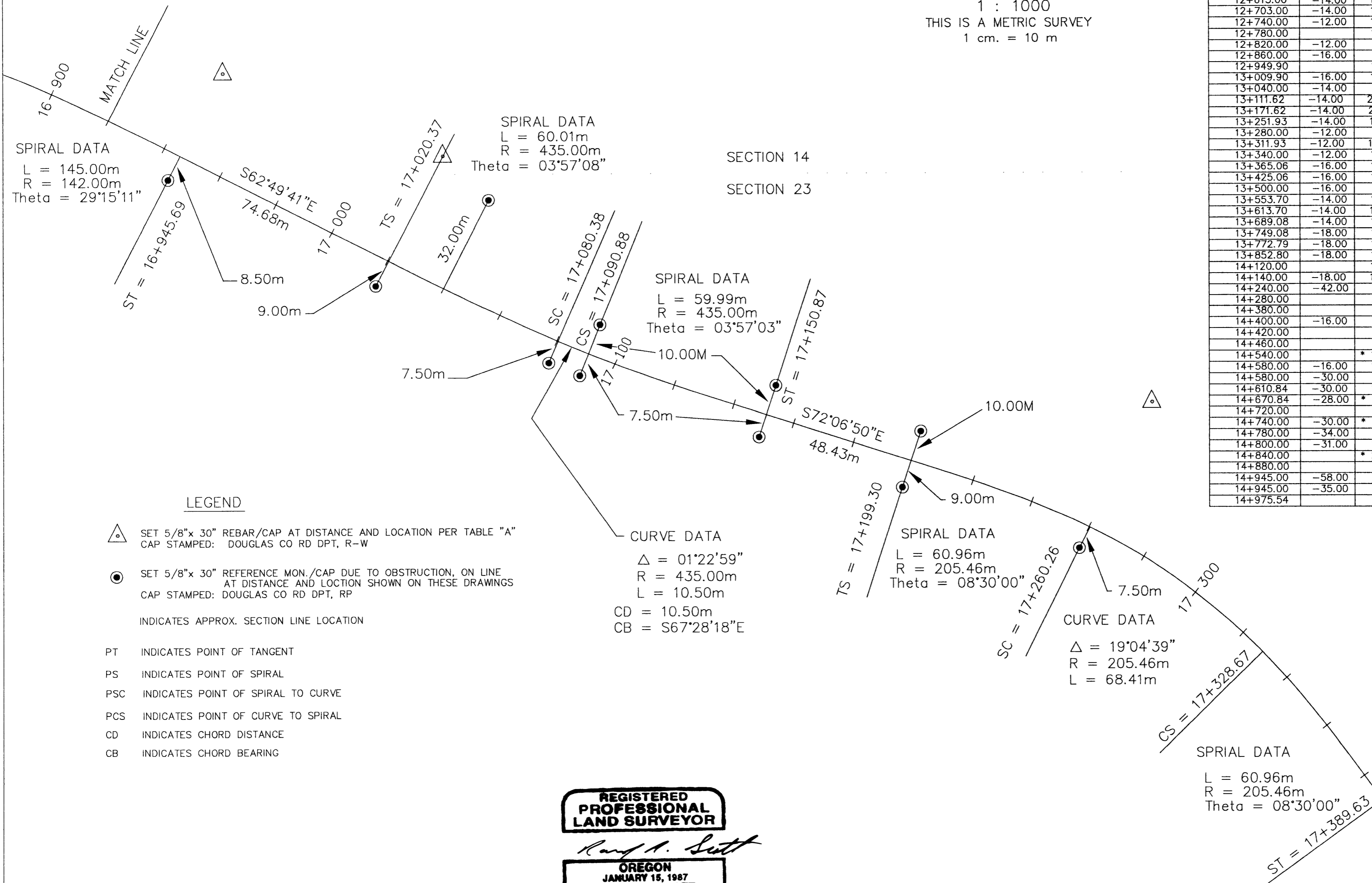
CANYONVILLE - TRAIL HIGHWAY
 RIGHT OF WAY MONUMENTATION SURVEY CONTINUED
 DOUGLAS COUNTY ROUTE NO. 1

TABLE "A"

NOTE: THE INFORMATION SHOWN BELOW WAS PROVIDED BY FED. HWY.
 DISTANCES SHOWN ARE FROM R.O.W. CENTER LINE
 A NEGATIVE OFFSET DISTANCE INDICATES LEFT OF CENTER LINE
 AN ASTERISK INDICATES MONUMENT NOT SET AT OFFSET DISTANCE
 SHOWN IN TABLE "A". SEE DRAWING FOR REFERENCE MONUMENT DISTANCE.



R.O.W. STATION	OFFSET	OFFSET	R.O.W. STATION	OFFSET	OFFSET
12+484.82	-12.00	12.00	15+000.00	-60.00	
12+574.82	-12.00	12.00	15+010.00	-20.00	
12+613.00	-14.00	12.00	15+020.54	-20.00	14.00
12+703.00	-14.00	12.00	15+060.00	-20.00	
12+740.00	-12.00	14.00	15+093.52	-25.00	14.00
12+780.00	-12.00	12.00	15+138.58	-20.00	12.00
12+820.00	-12.00		15+140.32	-25.00	
12+860.00	-16.00		15+200.36	-30.00	14.00
12+949.90	-16.00	12.00	15+220.00		14.00
13+009.90	-16.00	12.00	15+260.00	-30.00	20.00
13+040.00	-14.00		15+300.00	-28.00	
13+111.62	-14.00	24.00	15+340.00	-28.00	
13+171.62	-14.00	20.00	15+406.99	-20.00	20.00
13+251.93	-14.00	12.00	15+466.99	-20.00	18.00
13+280.00	-12.00		15+689.19	-20.00	18.00
13+311.93	-12.00	16.00	15+749.19	-16.00	18.00
13+340.00	-12.00	12.00	15+823.06	-16.00	18.00
13+365.06	-16.00	12.00	15+883.06	-16.00	20.00
13+425.06	-16.00	12.00	15+920.00	-18.00	
13+500.00	-16.00		15+960.00	-12.00	
13+553.70	-14.00	12.00	16+070.01	-12.00	16.00
13+613.70	-14.00	12.00	16+130.01	-12.00	14.00
13+689.08	-14.00	12.00	16+131.71	-12.00	14.00
13+749.08	-18.00	12.00	16+191.71	-12.00	16.00
13+772.79	-18.00	14.00	16+227.04	-12.00	16.00
13+852.80	-18.00	14.00	16+287.04	-12.00	* 20.00
14+120.00	-18.00	14.00	16+354.28	-14.00	* 20.00
14+140.00	-18.00	16.00	16+414.28	-14.00	* 20.00
14+240.00	-42.00	16.00	16+508.27	-14.00	* 20.00
14+280.00		20.00	16+520.00	* -35.00	
14+380.00		20.00	16+553.27	-35.00	* 20.00
14+400.00	-16.00		16+566.81	-35.00	* 20.00
14+420.00		16.00	16+566.81	-55.00	
14+460.00		12.00	16+611.81	-115.00	* 20.00
14+540.00		* 12.00	16+720.53	-110.00	* 20.00
14+580.00	-16.00	16.00	16+765.53	-105.00	* 20.00
14+610.84	-30.00	14.00	16+800.69	* -100.00	
14+670.84	-28.00	* 12.00	16+819.98	* -100.00	
14+720.00		22.00	16+870.00	-30.00	
14+740.00	-30.00	* 22.00	16+945.69	-30.00	* 20.00
14+780.00	-34.00		17+020.37	-38.00	* 20.00
14+800.00	-31.00	16.00	17+040.00	* -45.00	
14+840.00		* 20.00	17+080.38		* 20.00
14+880.00		20.00	17+090.88	* -45.00	* 20.00
14+945.00	-58.00		17+150.87	* -48.00	* 20.00
14+945.00	-35.00		17+199.30	* -45.00	* 20.00
14+975.54		14.00	17+260.26	-45.00	* 21.00



LEGEND

- △ SET 5/8"x 30" REBAR/CAP AT DISTANCE AND LOCATION PER TABLE "A"
CAP STAMPED: DOUGLAS CO RD DPT, R-W
- SET 5/8"x 30" REFERENCE MON./CAP DUE TO OBSTRUCTION, ON LINE
AT DISTANCE AND LOCATION SHOWN ON THESE DRAWINGS
CAP STAMPED: DOUGLAS CO RD DPT, RP
- INDICATES APPROX. SECTION LINE LOCATION
- PT INDICATES POINT OF TANGENT
- PS INDICATES POINT OF SPIRAL
- PSC INDICATES POINT OF SPIRAL TO CURVE
- PCS INDICATES POINT OF CURVE TO SPIRAL
- CD INDICATES CHORD DISTANCE
- CB INDICATES CHORD BEARING

CURVE DATA
 $\Delta = 01^{\circ}22'59''$
 $R = 435.00m$
 $L = 10.50m$
 $CD = 10.50m$
 $CB = S67^{\circ}28'18''E$

REGISTERED
 PROFESSIONAL
 LAND SURVEYOR

Randy R. Scott
 OREGON
 JANUARY 15, 1987
 RANDY R. SCOTT
 2265

LICENSE EXPIRES 06/30/2004

FILED
 Date: 11/3/2003 By: JP
 This survey consists of:
 Map: _____
 Narrative: _____
 Corner Rpt: _____
 DOUGLAS COUNTY
 SURVEYOR

DRAWN BY: R. SCOTT	DATE: 3/25/03
CHECKED BY: J. SCOTT	DRAWING NO.: 1
JOB NO.: 45	SHEET 10 OF 10

M.P. 13.76 - 14.04
CO. RD. # 1

13761404