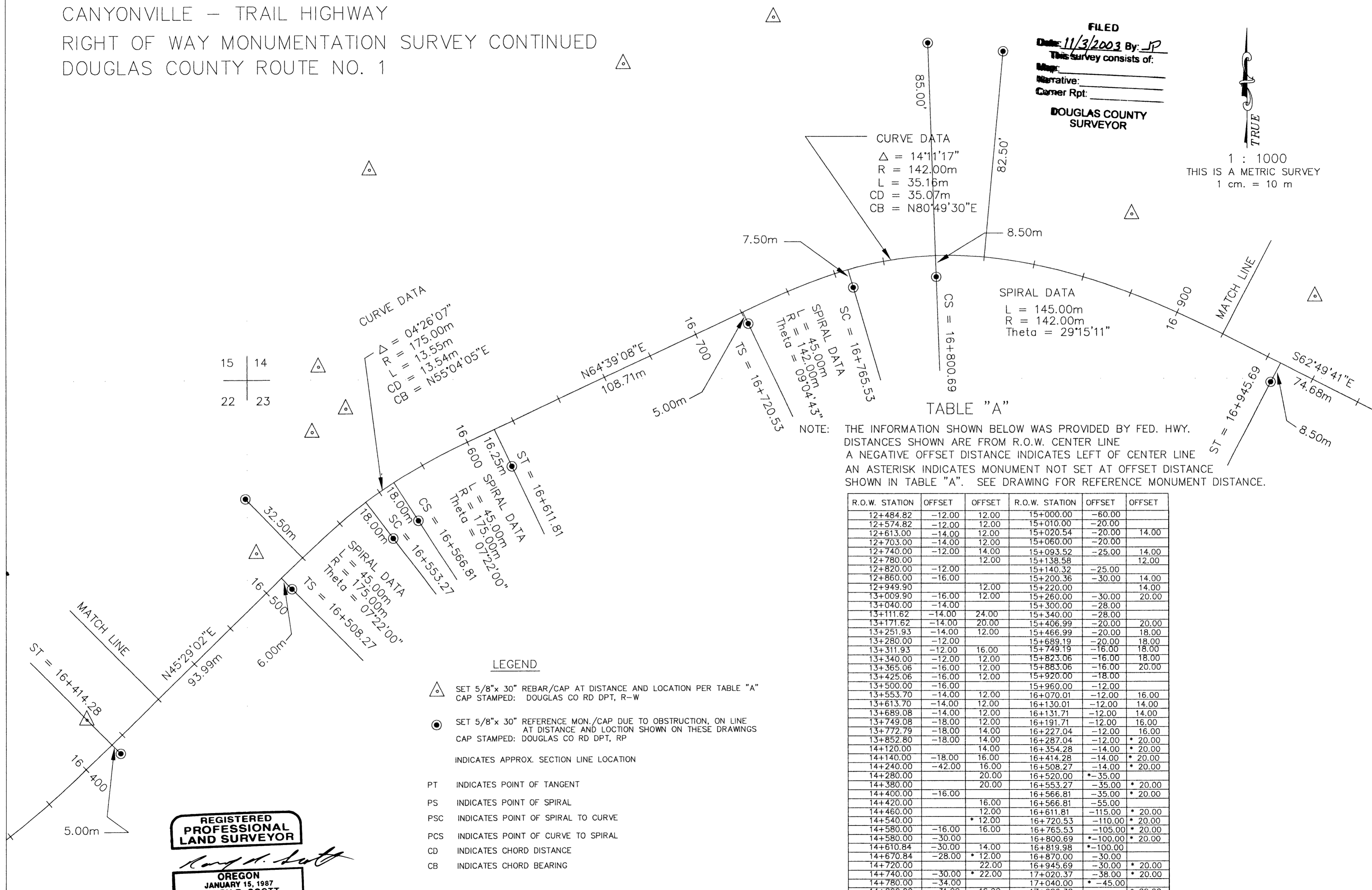


CANYONVILLE - TRAIL HIGHWAY
 RIGHT OF WAY MONUMENTATION SURVEY CONTINUED
 DOUGLAS COUNTY ROUTE NO. 1

FILED
 Date: 11/3/2003 By: JP
 This survey consists of:
 Narrative:
 Corner Rpt:
 DOUGLAS COUNTY
 SURVEYOR

1 : 1000
 THIS IS A METRIC SURVEY
 1 cm. = 10 m



15 | 14

 22 | 23

LEGEND

- \triangle SET 5/8" x 30" REBAR/CAP AT DISTANCE AND LOCATION PER TABLE "A" CAP STAMPED: DOUGLAS CO RD DPT, R-W
- \odot SET 5/8" x 30" REFERENCE MON./CAP DUE TO OBSTRUCTION, ON LINE AT DISTANCE AND LOCATION SHOWN ON THESE DRAWINGS CAP STAMPED: DOUGLAS CO RD DPT, RP
- INDICATES APPROX. SECTION LINE LOCATION
- PT INDICATES POINT OF TANGENT
- PS INDICATES POINT OF SPIRAL
- PSC INDICATES POINT OF SPIRAL TO CURVE
- PCS INDICATES POINT OF CURVE TO SPIRAL
- CD INDICATES CHORD DISTANCE
- CB INDICATES CHORD BEARING

REGISTERED
 PROFESSIONAL
 LAND SURVEYOR

Randy R. Scott
 OREGON
 JANUARY 15, 1987
 RANDY R. SCOTT
 2265

LICENSE EXPIRES 06/30/2004

R.O.W. STATION	OFFSET	OFFSET	R.O.W. STATION	OFFSET	OFFSET
12+484.82	-12.00	12.00	15+000.00	-60.00	
12+574.82	-12.00	12.00	15+010.00	-20.00	
12+613.00	-14.00	12.00	15+020.54	-20.00	14.00
12+703.00	-14.00	12.00	15+060.00	-20.00	
12+740.00	-12.00	14.00	15+093.52	-25.00	14.00
12+780.00		12.00	15+138.58		12.00
12+820.00	-12.00		15+140.32	-25.00	
12+860.00	-16.00		15+200.36	-30.00	14.00
12+949.90		12.00	15+220.00		14.00
13+009.90	-16.00	12.00	15+260.00	-30.00	20.00
13+040.00	-14.00		15+300.00	-28.00	
13+111.62	-14.00	24.00	15+340.00	-28.00	
13+171.62	-14.00	20.00	15+406.99	-20.00	20.00
13+251.93	-14.00	12.00	15+466.99	-20.00	18.00
13+280.00	-12.00		15+689.19	-20.00	18.00
13+311.93	-12.00	16.00	15+749.19	-16.00	18.00
13+340.00	-12.00	12.00	15+823.06	-16.00	18.00
13+365.06	-16.00	12.00	15+883.06	-16.00	20.00
13+425.06	-16.00	12.00	15+920.00	-18.00	
13+500.00	-16.00		15+960.00	-12.00	
13+553.70	-14.00	12.00	16+070.01	-12.00	16.00
13+613.70	-14.00	12.00	16+130.01	-12.00	14.00
13+689.08	-14.00	12.00	16+131.71	-12.00	14.00
13+749.08	-18.00	12.00	16+191.71	-12.00	16.00
13+772.79	-18.00	14.00	16+227.04	-12.00	16.00
13+852.80	-18.00	14.00	16+287.04	-12.00	* 20.00
14+120.00		14.00	16+354.28	-14.00	* 20.00
14+140.00	-18.00	16.00	16+414.28	-14.00	* 20.00
14+240.00	-42.00	16.00	16+508.27	-14.00	* 20.00
14+280.00		20.00	16+520.00	* -35.00	
14+380.00		20.00	16+553.27	-35.00	* 20.00
14+400.00	-16.00		16+566.81	-35.00	* 20.00
14+420.00		16.00	16+566.81	-55.00	
14+460.00		12.00	16+611.81	-115.00	* 20.00
14+540.00		* 12.00	16+720.53	-110.00	* 20.00
14+580.00	-16.00	16.00	16+765.53	-105.00	* 20.00
14+580.00	-30.00		16+800.69	* -100.00	* 20.00
14+610.84	-30.00	14.00	16+819.98	* -100.00	
14+670.84	-28.00	* 12.00	16+870.00	-30.00	
14+720.00		22.00	16+945.69	-30.00	* 20.00
14+740.00	-30.00	* 22.00	17+020.37	-38.00	* 20.00
14+780.00	-34.00		17+040.00	* -45.00	
14+800.00	-31.00	16.00	17+080.38		* 20.00
14+840.00		* 20.00	17+090.88	* -45.00	* 20.00
14+880.00		20.00	17+150.87	* -48.00	* 20.00
14+945.00	-58.00		17+199.30	* -45.00	* 20.00
14+945.00	-35.00		17+260.26	-45.00	* 21.00
14+975.54		14.00			

DRAWN BY: R. SCOTT DATE: 3/25/03
 CHECKED BY: J. SCOTT DRAWING NO.: 1
 JOB NO.: 45 SHEET 9 OF 10

M.P. 13.45 - 13.76
CO. RD. # 1

13451376