

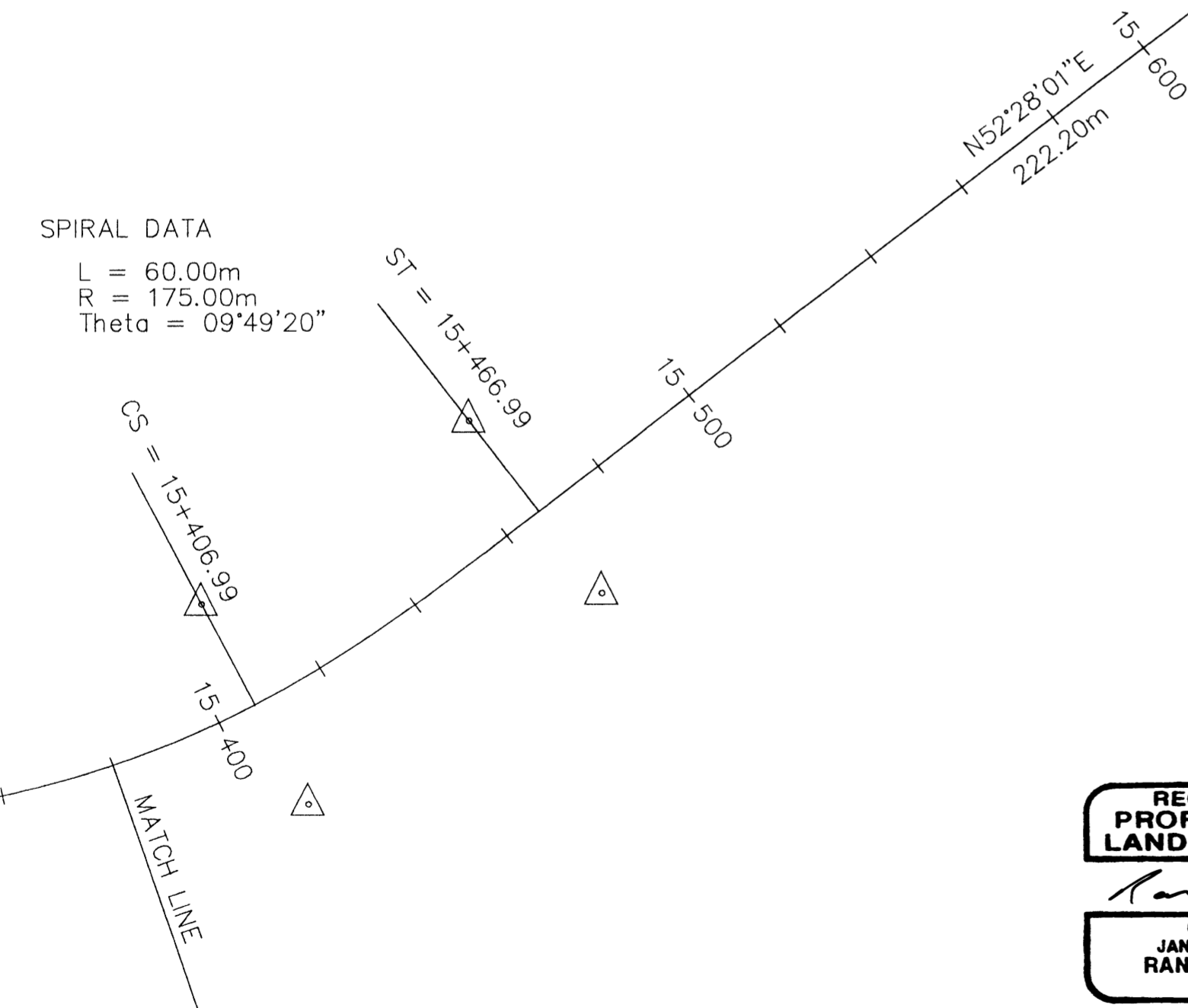
FILED  
 Date: 11/3/2003 By: JP  
 This survey consists of:  
 Map: \_\_\_\_\_  
 Narrative: \_\_\_\_\_  
 Corner Rpt: \_\_\_\_\_  
**DOUGLAS COUNTY**  
**SURVEYOR**

CANYONVILLE – TRAIL HIGHWAY  
 RIGHT OF WAY MONUMENTATION SURVEY CONTINUED  
 DOUGLAS COUNTY ROUTE NO. 1

LEGEND

- △ SET 5/8"x 30" REBAR/CAP AT DISTANCE AND LOCATION PER TABLE "A"  
CAP STAMPED: DOUGLAS CO RD DPT, R-W
- SET 5/8"x 30" REFERENCE MON./CAP DUE TO OBSTRUCTION, ON LINE  
AT DISTANCE AND LOCATION SHOWN ON THESE DRAWINGS  
CAP STAMPED: DOUGLAS CO RD DPT, RP
- INDICATES APPROX. SECTION LINE LOCATION
- PT INDICATES POINT OF TANGENT
- PS INDICATES POINT OF SPIRAL
- PSC INDICATES POINT OF SPIRAL TO CURVE
- PCS INDICATES POINT OF CURVE TO SPIRAL
- CD INDICATES CHORD DISTANCE
- CB INDICATES CHORD BEARING

SPIRAL DATA  
 L = 60.00m  
 R = 175.00m  
 Theta = 09°49'20"



REGISTERED  
 PROFESSIONAL  
 LAND SURVEYOR

*Randy R. Scott*  
 OREGON  
 JANUARY 15, 1987  
 RANDY R. SCOTT  
 2265

LICENSE EXPIRES 06/30/2004

SPIRAL DATA  
 L = 60.00m  
 R = 435.00m  
 Theta = 03°57'05"

CURVE DATA  
 Δ = 09°43'46"  
 R = 435.00m  
 L = 73.87m  
 CD = 73.78m  
 CB = N61°16'59"E

TABLE "A"

NOTE: THE INFORMATION SHOWN BELOW WAS PROVIDED BY FED. HWY.  
 DISTANCES SHOWN ARE FROM R.O.W. CENTER LINE  
 A NEGATIVE OFFSET DISTANCE INDICATES LEFT OF CENTER LINE  
 AN ASTERISK INDICATES MONUMENT NOT SET AT OFFSET DISTANCE  
 SHOWN IN TABLE "A". SEE DRAWING FOR REFERENCE MONUMENT DISTANCE.

R.O.W. STATION	OFFSET	OFFSET	R.O.W. STATION	OFFSET	OFFSET
12+484.82	-12.00	12.00	15+000.00	-60.00	
12+574.82	-12.00	12.00	15+010.00	-20.00	
12+613.00	-14.00	12.00	15+020.54	-20.00	14.00
12+703.00	-14.00	12.00	15+060.00	-20.00	
12+740.00	-12.00	14.00	15+093.52	-25.00	14.00
12+780.00		12.00	15+138.58		12.00
12+820.00	-12.00		15+140.32	-25.00	
12+860.00	-16.00		15+200.36	-30.00	14.00
12+949.90		12.00	15+220.00		14.00
13+009.90	-16.00	12.00	15+260.00	-30.00	
13+040.00	-14.00		15+300.00	-28.00	
13+111.62	-14.00	24.00	15+340.00	-28.00	
13+171.62	-14.00	12.00	15+406.99	-20.00	20.00
13+251.93	-14.00	12.00	15+466.99	-20.00	18.00
13+280.00	-12.00		15+689.19	-20.00	18.00
13+311.93	-12.00	16.00	15+749.19	-16.00	18.00
13+340.00	-12.00	12.00	15+823.06	-16.00	18.00
13+365.06	-16.00	12.00	15+883.06	-16.00	20.00
13+425.06	-16.00	12.00	15+920.00	-18.00	
13+500.00	-16.00		15+960.00	-12.00	
13+553.70	-14.00	12.00	16+070.01	-12.00	16.00
13+613.70	-14.00	12.00	16+130.01	-12.00	14.00
13+689.08	-14.00	12.00	16+131.71	-12.00	14.00
13+749.08	-18.00	12.00	16+191.71	-12.00	16.00
13+772.79	-18.00	14.00	16+227.04	-12.00	16.00
13+852.80	-18.00	14.00	16+287.04	-12.00	* 20.00
14+120.00		14.00	16+354.28	-14.00	* 20.00
14+140.00	-18.00	16.00	16+414.28	-14.00	* 20.00
14+240.00	-42.00	16.00	16+508.27	-14.00	* 20.00
14+280.00		20.00	16+520.00	* -35.00	
14+380.00		20.00	16+553.27	-35.00	* 20.00
14+400.00	-16.00		16+566.81	-35.00	* 20.00
14+420.00		16.00	16+566.81	-55.00	
14+460.00		12.00	16+611.81	-115.00	* 20.00
14+540.00		* 12.00	16+720.53	-110.00	* 20.00
14+580.00	-16.00	16.00	16+765.53	-105.00	* 20.00
14+580.00	-30.00		16+800.69	* -100.00	* 20.00
14+610.84	-30.00	14.00	16+819.98	* -100.00	
14+670.84	-28.00	* 12.00	16+870.00	-30.00	
14+720.00		* 22.00	16+945.69	-30.00	* 20.00
14+740.00	-30.00	* 22.00	17+020.37	-38.00	* 20.00
14+780.00	-34.00		17+040.00	* -45.00	
14+800.00	-31.00	16.00	17+080.38		* 20.00
14+840.00		* 20.00	17+090.88	* -45.00	* 20.00
14+880.00		20.00	17+150.87	* -48.00	* 20.00
14+945.00	-58.00		17+199.30	* -45.00	* 20.00
14+945.00	-35.00		17+260.26	-45.00	* 21.00
14+975.54		14.00			

DRAWN BY: R. SCOTT	DATE: 3/25/03
CHECKED BY: J. SCOTT	DRAWING NO.: 1
JOB NO.: 45	SHEET 7 OF 10

M.P. 12.81 - 13.16

CO. RD. # 1

12811316