

CANYONVILLE – TRAIL HIGHWAY – RIGHT OF WAY MONUMENTATION SURVEY DOUGLAS COUNTY ROUTE NO. 1

LOCATED IN THE W 1/2 OF SEC. 15, SE 1/4 OF SEC. 16, THE NE 1/4 OF SEC. 21, THE N 1/2 OF SEC. 22, THE SW 1/4 SEC. 14, AND THE NW 1/4 SEC. 23 T. 30 S., R. 04 W., W.M., DOUGLAS, CO. OREGON

FOR: FEDERAL HIGHWAY ADMINISTRATION
TOM SUTTON, PROJECT ENGINEER
CANYONVILLE, OR 97417
PHONE# 541-839-4769

BY: NORTHWEST CONSTRUCTION SURVEYING
931 NW HIGHLAND ST.
ROSEBURG, OR 97470
PHONE# 541-672-7411

FILED
Date: 11/3/2003 By: JP
This survey consists of:
Map: _____
Narrative: _____
Corner Rpt: _____

**DOUGLAS COUNTY
SURVEYOR**

LEGEND

△ SET 5/8"x 30" REBAR/CAP AT DISTANCE AND LOCATION PER TABLE "A"
CAP STAMPED: DOUGLAS CO RD DPT, R-W

⊙ SET 5/8"x 30" REFERENCE MON./CAP DUE TO OBSTRUCTION, ON LINE
AT DISTANCE AND LOCATION SHOWN ON THESE DRAWINGS
CAP STAMPED: DOUGLAS CO RD DPT, RP

— INDICATES APPROX. SECTION LINE LOCATION

PT INDICATES POINT OF TANGENT

PS INDICATES POINT OF SPIRAL

PSC INDICATES POINT OF SPIRAL TO CURVE

PCS INDICATES POINT OF CURVE TO SPIRAL

CD INDICATES CHORD DISTANCE

CB INDICATES CHORD BEARING

TABLE "A"

NOTE: THE INFORMATION SHOWN BELOW WAS PROVIDED BY FED. HWY.
DISTANCES SHOWN ARE FROM R.O.W. CENTER LINE
A NEGATIVE OFFSET DISTANCE INDICATES LEFT OF CENTER LINE
AN ASTERISK INDICATES MONUMENT NOT SET AT OFFSET DISTANCE
SHOWN IN TABLE "A". SEE DRAWING FOR REFERENCE MONUMENT DISTANCE.

R.O.W. STATION	OFFSET	OFFSET	R.O.W. STATION	OFFSET	OFFSET
12+484.82	-12.00	12.00	15+000.00	-60.00	
12+574.82	-12.00	12.00	15+010.00	-20.00	
12+613.00	-14.00	12.00	15+020.54	-20.00	14.00
12+703.00	-14.00	12.00	15+060.00	-20.00	
12+740.00	-12.00	14.00	15+093.52	-25.00	14.00
12+780.00		12.00	15+138.58		12.00
12+820.00	-12.00		15+140.32	-25.00	
12+860.00	-16.00		15+200.36	-30.00	14.00
12+949.90		12.00	15+220.00		14.00
13+009.90	-16.00	12.00	15+260.00	-30.00	20.00
13+040.00	-14.00		15+300.00	-28.00	
13+111.62	-14.00	24.00	15+340.00	-28.00	
13+171.62	-14.00	20.00	15+406.99	-20.00	20.00
13+251.93	-14.00	12.00	15+466.99	-20.00	18.00
13+280.00	-12.00		15+689.19	-20.00	18.00
13+311.93	-12.00	16.00	15+749.19	-16.00	18.00
13+340.00	-12.00	12.00	15+823.06	-16.00	18.00
13+365.06	-16.00	12.00	15+883.06	-16.00	20.00
13+425.06	-16.00	12.00	15+920.00	-18.00	
13+500.00	-16.00		15+960.00	-12.00	
13+553.70	-14.00	12.00	16+070.01	-12.00	16.00
13+613.70	-14.00	12.00	16+130.01	-12.00	14.00
13+689.08	-14.00	12.00	16+131.71	-12.00	14.00
13+749.08	-18.00	12.00	16+191.71	-12.00	16.00
13+772.79	-18.00	14.00	16+227.04	-12.00	16.00
13+852.80	-18.00	14.00	16+287.04	-12.00	* 20.00
14+120.00		14.00	16+354.28	-14.00	* 20.00
14+140.00	-18.00	16.00	16+414.28	-14.00	* 20.00
14+240.00	-42.00	16.00	16+508.27	-14.00	* 20.00
14+280.00		20.00	16+520.00	* -35.00	
14+380.00		20.00	16+553.27	-35.00	* 20.00
14+400.00	-16.00		16+566.81	-35.00	* 20.00
14+420.00		16.00	16+566.81	-55.00	
14+460.00		12.00	16+611.81	-115.00	* 20.00
14+540.00		* 12.00	16+720.53	-110.00	* 20.00
14+580.00	-16.00	16.00	16+765.53	-105.00	* 20.00
14+580.00	-30.00		16+800.69	* -100.00	* 20.00
14+610.84	-30.00	14.00	16+819.98	* -100.00	
14+670.84	-28.00	* 12.00	16+870.00	-30.00	
14+720.00		22.00	16+945.69	-30.00	* 20.00
14+740.00	-30.00	* 22.00	17+020.37	-38.00	* 20.00
14+780.00	-34.00		17+040.00	* -45.00	
14+800.00	-31.00	16.00	17+080.38		* 20.00
14+840.00		* 20.00	17+090.88	* -45.00	* 20.00
14+880.00		20.00	17+150.87	* -48.00	* 20.00
14+945.00	-58.00		17+199.30	* -45.00	* 20.00
14+945.00	-35.00		17+260.26	-45.00	* 21.00
14+975.54		14.00			

TS = 12+484.82

SPIRAL DATA
L = 90.00m
R = 435.00m
Theta = 05°55'38"

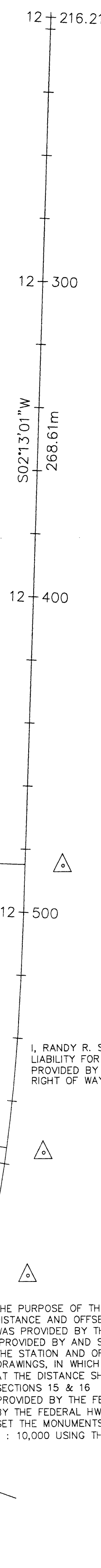
SC = 12+574.82
CURVE DATA
Δ = 05°01'42"
R = 435.00m
CD = 38.16m
CB = S10°39'30"W

CS = 12+613.00

SPIRAL DATA
L = 90.00m
R = 435.00m
Theta = 05°55'38"

MATCH LINE

ST = 12+703.00



1 : 1000
THIS IS A METRIC SURVEY
1 cm. = 10 m

SECTION 10

SECTION 15

DISCLAIMER

I, RANDY R. SCOTT, PROFESSIONAL LAND SURVEYOR IN THE STATE OF OREGON, ASSUME NO LIABILITY FOR THIS RIGHT OF WAY SURVEY. ALL CONTROL AND RIGHT OF WAY DATA WAS PROVIDED BY THE FEDERAL HIGHWAY DEPARTMENT. I WAS NOT INVOLVED IN ANY OF THE RIGHT OF WAY RESEARCH OR THE CONTROL NETWORK.

Randy R. Scott
RANDY R. SCOTT P.L.S.

NARRATIVE

THE PURPOSE OF THIS SURVEY WAS TO SET RIGHT OF WAY MONUMENTS AT THE DISTANCE AND OFFSET SHOWN IN TABLE "A". THE INFORMATION SHOWN IN TABLE "A" WAS PROVIDED BY THE FEDERAL HIGHWAY DEPARTMENT. 5/8" REBAR AND CAPS (PROVIDED BY AND STAMPED: DOUGLAS COUNTY ROAD DEPARTMENT) WERE SET AT THE STATION AND OFFSETS SHOWN IN TABLE "A" UNLESS OTHERWISE NOTED PER THESE DRAWINGS, IN WHICH CASE A REFERENCE MONUMENT WAS SET RADIAL / PERPENDICULAR AT THE DISTANCE SHOWN. A CALCULATED TIE TO THE S.W. 1/16 CORNER BETWEEN SECTIONS 15 & 16 IS SHOWN ON SHEET NO. 4. THIS TIE WAS CALCULATED FROM COORDINATES PROVIDED BY THE FEDERAL HWY. DEPARTMENT. THE CONTROL & R.O.W. CENTER LINE DATA WAS ALSO PROVIDED BY THE FEDERAL HWY. DEPARTMENT. A TRIMBLE 5600 ROBOTIC INSTRUMENT WAS USED TO SET THE MONUMENTS. ALL MONUMENTS WERE SET WITHIN THE REQUIRED ACCURACY OF 1 : 10,000 USING THE DATA PROVIDED.

**REGISTERED
PROFESSIONAL
LAND SURVEYOR**

Randy R. Scott
**OREGON
JANUARY 15, 1987
RANDY R. SCOTT
2265**

LICENSE EXPIRES 06/30/2004

DRAWN BY: <u>R. SCOTT</u>	DATE: <u>3/25/03</u>
CHECKED BY: <u>J. SCOTT</u>	DRAWING NO.: <u>1</u>
JOB NO.: <u>45</u>	SHEET <u>1</u> OF <u>10</u>

M.P. 10.82 - 11.13

CO. RD. # 1

10821113

CANYONVILLE - TRAIL HIGHWAY
 RIGHT OF WAY MONUMENTATION SURVEY CONTINUED
 DOUGLAS COUNTY ROUTE NO. 1

FILED
 Date: 11/3/2003 By: J.P.
 This survey consists of:
 Map:
 Narrative:
 Corner Rpt:
 DOUGLAS COUNTY
 SURVEYOR

1 : 1000
 THIS IS A METRIC SURVEY
 1 cm. = 10 m

LEGEND

- △ SET 5/8"x 30" REBAR/CAP AT DISTANCE AND LOCATION PER TABLE "A"
 CAP STAMPED: DOUGLAS CO RD DPT, R-W
- SET 5/8"x 30" REFERENCE MON./CAP DUE TO OBSTRUCTION, ON LINE
 AT DISTANCE AND LOCATION SHOWN ON THESE DRAWINGS
 CAP STAMPED: DOUGLAS CO RD DPT, RP
- INDICATES APPROX. SECTION LINE LOCATION
- PT INDICATES POINT OF TANGENT
- PS INDICATES POINT OF SPIRAL
- PSC INDICATES POINT OF SPIRAL TO CURVE
- PCS INDICATES POINT OF CURVE TO SPIRAL
- CD INDICATES CHORD DISTANCE
- CB INDICATES CHORD BEARING

TS = 12+949.90

SPIRAL DATA
 L = 60.00m
 R = 435.00m
 Theta = 03°57'05"

SC = 13+009.90

CURVE DATA
 Δ = 13°23'54"
 R = 435.00m
 L = 101.72m
 CD = 101.49m
 CB = S29°45'01"W

SPIRAL DATA
 L = 60.00m
 R = 435.00m
 Theta = 03°57'05"

ST = 13+171.62

MATCH LINE
 S40°24'04"W
 80.31m

TS = 13+251.93

TABLE "A"
 NOTE: THE INFORMATION SHOWN BELOW WAS PROVIDED BY FED. HWY.
 DISTANCES SHOWN ARE FROM R.O.W. CENTER LINE
 A NEGATIVE OFFSET DISTANCE INDICATES LEFT OF CENTER LINE
 AN ASTERISK INDICATES MONUMENT NOT SET AT OFFSET DISTANCE
 SHOWN IN TABLE "A". SEE DRAWING FOR REFERENCE MONUMENT DISTANCE.

R.O.W. STATION	OFFSET	OFFSET	R.O.W. STATION	OFFSET	OFFSET
12+484.82	-12.00	12.00	15+000.00	-60.00	
12+574.82	-12.00	12.00	15+010.00	-20.00	
12+613.00	-14.00	12.00	15+020.54	-20.00	14.00
12+703.00	-14.00	12.00	15+060.00	-20.00	
12+740.00	-12.00	14.00	15+093.52	-25.00	14.00
12+780.00		12.00	15+138.58		12.00
12+820.00	-12.00		15+140.32	-25.00	
12+860.00	-16.00		15+200.36	-30.00	14.00
12+949.90		12.00	15+220.00		14.00
13+009.90	-16.00	12.00	15+260.00	-30.00	20.00
13+040.00	-14.00		15+300.00	-28.00	
13+111.62	-14.00	24.00	15+340.00	-28.00	
13+171.62	-14.00	20.00	15+406.99	-20.00	20.00
13+251.93	-14.00	12.00	15+466.99	-20.00	18.00
13+280.00	-12.00		15+689.19	-20.00	18.00
13+311.93	-12.00	16.00	15+749.19	-16.00	18.00
13+340.00	-12.00	12.00	15+823.06	-16.00	18.00
13+365.06	-16.00	12.00	15+883.06	-16.00	20.00
13+425.06	-16.00	12.00	15+920.00	-18.00	
13+500.00	-16.00		15+960.00	-12.00	
13+553.70	-14.00	12.00	16+070.01	-12.00	16.00
13+613.70	-14.00	12.00	16+130.01	-12.00	14.00
13+689.08	-14.00	12.00	16+131.71	-12.00	14.00
13+749.08	-18.00	12.00	16+191.71	-12.00	16.00
13+772.79	-18.00	14.00	16+227.04	-12.00	16.00
13+852.80	-18.00	14.00	16+287.04	-12.00	* 20.00
14+120.00		14.00	16+354.28	-14.00	* 20.00
14+140.00	-18.00	16.00	16+414.28	-14.00	* 20.00
14+240.00	-42.00	16.00	16+508.27	-14.00	* 20.00
14+280.00		20.00	16+520.00	* -35.00	
14+380.00		20.00	16+553.27	-35.00	* 20.00
14+400.00	-16.00		16+566.81	-35.00	* 20.00
14+420.00		16.00	16+566.81	-55.00	
14+460.00		12.00	16+611.81	-115.00	* 20.00
14+540.00		* 12.00	16+720.53	-110.00	* 20.00
14+580.00	-16.00	16.00	16+765.53	-105.00	* 20.00
14+580.00	-30.00		16+800.69	* -100.00	* 20.00
14+610.84	-30.00	14.00	16+819.98	* -100.00	
14+670.84	-28.00	* 12.00	16+870.00	-30.00	
14+720.00		22.00	16+945.69	-30.00	* 20.00
14+740.00	-30.00	* 22.00	17+020.37	-38.00	* 20.00
14+780.00	-34.00		17+040.00	* -45.00	
14+800.00	-31.00	16.00	17+080.38		* 20.00
14+840.00		* 20.00	17+090.88	* -45.00	* 20.00
14+880.00		20.00	17+150.87	* -48.00	* 20.00
14+945.00	-58.00		17+199.30	* -45.00	* 20.00
14+945.00	-35.00		17+260.26	-45.00	* 21.00
14+975.54		14.00			

REGISTERED
 PROFESSIONAL
 LAND SURVEYOR
Randy R. Scott
 OREGON
 JANUARY 15, 1987
 RANDY R. SCOTT
 2265

LICENSE EXPIRES 06/30/2004

DRAWN BY: R. SCOTT	DATE: 3/25/03
CHECKED BY: J. SCOTT	DRAWING NO.: 1
JOB NO.: 45	SHEET 2 OF 10

M.P. 11.13 - 11.47

CO. RD. # 1

11131147

FILED
 Date: 11/3/2003 By: JP
 This survey consists of:
 Map:
 Narrative:
 Corner Rpt:

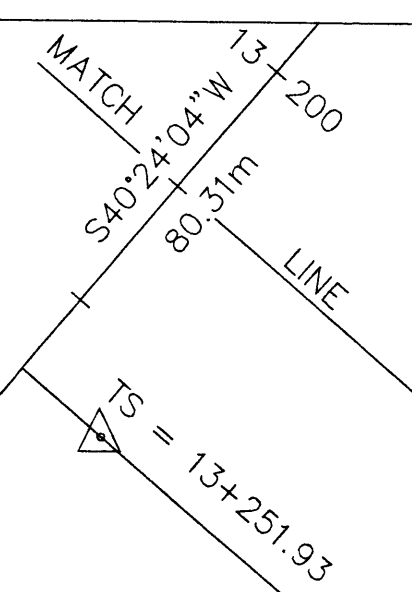
DOUGLAS COUNTY
 SURVEYOR

CANYONVILLE - TRAIL HIGHWAY
 RIGHT OF WAY MONUMENTATION SURVEY CONTINUED
 DOUGLAS COUNTY ROUTE NO. 1

LEGEND

- △ SET 5/8" x 30" REBAR/CAP AT DISTANCE AND LOCATION PER TABLE "A"
 CAP STAMPED: DOUGLAS CO RD DPT, R-W
- SET 5/8" x 30" REFERENCE MON./CAP DUE TO OBSTRUCTION, ON LINE
 AT DISTANCE AND LOCATION SHOWN ON THESE DRAWINGS
 CAP STAMPED: DOUGLAS CO RD DPT, RP
- INDICATES APPROX. SECTION LINE LOCATION
- PT INDICATES POINT OF TANGENT
- PS INDICATES POINT OF SPIRAL
- PSC INDICATES POINT OF SPIRAL TO CURVE
- PCS INDICATES POINT OF CURVE TO SPIRAL
- CD INDICATES CHORD DISTANCE
- CB INDICATES CHORD BEARING

SECTION 16
 SECTION 15



SPIRAL DATA
 L = 60.00m
 R = 435.00m
 Theta = 03°57'05"

CURVE DATA
 Δ = 06°59'53"
 L = 435.00m
 CD = 53.13m
 CB = S 32°57'02" W

SPIRAL DATA
 L = 60.00m
 R = 435.00m
 Theta = 03°57'05"

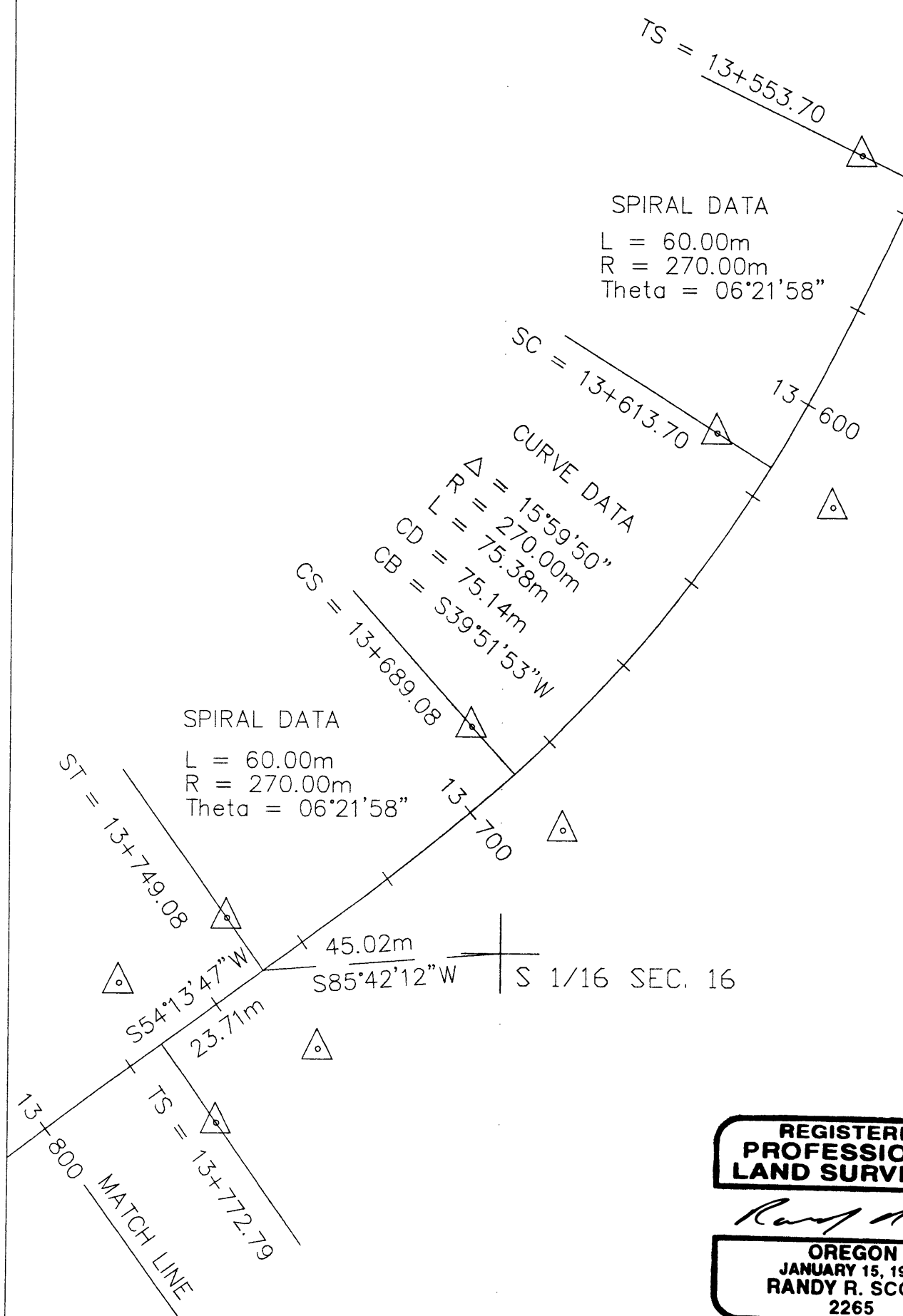


1 : 1000
 THIS IS A METRIC SURVEY
 1 cm. = 10 m

TABLE "A"

NOTE: THE INFORMATION SHOWN BELOW WAS PROVIDED BY FED. HWY.
 DISTANCES SHOWN ARE FROM R.O.W. CENTER LINE
 A NEGATIVE OFFSET DISTANCE INDICATES LEFT OF CENTER LINE
 AN ASTERISK INDICATES MONUMENT NOT SET AT OFFSET DISTANCE
 SHOWN IN TABLE "A". SEE DRAWING FOR REFERENCE MONUMENT DISTANCE.

R.O.W. STATION	OFFSET	OFFSET	R.O.W. STATION	OFFSET	OFFSET
12+484.82	-12.00	12.00	15+000.00	-60.00	
12+574.82	-12.00	12.00	15+010.00	-20.00	
12+613.00	-14.00	12.00	15+020.54	-20.00	14.00
12+703.00	-14.00	12.00	15+060.00	-20.00	
12+740.00	-12.00	14.00	15+093.52	-25.00	14.00
12+780.00		12.00	15+138.58		12.00
12+820.00	-12.00		15+140.32	-25.00	
12+860.00	-16.00		15+200.36	-30.00	14.00
12+949.90		12.00	15+220.00		14.00
13+009.90	-16.00	12.00	15+260.00	-30.00	20.00
13+040.00	-14.00		15+300.00	-28.00	
13+111.62	-14.00	24.00	15+340.00	-28.00	
13+171.62	-14.00	20.00	15+406.99	-20.00	20.00
13+251.93	-14.00	12.00	15+466.99	-20.00	18.00
13+280.00	-12.00		15+689.19	-20.00	18.00
13+311.93	-12.00	16.00	15+749.19	-16.00	18.00
13+340.00	-12.00	12.00	15+823.06	-16.00	18.00
13+365.06	-16.00	12.00	15+883.06	-16.00	20.00
13+425.06	-16.00	12.00	15+920.00	-18.00	
13+500.00	-16.00		15+960.00	-12.00	
13+553.70	-14.00	12.00	16+070.01	-12.00	16.00
13+613.70	-14.00	12.00	16+130.01	-12.00	14.00
13+689.08	-14.00	12.00	16+131.71	-12.00	14.00
13+749.08	-18.00	12.00	16+191.71	-12.00	16.00
13+772.79	-18.00	14.00	16+227.04	-12.00	16.00
13+852.80	-18.00	14.00	16+287.04	-12.00	* 20.00
14+120.00		14.00	16+354.28	-14.00	* 20.00
14+140.00	-18.00	16.00	16+414.28	-14.00	* 20.00
14+240.00	-42.00	16.00	16+508.27	-14.00	* 20.00
14+280.00		20.00	16+520.00	* -35.00	
14+380.00		20.00	16+553.27	-35.00	* 20.00
14+400.00	-16.00		16+566.81	-35.00	* 20.00
14+420.00		16.00	16+566.81	-55.00	
14+460.00		12.00	16+611.81	-115.00	* 20.00
14+540.00		* 12.00	16+720.53	-110.00	* 20.00
14+580.00	-16.00	16.00	16+765.53	-105.00	* 20.00
14+580.00	-30.00		16+800.69	* -100.00	* 20.00
14+610.84	-30.00	14.00	16+819.98	* -100.00	
14+670.84	-28.00	* 12.00	16+870.00	-30.00	
14+720.00		22.00	16+945.69	-30.00	* 20.00
14+740.00	-30.00	* 22.00	17+020.37	-38.00	* 20.00
14+780.00	-34.00		17+040.00	* -45.00	
14+800.00	-31.00	16.00	17+080.38		* 20.00
14+840.00		* 20.00	17+090.88	* -45.00	* 20.00
14+880.00		20.00	17+150.87	* -48.00	* 20.00
14+945.00	-58.00		17+199.30	* -45.00	* 20.00
14+945.00	-35.00		17+260.26	-45.00	* 21.00
14+975.54		14.00			



REGISTERED
 PROFESSIONAL
 LAND SURVEYOR
 RANDY R. SCOTT
 2265

LICENSE EXPIRES 06/30/2004

DRAWN BY: R. SCOTT	DATE: 3/25/03
CHECKED BY: J. SCOTT	DRAWING NO.: 1
JOB NO.: 45	SHEET 3 OF 10

11471181

M.P. 11.47 - 11.81

CO. RD. # 1

CANYONVILLE - TRAIL HIGHWAY
 RIGHT OF WAY MONUMENTATION SURVEY CONTINUED
 DOUGLAS COUNTY ROUTE NO. 1

LEGEND

- △ SET 5/8"x 30" REBAR/CAP AT DISTANCE AND LOCATION PER TABLE "A"
CAP STAMPED: DOUGLAS CO RD DPT, R-W
- SET 5/8"x 30" REFERENCE MON./CAP DUE TO OBSTRUCTION, ON LINE
AT DISTANCE AND LOCATION SHOWN ON THESE DRAWINGS
CAP STAMPED: DOUGLAS CO RD DPT, RP
- INDICATES APPROX. SECTION LINE LOCATION
- PT INDICATES POINT OF TANGENT
- PS INDICATES POINT OF SPIRAL
- PSC INDICATES POINT OF SPIRAL TO CURVE
- PCS INDICATES POINT OF CURVE TO SPIRAL
- CD INDICATES CHORD DISTANCE
- CB INDICATES CHORD BEARING

FILED
 Date: 11/3/2003 By: JP
 This survey consists of:
 Map _____
 Narrative: _____
 Corner Rpt: _____

DOUGLAS COUNTY
 SURVEYOR

SPIRAL DATA
 L = 60.00m
 R = 270.00m
 Theta = 06°21'58"

SPIRAL DATA
 L = 80.01m
 R = 385.00m
 Theta = 05°57'13"

CURVE DATA
 Δ = 112°48'44"
 R = 385.00m
 L = 758.04m
 CD = 641.39m
 CB = S08°07'48"E

TABLE "A"

NOTE: THE INFORMATION SHOWN BELOW WAS PROVIDED BY FED. HWY.
 DISTANCES SHOWN ARE FROM R.O.W. CENTER LINE
 A NEGATIVE OFFSET DISTANCE INDICATES LEFT OF CENTER LINE
 AN ASTERISK INDICATES MONUMENT NOT SET AT OFFSET DISTANCE
 SHOWN IN TABLE "A". SEE DRAWING FOR REFERENCE MONUMENT DISTANCE.

R.O.W. STATION	OFFSET	OFFSET	R.O.W. STATION	OFFSET	OFFSET
12+484.82	-12.00	12.00	15+000.00	-60.00	
12+574.82	-12.00	12.00	15+010.00	-20.00	
12+613.00	-14.00	12.00	15+020.54	-20.00	14.00
12+703.00	-14.00	12.00	15+060.00	-20.00	
12+740.00	-12.00	14.00	15+093.52	-25.00	14.00
12+780.00		12.00	15+138.58		12.00
12+820.00	-12.00		15+140.32	-25.00	
12+860.00	-16.00		15+200.36	-30.00	14.00
12+949.90		12.00	15+220.00		14.00
13+009.90	-16.00	12.00	15+260.00	-30.00	20.00
13+040.00	-14.00		15+300.00	-28.00	
13+111.62	-14.00	24.00	15+340.00	-28.00	
13+171.62	-14.00	20.00	15+406.99	-20.00	20.00
13+251.93	-14.00	12.00	15+466.99	-20.00	18.00
13+280.00	-12.00		15+689.19	-20.00	18.00
13+311.93	-12.00	16.00	15+749.19	-16.00	18.00
13+340.00	-12.00	12.00	15+823.06	-16.00	18.00
13+365.06	-16.00	12.00	15+883.06	-16.00	20.00
13+425.06	-16.00	12.00	15+920.00	-18.00	
13+500.00	-16.00		15+960.00	-12.00	
13+553.70	-14.00	12.00	16+070.01	-12.00	16.00
13+613.70	-14.00	12.00	16+130.01	-12.00	14.00
13+689.08	-14.00	12.00	16+131.71	-12.00	14.00
13+749.08	-18.00	12.00	16+191.71	-12.00	16.00
13+772.79	-18.00	14.00	16+227.04	-12.00	16.00
13+852.80	-18.00	14.00	16+287.04	-12.00	* 20.00
14+120.00		14.00	16+354.28	-14.00	* 20.00
14+140.00	-18.00	16.00	16+414.28	-14.00	* 20.00
14+240.00	-42.00	16.00	16+508.27	-14.00	* 20.00
14+280.00		20.00	16+520.00	* -35.00	
14+380.00		20.00	16+553.27	-35.00	* 20.00
14+400.00	-16.00		16+566.81	-35.00	* 20.00
14+420.00		16.00	16+566.81	-55.00	
14+460.00		12.00	16+611.81	-115.00	* 20.00
14+540.00		* 12.00	16+720.53	-110.00	* 20.00
14+580.00	-16.00	16.00	16+765.53	-105.00	* 20.00
14+580.00	-30.00		16+800.69	* -100.00	* 20.00
14+610.84	-30.00	14.00	16+819.98	* -100.00	
14+670.84	-28.00	* 12.00	16+870.00	-30.00	
14+720.00	-30.00	* 22.00	16+945.69	-30.00	* 20.00
14+740.00	-30.00	* 22.00	17+020.37	-38.00	* 20.00
14+780.00	-34.00		17+040.00	* -45.00	
14+800.00	-31.00	16.00	17+080.38		* 20.00
14+840.00		* 20.00	17+090.88	* -45.00	* 20.00
14+880.00		20.00	17+150.87	* -48.00	* 20.00
14+945.00	-58.00		17+199.30	* -45.00	* 20.00
14+945.00	-35.00		17+260.26	-45.00	* 21.00
14+975.54		14.00			

SECTION 16
 SECTION 15

16 | 15
 21 | 22

REGISTERED
 PROFESSIONAL
 LAND SURVEYOR

Randy R. Scott
 OREGON
 JANUARY 15, 1987
 RANDY R. SCOTT
 2265

LICENSE EXPIRES 06/30/2004

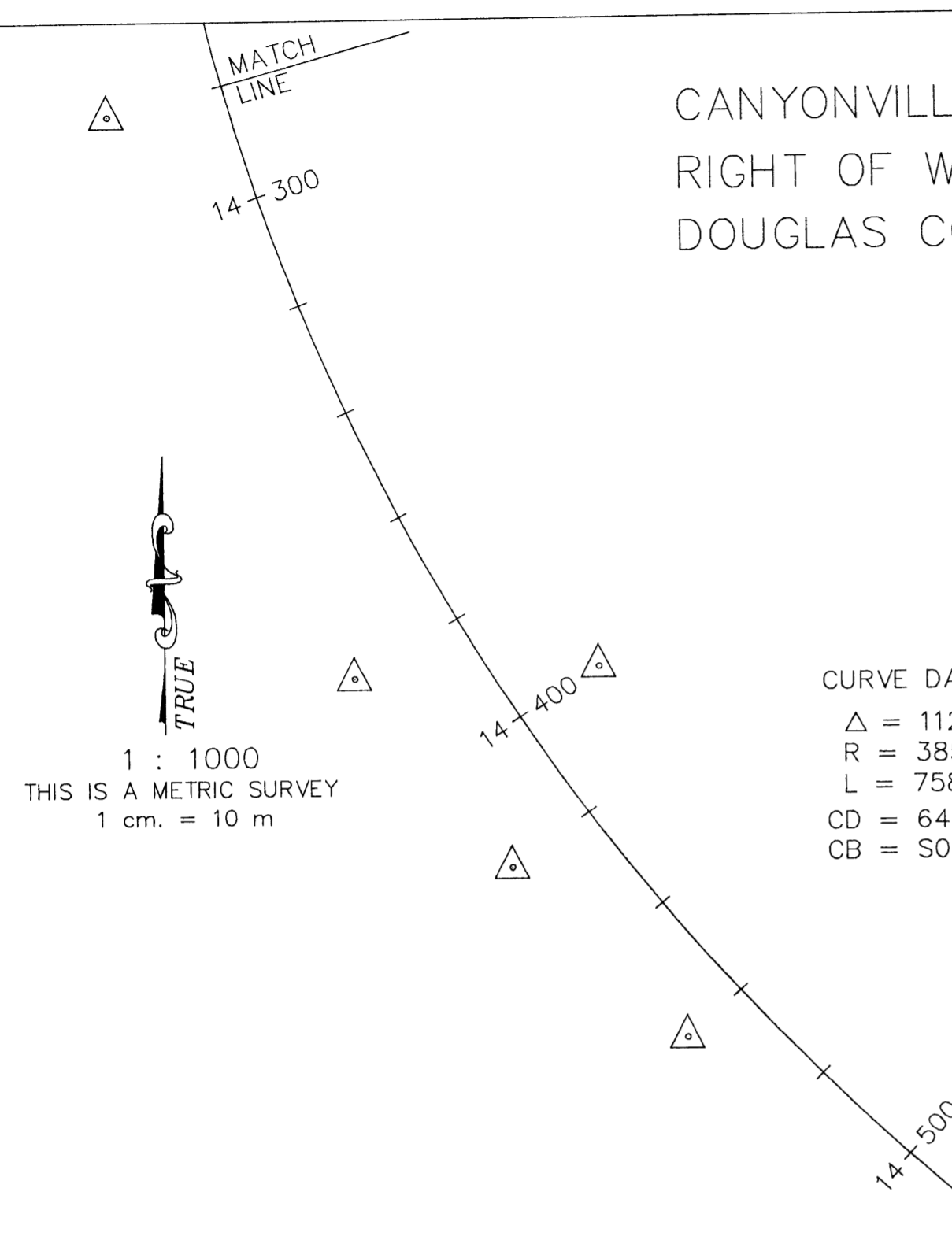
DRAWN BY: R. SCOTT	DATE: 3/25/03
CHECKED BY: J. SCOTT	DRAWING NO.: 1
JOB NO.: 45	SHEET 4 OF 10

M.P. 11.81 - 12.12

11811212

CO. RD. # 1

CANYONVILLE - TRAIL HIGHWAY
 RIGHT OF WAY MONUMENTATION SURVEY CONTINUED
 DOUGLAS COUNTY ROUTE NO. 1



CURVE DATA
 $\Delta = 112^{\circ}48'44''$
 $R = 385.00m$
 $L = 758.04m$
 $CD = 641.39m$
 $CB = S08^{\circ}07'48''E$

SPIRAL DATA
 $L = 60.00m$
 $R = 385.00m$
 $\text{Theta} = 04^{\circ}27'53''$

- LEGEND**
- \triangle SET 5/8"x 30" REBAR/CAP AT DISTANCE AND LOCATION PER TABLE "A"
CAP STAMPED: DOUGLAS CO RD DPT, R-W
 - \bullet SET 5/8"x 30" REFERENCE MON./CAP DUE TO OBSTRUCTION, ON LINE
AT DISTANCE AND LOCATION SHOWN ON THESE DRAWINGS
CAP STAMPED: DOUGLAS CO RD DPT, RP
 - INDICATES APPROX. SECTION LINE LOCATION
 - PT INDICATES POINT OF TANGENT
 - PS INDICATES POINT OF SPIRAL
 - PSC INDICATES POINT OF SPIRAL TO CURVE
 - PCS INDICATES POINT OF CURVE TO SPIRAL
 - CD INDICATES CHORD DISTANCE
 - CB INDICATES CHORD BEARING

TABLE "A"

NOTE: THE INFORMATION SHOWN BELOW WAS PROVIDED BY FED. HWY.
 DISTANCES SHOWN ARE FROM R.O.W. CENTER LINE
 A NEGATIVE OFFSET DISTANCE INDICATES LEFT OF CENTER LINE
 AN ASTERISK INDICATES MONUMENT NOT SET AT OFFSET DISTANCE
 SHOWN IN TABLE "A". SEE DRAWING FOR REFERENCE MONUMENT DISTANCE.

R.O.W. STATION	OFFSET	OFFSET	R.O.W. STATION	OFFSET	OFFSET
12+484.82	-12.00	12.00	15+000.00	-60.00	
12+574.82	-12.00	12.00	15+010.00	-20.00	
12+613.00	-14.00	12.00	15+020.54	-20.00	14.00
12+703.00	-14.00	12.00	15+060.00	-20.00	
12+740.00	-12.00	14.00	15+093.52	-25.00	14.00
12+780.00		12.00	15+138.58		12.00
12+820.00	-12.00		15+140.32	-25.00	
12+860.00	-16.00		15+200.36	-30.00	14.00
12+949.90		12.00	15+220.00		14.00
13+009.90	-16.00	12.00	15+260.00	-30.00	20.00
13+040.00	-14.00		15+300.00	-28.00	
13+111.62	-14.00	24.00	15+340.00	-28.00	
13+171.62	-14.00	20.00	15+406.99	-20.00	20.00
13+251.93	-14.00	12.00	15+466.99	-20.00	18.00
13+280.00	-12.00		15+689.19	-20.00	18.00
13+311.93	-12.00	16.00	15+749.19	-16.00	18.00
13+340.00	-12.00	12.00	15+823.06	-16.00	18.00
13+365.06	-16.00	12.00	15+883.06	-16.00	20.00
13+425.06	-16.00	12.00	15+920.00	-18.00	
13+500.00	-16.00		15+960.00	-12.00	
13+553.70	-14.00	12.00	16+070.01	-12.00	16.00
13+613.70	-14.00	12.00	16+130.01	-12.00	14.00
13+689.08	-14.00	12.00	16+131.71	-12.00	14.00
13+749.08	-18.00	12.00	16+191.71	-12.00	16.00
13+772.79	-18.00	14.00	16+227.04	-12.00	* 20.00
13+852.80	-18.00	14.00	16+287.04	-12.00	* 20.00
14+120.00		14.00	16+354.28	-14.00	* 20.00
14+140.00	-18.00	16.00	16+414.28	-14.00	* 20.00
14+240.00	-42.00	16.00	16+508.27	-14.00	* 20.00
14+280.00		20.00	16+520.00	* -35.00	
14+380.00		20.00	16+553.27	-35.00	* 20.00
14+400.00	-16.00		16+566.81	-35.00	* 20.00
14+420.00		16.00	16+566.81	-55.00	
14+460.00		12.00	16+611.81	-115.00	* 20.00
14+540.00		* 12.00	16+720.53	-110.00	* 20.00
14+580.00	-16.00	16.00	16+765.53	-105.00	* 20.00
14+580.00	-30.00		16+800.69	* -100.00	* 20.00
14+610.84	-30.00	14.00	16+819.98	* -100.00	
14+670.84	-28.00	* 12.00	16+870.00	-30.00	
14+720.00		22.00	16+945.69	-30.00	* 20.00
14+740.00	-30.00	* 22.00	17+020.37	-38.00	* 20.00
14+780.00	-34.00		17+040.00	* -45.00	
14+800.00	-31.00	16.00	17+080.38		* 20.00
14+840.00		* 20.00	17+090.88	* -45.00	* 20.00
14+880.00		20.00	17+150.87	* -48.00	* 20.00
14+945.00	-58.00		17+199.30	* -45.00	* 20.00
14+945.00	-35.00		17+260.26	-45.00	* 21.00
14+975.54		14.00			

FILED
 Date: 11/3/2003 By: JP
 This survey consists of:
 Map: _____
 Narrative: _____
 Corner Rpt: _____

REGISTERED
 PROFESSIONAL
 LAND SURVEYOR
Randy R. Scott
 OREGON
 JANUARY 15, 1987
 RANDY R. SCOTT
 2265

LICENSE EXPIRES 06/30/2004

DRAWN BY: R. SCOTT	DATE: 3/25/03
CHECKED BY: J. SCOTT	DRAWING NO.: 1
JOB NO.: 45	SHEET 5 OF 10

M.P. 12.12 - 12.47

CO. RD. # 1

12121247

CANYONVILLE - TRAIL HIGHWAY
 RIGHT OF WAY MONUMENTATION SURVEY CONTINUED
 DOUGLAS COUNTY ROUTE NO. 1



1 : 1000
 THIS IS A METRIC SURVEY
 1 cm. = 10 m

LEGEND

- △ SET 5/8"x 30" REBAR/CAP AT DISTANCE AND LOCATION PER TABLE "A"
 CAP STAMPED: DOUGLAS CO RD DPT, R-W
- SET 5/8"x 30" REFERENCE MON./CAP DUE TO OBSTRUCTION, ON LINE
 AT DISTANCE AND LOCATION SHOWN ON THESE DRAWINGS
 CAP STAMPED: DOUGLAS CO RD DPT, RP
- INDICATES APPROX. SECTION LINE LOCATION
- PT INDICATES POINT OF TANGENT
- PS INDICATES POINT OF SPIRAL
- PSC INDICATES POINT OF SPIRAL TO CURVE
- PCS INDICATES POINT OF CURVE TO SPIRAL
- CD INDICATES CHORD DISTANCE
- CB INDICATES CHORD BEARING

FILED
 Date: 11/3/2003 By: JP
 This survey consists of:
 Map:
 Narrative:
 Corner Rpt:
DOUGLAS COUNTY SURVEYOR

TABLE "A"

NOTE: THE INFORMATION SHOWN BELOW WAS PROVIDED BY FED. HWY.
 DISTANCES SHOWN ARE FROM R.O.W. CENTER LINE
 A NEGATIVE OFFSET DISTANCE INDICATES LEFT OF CENTER LINE
 AN ASTERISK INDICATES MONUMENT NOT SET AT OFFSET DISTANCE
 SHOWN IN TABLE "A". SEE DRAWING FOR REFERENCE MONUMENT DISTANCE.

R.O.W. STATION	OFFSET	OFFSET	R.O.W. STATION	OFFSET	OFFSET
12+484.82	-12.00	12.00	15+000.00	-60.00	
12+574.82	-12.00	12.00	15+010.00	-20.00	
12+613.00	-14.00	12.00	15+020.54	-20.00	14.00
12+703.00	-14.00	12.00	15+060.00	-20.00	
12+740.00	-12.00	14.00	15+093.52	-25.00	14.00
12+780.00		12.00	15+138.58	-25.00	12.00
12+820.00	-12.00		15+140.32	-25.00	
12+860.00	-16.00		15+200.36	-30.00	14.00
12+949.90		12.00	15+220.00		14.00
13+009.90	-16.00		15+260.00	-30.00	20.00
13+040.00	-14.00		15+300.00	-28.00	
13+111.62	-14.00	24.00	15+340.00	-28.00	
13+171.62	-14.00	20.00	15+406.99	-20.00	20.00
13+251.93	-14.00	12.00	15+466.99	-20.00	18.00
13+280.00	-12.00		15+689.19	-20.00	18.00
13+311.93	-12.00	16.00	15+749.19	-16.00	18.00
13+340.00	-12.00	12.00	15+823.06	-16.00	18.00
13+365.06	-16.00	12.00	15+883.06	-16.00	20.00
13+425.06	-16.00	12.00	15+920.00	-18.00	
13+500.00	-16.00		15+960.00	-12.00	
13+553.70	-14.00	12.00	16+070.01	-12.00	16.00
13+613.70	-14.00	12.00	16+130.01	-12.00	14.00
13+689.08	-14.00	12.00	16+131.71	-12.00	14.00
13+749.08	-18.00	12.00	16+191.71	-12.00	16.00
13+772.79	-18.00	14.00	16+227.04	-12.00	16.00
13+852.80	-18.00	14.00	16+287.04	-12.00	* 20.00
14+120.00		14.00	16+354.28	-14.00	* 20.00
14+140.00	-18.00	16.00	16+414.28	-14.00	* 20.00
14+240.00	-42.00	16.00	16+508.27	-14.00	* 20.00
14+280.00		20.00	16+520.00	* -35.00	
14+380.00		20.00	16+553.27	-35.00	* 20.00
14+400.00	-16.00		16+566.81	-35.00	* 20.00
14+420.00		16.00	16+566.81	-55.00	
14+460.00		12.00	16+611.81	-115.00	* 20.00
14+540.00		* 12.00	16+720.53	-110.00	* 20.00
14+580.00	-16.00	16.00	16+765.53	-105.00	* 20.00
14+580.00	-30.00		16+800.69	* -100.00	* 20.00
14+610.84	-30.00	14.00	16+819.98	* -100.00	
14+670.84	-28.00	* 12.00	16+870.00	-30.00	
14+720.00		22.00	16+945.69	-30.00	* 20.00
14+740.00	-30.00	* 22.00	17+020.37	-38.00	* 20.00
14+780.00	-34.00		17+040.00	* -45.00	
14+800.00	-31.00		17+080.38		* 20.00
14+840.00		* 20.00	17+090.88	* -45.00	* 20.00
14+880.00		20.00	17+150.87	* -48.00	* 20.00
14+945.00	-58.00		17+199.30	* -45.00	* 20.00
14+945.00	-35.00		17+260.26	-45.00	* 21.00
14+975.54		14.00			

TS = 14+975.54
 SPIRAL DATA
 L = 45.00m
 R = 235.00m
 Theta = 05°29'09"

CURVE DATA
 Δ = 17°47'34"
 R = 235.00m
 L = 72.98m
 CD = 72.69m
 CB = S54°37'06"E

SPIRAL DATA
 L = 45.06m
 R = 235.00m
 Theta = 05°29'35"

SPIRAL DATA
 L = 60.04m
 R = 175.00m
 Theta = 09°49'43"

CURVE DATA
 Δ = 67°39'12"
 R = 175.00m
 L = 206.63m
 CD = 194.84m
 CB = S83°53'03"E

SPIRAL DATA
 L = 60.00m
 R = 175.00m
 Theta = 09°49'20"

REGISTERED
 PROFESSIONAL
 LAND SURVEYOR

Randy R. Scott
 OREGON
 JANUARY 15, 1987
 RANDY R. SCOTT
 2265

LICENSE EXPIRES 06/30/2004

DRAWN BY: R. SCOTT	DATE: 3/25/03
CHECKED BY: J. SCOTT	DRAWING NO.: 1
JOB NO.: 45	SHEET 6 OF 10

M.P. 12.47 - 12.81

CO. RD. # 1

12471281

FILED
 Date: 11/3/2003 By: JP
 This survey consists of:
 Map:
 Narrative:
 Corner Rpt:

DOUGLAS COUNTY
SURVEYOR

CANYONVILLE – TRAIL HIGHWAY
 RIGHT OF WAY MONUMENTATION SURVEY CONTINUED
 DOUGLAS COUNTY ROUTE NO. 1

LEGEND

- △ SET 5/8"x 30" REBAR/CAP AT DISTANCE AND LOCATION PER TABLE "A"
CAP STAMPED: DOUGLAS CO RD DPT, R-W
- SET 5/8"x 30" REFERENCE MON./CAP DUE TO OBSTRUCTION, ON LINE
AT DISTANCE AND LOCATION SHOWN ON THESE DRAWINGS
CAP STAMPED: DOUGLAS CO RD DPT, RP
- INDICATES APPROX. SECTION LINE LOCATION
- PT INDICATES POINT OF TANGENT
- PS INDICATES POINT OF SPIRAL
- PSC INDICATES POINT OF SPIRAL TO CURVE
- PCS INDICATES POINT OF CURVE TO SPIRAL
- CD INDICATES CHORD DISTANCE
- CB INDICATES CHORD BEARING

SPIRAL DATA
 L = 60.00m
 R = 175.00m
 Theta = 09°49'20"

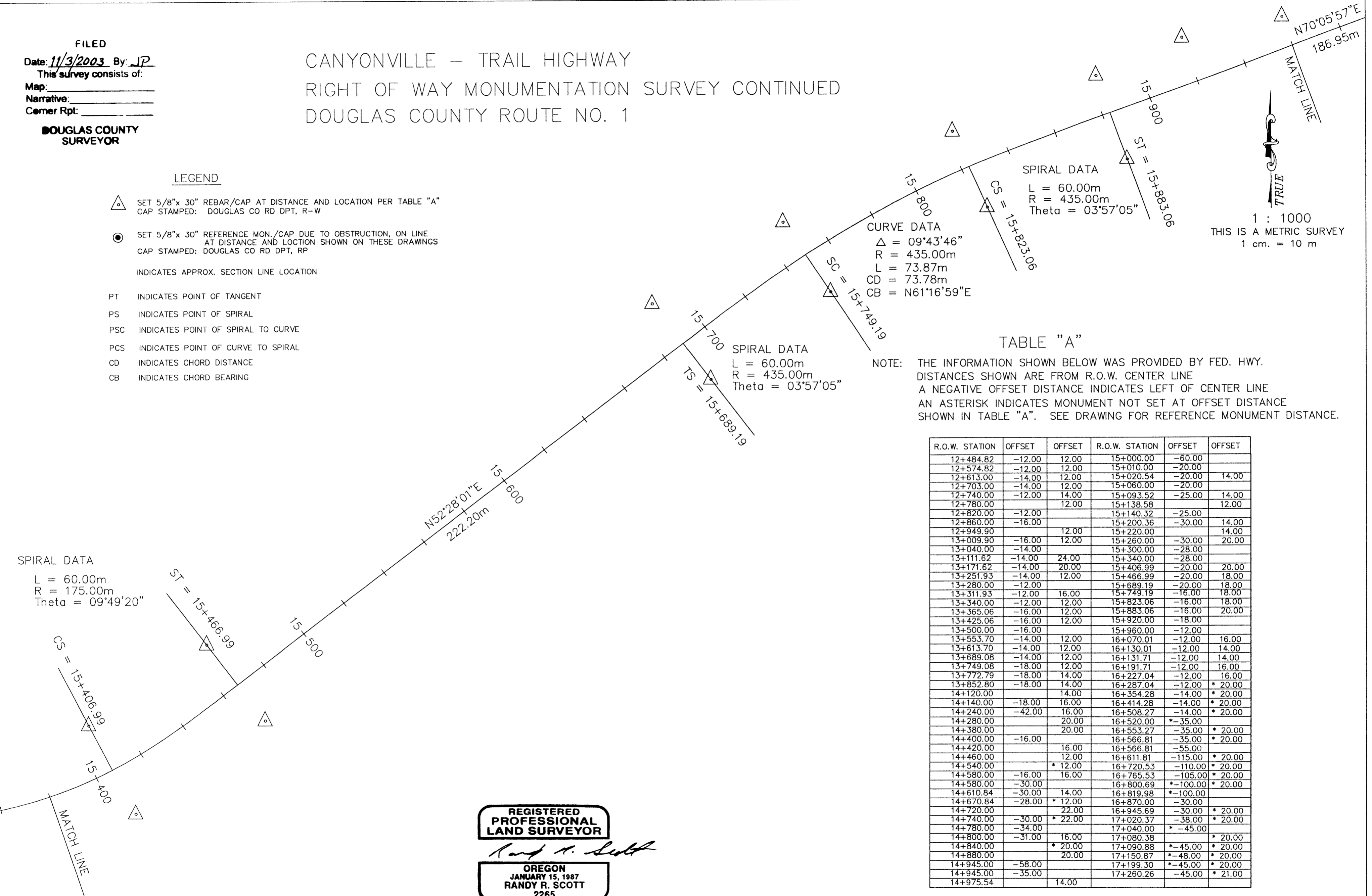


TABLE "A"

NOTE: THE INFORMATION SHOWN BELOW WAS PROVIDED BY FED. HWY. DISTANCES SHOWN ARE FROM R.O.W. CENTER LINE. A NEGATIVE OFFSET DISTANCE INDICATES LEFT OF CENTER LINE. AN ASTERISK INDICATES MONUMENT NOT SET AT OFFSET DISTANCE SHOWN IN TABLE "A". SEE DRAWING FOR REFERENCE MONUMENT DISTANCE.

R.O.W. STATION	OFFSET	OFFSET	R.O.W. STATION	OFFSET	OFFSET
12+484.82	-12.00	12.00	15+000.00	-60.00	
12+574.82	-12.00	12.00	15+010.00	-20.00	
12+613.00	-14.00	12.00	15+020.54	-20.00	14.00
12+703.00	-14.00	12.00	15+060.00	-20.00	
12+740.00	-12.00	14.00	15+093.52	-25.00	14.00
12+780.00		12.00	15+138.58		12.00
12+820.00	-12.00		15+140.32	-25.00	
12+860.00	-16.00		15+200.36	-30.00	14.00
12+949.90		12.00	15+220.00		14.00
13+009.90	-16.00	12.00	15+260.00	-30.00	
13+040.00	-14.00		15+300.00	-28.00	
13+111.62	-14.00	24.00	15+340.00	-28.00	
13+171.62	-14.00	20.00	15+406.99	-20.00	20.00
13+251.93	-14.00	12.00	15+466.99	-20.00	18.00
13+280.00	-12.00		15+689.19	-20.00	18.00
13+311.93	-12.00	16.00	15+749.19	-16.00	18.00
13+340.00	-12.00	12.00	15+823.06	-16.00	18.00
13+365.06	-16.00	12.00	15+883.06	-16.00	20.00
13+425.06	-16.00	12.00	15+920.00	-18.00	
13+500.00	-16.00		15+960.00	-12.00	
13+553.70	-14.00	12.00	16+070.01	-12.00	16.00
13+613.70	-14.00	12.00	16+130.01	-12.00	14.00
13+689.08	-14.00	12.00	16+131.71	-12.00	14.00
13+749.08	-18.00	12.00	16+191.71	-12.00	16.00
13+772.79	-18.00	14.00	16+227.04	-12.00	16.00
13+852.80	-18.00	14.00	16+287.04	-12.00	* 20.00
14+120.00		14.00	16+354.28	-14.00	* 20.00
14+140.00	-18.00	16.00	16+414.28	-14.00	* 20.00
14+240.00	-42.00	16.00	16+508.27	-14.00	* 20.00
14+280.00		20.00	16+520.00	* -35.00	
14+380.00		20.00	16+553.27	-35.00	* 20.00
14+400.00	-16.00		16+566.81	-35.00	* 20.00
14+420.00		16.00	16+566.81	-55.00	
14+460.00		12.00	16+611.81	-115.00	* 20.00
14+540.00		* 12.00	16+720.53	-110.00	* 20.00
14+580.00	-16.00	16.00	16+765.53	-105.00	* 20.00
14+580.00	-30.00		16+800.69	* -100.00	* 20.00
14+610.84	-30.00	14.00	16+819.98	* -100.00	
14+670.84	-28.00	* 12.00	16+870.00	-30.00	
14+720.00		* 22.00	16+945.69	-30.00	* 20.00
14+740.00	-30.00	* 22.00	17+020.37	-38.00	* 20.00
14+780.00	-34.00		17+040.00	* -45.00	
14+800.00	-31.00	16.00	17+080.38		* 20.00
14+840.00		* 20.00	17+090.88	* -45.00	* 20.00
14+880.00		20.00	17+150.87	* -48.00	* 20.00
14+945.00	-58.00		17+199.30	* -45.00	* 20.00
14+945.00	-35.00		17+260.26	-45.00	* 21.00
14+975.54		14.00			

REGISTERED PROFESSIONAL LAND SURVEYOR
Randy R. Scott
OREGON
 JANUARY 15, 1987
RANDY R. SCOTT
 2265

LICENSE EXPIRES 06/30/2004

DRAWN BY: R. SCOTT	DATE: 3/25/03
CHECKED BY: J. SCOTT	DRAWING NO.: 1
JOB NO.: 45	SHEET 7 OF 10

M.P. 12.81 - 13.16

CO. RD. # 1

12811316

TABLE "A"

NOTE: THE INFORMATION SHOWN BELOW WAS PROVIDED BY FED. HWY.
 DISTANCES SHOWN ARE FROM R.O.W. CENTER LINE
 A NEGATIVE OFFSET DISTANCE INDICATES LEFT OF CENTER LINE
 AN ASTERISK INDICATES MONUMENT NOT SET AT OFFSET DISTANCE
 SHOWN IN TABLE "A". SEE DRAWING FOR REFERENCE MONUMENT DISTANCE.

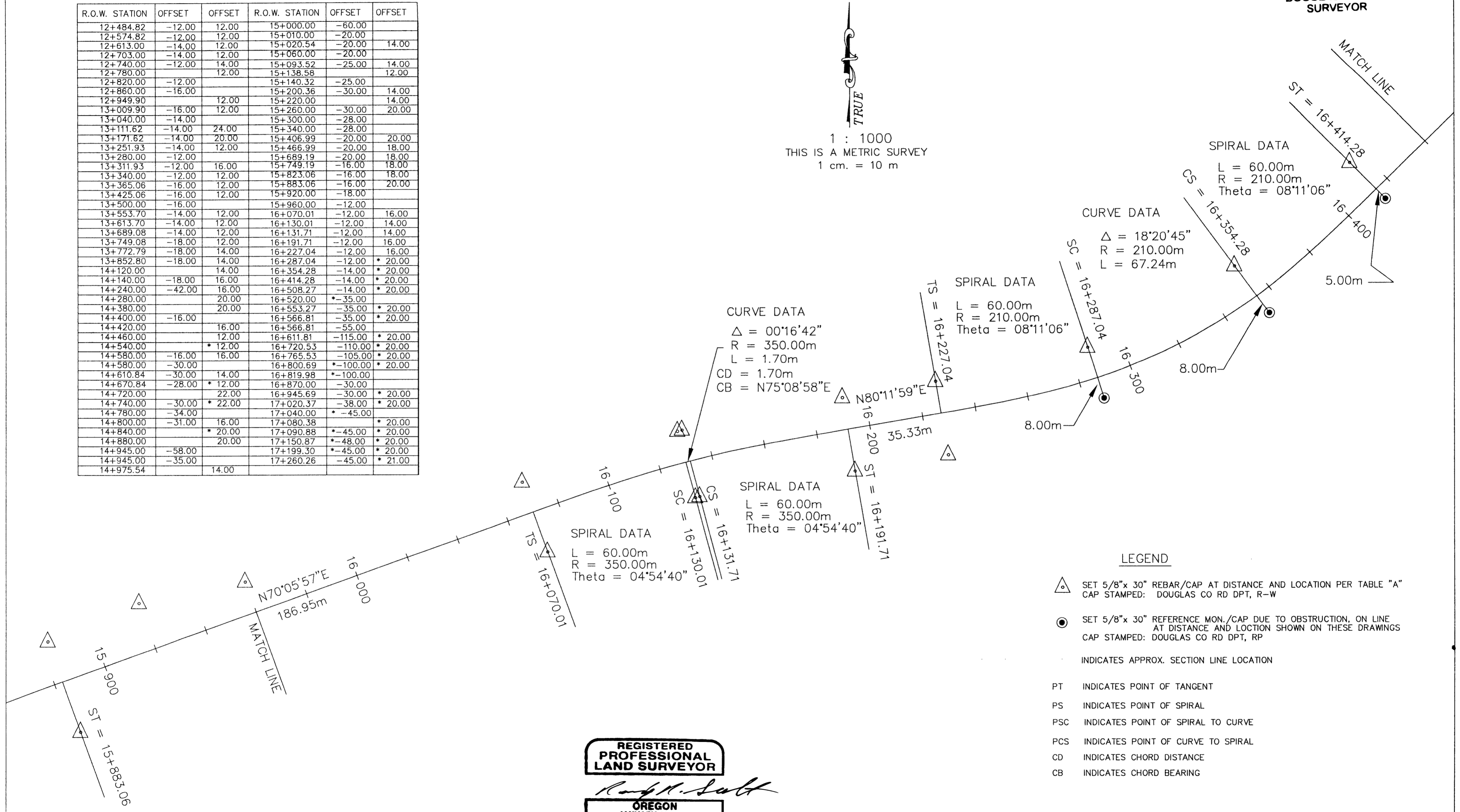
R.O.W. STATION	OFFSET	OFFSET	R.O.W. STATION	OFFSET	OFFSET
12+484.82	-12.00	12.00	15+000.00	-60.00	
12+574.82	-12.00	12.00	15+010.00	-20.00	
12+613.00	-14.00	12.00	15+020.54	-20.00	14.00
12+703.00	-14.00	12.00	15+060.00	-20.00	
12+740.00	-12.00	14.00	15+093.52	-25.00	14.00
12+780.00	-12.00	12.00	15+138.58	-25.00	12.00
12+820.00	-12.00		15+140.32	-25.00	
12+860.00	-16.00		15+200.36	-30.00	14.00
12+949.90		12.00	15+220.00	-30.00	14.00
13+009.90	-16.00	12.00	15+260.00	-30.00	20.00
13+040.00	-14.00		15+300.00	-28.00	
13+111.62	-14.00	24.00	15+340.00	-28.00	
13+171.62	-14.00	20.00	15+406.99	-20.00	20.00
13+251.93	-14.00	12.00	15+466.99	-20.00	18.00
13+280.00	-12.00		15+689.19	-20.00	18.00
13+311.93	-12.00	16.00	15+749.19	-16.00	18.00
13+340.00	-12.00	12.00	15+823.06	-16.00	18.00
13+365.06	-16.00	12.00	15+883.06	-16.00	20.00
13+425.06	-16.00	12.00	15+920.00	-18.00	
13+500.00	-16.00		15+960.00	-12.00	
13+553.70	-14.00	12.00	16+070.01	-12.00	16.00
13+613.70	-14.00	12.00	16+130.01	-12.00	14.00
13+689.08	-14.00	12.00	16+131.71	-12.00	14.00
13+749.08	-18.00	12.00	16+191.71	-12.00	16.00
13+772.79	-18.00	14.00	16+227.04	-12.00	16.00
13+852.80	-18.00	14.00	16+287.04	-12.00	* 20.00
14+120.00		14.00	16+354.28	-14.00	* 20.00
14+140.00	-18.00	16.00	16+414.28	-14.00	* 20.00
14+240.00	-42.00	16.00	16+508.27	-14.00	* 20.00
14+280.00		20.00	16+520.00	* -35.00	
14+380.00		20.00	16+553.27	-35.00	* 20.00
14+400.00	-16.00		16+566.81	-35.00	* 20.00
14+420.00		16.00	16+566.81	-55.00	
14+460.00		12.00	16+611.81	-115.00	* 20.00
14+540.00	* 12.00		16+720.53	-110.00	* 20.00
14+580.00	-16.00	16.00	16+765.53	-105.00	* 20.00
14+580.00	-30.00		16+800.69	* -100.00	* 20.00
14+610.84	-30.00	14.00	16+819.98	* -100.00	
14+670.84	-28.00	* 12.00	16+870.00	-30.00	
14+720.00		22.00	16+945.69	-30.00	* 20.00
14+740.00	-30.00	* 22.00	17+020.37	-38.00	* 20.00
14+780.00	-34.00		17+040.00	* -45.00	
14+800.00	-31.00	16.00	17+080.38		* 20.00
14+840.00	* 20.00		17+090.88	* -45.00	* 20.00
14+880.00		20.00	17+150.87	* -48.00	* 20.00
14+945.00	-58.00		17+199.30	* -45.00	* 20.00
14+945.00	-35.00		17+260.26	-45.00	* 21.00
14+975.54		14.00			

CANYONVILLE - TRAIL HIGHWAY
 RIGHT OF WAY MONUMENTATION SURVEY CONTINUED
 DOUGLAS COUNTY ROUTE NO. 1

FILED
 Date: 11/3/2003 By: JP
 This survey consists of:
 Map:
 Narrative:
 Corner Rpt:

DOUGLAS COUNTY
 SURVEYOR

1 : 1000
 THIS IS A METRIC SURVEY
 1 cm. = 10 m



REGISTERED
 PROFESSIONAL
 LAND SURVEYOR
Randy R. Scott
 OREGON
 JANUARY 15, 1987
 RANDY R. SCOTT
 2265

LICENSE EXPIRES 06/30/2004

- LEGEND
- SET 5/8"x 30" REBAR/CAP AT DISTANCE AND LOCATION PER TABLE "A"
CAP STAMPED: DOUGLAS CO RD DPT, R-W
 - SET 5/8"x 30" REFERENCE MON./CAP DUE TO OBSTRUCTION, ON LINE
AT DISTANCE AND LOCATION SHOWN ON THESE DRAWINGS
CAP STAMPED: DOUGLAS CO RD DPT, RP
 - INDICATES APPROX. SECTION LINE LOCATION
 - PT INDICATES POINT OF TANGENT
 - PS INDICATES POINT OF SPIRAL
 - PSC INDICATES POINT OF SPIRAL TO CURVE
 - PCS INDICATES POINT OF CURVE TO SPIRAL
 - CD INDICATES CHORD DISTANCE
 - CB INDICATES CHORD BEARING

DRAWN BY: R. SCOTT	DATE: 3/25/03
CHECKED BY: J. SCOTT	DRAWING NO.: 1
JOB NO.: 45	SHEET 8 OF 10

M.P. 13.16 - 13.45

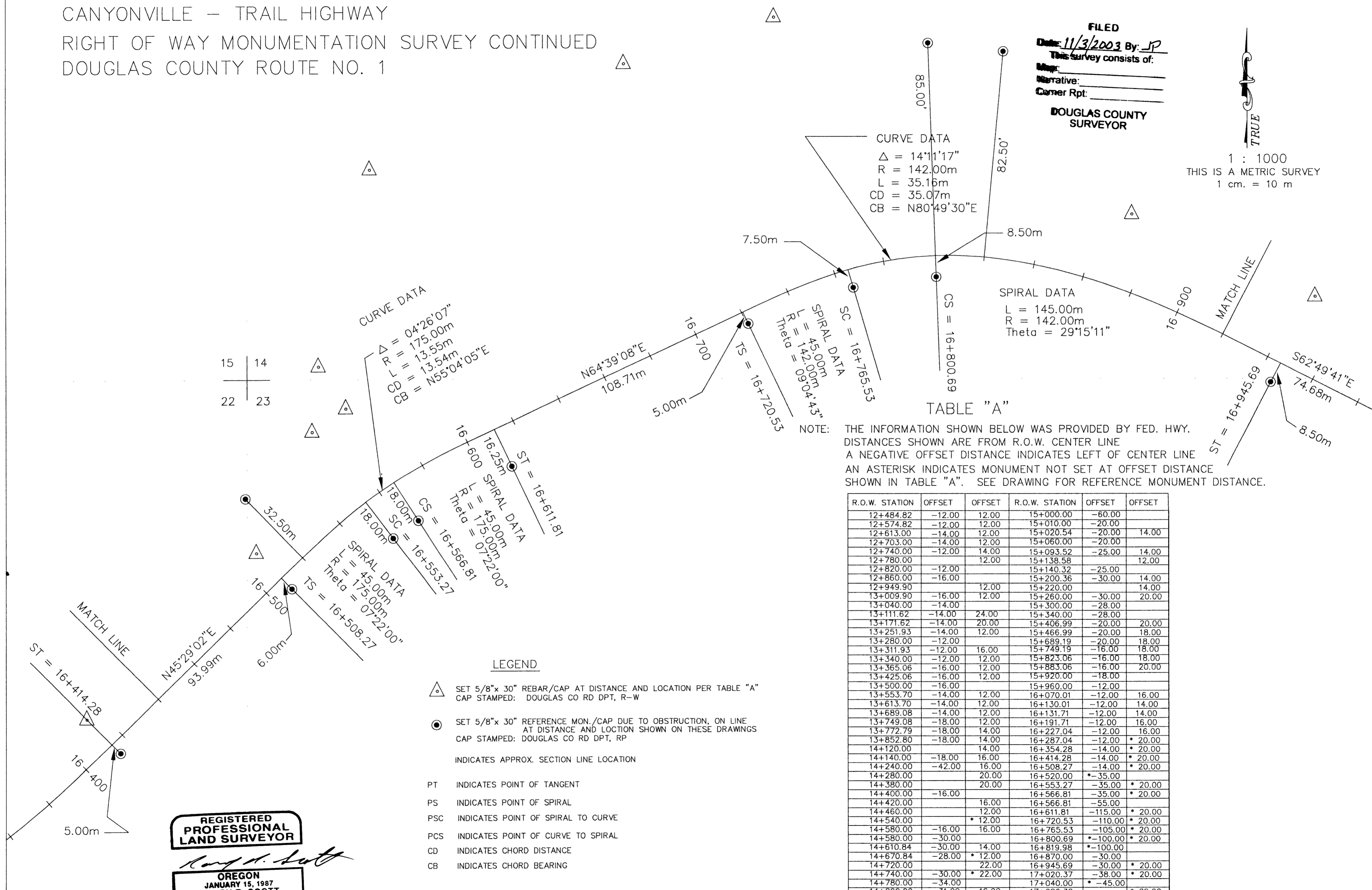
CO. RD. # 1

13161345

CANYONVILLE - TRAIL HIGHWAY
 RIGHT OF WAY MONUMENTATION SURVEY CONTINUED
 DOUGLAS COUNTY ROUTE NO. 1

FILED
 Date: 11/3/2003 By: JP
 This survey consists of:
 Narrative:
 Corner Rpt:
 DOUGLAS COUNTY
 SURVEYOR

1 : 1000
 THIS IS A METRIC SURVEY
 1 cm. = 10 m



NOTE: THE INFORMATION SHOWN BELOW WAS PROVIDED BY FED. HWY. DISTANCES SHOWN ARE FROM R.O.W. CENTER LINE. A NEGATIVE OFFSET DISTANCE INDICATES LEFT OF CENTER LINE. AN ASTERISK INDICATES MONUMENT NOT SET AT OFFSET DISTANCE SHOWN IN TABLE "A". SEE DRAWING FOR REFERENCE MONUMENT DISTANCE.

R.O.W. STATION	OFFSET	OFFSET	R.O.W. STATION	OFFSET	OFFSET
12+484.82	-12.00	12.00	15+000.00	-60.00	
12+574.82	-12.00	12.00	15+010.00	-20.00	
12+613.00	-14.00	12.00	15+020.54	-20.00	14.00
12+703.00	-14.00	12.00	15+060.00	-20.00	
12+740.00	-12.00	14.00	15+093.52	-25.00	14.00
12+780.00		12.00	15+138.58		12.00
12+820.00	-12.00		15+140.32	-25.00	
12+860.00	-16.00		15+200.36	-30.00	14.00
12+949.90		12.00	15+220.00		14.00
13+009.90	-16.00	12.00	15+260.00	-30.00	20.00
13+040.00	-14.00		15+300.00	-28.00	
13+111.62	-14.00	24.00	15+340.00	-28.00	
13+171.62	-14.00	20.00	15+406.99	-20.00	20.00
13+251.93	-14.00	12.00	15+466.99	-20.00	18.00
13+280.00	-12.00		15+689.19	-20.00	18.00
13+311.93	-12.00	16.00	15+749.19	-16.00	18.00
13+340.00	-12.00	12.00	15+823.06	-16.00	18.00
13+365.06	-16.00	12.00	15+883.06	-16.00	20.00
13+425.06	-16.00	12.00	15+920.00	-18.00	
13+500.00	-16.00		15+960.00	-12.00	
13+553.70	-14.00	12.00	16+070.01	-12.00	16.00
13+613.70	-14.00	12.00	16+130.01	-12.00	14.00
13+689.08	-14.00	12.00	16+131.71	-12.00	14.00
13+749.08	-18.00	12.00	16+191.71	-12.00	16.00
13+772.79	-18.00	14.00	16+227.04	-12.00	16.00
13+852.80	-18.00	14.00	16+287.04	-12.00	* 20.00
14+120.00		14.00	16+354.28	-14.00	* 20.00
14+140.00	-18.00	16.00	16+414.28	-14.00	* 20.00
14+240.00	-42.00	16.00	16+508.27	-14.00	* 20.00
14+280.00		20.00	16+520.00	* -35.00	
14+380.00		20.00	16+553.27	-35.00	* 20.00
14+400.00	-16.00		16+566.81	-35.00	* 20.00
14+420.00		16.00	16+566.81	-55.00	
14+460.00		12.00	16+611.81	-115.00	* 20.00
14+540.00		* 12.00	16+720.53	-110.00	* 20.00
14+580.00	-16.00	16.00	16+765.53	-105.00	* 20.00
14+580.00	-30.00		16+800.69	* -100.00	* 20.00
14+610.84	-30.00	14.00	16+819.98	* -100.00	
14+670.84	-28.00	* 12.00	16+870.00	-30.00	
14+720.00		22.00	16+945.69	-30.00	* 20.00
14+740.00	-30.00	* 22.00	17+020.37	-38.00	* 20.00
14+780.00	-34.00		17+040.00	* -45.00	
14+800.00	-31.00	16.00	17+080.38		* 20.00
14+840.00		* 20.00	17+090.88	* -45.00	* 20.00
14+880.00		20.00	17+150.87	* -48.00	* 20.00
14+945.00	-58.00		17+199.30	* -45.00	* 20.00
14+945.00	-35.00		17+260.26	-45.00	* 21.00
14+975.54		14.00			

- LEGEND**
- △ SET 5/8" x 30" REBAR/CAP AT DISTANCE AND LOCATION PER TABLE "A" CAP STAMPED: DOUGLAS CO RD DPT, R-W
 - SET 5/8" x 30" REFERENCE MON./CAP DUE TO OBSTRUCTION, ON LINE AT DISTANCE AND LOCATION SHOWN ON THESE DRAWINGS CAP STAMPED: DOUGLAS CO RD DPT, RP
 - INDICATES APPROX. SECTION LINE LOCATION
 - PT INDICATES POINT OF TANGENT
 - PS INDICATES POINT OF SPIRAL
 - PSC INDICATES POINT OF SPIRAL TO CURVE
 - PCS INDICATES POINT OF CURVE TO SPIRAL
 - CD INDICATES CHORD DISTANCE
 - CB INDICATES CHORD BEARING

REGISTERED PROFESSIONAL LAND SURVEYOR
Randy R. Scott
 OREGON
 JANUARY 15, 1987
 RANDY R. SCOTT
 2265

LICENSE EXPIRES 06/30/2004

DRAWN BY: R. SCOTT DATE: 3/25/03
 CHECKED BY: J. SCOTT DRAWING NO.: 1
 JOB NO.: 45 SHEET 9 OF 10

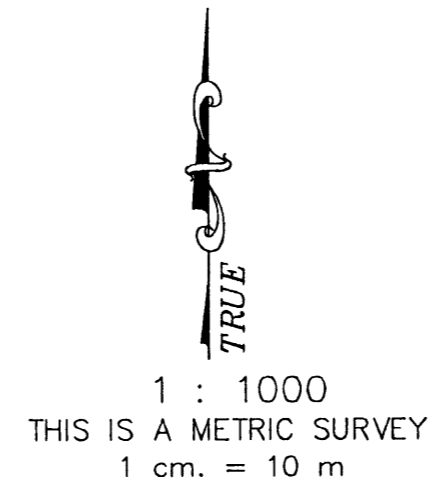
M.P. 13.45 - 13.76
CO. RD. # 1

13451376

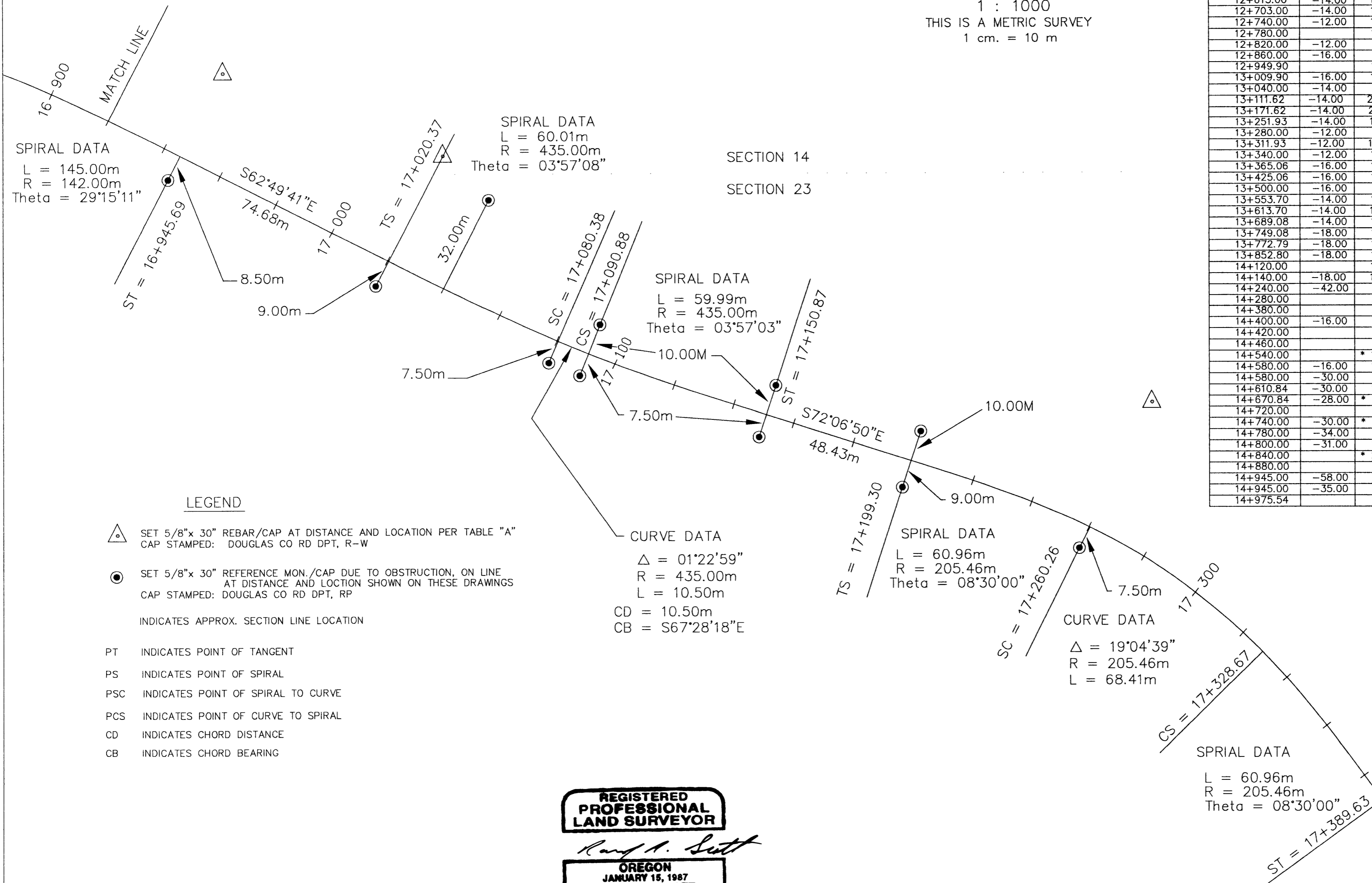
CANYONVILLE - TRAIL HIGHWAY
 RIGHT OF WAY MONUMENTATION SURVEY CONTINUED
 DOUGLAS COUNTY ROUTE NO. 1

TABLE "A"

NOTE: THE INFORMATION SHOWN BELOW WAS PROVIDED BY FED. HWY.
 DISTANCES SHOWN ARE FROM R.O.W. CENTER LINE
 A NEGATIVE OFFSET DISTANCE INDICATES LEFT OF CENTER LINE
 AN ASTERISK INDICATES MONUMENT NOT SET AT OFFSET DISTANCE
 SHOWN IN TABLE "A". SEE DRAWING FOR REFERENCE MONUMENT DISTANCE.



R.O.W. STATION	OFFSET	OFFSET	R.O.W. STATION	OFFSET	OFFSET
12+484.82	-12.00	12.00	15+000.00	-60.00	
12+574.82	-12.00	12.00	15+010.00	-20.00	
12+613.00	-14.00	12.00	15+020.54	-20.00	14.00
12+703.00	-14.00	12.00	15+060.00	-20.00	
12+740.00	-12.00	14.00	15+093.52	-25.00	14.00
12+780.00	-12.00	12.00	15+138.58	-20.00	12.00
12+820.00	-12.00		15+140.32	-25.00	
12+860.00	-16.00		15+200.36	-30.00	14.00
12+949.90	-16.00	12.00	15+220.00		14.00
13+009.90	-16.00	12.00	15+260.00	-30.00	20.00
13+040.00	-14.00		15+300.00	-28.00	
13+111.62	-14.00	24.00	15+340.00	-28.00	
13+171.62	-14.00	20.00	15+406.99	-20.00	20.00
13+251.93	-14.00	12.00	15+466.99	-20.00	18.00
13+280.00	-12.00		15+689.19	-20.00	18.00
13+311.93	-12.00	16.00	15+749.19	-16.00	18.00
13+340.00	-12.00	12.00	15+823.06	-16.00	18.00
13+365.06	-16.00	12.00	15+883.06	-16.00	20.00
13+425.06	-16.00	12.00	15+920.00	-18.00	
13+500.00	-16.00		15+960.00	-12.00	
13+553.70	-14.00	12.00	16+070.01	-12.00	16.00
13+613.70	-14.00	12.00	16+130.01	-12.00	14.00
13+689.08	-14.00	12.00	16+131.71	-12.00	14.00
13+749.08	-18.00	12.00	16+191.71	-12.00	16.00
13+772.79	-18.00	14.00	16+227.04	-12.00	16.00
13+852.80	-18.00	14.00	16+287.04	-12.00	* 20.00
14+120.00	-18.00	14.00	16+354.28	-14.00	* 20.00
14+140.00	-18.00	16.00	16+414.28	-14.00	* 20.00
14+240.00	-42.00	16.00	16+508.27	-14.00	* 20.00
14+280.00		20.00	16+520.00	* -35.00	
14+380.00		20.00	16+553.27	-35.00	* 20.00
14+400.00	-16.00		16+566.81	-35.00	* 20.00
14+420.00		16.00	16+566.81	-55.00	
14+460.00		12.00	16+611.81	-115.00	* 20.00
14+540.00		* 12.00	16+720.53	-110.00	* 20.00
14+580.00	-16.00	16.00	16+765.53	-105.00	* 20.00
14+610.84	-30.00	14.00	16+800.69	* -100.00	
14+670.84	-28.00	* 12.00	16+819.98	* -100.00	
14+720.00		22.00	16+870.00	-30.00	
14+740.00	-30.00	* 22.00	16+945.69	-30.00	* 20.00
14+780.00	-34.00		17+020.37	-38.00	* 20.00
14+800.00	-31.00	16.00	17+040.00	* -45.00	
14+840.00		* 20.00	17+080.38		* 20.00
14+880.00		20.00	17+090.88	* -45.00	* 20.00
14+945.00	-58.00		17+150.87	* -48.00	* 20.00
14+945.00	-35.00		17+199.30	* -45.00	* 20.00
14+975.54		14.00	17+260.26	-45.00	* 21.00



LEGEND

- △ SET 5/8"x 30" REBAR/CAP AT DISTANCE AND LOCATION PER TABLE "A"
CAP STAMPED: DOUGLAS CO RD DPT, R-W
- SET 5/8"x 30" REFERENCE MON./CAP DUE TO OBSTRUCTION, ON LINE
AT DISTANCE AND LOCATION SHOWN ON THESE DRAWINGS
CAP STAMPED: DOUGLAS CO RD DPT, RP
- INDICATES APPROX. SECTION LINE LOCATION
- PT INDICATES POINT OF TANGENT
- PS INDICATES POINT OF SPIRAL
- PSC INDICATES POINT OF SPIRAL TO CURVE
- PCS INDICATES POINT OF CURVE TO SPIRAL
- CD INDICATES CHORD DISTANCE
- CB INDICATES CHORD BEARING

CURVE DATA
 $\Delta = 01^{\circ}22'59''$
 $R = 435.00m$
 $L = 10.50m$
 $CD = 10.50m$
 $CB = S67^{\circ}28'18''E$

REGISTERED
 PROFESSIONAL
 LAND SURVEYOR

Randy R. Scott
 OREGON
 JANUARY 15, 1987
 RANDY R. SCOTT
 2265

LICENSE EXPIRES 06/30/2004

FILED
 Date: 11/3/2003 By: JP
 This survey consists of:
 Map: _____
 Narrative: _____
 Corner Rpt: _____
 DOUGLAS COUNTY
 SURVEYOR

DRAWN BY: R. SCOTT	DATE: 3/25/03
CHECKED BY: J. SCOTT	DRAWING NO.: 1
JOB NO.: 45	SHEET 10 OF 10

M.P. 13.76 - 14.04
CO. RD. # 1

13761404